



TRUCK CAMPERS

Excellence You Deserve!

Corsair 2007

excella



North America's Best **POLAR-PAK** 
THE SUB-ZERO SOLUTION



New for 2007 - The very spacious 100" wide body Model 780 Extreme shown above in the standard Medley Interior. The Dinette boasts a large dinette that converts into a 92" bed with an optional fold down bunk above. This compact, light weight camper is built for all season, off road use.

Excella Livability

Experience the comfort and livability only Corsair offers. Large, solar reflective, double glazed thermopane windows provide cozy comfort in extreme cold or hot weather conditions. Dual pane, residential skylights with a lifetime warranty brighten the interior. Spacious countertops, large sinks with a residential "Taymor" faucet, numerous drawers and abundant cupboards provide superb storage. 60"x80" residential pillowtop mattresses allow extra sleeping comfort. "Whisper King" water pumps lessen noise and vibration in water lines.

The extras you can't see are what set Corsair apart from the competition. These and the exclusive *Polar Pak features are the best in the industry by far!

“Overall, we are very satisfied with the camper especially the winterization. We slept in it in Prince George, BC this winter with a wind chill factor of -22 degrees and were very warm and comfortable.”

Mr. & Mrs. R.W. - Campbell River, British Columbia



Model 860 Slide-Out shown above in the durable Calypso interior. An optional mirrored wardrobe in the bedroom provides superior closet space. A reversible Fantastic Fan constantly changes the air throughout the camper.



We are **General Coach**, a division of Thor Industries Inc., a western Canadian company that manufactures the well known Corsair brand of quality recreational vehicles. For over 55 years we have been consumer established as builders of high value, superior quality RV's with proven high resale value.

Because we are a limited capacity production company we do not mass produce our products allowing us to ensure strict quality control standards which, in turn, ensures your comfort and satisfaction. Residential quality components and residential style construction techniques are utilized by skilled, conscientious, long term employees dedicated to quality workmanship.

Corsair by General Coach is designed for recreational use in western Canadian climate and conditions with standard features second to none. Your peace of mind with your purchase decision is reinforced by Corsair's **Six Year Limited Structural Integrity Warranty**.

Why a Thor Product Is Your Best RV Value.

Thor Industries, Inc., proudly traces its history back nearly seventy years to the pioneering days of the RV industry with the founding of Airstream, the industry's oldest and most renowned brand. Our total commitment to quality and our philosophy of putting our customers first has led to our continuous growth; today Thor is the largest manufacturer of travel trailers and fifth wheels, a major manufacturer of motorhomes and the largest builder of small and midsize buses in North America. Thor's strong financial condition and years of solid growth are your assurance that we will be here to serve you for years to come. We think this extra peace of mind is important when you are making a significant investment. **Our customers are always #1 with us.**

Excella Satisfaction



The popular 10'8" Model shown above in the modern Cha Cha Interior provides all the amenities of home in a non-slide model. All models excluding the 9'2" are 8'4" in width which provides spacious livability not found in other campers. You'll marvel at the storage space in this model including superior wardrobes and large pull-out drawers on steel guides. The kitchen is highlighted by a long kitchen counter, large cupboard doors with open storage, a double pull-out can storage rack and modern looking name brand appliances. The bathroom has a separate full height shower enclosure with an optional residential skylight.

Don't take our word for it though! Read our customer testimonial page and discover how our customers enjoy the unique features found only in our campers and how the construction techniques hold up to the rigors of road and climate conditions throughout North America.

A buying decision you'll never regret!

2007 STANDARD FEATURES AND OPTIONS

EXTERIOR

- Welded aluminum framed walls w/thermal barrier
- Vacuum laminated **Medallion Filon Fiberglass** wall construction
- High density block Styrofoam insulation R8 throughout
- Aerodynamic molded fiberglass front cap
- Quality 3M graphics
- Cab window
- Walk-on 2" vacuum laminated welded aluminum framed roof
- Dicor Vinyl roofing material
- Large J rail rain gutters
- Vacuum laminated insulated floor and subfloor
- Heated basement storage
- Radius insulated compartment doors
- Automotive quality clearance & tail lights
- Pre-wire for roof A/C, TV antenna and cable TV hook-up
- Solar panel pre-wire
- Exterior shower
- BBQ Quick Connect
- GFI circuit protection — GFI patio receptacle
- Heavy duty camper tie downs
- Enclosed, molded battery compartment
- Radiused entrance door with Saf-T-View rear window and retainer arm
- Reinforced screen door w/kick panel
- Flush mount lock with deadbolt
- Fold-away assist rail
- Exterior entrance safety light
- Exterior lights on both sides
- Basement Storage Light
- Wide body 100" (n/a 9'2")
- **"Happi Jac" electric jacks** (opt. 780, 9'2")



- Mechanical jacks (opt. 780)
- Front safety bumpers
- Basement Storage Tray (opt. 780)
- Roof rack and ladder (opt. 780)
- Decorative white metal undersides

INTERIOR

- All plywood construction — no particle board
- Rugged "Diamond" floor linoleum
- Birch drawers with metal guides
- Solid beech cabinet doors mortise and tenon construction
- Beech-edged countertops and tables
- Stainless steel kitchen sink
- "Taymor" Residential faucet, lifetime warranty
- Cutting board/sink cover
- Pull-out can rack — most models
- Upholstered window valances
- Fabric night shades
- Stereo CD Player with 2 speakers (opt. 780)
- Microwave pre-wire
- Deluxe Atwood Stainless Steel Range
- Norcold 6 cu.ft. frig (9'2"- 5 cu.ft., 780 - 3 cu.ft.) w/brushed aluminum door panels
- Deluxe Systems Monitor panel
- Fluorescent lights in kitchen and L.R.
- Escape window in bedroom
- Fantastic Fan — bedroom (opt. 780, 9'2")
- Innerspring pillowtop mattress — queen
- Quality bedspread with pillow shams
- Side bedroom storage hutches
- Front bedroom storage cabinets
- Seamless fiberglass shower enclosure
- TV shelf swing-away (Std. 10'8")
- 32 amp power converter
- Propane leak detector
- Whisper King water pump

- Antifreeze pick-up system
- Carbon Monoxide detector
- D.S.I. water heater 23L/6 Gal.
- Freeze resistant 1/2" waterlines
- 25,000 BTU furnace - DSI -Ducted
- 18,000 BTU furnace (780, 9'2") - DSI -Ducted

POPULAR OPTIONS

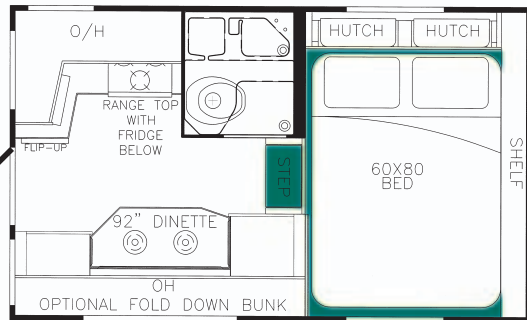
- ❖ Air conditioner w/heat strip, 11,000 BTU
- ❖ Aluminum bumper with triple step
- ❖ Aluminum lift base for super duty truck
- ❖ Awning at entrance door
- ❖ Awning over slide
- ❖ Awning side box 9'
- ❖ Battery tray (N/A 9'2")
- ❖ Beds — twin
- ❖ Camper step
- ❖ Carpet floor - loose
- ❖ Clock
- ❖ Electric Jacks - 780 9'2"
- ❖ Generator pre-wire & pre-plumb (n/a 780, 9'2", 9'6")
- ❖ LCD TV 19" w/swivel arm
- ❖ Swivel arm only for LCD TV
- ❖ Microwave oven
- ❖ Beech fridge panels
- ❖ Residential skylight with blind in kitchen
- ❖ Residential skylite in bath (n/a 9'2", 990)
- ❖ Short Box Saddle bags (860, 9'2")
- ❖ Satellite Pre-wire
- ❖ Solar panel 80W
- ❖ Stereo with DVD player
- ❖ Double glazed thermopane windows
- ❖ TV antenna with power boost
- ❖ TV shelf — swing away (9'2")
- ❖ TV shelf - swivel (780, 860, 1050)
- ❖ Water filter
- ❖ Wardrobe (mirrored) I.L.O. hutches (Model 860, 1050)

2007 FEATURES AND SPECIFICATIONS

Model	780	9'2"	9'6"	10'8"	Slide-Out Models			
					860	990	1050	1060
Floor Length (M./Ft.)	2.3/7'8"	2.7/9'0"	2.8/9'3"	3.2/10'5"	2.6/8'6"	3.0/9'9"	3.2/10'5"	3.2/10'6"
Overall Length (M./Ft.)	4.4/14'5"	5.1/16'9"	5.4/17'7"	5.8/18'9"	5.1/16'10"	5.5/18'2"	5.7/18'9"	5.8/18'10"
Exterior Width (M./Ft.)	2.5/8'4"	2.4/8'0"	2.5/8'4"	2.5/8'4"	2.5/8'4"	2.5/8'4"	2.5/8'4"	2.5/8'4"
Exterior Height (M./Ft.) <small>(To top of ladder, opt. roof A/C = add 7")</small>	2.7/8'8"	2.6/8'5"	2.6/8'6"	2.6/8'6"	2.6/8'6"	2.6/8'6"	2.6/8'7"	2.7/8'8"
Interior Height (M./Ft.)	2.0/6'6"	1.9/6'4"	2.0/6'6"	2.0/6'6"	2.0/6'6"	2.0/6'6"	2.0/6'6"	2.0/6'6"
Bedroom Height (M./Ft.)	1.2/3'10"	1.1/3'8"	1.2/3'10"	1.2/3'10"	1.2/3'10"	1.2/3'10"	1.2/3'10"	1.2/3'10"
Dry Weight (Kg.)	984 kg	1169 kg	1276 kg	1361 kg	1357 kg	1396 kg	1513 kg	1524 kg
Dry Weight (Lbs.)	2164 lbs.	2577 lbs.	2813 lbs.	3000 lbs.	2990 lbs.	3076 lbs.	3334 lbs.	3359 lbs.
Fresh Water (L./Gal.)	180/48	103/27	103/27	180/48	180/48	180/48	180/48	180/48
Grey Tank (L./Gal.)	95/25	68/18	68/18	68/18	95/25	145/38	145/38	145/38
Black Tank (L./Gal.)	95/25	74/19	84/22	84/22	95/25	123/32	123/32	123/32
LPG Capacity (Lbs./Gal.)	60/17.1 (OPTION)	40/11.5	40/11.5	40/11.5	60/17.1 (OPTION)	60/17.1 (OPTION)	60/17.1 (STD)	60/17.1 (OPTION)

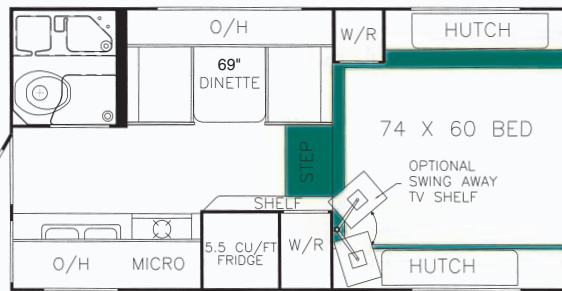
Suitable for Heavy-Duty Short Box Trucks
100" Wide Body

Model 780



Model 9'2"

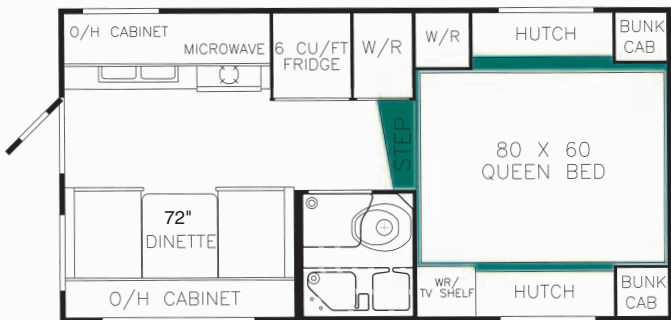
96" Wide Body



Suitable for Heavy-Duty Short Box Trucks.
*See dealer for Polar Pak features.

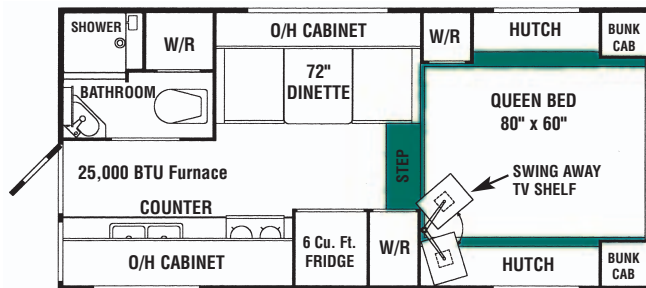
Model 9'6"

100" Wide Body

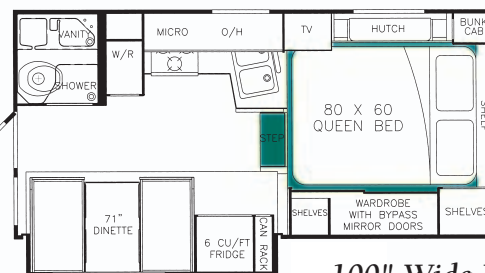


Model 10'8"

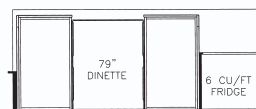
100" Wide Body



Model 990 Slide Out



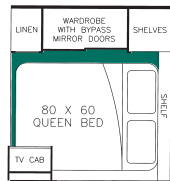
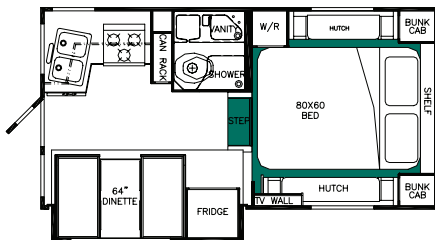
100" Wide Body



Optional 79" Long Dinette available on 990

Model 860 Slide Out

100" Wide Body



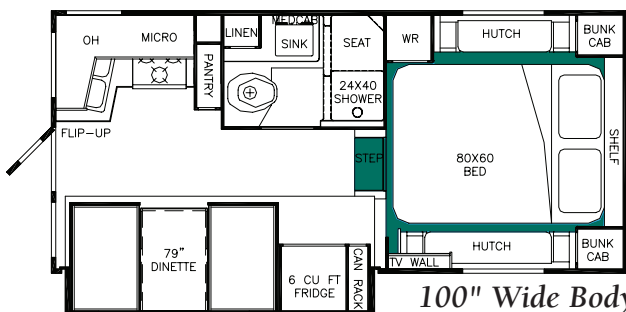
OPTIONAL BEDROOM AVAILABLE ON 860

Optional Bedroom available on 860 and 1050

Suitable for Heavy-Duty Short Box Trucks

Model 1050 Slide Out

100" Wide Body



Model 1060 Slide Out

100" Wide Body



The manufacturer reserves the right to improve or modify the product which may change specifications, designs or prices. Information contained herein is from data available at time of printing. All products meet or exceed CSA or RVIA standards.

Production information, specifications, photography in this brochure were as accurate as possible at time of printing. Photographs may contain some features that are optional on your vehicle. Since we continually strive to improve our products, actual products may differ. Prices and specifications are subject to change without notice. All capacities are approximate and dimensions are nominal. All products meet or exceed CSA or RVIA standards. Check with your local dealer for a complete list of options and features on the model you are considering.

VEHICLE LOADING: Every effort has been made to provide the greatest number of options for the recreation vehicle owner. Along with these choices comes the responsibility to manage the loads that are imposed by the choices so that they remain within the truck manufacturer's specified chassis weight limits. Do not overload.

DRY WEIGHTS based on standard features; optional equipment not included.

WARNING: This information is intended as a guide only. Weights of individual vehicles may vary. Consult your owner's manual for complete loading instructions.

CUSTOMER TESTIMONIALS

“ I work for the dealership I bought the camper from. This was one of the first campers I saw come through the shop that I was very impressed with. The workmanship is great and better than most of the other campers that we see and work on. We liked the camper so much we talked my Dad into buying the same camper and he likes his as well.

Ben W. - Meridean, Idaho ”

“ Find it warmer than our Lance - Maybe that's the Canadian built part. Excellent storage areas.

S.N. Ltd. - Whitehorse, Yukon ”

“ We really appreciate the high quality of materials, assembly and the extremely thoughtful design of the camper. The interior has a residential-like ambience, very wide and airy, thanks to the oversized skylights. I feel that it would be rather difficult to improve on the this very well designed and built product. We are so happy we found out about General Coach.

Phil P. - Vacaville, California ”

“ Style, design, colors, price, quality. Love it!!

Cindy & Fred H. - Prince George, British Columbia ”

“ We are very pleased with your product! We did our homework when it came to purchasing a new camper. It was between you and Arctic Fox. Your camper had the extra options (larger dinette/bed) and larger holding tanks that sold us on your product

Jerry & Nellie J. - Bellingham, Washington ”

“ This camper has been very good the first year we owned it. Owned several types and brands mostly Canadian made.

Wayne M. - Whitecourt, Alberta ”

“ I love the insulation everywhere. We love the skylight and the height of the cab above the bed. No claustrophobia at all.

Ken & Denise M. - Spokane Valley, Washington ”

“ We love our new camper. Our first trip was a two week road trip that went without a hitch. Love the skylight.

Marnel G. - Olympia, Washington ”

“ We have been pleased with our camper and the service provided.

Terry B. - Oliver, British Columbia ”

“ We looked a long time, visited many dealers around Puget Sound area, checked websites and magazines – The combination of quality, features, price and a pleasant salesperson made us choose this product.

Loren T. - Port Orchard, Washington ”

“ About 10 years ago a most exciting trip brought us to your town after learning General Coach RV's were built in Oliver. A factory tour lead us, in the spring of 1997, to purchase the fourth truck camper manufactured by General Coach from a dealer in the area. We recently put on our 610th night in our 9'6" camper and added to the 150,000 kms it has travelled. After this much use, it looks and serves as perfectly as when first purchased. To any of the staff at General Coach, may we say your product has far exceeded all expectations.

Don K. - Roberts Creek, British Columbia ”

“ Better design, more light inside due to skylights. Step up to the bed is not as high as old camper. Slide-out adds a lot more room.

Kathryn & Ron M. - Thornhill, British Columbia ”

“ The floor plan was as nice a plan as we saw while looking for a unit. Lots of convenient storage and well thought out options. Great price, many thousand less than other units on the market. Exceptional quality in workmanship, as a furniture builder I'm impressed. I know in business a lot of RV makers come and go like water in a sink which tells me why you've been in business so long. Your people must have pride and dedication in their work to have been building and improving units for so many years.

Joe M. - Bainbridge, Washington ”

“ I like the fit and finish, colors, skylight and nice cabinets.

Robert E. - La Center, Washington ”

6 Year Limited Structural & 2 Year Component Warranty

General Coach provides you with a two-year limited warranty on your truck camper and General Coach also includes a six-year limited warranty which covers the structural integrity of your truck camper. Additionally our major component/appliance manufacturers provide a limited two-year warranty on their products. This added warranty is unique to the recreational vehicle industry and should be one of your very serious considerations when choosing your next R.V.

Corsair Excella – Excellence You Deserve!



The popular Model 990 shown above in the Sandpiper Interior. Slide-Out rooms provide interior spaciousness. A lower step-up to the bed makes access easier and bedrooms have superior headroom compared to other brands.



Molded fiberglass front caps are aerodynamically designed to eliminate wind resistance and provide protection against rock damage. Bedrooms have superior headroom not found in other campers.



A redesigned optional bumper with a 2 step foldup and one step add on for easy access to the entrance. A large fold-away assist rail is a standard safety convenience. A ladder provides access to the roof and an optional awning over the entrance door extends 8'. You'll love the long item storage that basements provide with a convenient pull out tray. Holding tanks are enclosed and heated direct from the furnace and both the upper and lower floors are fully insulated with high density block foam insulation. "Happy-Jac" electric jacks are standard on most models.



Optional thermopane double glazed windows eliminate condensation and allow all season comfort. Solar reflective glass filters UV rays and reduces heat build-up in summer. By far the best made window in the RV industry.

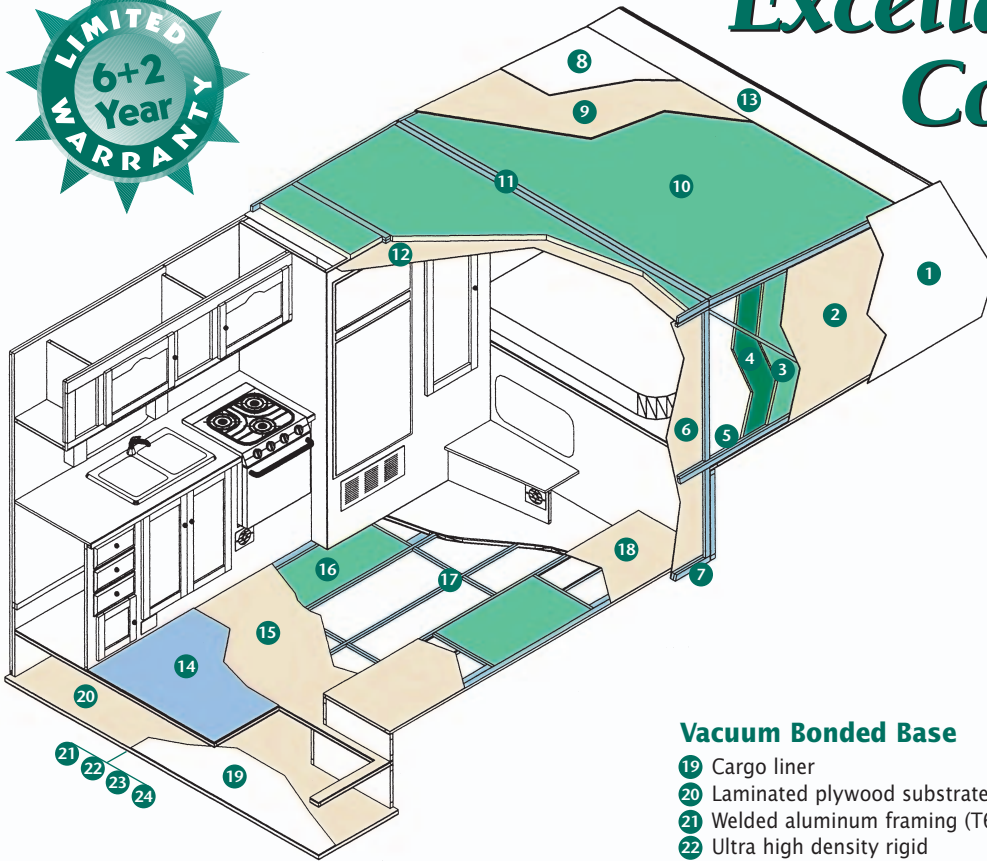
Corsair excella



The Model 860 shown above in the popular Autumn Fern Interior can fit short or long box trucks. There's nothing small about this camper with a large pantry and ample drawers with steel guides and rollers.



Excella Construction



2" Vacuum Bonded Wall

- 1 Laminated "Medallion" Filon fiberglass gelcoat exterior
- 2 Laminated plywood substrate
- 3 Ultra high density rigid polystyrene insulation
- 4 Ultra high density rigid polystyrene insulation thermal break (n/a 9'2")
- 5 Welded aluminum framing (T6061)
- 6 Laminated interior panel - plywood
- 7 Aluminum studs doubled at camper-truck anchors

Vacuum Bonded Roof

- 8 Dicor vinyl roofing material
- 9 Laminated plywood substrate
- 10 Ultra high density rigid polystyrene insulation
- 11 Welded aluminum framing (T6061)
- 12 Laminated interior ceiling panel - plywood
- 13 One piece fiberglass front cap

Vacuum Bonded Floor

- 14 Linoleum floor covering
- 15 Laminated 3/8" plywood
- 16 Ultra high density rigid polystyrene insulation
- 17 Welded aluminum framing (T6061)
- 18 Laminated plywood substrate

Vacuum Bonded Base

- 19 Cargo liner
- 20 Laminated plywood substrate
- 21 Welded aluminum framing (T6061)
- 22 Ultra high density rigid polystyrene insulation
- 23 Laminated plywood substrate
- 24 Protective polypropylene underbelly

✳️ NORTH AMERICA'S BEST POLAR PAK!

- ✳️ 2" vacuum laminated walls with high density block foam insulation
- ✳️ Full aluminum welded frame with thermal break to interior
- ✳️ Fully insulated basement with tanks & valves heated direct from furnace
- ✳️ 25,000 BTU furnace ducted to all areas of coach including basement storage
- ✳️ Residential dual pane skylights with exclusive condensation control
- ✳️ Solar reflective double glazed thermopane windows, condensation control in colder weather
- ✳️ Fantastic Fan with intake or exhaust eliminates condensation
- ✳️ Insulated compartment doors and seat bases
- ✳️ Aerodynamic molded front fiberglass cap eliminates front window.

Our Commitment to Customer Satisfaction

Corsair's full two-year limited warranty is reinforced by a limited **six-year structural integrity warranty and a two-year component warranty**. Quality assurance you can depend on! This added warranty is unique to the recreational vehicle industry and should be one of your very serious considerations when choosing your next R.V.

Corsair is backed by an international dealer and service network that stretches from coast-to-coast for North American worry free travel. These dealers and dealer service technicians will gladly attest to the excellence of Corsair's construction and quality.

Join thousands of General Coach customers in North America and take command of the road with your Corsair. **A buying decision you'll never regret.**

We are very proud of our highly skilled people who exercise extreme care in the manufacture of every Corsair. We invite you to visit us at General Coach, see the quality process yourself. We know you'll be impressed and we know you'll love the Okanagan Valley.



GENERAL COACH

P.O. Box 700
Oliver, BC V0H 1T0
Telephone: (250) 498-3471
Fax: (250) 498-3240

E-mail:
gcsales@otvcablelan.net

Website:
www.generalcoach.bc.ca



THOR

NORTH AMERICA'S BEST RV VALUE

Proudly Presented By



Printed in Canada by
Wayside Press Ltd.