

ROCKWOOD FIFTH WHEELS

ROCKWOOD

PROVIDING OUTDOOR FUN SINCE 1974.



ULTRA LITE
SIGNATURE BY ROCKWOOD

FIFTH WHEELS



ULTRA LITE

2896MB

LIGHTEN YOUR LOAD AND RELAX IN COMFORT. The Rockwood Ultra Lite Fifth Wheel models provide excellent light weight alternatives for most owners of 1/2 ton pick up trucks. Equipped with a standard LCI Turning Point hitch, you can tow with almost any size truck bed. Our Ultra Lite fifth wheels have been custom designed with the best in styling and amenities while keeping your towing needs in mind.



STANDARD CHAMPAGNE EXTERIOR



SLATEWOOD / STONE



2441WS



2621WS



NEW

2622RK



NEW

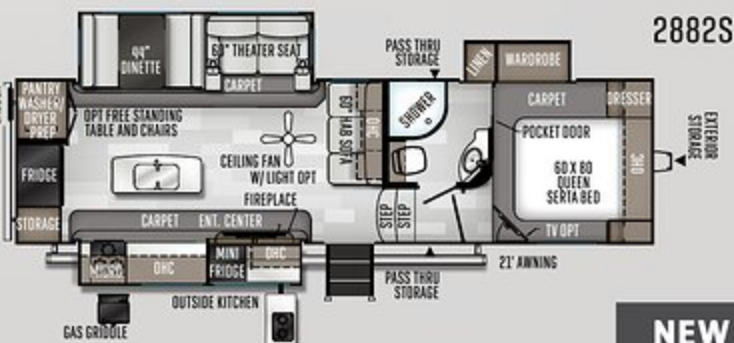
2781WS



2881S

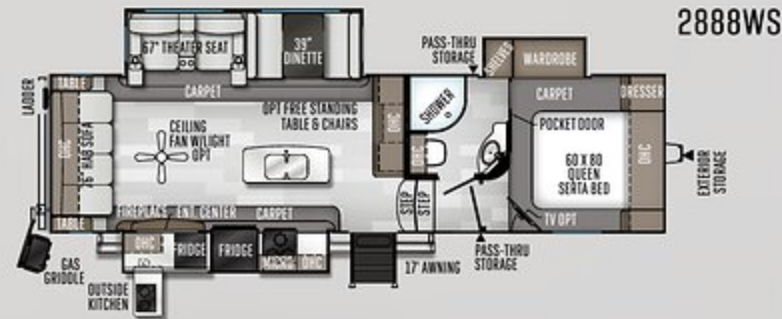


2882S

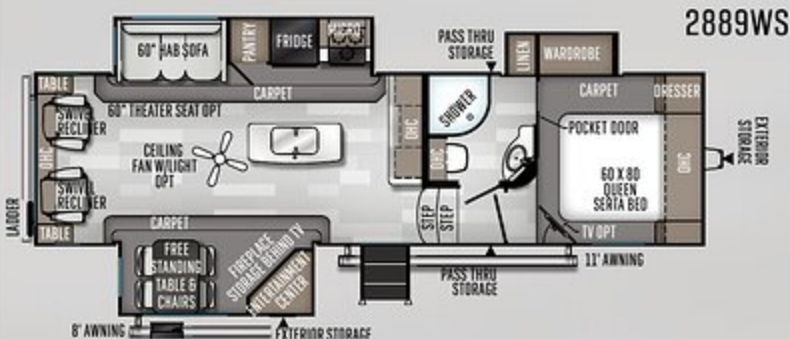


NEW

2888WS



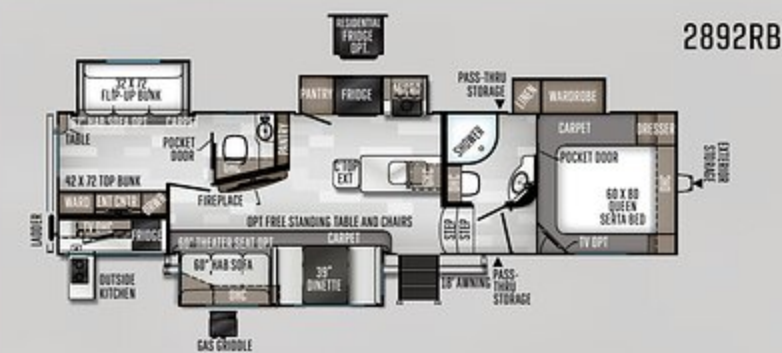
2889WS



2891BH



2892RB



2896MB



SLIDE DETAILS

2892RB, 2889WS, 2896MB, 2781WS, 2621WS



2622RK, 2891BH, 2898S, 2441WS



2898KS



| MODEL NUMBER | 2441WS | 2621WS | 2622RK | 2781WS | 2881S | 2882S | 2888WS | 2889WS | 2891BH | 2892RB | 2896MB | 2898KS |
|--------------------------|--------|---------|---------|--------|--------|--------|--------|--------|--------|--------|--------|--------|
| Unloaded Vehicle Weight* | 7630 | 8229 | 7909 | 8472 | 8433 | 9338 | 8950 | 8966 | 8987 | 9672 | 9428 | 9402 |
| Base Dry Hitch Weight | 1295 | 1335 | 1230 | 1280 | 1356 | 1371 | 1460 | 1437 | 1428 | 1554 | 1566 | 1456 |
| Base Dry Axle Weight | 6276 | 6835 | 6620 | 7133 | 7018 | 7908 | 7431 | 7470 | 7500 | 8059 | 7803 | 7887 |
| Cargo Capacity | 2065 | 1606 | 1921 | 1608 | 1723 | 2033 | 2510 | 2471 | 2441 | 1882 | 2138 | 2054 |
| Length (Hitch to Bumper) | 28' 5" | 29' 10" | 29' 10" | 32' 5" | 32' 5" | 32' 5" | 32' 5" | 32' 5" | 36' | 36' | 36' | 36' |
| Width | 96" | 96" | 96" | 96" | 96" | 96" | 96" | 96" | 96" | 96" | 96" | 96" |
| Height (w/ AC) | 157" | 157" | 157" | 157" | 157" | 158" | 157" | 158" | 157" | 157" | 157" | 157" |
| Fresh Water Capacity | 60 gal | 60 gal | 60 gal | 60 gal | 60 gal | 60 gal | 60 gal | 60 gal | 60 gal | 60 gal | 60 gal | 60 gal |
| Gray Water Capacity | 40 gal | 80 gal | 80 gal | 80 gal | 80 gal | 70 gal | 70 gal | 80 gal | 80 gal | 80 gal | 80 gal | 80 gal |
| Black Water Capacity | 40 gal | 40 gal | 40 gal | 40 gal | 40 gal | 40 gal | 40 gal | 40 gal | 40 gal | 80 gal | 40 gal | 40 gal |

The Unloaded Vehicle Weight (UVW) listed represents the weight of one trailer with that model's standard equipment including the content of specified option packages. * See back cover for further specification definitions.

SIGNATURE

BY ROCKWOOD

8299SB

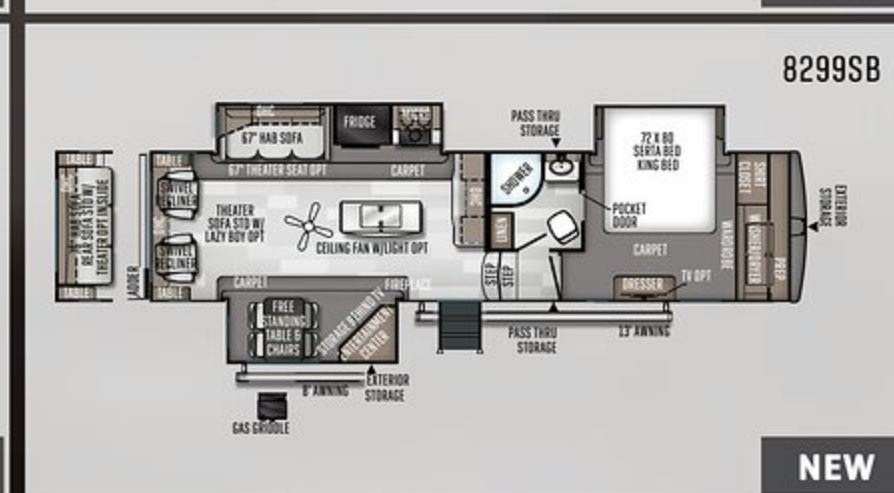
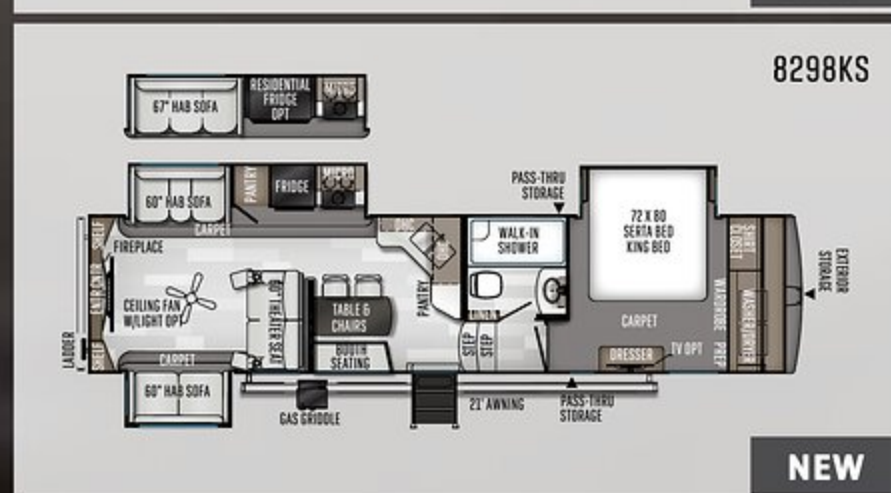
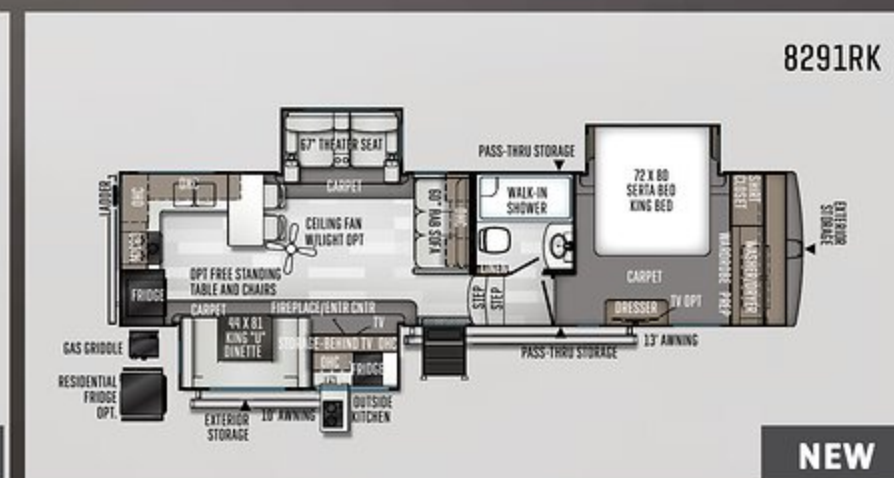
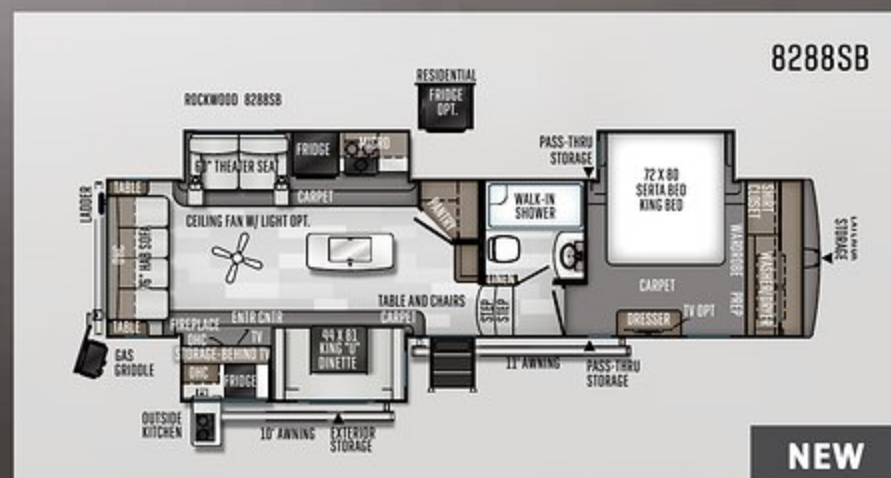
PROVIDING THE
COMFORTS OF HOME
WHILE ON THE ROAD.

Rockwood takes pride in ensuring that each floorplan is able to suit the needs of your active family. Quality craftsmanship and attention to detail have been put into our Signature fifth wheels which gives you the flexibility you won't find in comparable products. Our fully equipped kitchens with modern conveniences and spacious bedrooms featuring residential king bed-slideouts will make you feel like you never left home.



AMERICAN MAPLE / CHOCOLATE





OPTIONAL WHITE EXTERIOR



STANDARD CHAMPAGNE EXTERIOR

SLIDE DETAILS

2892RB, 2899WS, 2896MB,
2781WS, 2621WS



SOFA OR CHAIR IS ANGLED
IF IN THE SAME SLIDE AS TABLE & CH
OR KING U OPTION



2622RK, 2891BH
8299BS, 2441WS



| MODEL NUMBER | 8299SB | 8291RK | 8298KS | 8288SB |
|--------------------------|--------|---------|--------|--------|
| Unloaded Vehicle Weight* | 9940 | 10028 | 9998 | 10321 |
| Base Dry Hitch Weight | 1555 | 1699 | 1520 | 1560 |
| Base Dry Axle Weight | 8326 | 8270 | 8419 | 8702 |
| Cargo Capacity | 2415 | 2471 | 2322 | 2039 |
| Length (Hitch to Bumper) | 35' 5" | 35' 11" | 36' 7" | 36' 7" |
| Width | 96" | 96" | 96" | 96" |
| Height (w/ AC) | 158" | 158" | 158" | 158" |
| Fresh Water Capacity | 60 gal | 60 gal | 60 gal | 60 gal |
| Gray Water Capacity | 80 gal | 80 gal | 80 gal | 70 gal |
| Black Water Capacity | 40 gal | 40 gal | 40 gal | 40 gal |

The Unloaded Vehicle Weight (UVW) listed represents the weight of one trailer with that model's standard equipment including the content of specified option packages. * See back cover for further specification definitions.

POPULAR FEATURES

FEATURES THAT MAKE YOUR TRIPS FEEL LIKE HOME. Rockwood takes careful consideration to each feature added into each product produced. Every detail is considered ranging from extra sleeping room, storage, comfort and convenience. Take time to review the features listed below and match them with the competition's products. We're confident you'll discover Rockwood is the superior choice.



STANDARD CHAMPAGNE EXTERIOR



- A Power Awning with adjustable rain dump and LED lighting [Std.]
- B Large LCD TVS and entertainment center with "Bluetooth" technology.
- C Radius glass door shower [N/A Models with tub bases]
- D Solid surface counter top with under mount sink
- E Water Filtration System [Std. Opt.]
- F Nautilus Water Management System [Std.]
- G Deluxe hide-a-bed sleeper sofa w/ comfortable, easy set-up bed [Per floorplan]



A Rear camera prep. (Std. all models) The Furrion observation camera system with digital wireless technology is sold separately.

B 2" Accessory Hitch Receiver (std.) 300 LB capacity

C WiFi Ranger Sky 4 WiFi Booster and available internet connectivity (Std.)

D The LCI Turning Point hitch provides:
1) Full 90 degree worry-free turning,
2) Eliminates the need for a slider hitch
3) Greatly enhances maneuverability

E Tire Pressure Monitoring System (Std.)

F Solar panel prep (Std. All Models) The Zamp 40 amp. portable solar panel shown is sold separately.

G Hide-a-bed sofa. Fabric matched to decor.

H Swivel Rocker Recliner where applicable. Fabric to match. (Per floorplan)

I La-Z-Boy swivel recliner where applicable. Fabric to match decor. (Opt.)

J 67" Heated theatre seating per plan where available. Fabric matched to decor. (Per floorplan)

CHOCOLATE

SOFA, CHAIRS, DINETTE CUSHIONS
(LEATHER APPEARANCE) (LEVI CHOCOLATE)

ACCENTS (TYPHOON PEBBLE)



CURTAINS (DELORES GRAPHITE)



SLATEWOOD
STANDARD



AMERICAN MAPLE
OPTIONAL



STANDARD
FLOOR COVERING



OPTIONAL
FLOOR COVERING



CARPET

STONE

SOFA, CHAIRS, DINETTE CUSHIONS
(LEATHER APPEARANCE) (OMBRE PEBBLE)

ACCENTS (OZZI MICA)



CURTAINS (TYPHOON PEBBLE)

ACCENTS (OMBRE SEAL)

ROCKWOOD FIFTH WHEEL

QUALITY CONSTRUCTION

THE DETAILS ARE WHAT MAKE ALL THE DIFFERENCE. Rockwood takes pride in constructing the very best products possible in each price point. From our entry level units to our top of the line products, no short cuts are taken to achieve excellence. From the all-steel I-beams to the residential interior amenities to the vacuum-bonded exteriors, Rockwood products are quality built from the ground-up.



- A** Glued and screwed wood cabinetry
- B** Aluminum dinette frames for added strength and weight savings
- C** 5/8" Tongue & Groove Plywood sub-floor glued and screwed down.
- D** Extra large dinette storage drawers and full extension metal drawer guides in the kitchen
- E** Dexter Torflex Axles:
 - Independent wheel suspension and self-damping action
 - Rubber cushioning eliminates metal-to-metal contact.
 - Forged torsion arm for maximum strength
- Models are also equipped with E-Z Lube® System and Nev-R-Adjust® Brakes.
- F** Enclosed underbelly protects trailer components as well as increasing aerodynamics
- G** Aluminum Frame Construction with high gloss fiberglass exterior and deluxe graphics

ROOF CONSTRUCTION



4" thick vacuum-bonded radius roof with built in insulated A/C ducts and vaulted ceiling providing superior insulation and more interior height.

INSPECTION



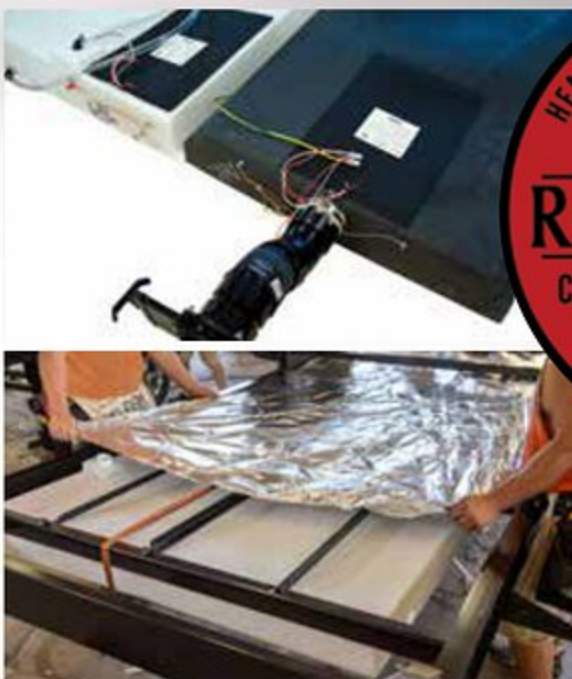
Rigorous aesthetic and full functional testing performed on every trailer produced

VACUUM-BONDED LAMINATED CONSTRUCTION



Rockwood is one of only a few manufacturers with six sided aluminum framing. Vacuum bonded walls and roof to ensure a well-insulated, light weight, strong structural trailer.

CLIMATE PROTECTION



Heated holding tanks, enclosed underbelly's, 35K BTU furnaces and a radiant foil barrier in the underbelly, front cap and slide-out floors lead to a more comfortable coach year-round.

WALL STRENGTH

Structurally engineered materials makes our vacuum-bonded walls some of the strongest in the industry.



STANDARDS & OPTIONS

ROCKWOOD ULTRA LITE & SIGNATURE BY ROCKWOOD

| MODELS | UL | S | MODELS | UL | S | MODELS | UL | S |
|--|-----|---------------|--|-----|---|---|-----|----|
| STANDARD PACKAGES INCLUDE: | | PKG. A | Outside Speakers | S | S | Solid Wood Cabinet Doors and Drawers | S | S |
| 6 Sided Aluminum Cage Construction | S | S | LCD TV With Upgraded Sound Bar Speaker System and | S | | Upgraded Cabinetry Hardware | S | S |
| Vacuum Laminated 1 Piece Roof and Walls | S | S | Multi-directional Antenna | S | S | Engineered Mold and Mildew Resistant Floor Covering | S | S |
| 5/8" Plywood Tongue and Groove Sub Floor | S | S | Multi Zone Stereo w/ DVD/CD/Blu Ray/ AM&FM, Plus | | | Bedroom Carpet | S | S |
| Aluminum Bed and Dinette Base | S | S | Bluetooth Control and MP3 Player Hook up (Blu Ray N/A on UL) | S | S | Step Mount Vacuum Cleaner | - - | S |
| Fiberglass Exterior with High Gloss Finish | S | S | Touch Button Control Pad w/ Bluetooth App Control | - - | S | 35,000 BTU Floor Ducted Furnace | S | S |
| High Gloss Front Cap | S | S | WiFi Ranger Sky 4 (LTE ready to create your own WiFi when WiFi | | | 15,000 BTU Ducted Roof Air | 0 | 0 |
| Enclosed Underbelly | S | S | is not available. SIM Card and LTE module are sold separately) | S | S | 2nd Roof A/C w/ Chill Chaser Heat Strip in Bedroom with | | |
| Thermostatically Controlled Heated Holding Tanks | S | S | Torsion Axle, Rubber-Ryde Suspension | S | S | 50 Amp Service and Digital Dual Thermostat | 0 | 0 |
| Tinted Bonded Frameless Windows | S | S | Polished Alloy Wheels | S | S | 50 Amp Service with 2nd A/C prep | S | S |
| Power Awning w/ Adjustable Rain Dump and LED Light Strip | S | S | Spare Tire Carrier & Cover | S | S | Fireplace, Where Available | S | S |
| LCI *Turning Point Pin Box Hitch | S | S | Nitro Filled Tires | S | S | 110V Ceiling Fan | 0 | 0 |
| 13,500 BTU Ducted A/C with 50 Amp Service and Prepped for 2nd A/C | S | S | Slam Latch Baggage Doors and Magnetic Door Holds | S | S | Carbon Monoxide Detector | S | S |
| Upgraded 22" Gas Oven | S | S | Rear Observation Camera Prep w/ Molded Mounting Plate | S | S | 12 Volt Power Plug With USB Charging Port | S | S |
| Microwave Oven | S | S | Solar Panel Prep | S | S | CSA (Canadian Standards) | 0 | 0 |
| Recessed Cooktop and Oven w/ Flush Mount Cover | S | S | Rear Ladder | S | S | Battery Disconnect Switch | S | S |
| Hidden Hinge Cabinet Doors | S | S | Black Tank Flush | S | S | 55 Amp Converter With Charger | S | S |
| Residential Full Extension Metal Soft Close Drawer Guides | - - | S | Strut Assist Fold-Out Steps | S | S | Flush Mount Ceiling LED 12 Volt Interior Lighting w/ | | |
| Extra Large Double Door 2 Way Refrigerator | S | S* | Radiant Foil Insulated Underbelly, Fronts and Slide-out Floors | S | S | Multiple Switches | S | S |
| Solid Surface Kitchen Countertops | S | S | | | | Interior Floor Light by Entrance Door | S | S |
| Kitchen Backsplash | S | S | INTERIOR FEATURES | | | Deluxe Tri-Fold Sleeper Sofa | S* | S* |
| Flush Mount Stainless Steel Sinks With "High Rise" Lift-Off Faucet | S | S | Slatewood Interior | S | S | Push Back Swivel Rocker Recliner (Std. 2889WS, 8299SB) | S* | S* |
| 6 Gallon Quick Recovery Auto Ignition Gas/Electric Water Heater | S | S | American Maple Interior | 0 | 0 | Lazy Boy Swivel Rocker Recliner (8299SB Only) | - - | 0* |
| Shower Miser Water Saver System | S | S | Decorative Slide Out Fascia | S | S | Theatre Seating | 0* | S* |
| 360 Siphon Black Water Venting | S | S | Decorative Cove Trim Along Ceiling and Overhead Cabinets | S | S | Theater Seat ILO Sofa | 0* | 0* |
| Residential Serta Mattress | S | S | Screwed and Glued Cabinetry | S | S | Deluxe Interior Window Treatment | S | S |

STANDARDS & OPTIONS ARE SUBJECT TO CHANGE.



| MODELS | UL | S |
|---|----|----|
| Day/Night Pull Shade | S | S |
| Day/Night Roller Shades | O | O |
| 9 Cubic Ft. Gas / Electric Refrigerator | -- | S* |
| 12 Cubic Foot Auto Gas/Electric Refrigerator W/ | | |
| Stainless Steel Panels (8299SB) | -- | S* |
| 8 Cubic Foot Gas/Electric Refrigerator | S | -- |
| 22 Cubic Foot Residential Refrigerator w/ Inverter (Per floorplan) | O* | O* |
| 12 Cubic Foot Residential Refrigerator w/ Inverter (Per floorplan) | O* | O* |
| Decorative Wood Refrigerator Panels | S* | S* |
| Three Burner High Output Gas Range with Glass Top Cover | S | S |
| Water-Pur Filtration System | S | S |
| Counter Top Extension (Per floorplan) | S | S* |
| Trash Can in Kitchen (Most Models) | -- | S |
| Bathroom Skylight | S | S |
| Interior Gas and Electric Switches | S | S |
| Water Heater By-Pass Kit | S | S |
| Residential Style Porcelain Bowl Foot Flush Toilet | -- | S |
| Maxxair® Ventilation Fan and Vent Cover | S | S |
| Extra Maxxair® Ventilation and Vent Cover | O | O |
| King Bed Slide | -- | S |
| Washer/Dryer Prep (2881S, 2882RK, 2891BH, 8288SB, 8291RK, 8298KS, 8299SB) | S* | S* |
| Larger 76" Entry Doors | S | S. |

| MODELS | UL | S |
|--|----|---|
| EXTERIOR FEATURES | | |
| Fully Aluminum Frame (Floor, Sidewall, & Roof) | S | S |
| Insulation Factors R-7 Side Wall, R-12 Floor and R-14 Roof | S | S |
| Radius Roof With Vaulted Interior Ceilings | S | S |
| One Piece Seamless Roofing Membrane | S | S |
| TV Antenna w/ Cable & Satellite Hook-Up | S | S |
| Bike Rack Ladder Attachment | O | O |
| Rear Bike Deck (250 lbs. Max Load) | O | O |
| Laminated Champagne Color Fiberglass Sidewalls | S | S |
| Laminated White Fiberglass Sidewalls | O | O |
| Electric Slide-Outs | S | S |
| Decorative Frame Skirting | S | S |
| Distinctive Black Exterior Trim | S | S |
| Power Awning With Adjustable Rain Dump and LED Lighting | S | S |
| Shielded Awning Covers | -- | O |
| Awning Slide Topper | O | O |
| 30" Primary Entrance Door | S | S |
| Friction Hinge Entrance Door | S | S |
| Lighted Entry Step | S | S |
| Large Grab Handles | S | S |
| Tinted Bonded Frameless Windows | S | S |
| Thermo Pane Window Upgrade | O | O |

| MODELS | UL | S |
|---|----|---|
| Outside Griddle w/ LP Hookup and Work Table | S | S |
| Outside Shower | S | S |
| Front Outside "Trunk" Storage Separated From Heated Pass Thru | | |
| Storage Compartment | S | S |
| Outside Antifreeze Inlet for Convenient Winterizing | S | S |
| Slam Latches on Most Exterior Storage Doors | S | S |
| Magnetic Storage Door Latches | S | S |
| Two 30 lb Gas Bottles | S | S |
| Enclosed Gas Bottles w/ Storage Door Access | S | S |
| Surface Coated Steel I-Beam Frame | S | S |
| Power Front Jack | S | S |
| Power Stabilizer Jacks | O | S |
| 4.0 Leveling Jacks | O | O |
| Easy Lube Axles & Never Adjust Brakes | S | S |
| 16" E-Rated Tires | S | S |
| Nautilus Water Management System | S | S |
| Roof Mount Solar Prep | O | O |
| 2" Hitch Receiver | S | S |
| Tire Pressure Monitoring System (TPMS) | S | S |

UL = ULTRA LITE FIFTH WHEEL, S = SIGNATURE FIFTH WHEEL, S = STANDARD, O = OPTIONAL, -- NOT AVAILABLE, * = SELECTED MODELS

Look for our other popular lines of Rockwood camping trailers.



ROCKWOOD TENT CAMPERS



ROCKWOOD GEO PRO



ROCKWOOD TRAVEL TRAILERS

FREE MEMBERSHIP
to Forest River Owners' Group

www.forestriverfrog.com



PRE-DELIVERY INSPECTION FACILITY

20,000 square feet of quality assurance. The bare essentials for a premium product. This state-of-the-art facility gives immediate daily feedback to production for quality assurance in every unit built.

Specification Definitions

GVWR (Gross Vehicle Weight Rating) - is the maximum permissible weight of the unit when fully loaded. It includes all weights, inclusive of all fluids, cargo, optional equipment and accessories. For safety and product performance do NOT exceed the GVWR.

GAWR (Gross Axle Weight Rating) - is the maximum permissible weight, including cargo, fluids, optional equipment and accessories that can be safely supported by a combination of all axles.

UVW (Unloaded Vehicle Weight)* - is the typical weight of the unit as manufactured at the factory. It includes all weight at the unit's axle(s) and tongue or pin and LP Gas. The UVW does not include cargo, fresh potable water, additional optional equipment or dealer installed accessories.

*Estimated average based on standard build optional equipment.

CCC (Cargo Carrying Capacity)** - is the amount of weight available for fresh potable water, cargo, additional optional equipment and accessories. CCC is equal to GVWR minus UVW. Available CCC should accommodate fresh potable water (8.3 lbs per gallon). Before filling the fresh water tank, empty the black and gray tanks to provide for more cargo capacity.

** Estimated average based on standard build optional equipment

Each Forest River RV is weighed at the manufacturing facility prior to shipping. A label identifying the unloaded vehicle weight of the actual unit and the cargo carrying capacity is applied to every Forest River RV prior to leaving our facilities.

The load capacity of your unit is designated by weight, not by volume, so you cannot necessarily use all available space when loading your unit.

Rockwood Warranty. Our Promise.

FOR DETAILS ON ROCKWOOD'S COMPLETE WARRANTY PROGRAM, SEE YOUR ROCKWOOD DEALER. When it comes to backing products with the same quality and commitment it does when it begins the manufacturing process, the only name you have to remember when you're looking for a recreational vehicle is Rockwood. Rockwood offers the following additional limited warranties to the original purchasers. Consult written warranty for details.

1. Twelve-year vinyl roof warranty. 2. Two-year fiberglass warranty. 3. Ten-year Torflex® axle warranty. 4. One-year bumper to bumper warranty.



Learn More
Scan this barcode using a QR Reader on your smart phone to learn more about Forest River.



A Berkshire Hathaway company.



201 WEST ELM MILLERSBURG, IN 46543 WWW.FORESTRIVERINC.COM/ROCKWOOD 574.642.2640

CUSTOMER SATISFACTION



www.ForestRiverBuyLocal.com

All information contained in this brochure is believed to be accurate at the time of publication. However, during the model year, it may be necessary to make revisions and Forest River, Inc., reserves the right to make all such changes without notice, including prices, colors, materials, equipment and configurations as well as the addition of new models and the discontinuance of models shown in this brochure. Therefore, please consult with your Forest River dealer and confirm the existence of any materials, design or specifications that are material to your purchase decision. Litho. U.S.A. FOR 1711 P&W: 2019.10.16

YOUR ROCKWOOD DEALER

24/7 EMERGENCY ROADSIDE ASSISTANCE WITH VEHICLE PURCHASE*

TOWING
JUMP-STARTS
TIRE CHANGES
FLUID DELIVERY
LOCKOUT
SERVICE

WINCH-OUT
MOBILE MECHANIC
TECHNICAL
SUPPORT
DEALER LOCATOR
SERVICES



*VALID FOR 1 YEAR FROM DATE OF PURCHASE