

# ALPINE

LUXURY FIFTH WHEELS



WARRANTY FOR  
FULL TIME RVING\*

\*REFERENCE KEYSTONE RV COMPANY OWNERS MANUAL FOR LIMITED WARRANTY DETAILS



LIVE IT OUT.

# ALPINE



LUXURY FIFTH WHEELS

## WHERE LUXURY IS NOT AN OPTION – IT'S STANDARD.

Alpine fifth wheel trailers are designed for a new generation of campers who are looking for contemporary styling, unique floorplans, and modern amenities, like on-demand hot water, iN-Command™ smart RV controls, and a powered cord reel. Designed like no other luxury fifth wheel, Alpine RV's offer a residential feel with high ceilings, almost 7' tall slide outs, 100" wide-body construction, and panoramic frameless windows.

For more information, please visit [keystonerv.com/Alpine](http://keystonerv.com/Alpine)

# KEYSTONE EXCLUSIVE INNOVATIONS

Year after year, Keystone RV's experienced team delivers "Built For The Long Haul" quality you expect and exclusive innovations you won't find anywhere else.



## 3-YEAR LIMITED STRUCTURAL WARRANTY, 1-YEAR LIMITED BASE WARRANTY

Every new Keystone RV comes with the industry's best three-year limited structural warranty AND a one-year limited base warranty. Ask your dealer, visit [keystonerv.com](http://keystonerv.com), or call Keystone Owner Relations for details.



### KeyTV™

No more connection guesswork or poor reception. KeyTV offers a game-changing, single point of control of over-the-air, cable, and satellite feeds.



### Hitch Vision™

Simplifies hitch hook-up with "no looking back" convenience.



### Color-Coded Unified Wiring Standard

Easy-to-trace circuits simplify electrical and entertainment system troubleshooting.



### In-floor Heating Ducts

Distributes heat evenly through your coach for superior comfort.



### Road Armor™ Suspension

Equalizes axle load to dampen shock and vibration.



### Tru-fit™ Slide Construction

A more durable slide room design that minimizes functional motor and structural stress and resists leaking.



more product detail at  
[www.keystonerv.com/Alpine](http://www.keystonerv.com/Alpine)



# QUITE STYLISH

Alpine's updated design is the result of years of feedback from our owners. Every feature is strategically placed for practicality and to maximize functionality for full-time RVing. Our goal was to create a beautiful feel throughout the coach — we accomplished this by fine-tuning the luxuries of Alpine. We added beautiful polished natural stone solid surface countertops and high-contrast linear tile backsplash. You'll also notice our new gorgeously-grained soft gray finished woodgrain throughout.





## ROOM TO BREATHE

Spacious master suite offers comfort and privacy for a cozy night in.



## WELL-DESIGNED STORAGE

Thoughtful interior and exterior storage allows you to pack what you need for extended-stay camping.



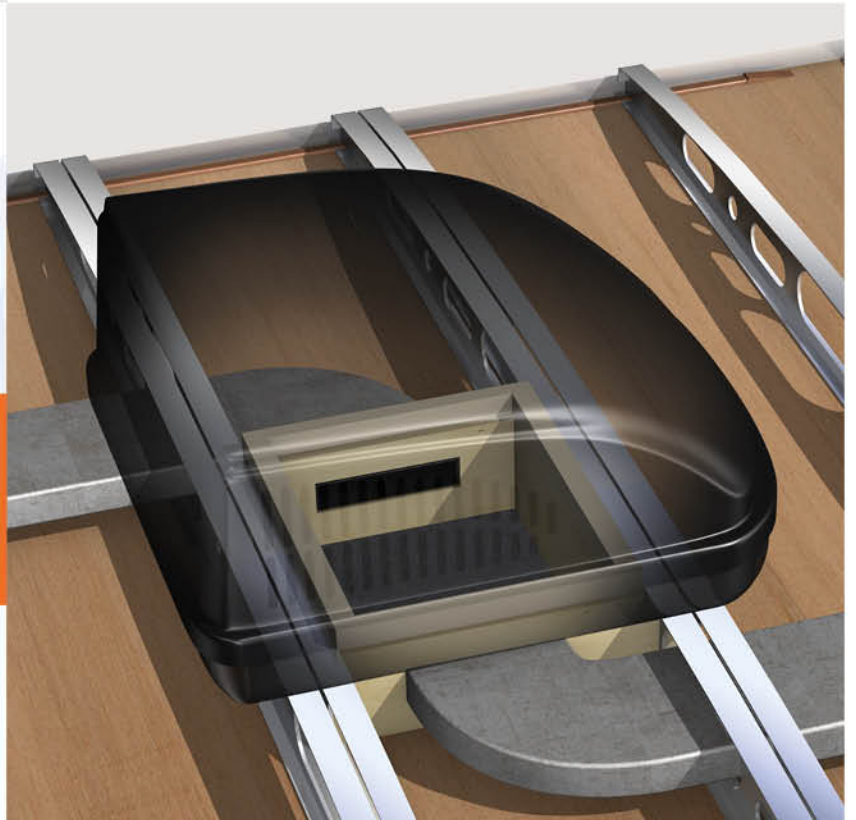


## NEW FULL-BODY PAINT DESIGN

Full-body paint is Alpine's hottest upgrade at the moment. Offered in Black Diamond and Champagne colorways.

## NEW 3RD AIR CONDITIONER OPTION

Alpine introduces maximum cooling power with the addition of an optional, third air conditioner on most models.



# MODERN AMENITIES

From cordless chargers to on-demand water heaters, Alpine brings a more modern approach to camping.



1



2



3



4



5



6



7



8



9

## 1. FURRION® CHEF COLLECTION

Stainless steel three-burner cook top, oven w/enhanced safety features, and 1.5 cu ft convection microwave.

## 2. POLAR PACK ALL SEASON PROTECTION

Exclusive all season Polar Pack protection allows you to camp in nearly any condition. .

## 3. IN-COMMAND® GEN 3 W/GLOBAL CONNECT

Total control over HVAC, awnings, lighting and monitoring system from your smartphone.

## 4. DUAL QUIET COOL AIR CONDITIONERS

High-pressure 15,000 BTU units with Whisper Quiet Technology, with electric heat pump.

## 5. ONE TOUCH 6-POINT HYDRAULIC LEVEL UP SYSTEM

Automated level system control panel for quick and easy setup

## 6. SUBURBAN® NAUTILUS ON-DEMAND WATER HEATER

Instant and endless hot water at the turn of a handle. Shower like you are in your home.

## 7. PREMIUM ENTERTAINMENT

Outfitted with 50" flat panel televisions, DVD players, and high definition stereo speakers, fireplaces and convenient storage cubicles.

## 8. BACKUP AND SIDE CAMERA PREP

Includes left and right side camera prep, plus rear camera prep. Rear wall is double insulated and laminated.

## 9. WIRELESS CHARGING

Quickly and conveniently transfer power to your device without clunky cables (select models).



more product detail at  
[www.keystonerv.com/Alpine](http://www.keystonerv.com/Alpine)

## ALPINE | TOP FEATURES

- Stunning solid-wood cabinet doors, drawer fronts, cabinet framing and slide fascia
- Furrion® Chef Collection kitchen appliances
- EXCLUSIVE KeyTV™ Keystone's revolutionary single-source, easy-to-use controller for over-the-air, cable and satellite television
- 40" fireplace that produces 5,000 BTU of electric heat
- Theater seats with heat, massage functions and USB charging ports
- Cordless day/night roller shades provide superior insulation, clear views, privacy during the day, and nighttime blackout coverage
- Stackable washer and dryer prepped for easy install and use
- iN-Command® Generation 3 w/ Global Connect control system gives owners total control over power, slide-rooms, awnings, HVAC and more, from a convenient master control panel as well as a Wi-Fi-enabled smartphone application
- Summit slide-rooms with 6' 10" interior height
- Two panoramic 5' x 4' slide box windows (select models)
- Spacious 100" wide-body construction
- Strut-assisted Solid Step® by Lippert Components
- Two, high-pressure 15,000 BTU air conditioners with Whisper Quiet Technology, standard
- One 16,500 BTU electric heat pump standard (in rear air conditioner)
- Exclusive all season Polar Pack protection allows you to camp in nearly any condition. Rated and tested to perform in all seasons.
- 200 cu. ft. heated basement storage with tie-downs
- 2" accessory or towing hitch with 300 lb carrying capacity
- Six-point hydraulic auto-leveling system
- EXCLUSIVE Road Armor™ suspension equalizes axle load to dampen shock and vibration
- Electric power cord reel
- Suburban® Nautilus on-demand water heater for instant and endless hot water



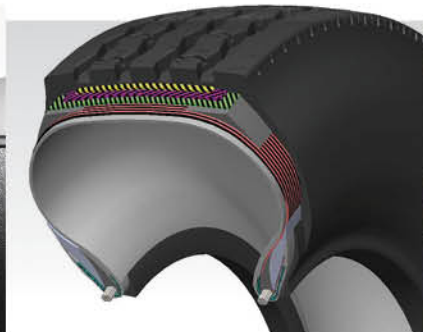
### STRUT ASSISTED SOLID STEP® BY LIPPERT COMPONENTS

Safe and secure with an extra-wide top step and patent-pending "Lift & Level" technology. Folds easily to stow inside entry door.



### EASY-ACCESS WATER WORKS CENTER

Fully enclosed and heated, provides quick and easy access to all your utility hook-ups.



### HEAVY DUTY G-RATED TIRES

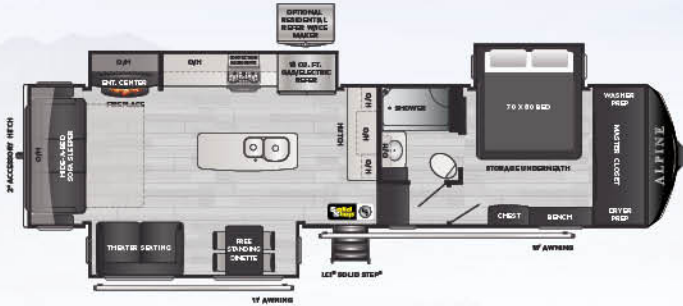
Upgraded, 14-ply tires for maximum towing security and confidence. 6-year limited warranty w/2-year road side assistance. Rated to 75 mph.



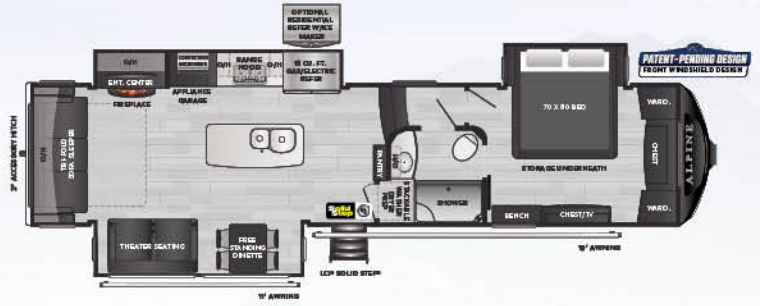
### 2" ACCESSORY RECEIVER HITCH

Every Alpine comes standard with a 300 lb carrying capacity receiver hitch. Perfect for use with any accessory approved for RV use. Check accessory owner's manual.

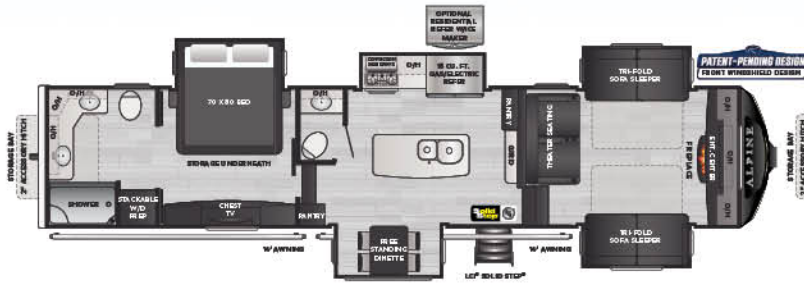




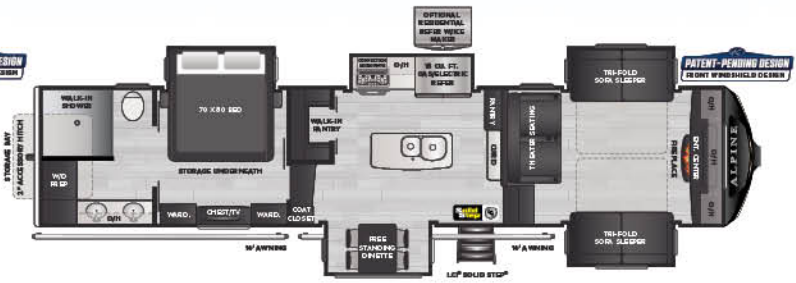
**NEW!** 3220RL | Rear living, mid-kitchen, master closet



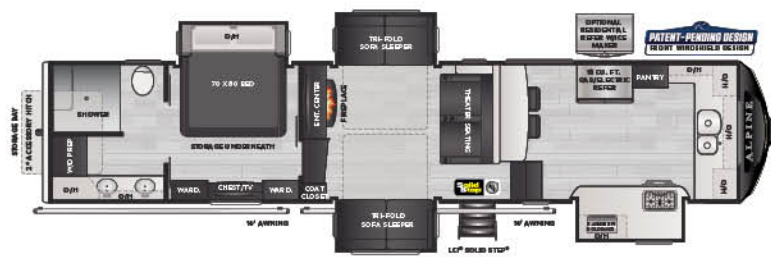
3650RL | Rear living, range hood, front windshield



3700FL | Front living, 1 1/2 bath, master suite, front windshield



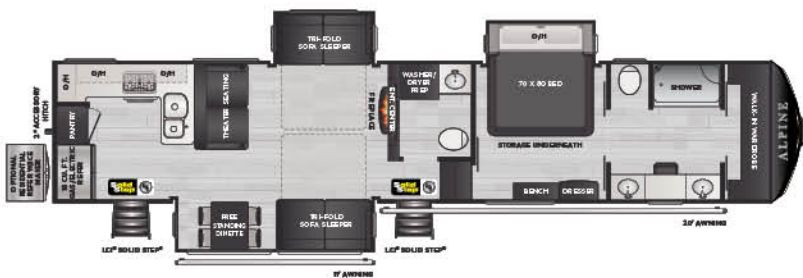
3712KB | Front living, walk-in pantry, master suite



**NEW!** 3790FK | Front kitchen, four slides, master suite



3850RD | Rear den, five slides, oversized storage tray



**NEW!** 3910RK | Rear kitchen, 1 1/2 bath, front bath master suite

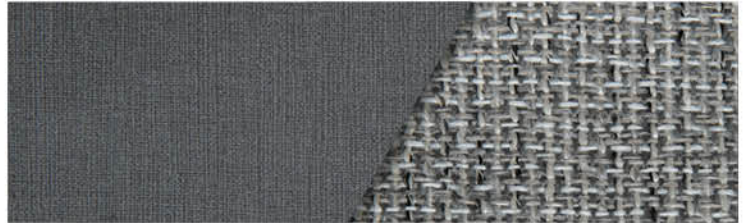
MODEL	WEIGHT	CARRYING CAPACITY	HITCH WEIGHT	FRESH WATER	WASTE WATER	GRAY WATER	LPG	LENGTH*	WIDTH	HEIGHT	AWNING
3220RL	12500	3000	2470	54	49	83	60	36' 10"	8' 4"	13' 3'	17'/11'
3650RL	12713	2787	2675	54	49	83	60	38' 8"	8' 4"	13' 4"	19'/11'
3700FL	13944	2556	2775	54	78	78	60	41' 6"	8' 4"	13' 4"	14'/14'
3712KB	14013	2487	2810	54	44	78	60	41' 6"	8' 4"	13' 4"	14'/14'
3790FK	13508	2992	2620	54	44	88	60	41' 6"	8' 4"	13' 4"	14'14'
3850RD	13972	2528	2745	54	49	83	60	41' 5"	8' 4"	13' 4"	17'
3910RK	13517	2983	2780	54	83	83	60	43' 0"	8' 4"	13' 3"	20'/11'

DISCLAIMER: Product information is as accurate as possible as of the date of publication of this brochure. All features, floor plans, and specifications in this brochure are subject to change without notice. Please also consult Keystone's web site at [www.keystonerv.com](http://www.keystonerv.com) for more current product information and specifications. Tow Vehicle Disclaimer. CAUTION: Owners of Keystone recreational vehicles are solely responsible for the selection and proper use of tow vehicles. All customers should consult with a motor vehicle manufacturer or their dealer concerning the purchase and use of suitable tow vehicles for Keystone products. Keystone disclaims any liability or damages suffered as a result of the selection, operation, use or misuse of a tow vehicle. KEYSTONE'S LIMITED WARRANTY DOES NOT COVER DAMAGE TO THE RECREATIONAL VEHICLE OR THE TOW VEHICLE AS A RESULT OF THE SELECTION, OPERATION, USE OR MISUSE OF THE TOW VEHICLE. \*Length is defined as the distance from the centerline of hitch pin/coupler to rear bumper of trailer. Please review owner's manual prior to purchase for more information on service warranties, extended use, towing and maintenance. Owner's manuals can be found at [keystonerv.com](http://keystonerv.com).

### DÉCOR OPTIONS



STANTON



EASTON



more product detail at  
[www.keystonerv.com/Alpine](http://www.keystonerv.com/Alpine)

**EXTERIOR**

Rear 2" accessory hitch w/ 300 lb. capacity
Road Armor™ shock absorbing hitch pin
Solar prep
Rear observation and side camera prep
G-rated tires
Heavy duty 7,000 lb. Axles w/never-adjust brakes
12" beams with z-frame technology
"No sweat" vented attic system
50 AMP service with electric power cord reel
Hydraulic selector valves for slide-outs
6-point hydraulic level up system
Rear ladder w/fully walkable roof
One-touch electric awning package with adjustable arms
Tinted 80% frameless safety glass windows
MaxTurn Technology™ high-gloss fiberglass front cap w/Hitch Vision™ backup mirror
Class "A" style dual latch "slam" baggage doors
Super-size 6' 4" tall, 30" wide entry door
One-piece polypropylene underbelly
Dual-pane windows (optional)
5500 LP generator (optional)
Generator prep (optional)
Black Diamond full body paint (optional)
Champaign full body paint (optional)
<b>ALL-IN-ONE WATER WORKS EXTERIOR UTILITY CENTER</b>
KeyTV™ multisource TV control system
Easy-siphon winterization system
Water heater bypass
Enclosed low point drain valves
Ducted heat for cold weather protection
Black tank spray hookup
<b>SUSPENSION</b>
Improved impact absorption
Road Armor™ Suspension
Greasable wet bolts (8)
Long-lasting 1/2" steel shackles plates
Long-lasting bronze bushings
<b>INTERIOR</b>
Tri-fold sleeper sofa
4 high-back dinette chairs
Extra tall 6'10" main slide height
MCD® day/night roller shades

**INTERIOR (CONTINUED)**

Ceiling fan
Electric roof vent (kitchen)
LP leak detector
Translucent glass shower enclosure w/massaging shower head
Shower skylight
Porcelain toilet
Single-level master bedroom suite
70" x 80" pillow top king bed mattress
Cross ventilation bedroom windows (where available)
Quilted bedspread and pillows
Samsung residential refrigerator
<b>PACKAGES</b>
<b>UPGRADED APPLIANCE</b>
Furrion® RV Chef Collection kitchen
30" convection oven/microwave
On-demand water heater
35,000 BTU furnace
Central vacuum system
<b>DELUXE SOLID SURFACE</b>
Solid surface countertops
Solid surface sink cover
Stainless steel, extra deep sink with dual bowls
High-rise, single-lever kitchen faucet with sprayer
Maximized kitchen storage w/more drawers and pantry space
<b>SUPER CINEMA</b>
50" LED TV
Jensen® sound system
Outside speakers
<b>NORTH FACE INSULATED</b>
Triple insulated
Heated basement
Double insulated laminated rear wall
Heat ducting to wrapped tanks w/12 volt heat pads
Heated "water works" area
<b>WHISPER AIR HVAC SYSTEMS</b>
15,000 BTU air conditioner with cold air return vents (2)
iN-Command® HVAC system control w/ Global Connect technology
(1) 16,500 BTU heat pump
Fully programmable dual zone temperature control

# BUILT FOR THE LONG HAUL



## 1 EASIER SHOPPING.

At Keystone, we make choosing an RV as easy as finding the Big Dipper on a dark summer night. With comprehensive online product information, Key Connect™ product advisors, and an unparalleled dealer network, we will help you select the perfect RV for your family's adventure.

## 2 INNOVATIVE THINKING.

The road's a nicer place when you have the industry's smartest features behind you. Keystone leads the pack in patented innovations that make our RVs safer, more comfortable, and easier to operate.

## 3 LONG HAUL QUALITY.

To keep you on the road, there are certain things we just won't build a Keystone RV without. Game-changing features like our Unified Wiring Standard, Tru-Fit™ five-point slide construction, and no-fail Tuf-Lok™ A/C duct joiners combined with exhaustive testing and inspections are some of the reasons why Keystone is able to offer our owners the industry's best 3-year limited structural warranty.

## 4 WORRY-FREE CUSTOMER SERVICE.

Wherever the road takes you, you're never too far from an authorized Keystone service center. We also offer live service assistance, ultra-fast parts shipping, online maintenance tips and tricks, and a single-point warranty claims policy. *That's* peace of mind.

## 5 KEYSTONE NATION.

When you choose Keystone, you become a part of one of the largest camping families in the country. We're Keystone Nation. A friendly community where people share photos, travel tips and amazing stories — all in the spirit of camaraderie and adventure. Come join us.