

Luxury Fifth Wheel | 2018

North Point



**2**  
YEAR  
WARRANTY



## Our Wings Get You There

Family fun happens when you spread your wings. Thanks to Jayco's amenity-packed floorplans, rock-solid construction and two full camping seasons of warranty coverage, you can. Greater peace of mind and added comfort mean better memories and lasting bonds. So go ahead. Hit the road—and let the good times fly.

## Generations of Family Fun



361RSFS INTERIOR

# NORTH POINT™

### LEGENDARY LUXURY

An unmatched track record of innovation and evolution continues with the 2018 North Point. Brimming with new design elements and upgraded fixtures—big and small—and equipped with high-performance travel gear, North Point demands attention and delivers big on comfort.

# TRAVEL IN STYLE

Premium features come standard as part of the North Point Luxury Package. This luxury fifth wheel is the perfect companion for the camper that knows what they like.

## North Point Luxury Package:

- MORryde® StepAbove™ entrance steps (1)
- 6-point electric auto-leveling system (2)
- Jayco Luxury Sleep System with 80-inch Simmons® residential foam-top mattress (3)
- Electric, thermostat-controlled fireplace (4)
- Indoor/outdoor central vacuum system with kick pan (5)
- Magnum Truss™ XL6 Roof System (6)
- Full-Timer Kitchen Storage System (7)
- OneControl Digital Command System for levelers, slideouts and exterior lights (8)

## 12-inch Magnum Frame System (9)

- HELIX Cooling System: Jayco-exclusive duct design, exterior-mounted A/C units, directional/closable A/C vents, and larger return air vents with user accessible filters (10)
- Bedroom 15,000-BTU A/C
- Backup camera/monitoring system prep
- Carefree® power awning with LED light strip
- Bluetooth®/HDMI® high-output entertainment system
- Washer/dryer prep
- Oversized battery compartment
- Fully painted and clear-coated front cap

## Power kitchen vent with wall controls and rain sensor

- Sidewall- and roof-mounted solar prep
- Whole-coach water purification system
- Big-screen LED HDTVs in living areas
- 32-inch LED HDTV in bedroom
- High-gloss, hand-rubbed, Maple hardwood cabinet doors
- High-gloss, premium fiberglass exterior
- Single-roller blackout shades throughout
- LED exterior lighting



1



2



3



4



5



6



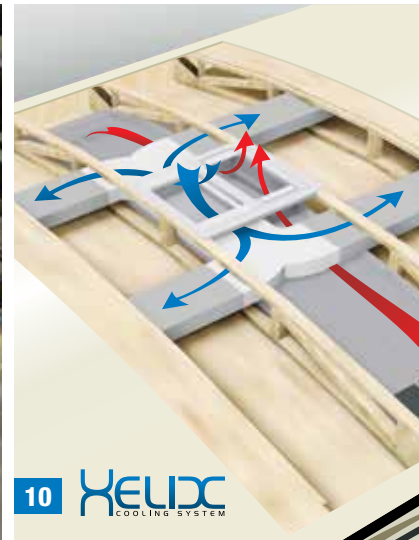
7



8



9



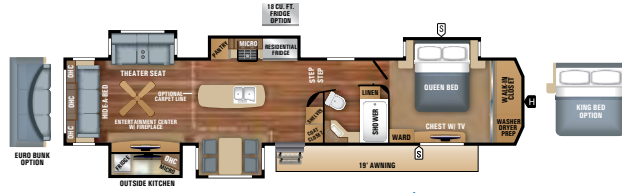
10

**HELIX**  
COOLING SYSTEM

# FLOORPLANS



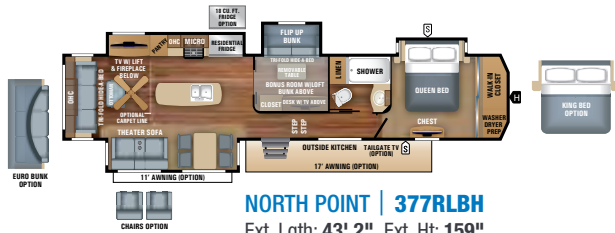
**NORTH POINT | 315RLTS**  
Ext. Lgth: 38' 9" Ext. Ht: 159"  
Unloaded Wt. (lbs): 12,405 Sleeps: 4



**NORTH POINT | 361RSFS**  
Ext. Lgth: 43' 7" Ext. Ht: 158"  
Unloaded Wt. (lbs): 13,590 Sleeps: 4



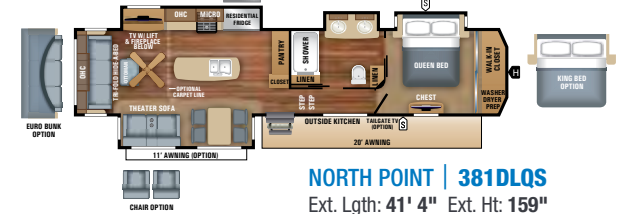
**NORTH POINT | 375BHFS**  
Ext. Lgth: 43' 3" Ext. Ht: 161"  
Unloaded Wt. (lbs): 14,125 Sleeps: 9-11



**NORTH POINT | 377RLBH**  
Ext. Lgth: 43' 2" Ext. Ht: 159"  
Unloaded Wt. (lbs): 13,855 Sleeps: 9



**NORTH POINT | 379DBFS**  
Ext. Lgth: 43' 6" Ext. Ht: 161"  
Unloaded Wt. (lbs): 14,200 Sleeps: 8-10



**NORTH POINT | 381DLQS**  
Ext. Lgth: 41' 4" Ext. Ht: 159"  
Unloaded Wt. (lbs): 13,240 Sleeps: 4



**NORTH POINT | 381FLWS**  
Ext. Lgth: 43' 6" Ext. Ht: 161"  
Unloaded Wt. (lbs): 13,920 Sleeps: 6



**NORTH POINT | 385THWS**  
Ext. Lgth: TBD Ext. Ht: TBD  
Unloaded Wt. (lbs): TBD Sleeps: 6



**NORTH POINT | 387RDFS**  
Ext. Lgth: 43' 6" Ext. Ht: 161"  
Unloaded Wt. (lbs): 13,560 Sleeps: 6

# SPECS

MODELS	DIMENSIONS						WEIGHT (LBS.)				TANKS (GALS.)		
	FLOORPLAN	TOTAL EXTERIOR LENGTH	EXTERIOR TRAVEL LENGTH*	EXTERIOR WIDTH	EXTERIOR HEIGHT (WITH A/C)	EXTERIOR HEIGHT (WITH OPT. BEDROOM A/C)	INTERIOR HEIGHT (UPPER DECK)	UNLOADED VEHICLE WEIGHT	DRY HITCH WEIGHT	GROSS VEHICLE WEIGHT RATING	CARGO CARRYING CAPACITY	FRESH WATER CAPACITY (INCLUDES WATER HEATER)	GREY WASTE WATER CAPACITY
315RLTS	38' 9"	37' 4"	96"	159"	160"	82"	12,405	2,655	15,250	2,845	75	87	50
361RSFS	43' 7"	42' 3"	96"	158"	160"	82"	13,590	2,785	16,500	2,910	75	87	50
375BHFS	43' 3"	41' 10"	96"	161"	161"	82"	14,125	2,880	16,500	2,375	75	93.5	94
377RLBH	43' 2"	41' 8"	96"	159"	161"	82"	13,855	2,820	16,750	2,895	75	87	50
379DBFS	43' 6"	42' 0"	96"	161"	161"	82"	14,200	2,735	16,995	2,795	75	137	100
381DLQS	41' 4"	40' 10"	96"	159"	161"	82"	13,240	2,875	16,500	3,260	75	87	50
381FLWS	43' 6"	42' 0"	96"	161"	161"	82"	13,920	2,805	16,750	2,830	75	74	37
385THWS	TBD	TBD	96"	TBD	TBD	82"	TBD	TBD	TBD	TBD	TBD	TBD	TBD
387RDFS	43' 6"	42' 1"	96"	161"	161"	82"	13,560	2,795	16,500	2,940	75	87	50

\*Distance from the pin box to the bumper; total exterior length may be longer.

It is important for your safety and enjoyment that your tow vehicle be adequately sized and equipped to tow and handle the GVWR of the RV you select. Review weights and rating of your tow vehicle and consult a competent advisor for questions or advice. Whether you are new to RVing or a veteran, get a feel for the performance of your tow vehicle before heading out on the roadways. When you tow an RV, you must drive differently than when you drive a single vehicle. Practice hooking up, driving, backing up and braking in a safe environment or seek out professional instruction. Jayco affixes a weight label to each RV which lists weight information for that vehicle. See specifications chart to the left.

**Unloaded Vehicle Weight (UJVW):** Sometimes referred to as "Dry Weight," UJVW means the typical weight of this trailer as built at the factory. The UJVW, as used in product literature and other promotional materials, does not include cargo, fresh water, propane, options or dealer-installed accessories.

**Gross Vehicle Weight Rating (GVWR):** GVWR means the maximum permissible weight of the trailer, including the UJVW plus personal items, all cargo, fluids, options and dealer-installed accessories. The GVWR is equal to or greater than the sum of the UJVW and the CCC.

**Cargo Carrying Capacity (CCC):** CCC means the maximum weight of personal items, food, fresh water, propane, tools, other cargo and dealer-installed accessories that can be carried by the trailer. CCC is equal to or less than GVWR minus UJVW. The addition of options will decrease the CCC.

**Hitch Weight (HW):** The hitch weight, as used in product literature and other promotional materials, does not include cargo, fresh water, propane gas, options or dealer-installed accessories. The addition of these types of items will either add to or subtract from the stated hitch weight.

## STANDARDS AND OPTIONS

### NORTH POINT LUXURY PACKAGE (mandatory)

Bedroom 15,000-BTU A/C  
 6-point electric auto-leveling system  
 Backup camera/monitoring system prep  
 Carefree® power awning with LED light strip  
 Indoor/outdoor central vacuum system with kick pan  
 12-inch Magnum Frame System  
 Magnum Truss™ XL6 Roof System  
 HELIX Cooling System: Jayco-exclusive duct design, exterior-mounted A/C units, directional/closable A/C vents, and larger return air vents with user accessible filters  
 MORryde® StepAbove™ entrance steps  
 Bluetooth®/HDMI® high-output entertainment system  
 Washer/dryer prep  
 Electric, thermostat-controlled fireplace  
 LED exterior lighting  
 Oversized battery compartment  
 Fully painted and clear-coated front cap  
 Power kitchen vent with wall controls and rain sensor  
 Sidewall- and roof-mounted solar prep  
 Whole-coach water purification system  
 Full-Timer Kitchen Storage System  
 Big-screen LED HDTVs in living areas  
 32-inch LED HDTV in bedroom  
 High-gloss, hand-rubbed, Maple hardwood cabinet doors  
 High-gloss, premium fiberglass exterior  
 Single-roller blackout shades throughout  
 OneControl Digital Command System for levelers, slideouts and exterior lights  
 Jayco Luxury Sleep System with 80-inch Simmons® residential foam-top mattress

### 5-STAR HANDLING PACKAGE

Dexter® 7,000-pound axles with Nev-R-Adjust® brakes  
 Dexter heavy-duty shackles with wet bolt fasteners and bronze bushings  
 MORryde pin box  
 MORryde CRE3000™ rubberized suspension system  
 16-inch Goodyear® Beast tires

### CUSTOMER VALUE PACKAGE (mandatory)

Bed pillows  
 15,000-BTU Whisper Quiet A/C  
 Arched interior ceiling with 82-inch upper deck interior height  
 Bath skylight  
 Bathroom power vent  
 Bedspread  
 Oversized folding exterior grab handle  
 Frameless G20 dark-tinted windows  
 LED interior lighting  
 Security lights  
 Slam-latch™ baggage doors with strut assist  
 Solid-surface kitchen countertops  
 Keyed-Alike™ exterior doors locking system

### STANDARD EXTERIOR EQUIPMENT

Tuff-Shell™ vacuum-bonded, laminated walls  
 Aerodynamic front cap with LED lighting  
 Seamless composite roof covering  
 Climate Shield™:  
 • Enclosed, insulated, heated underbelly  
 • High-BTU-output furnace (40,000-BTU)  
 • Astro-Foil™ in roof and floors  
 12-inch I-Class™ cambered, structural I-beams  
 Completely enclosed and protected slideout mechanisms  
 30-inch x 72-inch entry door with oversized window  
 Screen door with kick panel  
 Wide-stance front landing gear  
 Exterior kitchen with 32-inch LED TV, sink, refrigerator and cooktop range (361RSFS, 375BHFS, 379DBFS)  
 Exterior kitchenette with refrigerator and cooktop range (377RLBH, 381DLQS)  
 Enclosed, protected basement drop-frame  
 Stor-Galore™ pass-through basement storage  
 Cable TV/110V outlets in basement  
 Exterior marine-grade speakers (2)  
 Convenient dual propane compartment (60-pound capacity) on roadside  
 Doorside compartment framed and vented for third propane bottle  
 Heated, enclosed Uni-Dock™ utility center

50-amp service with detachable power cord  
 40,000-BTU furnace (minimum)  
 75-gallon fresh water tank  
 70-gallon grey tank capacity (minimum)  
 44-gallon black tank capacity (minimum)  
 Cable/satellite TV prep  
 No-crank digital HDTV antenna  
 Under-mounted spare tire  
 Outside grill prep  
 Roof ladder  
 Hitch light  
 All exterior lighting is LED  
 EZ-Cord™ cargo area extension cord access port

### STANDARD INTERIOR EQUIPMENT

Raised-panel cabinetry with screwed construction and hidden hinges  
 Soft-close, steel ball-bearing drawer guides, 75-pound capacity, full extension  
 Hardwood slideout fascia with LED lighting in main living/kitchen areas  
 Large, split, under-mount stainless steel sink with sink cover, cutting board and drying rack  
 High-rise pullout kitchen faucet with sprayer  
 Water heater bypass  
 21-cubic-foot residential refrigerator with water/ice in door  
 1,200-watt inverter (n/a with 18-cubic-foot refrigerator option)  
 Furrion® Executive Chef gas cooktop with built-in wall oven  
 Stainless steel, 30-inch, residential, over-the-range microwave  
 USB charging centers in living areas, kitchen and bedrooms  
 Residential-grade vinyl flooring  
 Shaw® R2X® stain-resistant residential carpeting  
 Freestanding table with dinette chairs (2) and folding chairs (2) (optional in 375BHFS)  
 90-amp power center with Charge Wizard®  
 Command center for switches  
 Floor-level convenience light switch for safe entry  
 Nightlight toe kick lighting in bedroom, bathroom and kitchen  
 Ceiling fan (n/a in 381FLWS, 387RDFS)  
 Kitchen ceiling mantle  
 Closeable and directional A/C vents  
 Prep for third A/C (381FLWS, 387RDFS)  
 Tri-fold hide-a-bed sofas with ottoman  
 Seamless bathroom countertops

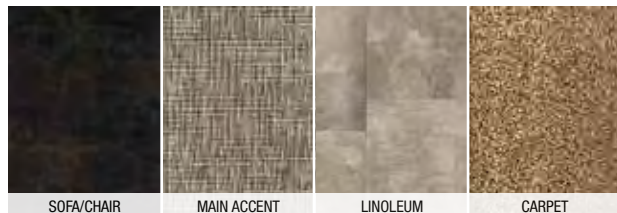
Powered reclining theater seat with heat and massage (n/a in 375BHFS, 379DBFS)  
 Recliners (2) (375BHFS)  
 One-piece, fiberglass shower with glass doors  
 Porcelain bath stool with foot flush  
 Utility hooks in bathroom  
 Full-trunk, under-bed storage  
 Walk-in-style front closet with dual hanging rods  
 Washer/dryer prep (accommodates stackable unit)  
 Oversized bedroom dresser storage  
 Bedroom slide fascia built-in nightstand storage system (n/a in 381FLWS)

### OPTIONS

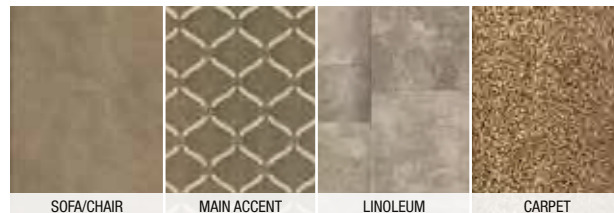
Customer Value Package with heat pump  
 King bed (n/a in 375BHFS)  
 Bunk beds with trundle bed in off-door bunkroom slide (375BHFS)  
 Bunk beds with hide-a-bed in off-door bunkroom slide (375BHFS; std. in 377RLBH)  
 Stainless steel convection microwave with oven  
 Carpet in living area (n/a in 375BHFS, 379DBFS)  
 Freestanding table with dinette chairs (2) and folding chairs (2) (375BHFS, 379DBFS)  
 Recliner rockers (2) in lieu of theater seats (377RLBH, 381DLQS)  
 18-cubic-foot gas/electric refrigerator with ice maker  
 Wireless backup camera/monitoring system  
 32-inch tailgate TV (n/a on 361RSFS, 375BHFS, 379DBFS)  
 Third 15,000-BTU A/C (low-profile) in living room (381FLWS, 387RDFS)  
 Generator prep  
 5,500-watt generator  
 Dual-pane, tinted, safety-glass windows  
 Second power awning (n/a on 361RSFS, 375BHFS, 379DBFS, 381FLWS)  
 Slideout awnings (3) (315RLTS)  
 Slideout awnings (4) (377RLBH, 379DBFS, 381DLQS)  
 Slideout awnings (5) (361RSFS, 375BHFS, 381FLWS, 387RDFS)  
 Outside gas grill  
 On-demand tankless water heater system  
 Sani-Con® Turbo waste management system  
 2-inch cargo accessory receiver (n/a on 385THWS)  
 Euro-bunk (315RLTS, 361RSFS, 377RLBH, 381DLQS)

## INTERIOR DÉCOR

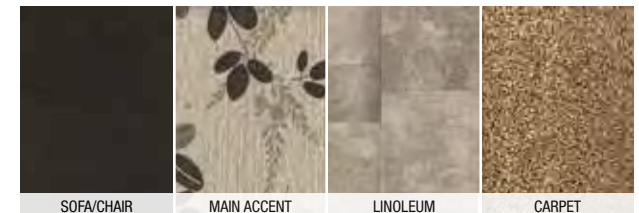
### ESPRESSO



### LATTE



### CASHMERE





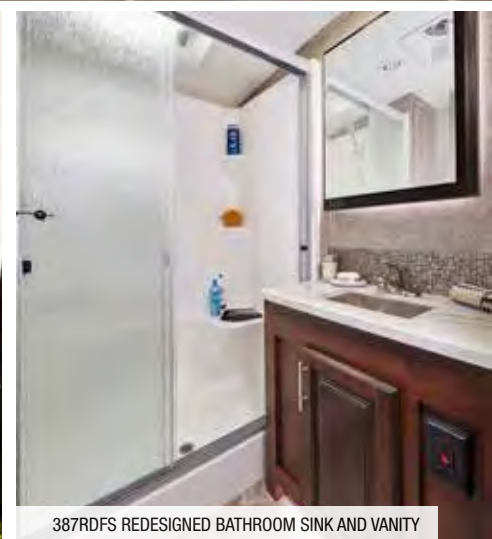
387RDFS RAISED REAR LIVING ROOM | CASHMERE INTERIOR



387RDFS BEDROOM



387RDFS DOORSIDE BASEMENT STORAGE



387RDFS REDESIGNED BATHROOM SINK AND VANITY

## 5-Star Handling Package—an unmatched towing experience

- **Dexter® 7,000-pound axles with Nev-R-Adjust® self-adjusting brakes (1)** – the benchmark of the trailer industry
- **Dexter heavy-duty shackles with wet bolt fasteners and bronze bushings (2)** – resist the wear and tear of towing
- **MORryde® pin box (3)** – allows pin box to travel forward and backward as well as side to side, creating a smoother tow
- **MORryde CRE3000™ suspension (4)** – 3 inches of vertical travel to better absorb and isolate road shock
- **Goodyear® Beast tires (5)** – patented Durawall® Technology and the highest speed rating in the industry





## CLIMATE SHIELD

Extend your camping season with the Jayco Climate Shield™. It protects against extreme heat and extreme freezing—even in temperatures as high as 100 degrees or as low as zero degrees (Fahrenheit).\*

\*Jayco tested fifth wheels in zero degrees F and 100 degrees F weather over an extended period of time in a controlled environment, and all functions of the coach were fully operational. Testing was done in a completely controlled environment; therefore, temperatures during testing may not represent actual temperatures in nature and cannot account for elements such as wind or moisture. In actual use, unit may not perform as well. Supplier of cooling components does not guarantee anything better than 20 degrees difference from ambient temperature. In addition, outside components are subject to freezing and require steps to properly insulate. Jayco's limited warranty does not cover damage caused by freezing. To learn more about Climate Shield and testing done by Jayco, visit [www.jayco.com](http://www.jayco.com).

## THE JAYCO DIFFERENCE

1. **16-inch Goodyear® Beast tires** with the highest speed rating in the industry
2. **Dexter® 7,000-pound axles** with wet bolt fasteners and heavy-duty shackles
3. **Vacuum-bonded walls and high-gloss, premium fiberglass exteriors** for better protection from the elements
4. **Magnum Truss™ XL6 Roof System** withstands 4,500 pounds—50 percent more than other roofs

5. **Welded aluminum frame** for a durable, lightweight structure
6. **Double layer of fiberglass insulation** behind the front cap, plus Flexfoil® and fiberglass insulation in the floor to provide extra warmth where it's needed most—in the bedroom
7. **Painted gelcoat fiberglass front cap** withstands the rigors of the road with infused paint and gelcoating, plus ¼-inch plywood bracing for additional support—not typically found on competing fifth wheels
8. **MORryde® CRE3000™ rubberized suspension system** provides smoother towing and better protection from damaging road shock
9. **HELIX Cooling System with Whisper Quiet technology**
10. **6-point electric auto-leveling system**
11. **Carefree® power awning** with LED light strip
12. **MORryde StepAbove™ entrance steps**
13. **Cargo accessory receiver (n/a on 385THWS)**
14. **Sidewall- and roof-mounted solar prep**
15. **Magnum Frame System**
16. **MORryde pin box**

### JAYCO'S ROOF VS OTHER ROOFS



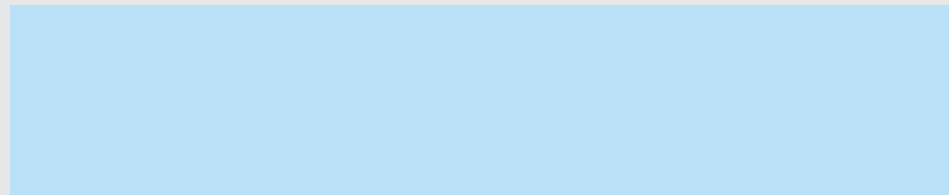
4,500 POUNDS ON A JAYCO ROOF VS. OTHER ROOFS

**THE MAGNUM TRUSS XL6 ROOF SYSTEM**  
**50 percent stronger**



Generations of family fun.

### Meet your Jayco Dealer



We work hard—so you can play hard. From finding the perfect Jayco for your family to providing flexible financing options and full-service support, we're here to help.

### Follow Jayco



Jayco, Inc. | P.O. Box 460 | Middlebury, IN 46540



See dealer for further information and prices.

All information in this brochure and on [www.jayco.com](http://www.jayco.com) is the latest available at the time of publication approval. Jayco reserves the right to make changes and to discontinue models without notice or obligation. Photography may show optional equipment or props used for decoration purposes only. RVs built for sale in Canada may differ to conform to Canadian codes. JAYCO and the JAYCO BIRD IN FLIGHT are registered trademarks of Jayco, Inc. Printed in USA 20K 10/17 ©2017 Jayco, Inc. 274779-1

### Travel with Confidence



At Jayco, we build our RVs to handle every adventure, then back them with our industry-leading 2-year limited warranty. We, with support from our select partners, have you covered for **2 camping seasons**. That's **730 days**. You won't find a better warranty in the business, because the only strings we attach are those that deliver the ultimate in reliability. That's the Jayco difference. So go explore. For a copy of our 2-year limited warranty with complete terms and conditions, please contact your local Jayco dealer.



MADE IN USA



Featuring Durawall® Technology—ENGINEERED to help you tow with confidence



North Point is now equipped with Dexter axles and self-adjusting brakes



Jayco's long-term commitment to generations of family fun

After six years of increased efforts to eliminate waste, conserve energy and increase recycling, we've come a long way in building RVs that are not only better for your family—but also better for the planet.

Learn more at [Jayco.com/EcoAdvantage](http://Jayco.com/EcoAdvantage)