



*Arctic Fox*

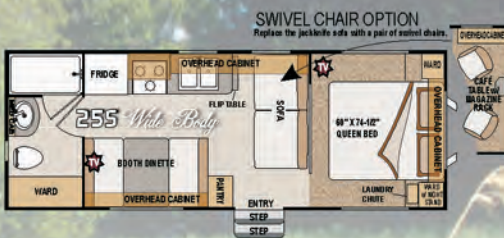


*The Original*



# Aretic Fox

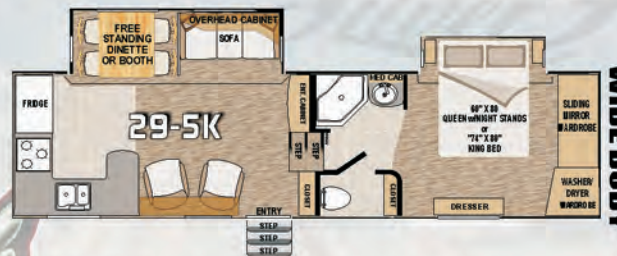
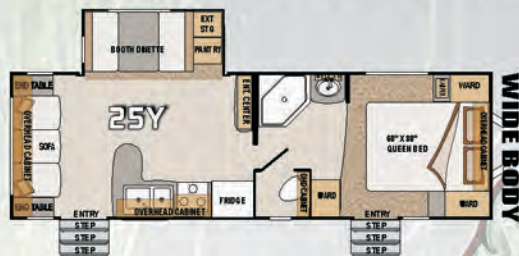
## SIT & SLEEP OPTION







## Exciting New Additions to the Arctic Fox Lineup



### Arctic Fox 25Y

- Aluminum Frame Construction
- Front Fiberglass Cap
- R-18 Fiberglass plus...  
...R-15 Astro Foil in the Roof
- Certified Chassis w/ HD Suspension
- Heated and Enclosed Tanks
- Wide Body Construction
- Kitchen Skylight w/ Shade
- New Convenience Headboard
- Interior Command Center
- Privacy Tint Windows w/Night Shade

### Arctic Fox 29 5K Silver Fox Edition

- Grey Fiberglass Front Cap w/ Turning Radius
- Exterior Convenience Center
- Certified Stor More Chassis
- Slam Latch, 1' Thick, Luggage Doors
- Keyless Entry Door
- Wide Body Construction
- E-Stone hard surface counter tops
- 6'6" Main floor Slideouts
- Tru-Rest Memory Foam Mattress
- Ultra Deck Sleep System
- Antique Finished Cabinetry

### Arctic Fox 32 5M Silver Fox Edition

- Grey Fiberglass Front Cap w/ Turning Radius
- Exterior Convenience Center
- Certified Stor More Chassis
- Slam Latch, 1' Thick, Luggage Doors
- Keyless Entry Door
- Wide Body Construction
- E-Stone hard surface counter tops
- 6'6" Main floor Slideouts
- Tru-Rest Memory Foam Mattress
- Ultra Deck Sleep System
- Antique Finished Cabinetry

### SIT & SLEEP SOFA/BED OPTION

*Easy as 1-2-3...*



Sit & Sleep sofa folds down and a full 60"x80" queen mattress folds over!

# Silver Fox Edition



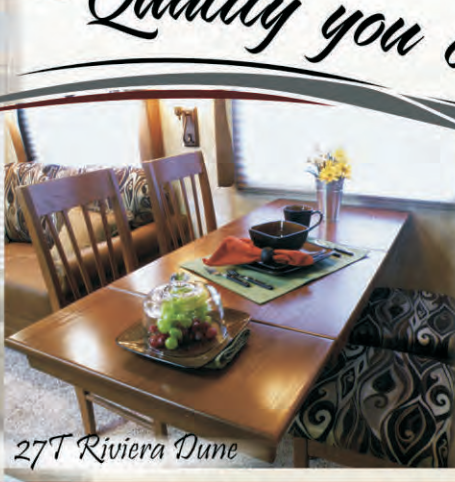


# Arctic Fox

"Quality you can see."



32-5M-Royal Estate



27T-Riviera Dune



27-5L

### Arctic Fox - Standard Features

Laminated Aluminum Frame Construction  
 Fiberglass Front Cap w/Integrated LPG Tank Cover  
 4 Season All Weather Package  
 Front Security/Convenience Lights  
 R-15 Astro Foil in Slideout Floors  
 R-15 Astro Foil in Full Length Floor  
 R-18 Roof Insulation (plus R-15 Astrofoil)  
 Flat Screen LCD TV and Digital TV Antenna  
 Care Free Travel'R 12 Volt Power Awning  
 AM/FM-CD/DVD Player with Interior and Exterior Speakers  
 Aluminum Wheels  
 Deep Tint Windows  
 Decorative Wall Clock

Shock Absorbers on All Four Wheels  
 Stabilizing Jacks  
 Roof Rack and Ladder  
 Solid Wood Drawer and Door Fronts  
 Deluxe Slideout Flange Treatment  
 Upgraded Interior Fabrics and Styling  
 Residential Style Furniture  
 Bronze Décor Light Fixtures  
 Pleated Privacy/Night Shades  
 Fantastic Fan  
 Galley Skylight with Shade  
 Porcelain Marine Toilet w/ Foot Pedal  
 Bath Skylight

Retractable Shower Screen or Glass Enclosure

Tru-Rest Memory Foam Mattress  
 Designer Bedsread with Pillow Shams  
 Digital TV Antenna  
 Galley Fluorescent Light  
 Park TV Cable Jack  
 Pre-Wired for Satellite and Solar Panel  
 Microwave Oven  
 Large Exterior Entry Assist Handle  
 LED Running and Tail Lights  
 12 Volt Disconnect Switch  
 Interior Command Center  
 Beauflor Durable Floor Covering  
 Cargo Netting inside Wardrobe

### Silver Fox Edition -Additional Enhancements

Grey Front Cap with Integrated LPG Tank Cover  
 Antique Glazed Kitchen Cabinetry  
 E-Stone Hard Surface Counter Tops  
 Slam Latch Luggage Doors  
 Keyless Entry  
 Telescoping Lighted Vanity Mirror  
 Decorative Iron Décor Items  
 Custom Designer Back Splash  
 Bedroom Starlight with Shade

12 Volt Power Jack  
 Chassis Mount Spare Tire Carrier  
 Variable Recessed Halogen Light  
 Low Profile Fluorescent Lights  
 Ozite Ceiling Liner  
 16" Aluminum Wheels  
 Molded Rear Fiberglass Cap  
 8 Cubic Foot Refer  
 10 Gal. DSI Water Heater

### 5th Wheel Exclusives

Grey Front Cap with Turning Radius  
 Wide Body Construction  
 Certified Store More Chassis  
 6"6" Slideout Height on 30 Foot & Larger  
 Ultra Deck Sleep System  
 Exterior Convenience Center  
 Generator Ready



### Arctic Fox Travel Trailers

#### Arctic Fox Aluminum Super Structure

| Description                             | 22G    | 22H    | 25P    | 25R   | 25S    | 25Y    | 26X   | 27T   | 29L   | 30U   |
|-----------------------------------------|--------|--------|--------|-------|--------|--------|-------|-------|-------|-------|
| Model Number                            | 4500   | 4455   | 5900   | 5835  | 4690   | 6265   | 6200  | 6325  | 7205  | 7075  |
| Dry Axle Weight (approx. Lbs.)          | 550    | 595    | 860    | 650   | 570    | 785    | 1000  | 900   | 1060  | 1065  |
| Dry Hitch Weight (approx. Lbs.)         | 2450   | 2450   | 3240   | 3515  | 2740   | 3735   | 3200  | 3175  | 2135  | 2260  |
| Net Carrying Capacity                   | 5050   | 5050   | 6760   | 6485  | 5260   | 7050   | 7200  | 7225  | 8265  | 8140  |
| Gross Dry Weight-lbs (approx. Lbs.)     | 7500   | 7500   | 10000  | 10000 | 8000   | 10000  | 10400 | 10400 | 10400 | 10400 |
| Gross Vehicle Weight Rating (GVWR)-Lbs. | 23'10" | 23'10" | 27'1"  | 27'3" | 26'11" | 30'    | 28'5" | 29'8" | 32'   | 32'4" |
| Exterior Length (approx. w/hitch)       | 10'3"  | 10'2"  | 10'11" | 10'8" | 10'3"  | 10'11" | 11'2" | 11'2" | 11'3" | 11'3" |
| Exterior Height (approx. incl. AC unit) | 8'6"   | 8'6"   | 8'6"   | 8'6"  | 8'6"   | 8'6"   | 8'    | 8'    | 8'    | 8'    |
| Exterior Width (approx. w/o awning)     | ST205  | ST205  | ST225  | ST225 | ST205  | ST225  | ST235 | ST235 | ST235 | ST235 |
| Tire Size                               | 75R15  | 75R15  | 75R15  | 75R15 | 75R15  | 75R15  | 80R16 | 80R16 | 80R16 | 80R16 |
| Load Range                              | C      | C      | D      | D     | C      | D      | E     | E     | E     | E     |
| Fresh Water Capacity (approx gal)       | 44     | 46     | 50     | 58    | 58     | 47     | 67    | 66    | 67    | 67    |
| Gray Water Tank (approx. gallons)       | 41     | 41     | 40/35  | 41    | 41     | 47     | 30/25 | 54    | 35/25 | 54    |
| Black Water Tank (approx. gallons)      | 35     | 35     | 35     | 35    | 35     | 36     | 44    | 42    | 44    | 42    |
| LPG Capacity (approx. gallons)          | 14     | 14     | 14     | 14    | 14     | 14     | 14    | 14    | 14    | 14    |
| CSA - Canadian Dealers Only             | YES    | YES    | YES    | YES   | YES    | YES    | YES   | YES   | YES   | YES   |
| Auto Ignition Furnace (1,000 BTU's)     | 25     | 25     | 25     | 25    | 25     | 30     | 30    | 30    | 30    | 30    |

#### Arctic Fox Silver Fox Edition / Aluminum Super Structure

| Description                             | 27-5L | 29-5E | 29-5K  | 29-5T | 32-5M  | 32-5S  | 36-5V | 36-5W |
|-----------------------------------------|-------|-------|--------|-------|--------|--------|-------|-------|
| Model Number                            | 7500  | 8140  | TBA    | 7870  | TBA    | 8800   | 10140 | 10140 |
| Dry Axle Weight (approx. Lbs.)          | 1500  | 1660  | TBA    | 1760  | TBA    | 2000   | 2740  | 2740  |
| Dry Hitch Weight (approx. Lbs.)         | 3000  | 2200  | TBA    | 2370  | TBA    | 3200   | 3860  | 3860  |
| Net Carrying Capacity                   | 9000  | 9800  | TBA    | 9630  | TBA    | 10800  | 12880 | 12880 |
| Gross Dry Weight-lbs (approx. Lbs.)     | 12000 | 12000 | TBA    | 12000 | TBA    | 14000  | 16740 | 16740 |
| Gross Vehicle Weight Rating (GVWR)-Lbs. | 28'1" | 31'3" | 33'11" | 31'3" | 34'11" | 32'10" | 38'   | 38'   |
| Exterior Length (approx. w/hitch)       | 12'6" | 13'   | 13'    | 13'   | 13'    | 13'    | 13'   | 13'   |
| Exterior Height (approx. incl. AC unit) | 8'    | 8'    | 8'6"   | 8'    | 8'6"   | 8'     | 8'    | 8'    |
| Exterior Width (approx. w/o awning)     | ST235 | ST235 | ST235  | ST235 | ST235  | ST235  | ST235 | ST235 |
| Tire Size                               | 80R16 | 80R16 | 80R16  | 80R16 | 80R16  | 80R16  | 85R16 | 85R16 |
| Load Range                              | E     | E     | E      | E     | E      | E      | G     | G     |
| Fresh Water Capacity (approx gal)       | 76    | 65    | 82     | 75    | 82     | 66     | 76    | 76    |
| Gray Water Tank (approx. gallons)       | 35/35 | 35/35 | 72/35  | 50    | 72     | 60     | 60    | 60    |
| Black Water Tank (approx. gallons)      | 35    | 35    | 65     | 35    | 65     | 35     | 42    | 42    |
| LPG Capacity (approx. gallons)          | 20    | 20    | 20     | 20    | 20     | 20     | 20    | 20    |
| CSA - Canadian Dealers Only             | YES   | YES   | YES    | YES   | YES    | YES    | YES   | YES   |
| Auto Ignition Furnace (1,000 BTU's)     | 35    | 35    | 35     | 35    | 35     | 35     | 35/20 | 35/20 |