

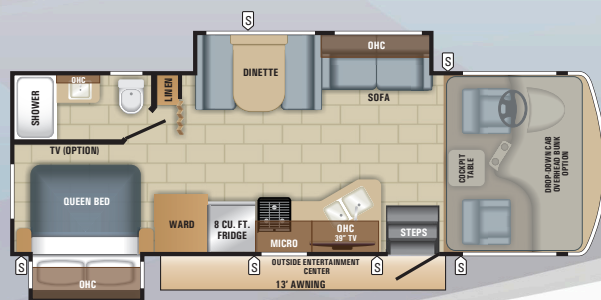
2018

# Atlante

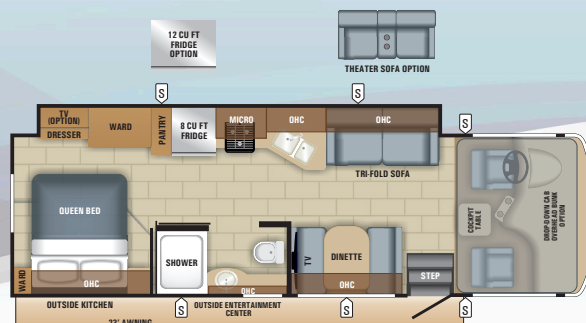
## WHAT'S NEW

- 3 All-new decors: Chambray, Nantucket & Albany
- Jayco-Exclusive Garmin® infotainment system
- Solar prep
- All-new front cap
- Engine cover, eliminating carpet in cab area
- Exterior LED lights
- 2 New floorplans: 29S, 31R

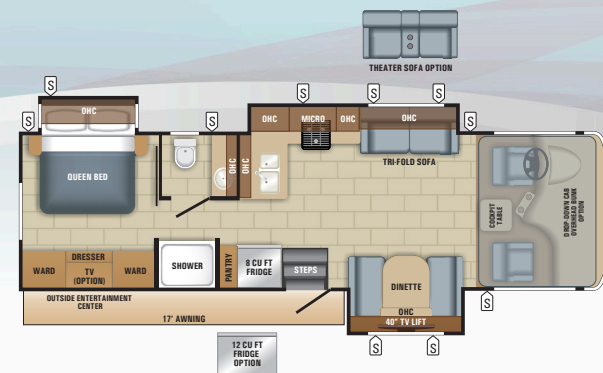
26X



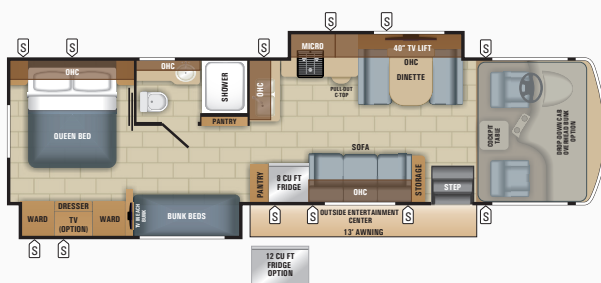
29S



31P



31R



31V



  
**Jayco**  
 Generations of family fun.



# Alante Standards and Options

## CUSTOMER VALUE PACKAGE

Standard JRIDE®: Computer-balanced driveshaft, jounce bumpers, front and rear stabilizer bars, Sachs shocks

Jayco-Exclusive Garmin® infotainment system

Backup and sideview cameras

Electric patio awning with LED lights

Slideout cover awnings

LED living room TV

Roller shades

One-piece fiberglass roof

Exterior entertainment center w/LED TV mounted on swivel bracket & CD/DVD/AM/FM radio & speakers

1,000-watt inverter

Driver/passenger cockpit table

Electric-powered, double-step entry

Lockable pass-through storage compartments with easy-to-use slam-latch doors

12V house battery

12V demand water pump

30-amp electrical service cord

4-inch tube bumper with sewer hose storage

Onan® Marquis Gold Genset 4,000-watt generator

11,000-BTU A/C (2) with Power Management System (N/A 26X)

15,000-BTU A/C (1) (26X only)

Energy Management System

Vinyl graphics

Outside shower

1.6 cu. ft. microwave

8 cu. ft. gas/electric refrigerator

Water filtration system

Seat belts in all seating positions

Auto-ignition, 30,000-BTU ducted furnace

Prep for satellite dish

Cable TV hookup with RG-6 coax & video selector switch

Digital antenna with signal booster

Shower with glass door, skylight and light

Toilet with foot flush

Bathroom powered roof vent with wall switch

Bedroom powered vent (26X)

Full two-toned dash with grey burl accents

6-gallon gas/electric water heater

Linoleum flooring

Queen-size bed with bedspread

Bunk beds (300-pound rating) (31R)

6-speed automatic TorqShift® transmission with overdrive and tow/haul mode

175-amp alternator

56-lb., 16.5-gallon propane tank

12V chassis battery

19.5-inch Goodyear® radial tires

Front and rear disc, four-wheel anti-lock brakes

5,000-lb. rear hitch receiver with dual connector

Seven-pin plug

Six-way power driver seat

LED marker lights

Third brake light

Power front shade

## STANDARD EXTERIOR EQUIPMENT

Automatic hydraulic leveling jacks

White, high-gloss, fiberglass walls

One-piece fiberglass front cap

Frameless windows

Entrance door with industry's largest travel view window

Bead-foam insulation (R-24 max roof, R-9 max floor, R-8 max walls)

## STANDARD INTERIOR EQUIPMENT

Stainless steel sinks in kitchen and bathroom

Large double sink in kitchen

High-intensity recessed LED ceiling lights

Hardwood cabinet doors throughout

Ball-bearing drawer guides

Three-burner range with oven, 9,000-BTU SuperBurner and piezo igniter

## STANDARD DRIVING EQUIPMENT

Ford F53 16,000-lb (26X)/18,000-lb (31P, 31V, 29S)/20,500-lb (31R) GVWR chassis

6.8L Triton V-10 320 HP gas engine with electronic fuel injection and 460 LB-FT torque

## OPTIONS

Canadian Standards

Bedroom LED TV

Drop-down overhead bunk in cab area with 750 lb. capacity

12 cu. ft. gas/electric refrigerator (31P, 31R, 29S)

Theater Seats (N/A 26X, 31R)



Sparkling Sand

**2**  
YEAR  
WARRANTY

## NO ONE OFFERS A BETTER WARRANTY

At Jayco, we build our RVs to handle every adventure, then we back our products with an industry-leading 2-year/24,000 mile limited warranty. You won't find a better warranty in the business because the only strings we attach are those that deliver the ultimate in reliability. That's the Jayco difference. So go explore. We have the warranty that will follow you anywhere.

For a copy of our 2-year limited warranty with full terms and conditions, please contact your local Jayco dealer.



Jayco, Inc., P.O. Box 460, Middlebury, IN 46540, [www.jayco.com](http://www.jayco.com) See dealer for further information and prices. All information in this brochure is the latest available at the time of publication approval. Jayco reserves the right to make changes and to discontinue models without notice or obligation. Photos in this brochure may show optional equipment and props for photography purposes. RVs built for sale in Canada may differ to conform to Canadian codes.  
©2017 Jayco, Inc. Alante flyer 2018.indd EJ 09-17 Printed in U.S.A.

## SPECIFICATIONS

FLOORPLAN	EXTERIOR LENGTH	EXTERIOR WIDTH	EXTERIOR HEIGHT (WITH A/C)	INTERIOR HEIGHT	WHEEL BASE	FRESH WATER CAPACITY (INCLUDES WATER HTR)	GREY WASTE WATER CAPACITY	BLACK WASTE WATER CAPACITY
26X	27' 5"	101"	12' 5"	84"	158	59	40	32
29S	TBD	101"	12' 5"	84"	190	79	40 + 8.5	50
31P	31' 6"	101"	12' 5"	84"	190	79	41	51
31R	34' 10"	101"	12' 5"	84"	228	79	40	50
31V	31' 11"	101"	12' 5"	84"	190	78	40	50

It is important for your safety and enjoyment that you are aware of the weights and tow ratings of the RV you select. Consult a competent advisor for questions or advice. Whether you are new to RVing or a veteran, get a feel for the performance of your RV before heading out on the roadways. When you tow a vehicle with your RV, you must drive differently than when you drive a single vehicle. Practice hooking up, driving, backing up and braking in a safe environment or seek out professional instruction. Jayco affixes a weight label to each RV which lists weight information for that vehicle. Refer to that label to verify the vehicle will meet your requirements. See specifications chart above.

**Gross Vehicle Weight Rating (GVWR):** The maximum permissible weight of the motorhome, including the Unloaded Vehicle Weight (UVW) plus passengers, personal items, all cargo, fluids, options and dealer-installed accessories. The GVWR is equal to or greater than the sum of the UVW and the Cargo Carrying Capacity.

**Gross Combined Weight Rating (GCWR):** The maximum allowable combined weight of the motorhome used as a tow vehicle and the attached towed vehicle.

