

PUMA

Travel Trailers, Fifth Wheels, Park Trailers & Toy Haulers



PUMA

by Palomino



TRAVEL TRAILERS - FIFTH WHEELS - PARK TRAILERS - TOY HAULERS

TRAVEL TRAILERS



▲ MODEL 26 RLSS

[2] SHOWN IN PESTO DECOR WITH BROWN MAPLE GLAZED CABINETRY

TRAVEL TRAILER SPECIFICATIONS

MODELS	18-DB	19-FS	19-RL	20-QB	23-FB	25-BH	25-RS	27FQ	21-RBS	22-KRB	25-RBSS	26-FBSS	26-RKS	26-RLSS
Hitch Dry Weight (lbs.)	527	560	446	663	673	660	600	510	434	460	615	705	635	700
Dry Axle Weight (lbs.)	3784	3710	3802	3476	3985	4090	4430	5509	4392	4679	5542	5460	5422	5470
Total Dry Weight (lbs.)	4311	4270	4248	4139	4658	4750	5030	5800	4826	5139	6157	6165	6057	6170
Carrying Capacity (lbs.)	3178	3252	2735	3486	2552	2872	2532	3141	2145	2271	4580	4662	4275	4652
GVWR (lbs.)	7527	7560	7446	7663	7673	7660	7600	9310	7434	7460	10,775	10,865	10,795	10,860
Tire Size	14"	14"	14"	14"	14"	14"	14"	15"	14"	15"	15"	15"	15"	15"
Interior Height	80"	80"	80"	80"	80"	80"	80"	80"	80"	80"	80"	80"	80"	80"
Exterior Height w/AC	10'5"	10'5"	10'5"	10'5"	10'5"	10'5"	10'5"	10'5"	10'5"	10'5"	10'5"	10'5"	10'5"	10'5"
Exterior Width	96"	96"	96"	96"	96"	96"	96"	96"	96"	96"	96"	96"	96"	96"
Overall Length	23'1"	23'0"	23'0"	23'1"	26'10"	26'4"	28'0"	29'1"	25'4"	26'6"	29'4"	29'9"	29'8"	31'3"
Fresh Water Capacity (gal.)	51	51	51	51	51	51	51	51	51	51	51	51	51	51
Grey Water Capacity (gal.)	42	42	42	42	42	42	42	42	42	42	42	84	84	84
Black Water Capacity (gal.)	42	42	42	32	42	32	42	42	42	32	32	32	42	32
Awning Size	14'	14'	15'	14'	18'	16'	20'	21'	16'	11'	21'	16'	18'	21'

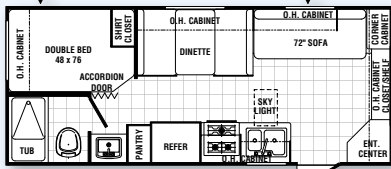
MODELS	27-RBSS	28-BHS	28-KRB	30-DBSS	30-FQSS	30-KDB	30-KFB	30-RKSS	31-KBH	31-BHSS	31-DBSS	31-FKBS	31-RDSS	31-DBTS	32-FKSL
Hitch Dry Weight (lbs.)	810	640	790	843	800	742	1155	977	874	890	812	1,020	623	879	1410
Dry Axle Weight (lbs.)	5774	5160	6206	5832	5870	6317	6975	5977	7000	6812	6900	7,064	6990	7258	6652
Total Dry Weight (lbs.)	6584	6019	6996	6675	6670	7059	8130	6954	7874	7702	8183	8,084	7613	8137	8062
Carrying Capacity (lbs.)	4336	1702	3904	2930	4252	3392	3125	3733	2697	3310	2788	3,058	3120	2852	3698
GVWR (lbs.)	10,970	7640	10,590	9643	10,960	10,902	11,315	11,137	11,034	11,050	10,972	11,180	10,783	11,039	11,810
Tire Size	15"	15"	15"	15"	15"	15"	15"	15"	15"	15"	15"	15"	15"	15"	15"
Interior Height	80"	80"	80"	80"	80"	80"	80"	80"	80"	80"	80"	80"	80"	80"	80"
Exterior Height w/AC	11'1"	10'5"	11'1"	11'1"	11'1"	11'1"	11'1"	11'1"	11'1"	11'1"	11'1"	11'1"	11'1"	11'1"	11'1"
Exterior Width	96"	96"	96"	96"	96"	96"	96"	96"	96"	96"	96"	96"	96"	96"	96"
Overall Length	30'11"	30'6"	31'8"	33'6"	32'9"	33'0"	34'9"	34'0"	35'4"	35'4"	34'10"	35'3"	34'6"	35'8"	36'2"
Fresh Water Capacity (gal.)	51	51	51	51	51	51	51	51	51	51	51	51	51	51	51
Grey Water Capacity (gal.)	84	42	42	42	42	64	84	84	64	42	74	84	42	42	74
Black Water Capacity (gal.)	42	42	42	42	42	32	42	32	42	32	84	32	42	42	42
Awning Size	21'	20'	16'	18'	18'	18'	21'	21'	19'	21'	16'	21'	19'	18'	20'



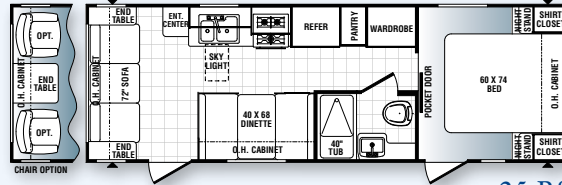
FUN & CAREFREE

When you're on the prowl for adventure, nothing is better suited than a Puma. These powerfully-built, easily towed travel trailers make the adventure fun and carefree. Puma offers 28 floor plan choices including a variety of kids' bunk room models. Satellite TV hook-up is standard on all models to keep everyone entertained.

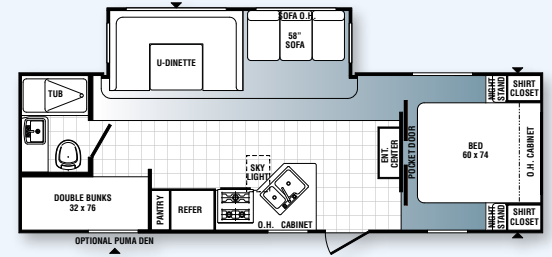
TRAVEL TRAILERS



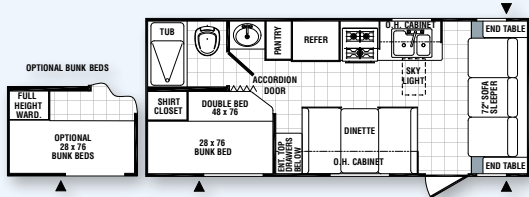
18-DB



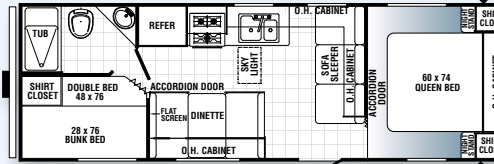
25-RS



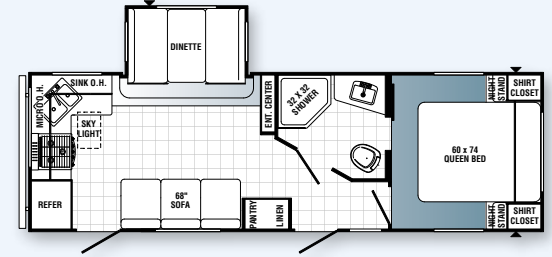
26-FBSS



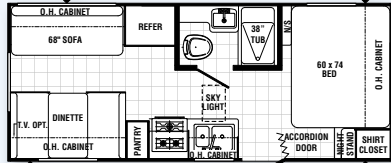
19-FS



27-FQ



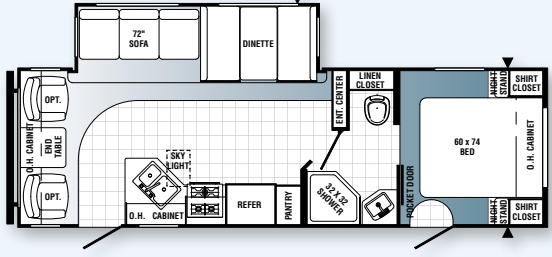
26-RKS



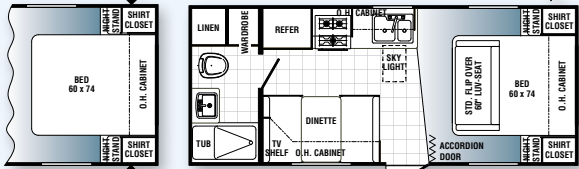
19-RL



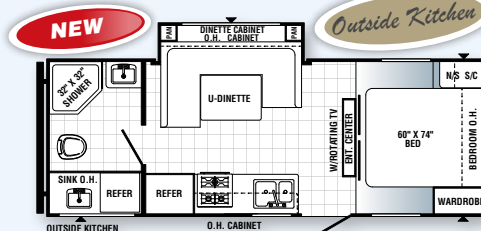
21-RBS



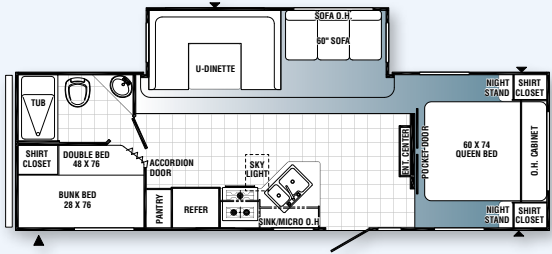
26-RLSS



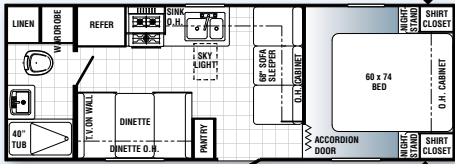
20-QB



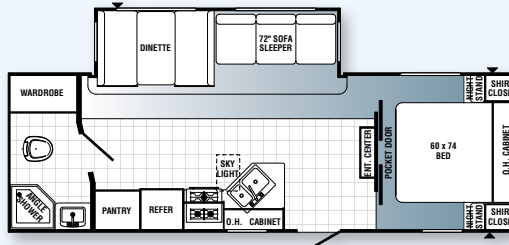
22-KRB



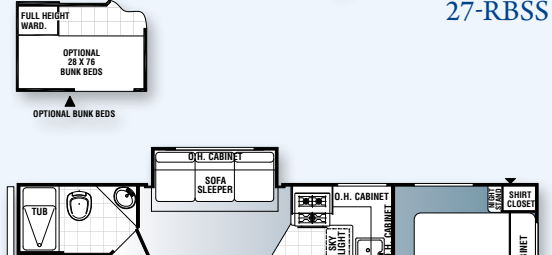
27-RBSS



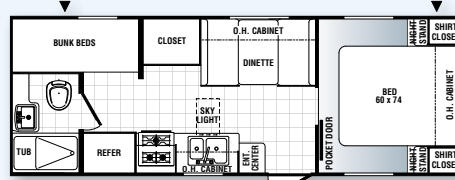
23-FB



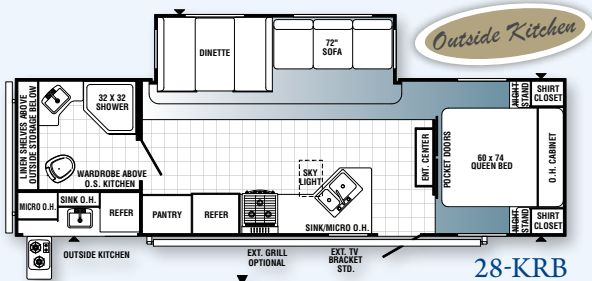
25-RBSS



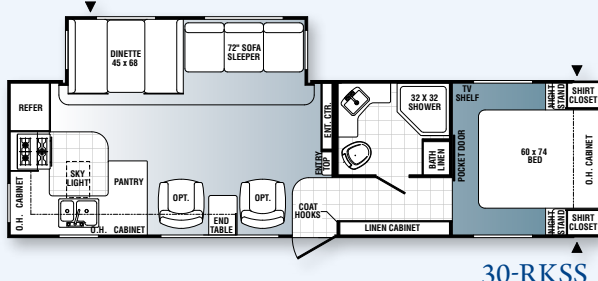
28-BHS



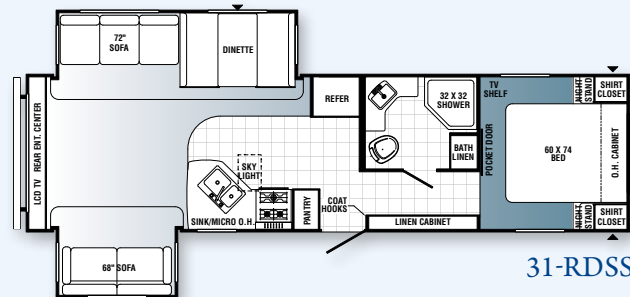
25-BH



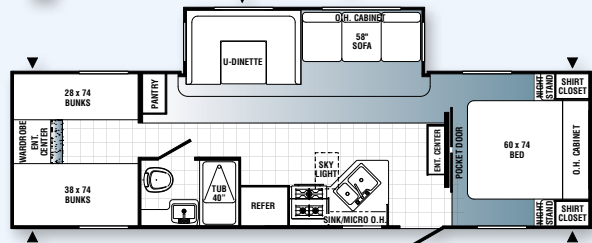
28-KRB



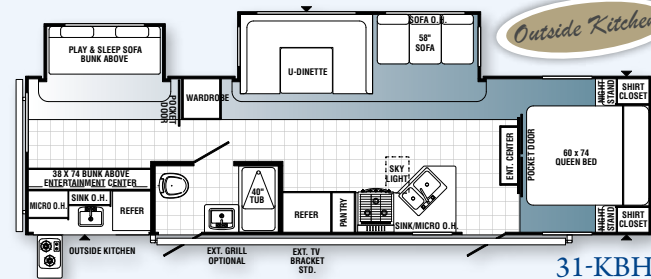
30-RKSS



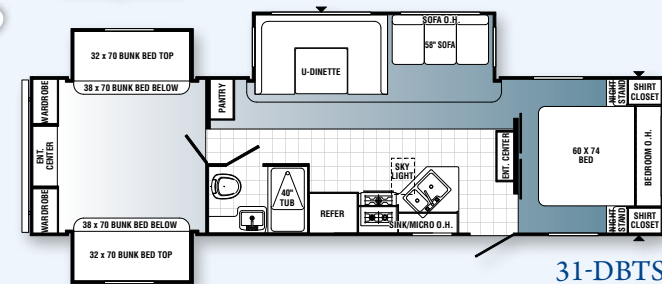
31-RDSS



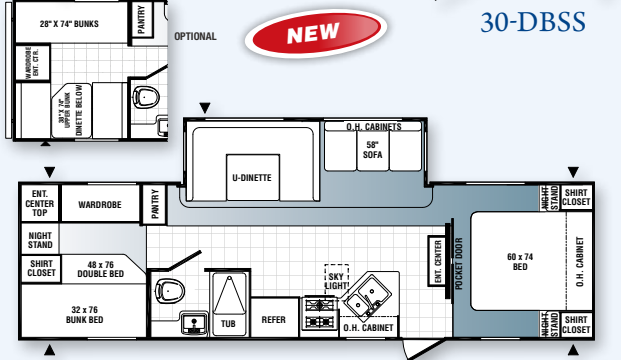
30-DBSS



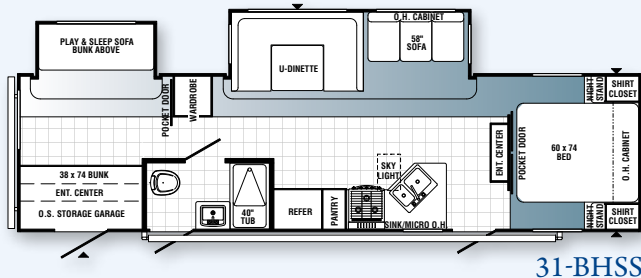
31-KBH



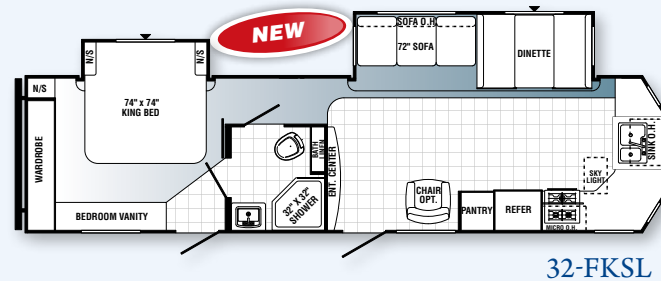
31-DBTS



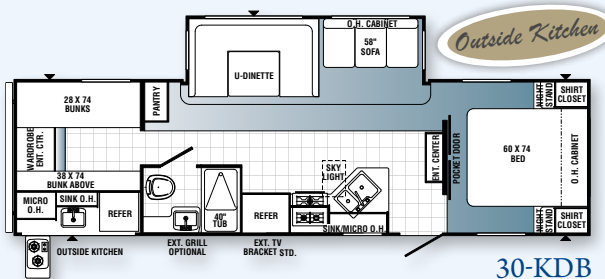
30-FQSS



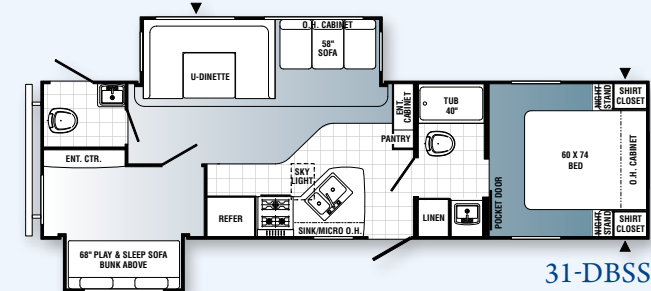
31-BHSS



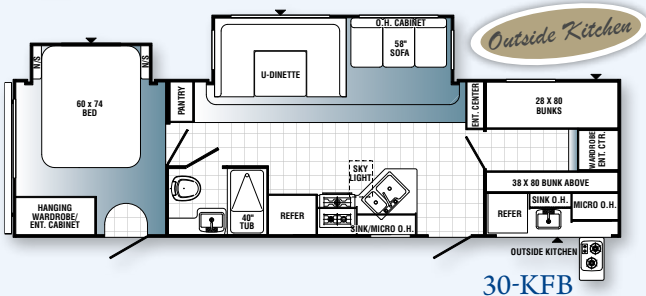
32-FKSL



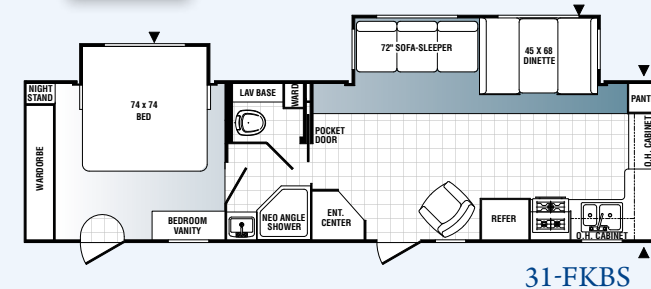
30-KDB



31-DBSS



30-KFB



31-FKBS



Pantry with deep storage means less time in the kitchen!
MODEL 28 KRB shown

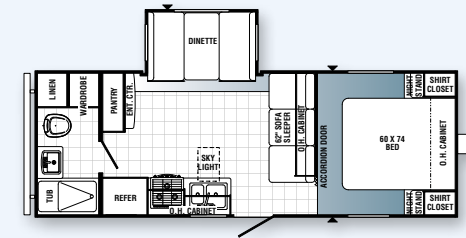
FIFTH WHEELS



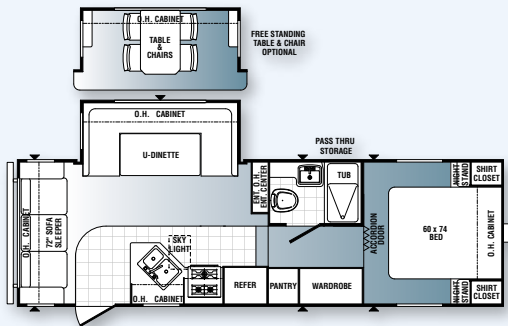
Puma offers seven fifth wheel floor plans. All models are equipped with a multitude of standard features, plus extra options can be added to tailor your Puma fifth wheel to your needs and lifestyle. Interiors feature residential style kitchens with designer linoleum flooring and optional home theater surround sound systems for your enjoyment.

MODELS	230-FBS	253-FBS	259-RBSS	276-RLSS	295-BHSS	295-KBH	303-RKSL
Hitch Dry Weight (lbs.)	1107	1026	1391	1456	1073	1016	1001
Dry Axle Weight (lbs.)	4663	5884	5028	5995	6796	7530	6729
Total Dry Weight (lbs.)	5770	6910	6419	7451	7869	8546	7730
Carrying Capacity (lbs.)	1874	4226	4669	3702	3314	2167	3381
GVWR (lbs.)	8107	11,186	11,551	11,616	11,233	11,176	11,161
Tire Size	15"	15"	15"	15"	15"	15"	15"
Interior Height	80"	80"	80"	80"	80"	80"	80"
Exterior Height w/AC	12'2"	12'2"	12'4"	12'4"	12'4"	12'4"	12'4"
Exterior Width	96"	96"	96"	96"	96"	96"	96"
Overall Length	24'5"	27'0"	28'8"	30'2"	33'7"	33'7"	31'0"
Fresh Water Capacity (gal.)	51	51	51	51	51	51	51
Grey Water Capacity (gal.)	42	84	84	84	42	64	84
Black Water Capacity (gal.)	42	32	32	32	32	42	32
Awning Size	14'	16'	12'	15'	18'	18'	15'

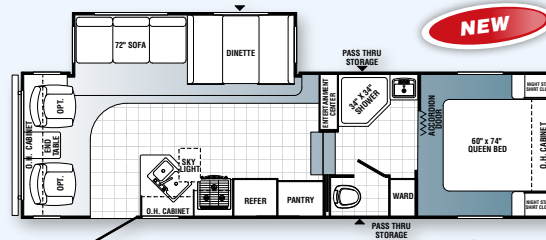
Fifth wheel weights include optional 13.5 BTU roof air, double door refer, oven and awning.



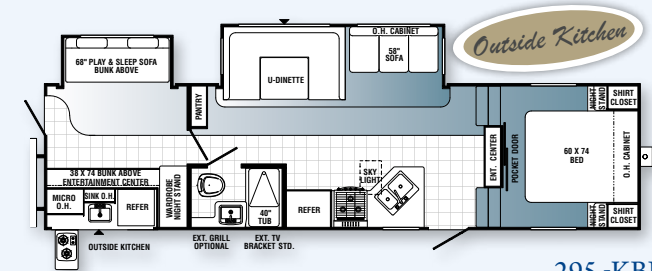
230-FBS



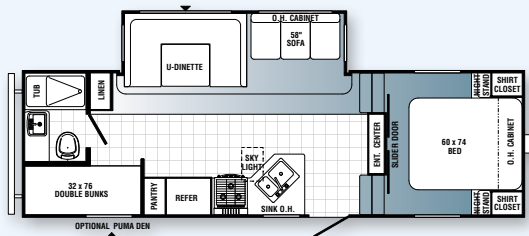
253-FBS



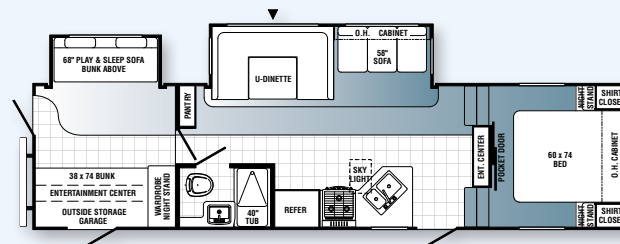
276-RLSS



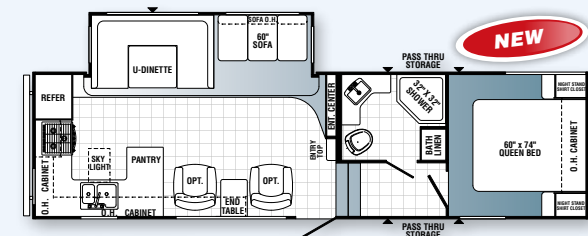
295-KBH



259-RBSS



295-BHSS



303-RKSL



▲ MODEL 303-RKSL

SHOWN IN STONE DECOR WITH OPTIONAL PEAR WOOD FLOOR BY BEAUFLOR®

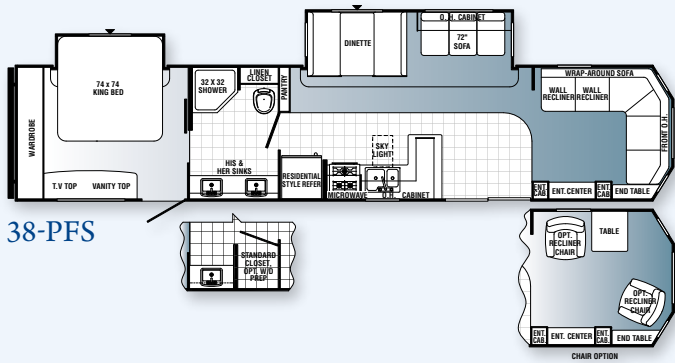
PARK TRAILERS



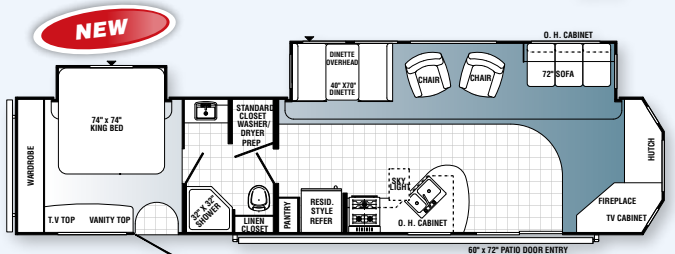
▲ MODEL 39-PTD

[8]

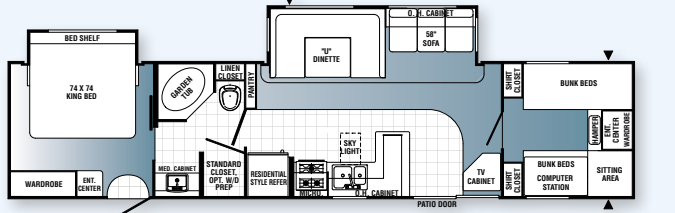
SHOWN IN FRENCH ROAST DECOR WITH BROWN MAPLE GLAZED CABINETRY



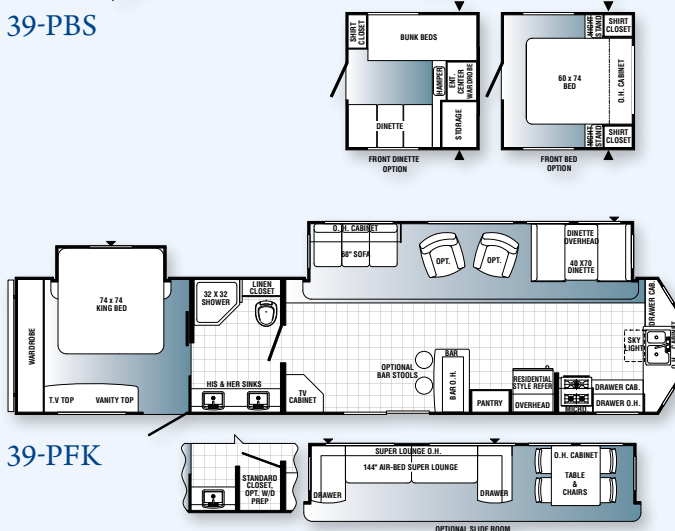
38-PFS



38-PLF



39-PBS



39-PFK

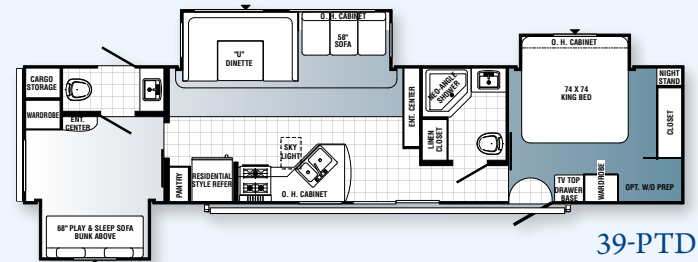
MODELS	38-PFS	38-PLF	39-PBS	39-PFK	39-PTD	39-PRL
Hitch Dry Weight (lbs.)	1245	1695	1295	1590	1405	1265
Dry Axle Weight (lbs.)	7645	7870	7930	7845	8795	8470
Total Dry Weight (lbs.)	8890	9565	9225	9435	10,200	9785
Carrying Capacity (lbs.)	1752	2480	2180	1802	902	1640
GVWR (lbs.)	11,405	12,095	11,455	11,750	11,565	11,425
Tire Size	15"	15"	15"	15"	15"	15"
Interior Height	80"	80"	84"	84"	84"	84"
Exterior Height w/AC	11'9"	11'9"	11'9"	11'9"	11'9"	11'9"
Exterior Width	96"	96"	96"	96"	96"	96"
Overall Length	41'	41'9"	40'2"	41'	41'	40'3"
Fresh Water Capacity (gal.)	42	51	51	51	51	51
Grey Water Capacity (gal.)	84	84	84	84	84	84
Black Water Capacity (gal.)	42	42	42	42	42	42
Awning Size	21'	21'	21'	21'	21'	21'

Park trailer weights include optional 13.5 BTU roof air, double door refer, oven and awning.

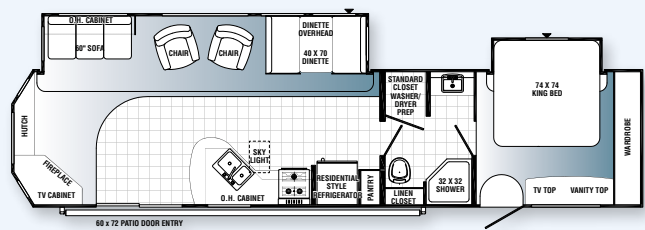


LEISURE

Enjoy your own vacation home with a Puma Park Trailer. They offer the best in leisure living with six spacious floor plans, two bedroom options, and a den option to accommodate your family's needs. Residential style furnishings and a large master bedroom with king size bed ensure your vacationing comfort.



39-PTD



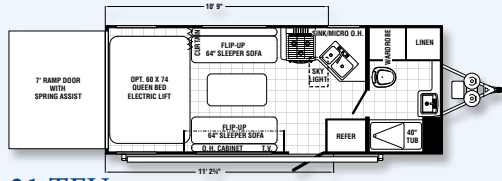
39-PRL



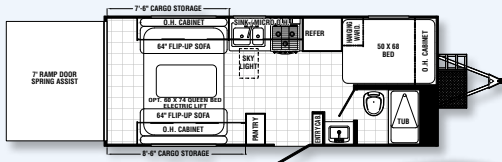
Bunk Beds provide plenty of space and rest for your family!

TOY HAULER

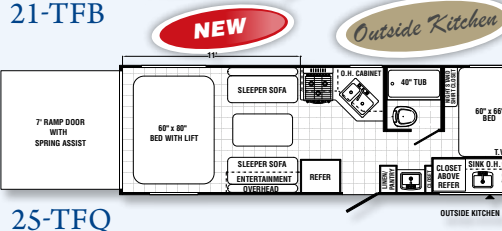
TRAVEL TRAILERS



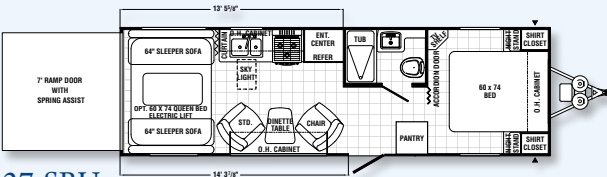
21-TFU



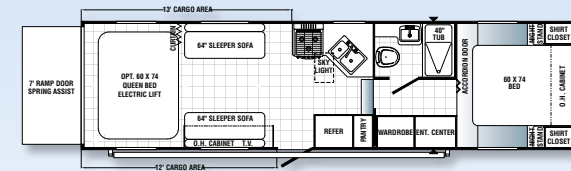
21-TFB



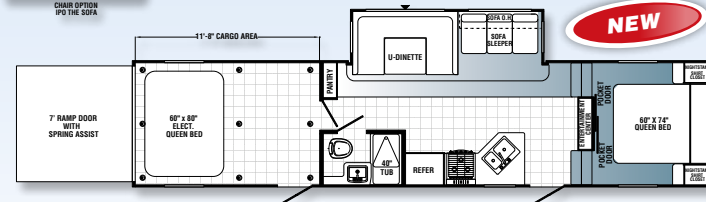
25-TFQ



27-SBU



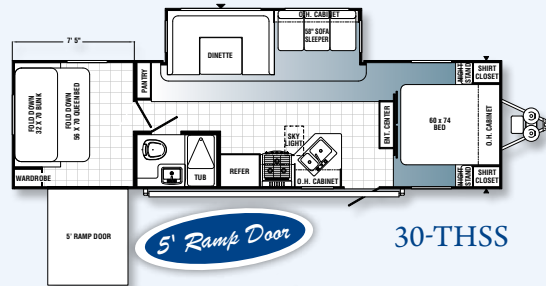
298-FQU



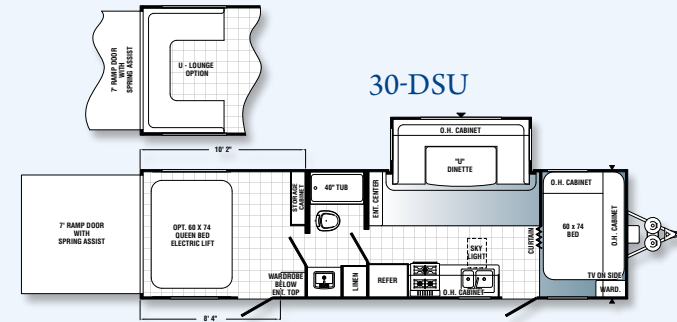
351-THSS

MODELS	21-TFU	21-TFB	25-TFQ	27-SBU	30-THSS	30-DSU	298-FQU	351-THSS	356-QLB
Hitch Dry Weight (lbs.)	861	773	797	902	1145	1124	1819	1481	2557
Dry Axle Weight (lbs.)	4672	4484	6153	6028	6200	6599	5810	7950	6651
Total Dry Weight (lbs.)	6004	5257	6950	6930	7345	7723	7629	9431	9208
Carrying Capacity (lbs.)	1856	2516	3957	4082	3098	3378	3433	4000	4432
GVWR (lbs.)	7861	7773	10,957	11,062	11,305	11,284	11,979	13,481	14,557
Tire Size	205/75D/14	205/75D/14	225/75D/15	225/75D/15	225/75D/15	225/75D/15	225/75D/15	235/80D/16	235/80D/16
Interior Height	84"-96"	84"-96"	84"-96"	84"-96"	80"	84"-96"	8'0"	84"-96"	8'6"
Exterior Height w/AC	12'	12'	12'	12'	11'1"	12'	12'	12'	13'2"
Exterior Width	96"	96"	96"	96"	96"	96"	96"	96"	96"
Overall Length	24'7"	24'10"	29'8"	30'5"	35'4"	33'5"	30'11"	37'0"	35'9"
Fresh Water Capacity (gal.)	51	51	100	100	100	100	100	100	100
Grey Water Capacity (gal.)	32	32	42	42	42	42	32	42	42
Black Water Capacity (gal.)	32	32	42	32	32	42	42	42	32
Awning Size	14'	14'	14'	16'	16'	18'	18'	21'	21'

All Toy Haulers have 7' Ramp Doors except the 30-THSS & 356-QLB.



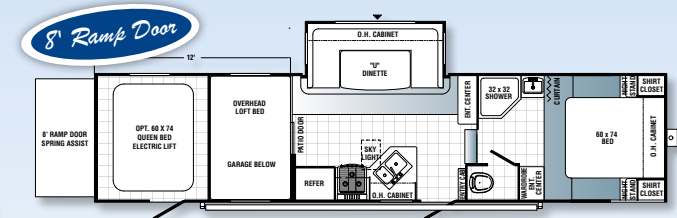
30-THSS



30-DSU



FIFTH WHEELS



356-QLB



▲ MODEL 351-THSS
SHOWN IN NUTMEG DECOR WITH NEW OPTIONAL GLAZED CHERRY CABINETRY



- A.** Rubber Roof (12 year warranty)
- B.** Rugged, Powder Coated Steel I-Beam Frame
- C.** Sturdy .024 Gauge Aluminum Skin
- D.** Exterior Amber Lens Patio Light
- E.** Exterior Hitch Light for Night-Time Hook Up
- F.** 51 Gallon Fresh Water Tank

- G.** Bold Exterior Graphics
- H.** Residential Grade Carpet-17 oz. with Pad
- I.** Color Band Metal Enhances Exterior Looks
- J.** Sidewall Studding Spaced 16" Apart
- K.** Longitudinal Floor Studding Spaced 12" Apart
- L.** 5/8" One Piece Floor Decking

- M.** New Beauflor® Linoleum Flooring Cold Crack Resistant
- N.** R7 Fiberglass Insulation Cut and Glued Between Sidewall Studs
- O.** 4-1/2" Crowned Truss Roof Rafters
- P.** Steel Crossmembers for Added Support

- Q.** Floor Ducted Heat
- R.** Insulated Wrapped Ducted Air Conditioning Runs
- S.** 3/8" Roof Decking
- T.** Puma "Next Generation" Enclosed and Heated Water Tank
- U.** Radius Exterior Doors

PUMA FEATURES



Outside Kitchen

SIDE PAW KITCHEN

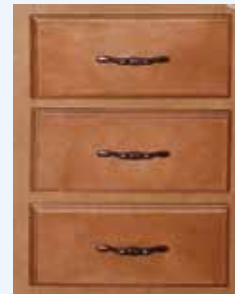
This premiere outside accessible kitchen is yet another innovation from Team Puma. Every convenience of your inside kitchen is offered for outside family fun. Additionally, the outside entertainment center provides true and complete "tailgating" with all the conveniences of home.



▲ DECORATIVE KITCHEN BACKSPLASH



▲ HARD VALANCES IN ALL BEDROOMS



◀ SOLID WOOD DRAWER FRONTS

▼ KITCHEN SKYLIGHT



TOY HAULER FEATURES

Make room for your toys with bunks and sofas up or convert the back area to loads of sleeping space or to a dining area.



FUEL STATION



BAGGAGE COMPARTMENT WITH SLIDING TRAY



TOY HAULER WITH OPTIONAL BEDS



PUMA DEN DOOR
(Optional)



OUTSIDE ENTERTAINMENT
(Available on Select Models)



COMFORTABLE SEATING

STANDARD FEATURES

EXTERIOR

- Radius Entry Doors
- Powder Coated Frames
- EZ Lube Axles
- Tinted Safety Glass
- Clamp Ring Windows
- Double Entry Doors (Where Applicable)
- Pass-Thru Storage (Where Applicable)
- Rubber Roof - 12 Year Manufacturer's Warranty
- 9" Three-Tier Steps
- Rain Gutters
- Automotive Style Fender Skirts
- Radius Trunk Doors
- Wrapped Darco Underbelly
- One Piece, 24' Sheet, 5/8" Floor Decking (25 Year Manufacturer's Limited Warranty by Affiliated Resources, Inc.)
- 2 x 3 Flush Joists on 12" Centers
- Lighted Pass-Thru Exterior Compartments (Where Applicable)
- 2-20 lb. Gas Bottles
- 6 Gal. DSI Hot Water Heater
- Rack and Pinion Electric Slide System with Manual Override (Standard on all Slide-Out Models)
- Heavy Duty Storage Door for the Puma Den Option
- Clamp Ring Luggage Doors
- Large 31 x 14 Front Pass Thru Baggage Doors (Travel Trailers Only)
- Radial Tires

- Kitchen Ball Bearing Drawer Guides
- Plant Built Wood Medicine Cabinet with Mirrored Door
- 60/40 Deep Double Bowl Kitchen Sink
- High Rise Kitchen Faucet
- Arch Top Mortise and Tenon Cabinet Doors with Glaze Insert
- Suburban 3-Burner, High Output Range
- Knife Rack
- Upgrade Window Treatment
- 55 Amp Converter with Battery Charger
- Spice Rack (Kitchen)
- Divided Silverware Drawer (All Models)
- Innerspring Mattress
- Bedroom Carpet
- 1 Sink Cover
- Single Door Refrigerator
- Power Vent in Bath
- 12V Shower Light
- 5 Interior Decors
- Coat Hooks in Entry Way
- Quilted Bunk Mats
- Oil Rub Bronze Hardware, Light and Bath Fixtures
- Cabinet Doors under Dinette Seats
- Upgraded Carpet (17 oz. w/ Pad)
- Upgraded Residential Beauflor® Linoleum w/ 7 year cold crack warranty
- Full Length Wardrobe and Shirt Closet in Front Bedrooms (Travel Trailer Only)
- Lambrequin Window Treatments (Living Room and Bedrooms)
- Solid Wood Drawer Fronts
- Kitchen Skylight
- Decorative Kitchen Splashboard
- Hard Valances in all Bedrooms
- New Larger Countertops (Most Models)

STANDARD SAFETY FEATURES

- CO2 Detector
- LP Leak Detector
- Fire Extinguisher
- Smoke Detector

OPTIONS

- Water Purifier
- Sink Cover
- Range Cover
- Double Door Refrigerator
- 6 Gal. Gas/Electric DSI Hot Water Heater
- Water Heater By-Pass (Forced Option)
- 21" Oven
- Microwave
- Create-a-Breeze™ Fan (Exchange)
- AM/FM CD/DVD Stereo
- TV Antenna with Booster and Cable Hook-Up
- Bedroom TV Hook-Up (NA 19-FS)
- Extra Roof Vent
- 13,500 BTU Ducted A/C
- 15,000 BTU Ducted A/C
- Bedspread

- Outside Grill
- Tub Surround
- Mini Blinds
- Day/Night Shades
- Wall Border
- Front Window with Rock Guard (Travel Trailers Only)
- Awning
- Electric Awning
- 2 Stabilizer Jacks
- 4 Stabilizer Jacks (Travel Trailers Only)
- Outside Shower
- Diamond Plate
- Fiberglass Front Cap w/Diamond Plate (Fifth Wheels & Travel Trailers)
- Power Front Jacks (Fifth Wheels Only)
- 30 lb. Gas Bottles and Cover
- 26" LED TV
- 32" LCD TV

- Spare Tire and Carrier
- AM/FM CD/DVD Home Theater Surround Sound System
- PUMA Den*
- Swivel Rocker*
- Bath Skylights
- Free Standing Dinette*
- Overhead Cabinets in Slide Room*
- Hide-A-Bed Sofa*
- Comfort Air Bed
- Glass Shower Door*
- Roof Ladder
- Heated Tanks
- Stacked Bunk Option (19-FS and 27-FQ Only)
- Upgraded Serta® Mattress
- Enclosed Underbelly

PARK TRAILERS

ADDITIONAL STANDARDS

- 6 Gal. Gas/Electric DSI Hot Water Heater
- Upgraded Serta® Mattress
- Home Theater DVD Surround Sound AM/FM/CD Player
- FS Range
- Phone Jacks
- Patio Door
- Tinted Safety Glass
- Residential Refrigerator with Ice Maker
- Brown Maple Glazed w/Raised Panel Doors
- Lambrequin Window Treatments
- Bedroom Roof Vent
- 35,000 BTU Furnace
- New Larger Countertops
- Upgraded Residential Beauflor® Linoleum w/ 7 year cold crack warranty

- 26" LED TV
- 32" LCD TV
- Double Door RV Refrigerator IPO House Type
- 50 Amp Service
- Washer/Dryer Prep with 50 Amp Service
- Stackable Washer/Dryer Includes Prep
- Convection Microwave/Cook Top
- Create-A-Breeze™ Fan (Exchange) Fantastic Vent Fan
- 12 V. Ceiling Fan in Living Room
- 12 V. Ceiling Fan in Bedroom
- TV Antenna with Booster and Cable Hook-Up
- Bedroom TV Hook-Up
- 13,500 BTU Ducted Air Conditioning
- 15,000 BTU Ducted Air Conditioning
- King Bedspread
- Outside Grill
- Outside Shower
- 30" Entry Door IPO of Sliding Patio Door
- Tub Surround
- Bath Skylight
- Glass Shower Door
- Mini Blinds
- Day/Night Shades
- Freestanding Dinette
- Overhead Cabinets in Slide Room

- Wall Border
- Woodgrain Linoleum
- Bar Stools (2 per Floorplan)
- Swivel Rocker
- 2 Exterior Speakers
- Hide-a-Bed
- Comfort Air Bed
- 21' Awning
- Electric Awning
- 2 Stabilizer Jacks
- 4 Stabilizer Jacks
- Roof Ladder
- Diamond Plate
- 30 Lb. Gas Bottles and Cover
- Heated Tanks
- Spare Tire and Carrier
- Folding Grab Handle
- Carbon Monoxide Detector
- Fireplace (Available Certain Models)
- Z240

RESIDENTIAL PACKAGE

- Residential Style 18 Cu. Ft. Refer
- Patio Door
- Free-Standing Range

ADDITIONAL STANDARDS

- Heavy Duty I-Beam Frames with EZ Lube Axles
- 1/4" x 8" Tie Down Reinforcement Plates for Secure Cargo Tie Downs
- Beaver Tail Rear Floor for Easy Loading
- 2" x 2" Wood Framed Sidewalls on 16" Centers
- 2" x 3" Floor Joist on 10" Centers
- R-7 Insulation Floor, Walls, and Ceiling for Comfort
- One Piece 5/8" Floor Decking with a 25 Year Limited Warranty
- One Piece Beauflor® Linoleum
- 3/8" Walkable Roof Decking Over 4-1/2" Crowned Roof Rafters
- One Piece Rubber Roof with 12 Year Warranty
- Insulated Duct For Air Conditioning in Ceiling
- Floor Ducted Heat
- 55 Amp Converter Standard
- 7' Rear Ramp Door Height, 8' on 30-THSS and 356-QLB
- 5.1 Dolby Surround Sound System with Sub-Woofer, AM/FM/DVD Player, Weather Band, XM Radio, and Plug-In for iPod (N/A 21-TFB and 21-TFU)
- 26" LED TV with Movable Bracket for Easy Mounting Inside or Outside (Most Models)
- Front Baggage Compartment with Sliding Tray (27-SBU, 298-FQU & 356-QLB)
- Front Exterior Baggage Compartment
- Sofas Fold-Down into Queen Bed
- Tinted Safety Glass
- All Interiors Available w/Standard Maple Cabinets or Optional Glazed Cherry

OPTIONS

- Water Purifier
- Sink Cover
- Range Cover
- Galley Extension
- Double Door Refrigerator
- 6 Gal. Gas/Elec. DSI Hot Water Heater
- Water Heater By-Pass
- Oven
- Microwave
- Convection Microwave/Cook Top
- Create-A-Breeze™ Fan (Exchange Fantastic Vent Fan on Travel Trailers)
- AM/FM CD/DVD Stereo (21-TFU and 21-TFB Only)
- Home Theater DVD Sound System with AM/FM CD
- 26" LED TV (Available on Most Models)
- 32" LCD TV (IPO) Where Available
- 2 Exterior Speakers
- TV Antenna with Booster & Cable Hook-Up
- Bedroom TV Hook-Up
- Extra Roof Vent
- 13,500 BTU Ducted Air Conditioning
- 15,000 BTU Ducted Air Conditioning
- Bedspread
- Manual Track Queen Bed (Travel Trailers Only)
- Single Electric Track Queen Bed
- Double Electric Track Queen Bed
- Tub Surround
- Bath Skylight
- Glass Shower Door (356-QLB Only)
- Mini Blinds
- Day/Night Shades (Fifth Wheels Only)
- Wall Border
- Woodgrain Linoleum
- Awning
- Electric Awning
- 1 Swivel Chair (27-SBU Only)
- 2 Stabilizer Jacks
- 4 Stabilizer Jacks (Travel Trailers Only)
- Power Front Jacks (Fifth Wheels Only)
- Roof Ladder
- Outside Shower
- Outside Grill (Travel Trailers Only)
- 4.0 KW Gas Onan Generator
- 3.6 KW LP Onan Generator
- 30 Gal. Fuel Pump Station
- 30 lb. Gas Bottles & Cover
- Zip Screen
- Hide-a-Screen
- Hitch Cover (Fifth Wheels Only)
- Front Fiberglass Cap with Diamond Plate
- Diamond Plate
- Mission Alum. Modified Rim
- Heated Tanks
- Wash Down Kit
- Spare Tire & Carrier
- Folding Grab Handle
- Carbon Monoxide Detector
- Upgraded Serta® Mattress (Select Models)
- Enclosed Underbelly

DECOR OPTIONS

Available all Models



Nutmeg



Pesto



Graphite



French Roast



Stone

PUMA PREMIER PACKAGE (AVAILABLE ON MOST MODELS!)

- Folding Grab Handle
- Raised Panel Cabinet Doors (Eye Level Living Room and Kitchen)
- Overhead Cabinets in Super-Slide Models
- Bi-Fold Doors In Place of Curtains (Where Applicable)
- Day/Night Window Shades
- Upgraded Front Cap (Fifth Wheels)
- AM/FM CD/DVD Home Theater Surround Sound System
- Color Band Metal at the Top of the Coach
- Diamond Plate Standard
- Metal Rear Bumper Cover
- Chrome Trim Rings and Hubs on the Wheels
- Roof Ladder
- Special Puma Premier Package Decal
- Upgraded Serta® Mattress
- Outside Shower
- 2-Exterior Speakers
- 30 lb. LP Gas Bottles
- 26" LED TV
- Sink Cover
- Range Cover
- Water Purifier
- 6 Gal. Gas & Electric Hot Water Heater
- Wall Border
- Outside Grill

*Available on Select Models



PRE-DELIVERY INSPECTION FACILITY

20,000 square feet of quality assurance. The bare essentials for a premium product. This state-of-the-art facility gives immediate daily feedback to production for quality assurance in every unit built.



Forest River, Inc. encourages our customers to purchase their Forest River products from a local dealership whenever possible for the following reasons:

It is the goal of Forest River, Inc. that all of our RV owners fully enjoy the RV experience and that customer satisfaction meets or exceeds their expectations!

- 1) Forest River, Inc. dealers are independently owned and operated businesses so priority service and scheduling is at their discretion and is often provided to customers that purchased their unit at that dealership.
- 2) Purchasing locally allows customers to establish meaningful relationships with a dealer, enhancing the RV experience through assistance with product questions, user tips or RV regulations for your state or country, and much more!
- 3) Canadian customers must meet requirements to bring an RV purchased out of the country to their home. These requirements may involve additional inspections and certifications, taxes and fees. Your local Canadian Dealer is a professional at meeting these requirements.
- 4) Scheduling timely warranty repairs and adjustments through a local dealership provides far greater flexibility and convenience to you, the customer!



Learn More

Scan this barcode using a QR Reader on your smart phone to learn more about Forest River.



A Berkshire Hathaway company.

A STYLE TO FIT EVERY NEED!



TRAVEL TRAILERS



FIFTH WHEELS



PARK TRAILERS



TOY HAULER

On The Web at: www.palominorv.com

YOUR DEALER

PUMA DIVISION

Forest River, Inc.
2551 Century Drive
Goshen, IN 46528
Phone: (574) 642-0610
www.palominorv.com

All illustrations and specifications contained in this literature are based on the latest product information at time of publication. Forest River, Inc. reserves the right to make changes in prices, colors, materials, equipment and specifications at anytime without notice and assumes no responsibility for any error in this literature. All weights shown are approximate. All units are shipped F.O.B. point of manufacture.

CONSULT YOUR LOCAL DEALER FOR WARRANTY INFORMATION.