

BIG ON EXTRAS  
NOT ON WEIGHT

**WHITE HAWK** 2012  
ULTRA LITE



WHITE HAWK® | ULTRA LITE TRAVEL TRAILERS BY JAYCO®

AMERICA'S MOST LIVEABLE RVs.



WHITE HAWK 28DSBH | HAZELNUT

WHITE HAWK | ULTRA LITE TRAVEL TRAILER



**TWICE THE EXPANDABLE  
LIVING SPACE OF STANDARD  
LIGHTWEIGHTS.**



**36" DEEP SLIDEOUTS** The new White Hawk adds twice the expandable living space of standard lightweights making for spacious, liveable interiors.

Good things do come in small packages. Take for instance, the **2012 JAYCO WHITE HAWK**. Your truck will think she's small, but your family will think differently. Big on amenities, like the roomy **CHIL N' STOR OUTDOOR COMPARTMENT** with standard exterior refrigerator and the **WELL-EQUIPPED ELITE KITCHEN** with rounded countertops, decorative backsplash and halogen lighting, your camping experience will be enjoyable—from towing to teardown—and everything in between. At Jayco, we're giving new meaning to wide-open spaces—starting with your RV.



WHITE HAWK 27DSRL | BROWNSTONE



WHITE HAWK 28DSBH | DOUBLE-OVER-DOUBLE BUNKS



WHITE HAWK 27DSRL | BROWNSTONE



WHITE HAWK 28DSBH | HAZELNUT

**THE ELITE KITCHEN** Cook in style thanks to White Hawk's standard Elite kitchen, packed with high-end features like recessed halogen lighting, decorative backsplash, a residential-style fridge with magnet-friendly black inserts and Amish-crafted cabinetry with glass and beadboard inserts.



NOBODY OFFERS A  
**BETTER**  
WARRANTY  
**THAN WE DO**

**YOU WANT YOUR RV TO LAST A LONG TIME.**

That's why we offer our exclusive 2-year Co-Pilot Warranty, the most comprehensive warranty program in the industry. Every Jayco RV undergoes rigorous quality control testing before it leaves the factory, so you can be confident your new Jayco will continue to provide the ultimate in liveability and reliability for years to come.

# WE SET THE STANDARD FOR CONSTRUCTION

At Jayco, we've built a reputation for superior construction and craftsmanship. We always use top-quality materials and innovative manufacturing techniques—down to the smallest details.

## WALL CONSTRUCTION

- 1 Vacuum-bonded layers: Involves 15-18 minutes of 144 tons of pressure to ensure a strong bond
- 2 Welded aluminum frames with metal backers: Lighter than wood, increases towability
- 3 Bead-foam insulation: Maintains interior temperatures
- 4 Extra-wide corner seals: Prevents leaks on the corner molds, baggage and entrance doors and window seals
- 5 Innovative, aerodynamic front profile: Eliminates angled profile, increasing towability

- 7 Bead-foam insulation: Maintains interior temperatures
- 8 I-Class structural I-beam frame: One-piece design, provides more durability than other welded three-piece frames
- 9 Innovative A-frame: Fully integrated, and not welded, prevents buckling

## ROOF CONSTRUCTION

- 10 3/8", 4-ply, plywood decking: Creates White Hawk's sturdy, full walk-on construction
- 11 5" crowned truss rafters: Provides the industry's strongest roof frame
- 12 Batting attic insulation: Maintains interior temperature
- 13 Seamless Alpha Ply roof material: Features one-piece design, ensuring better leak prevention

## FLOOR CONSTRUCTION

- 6 Vacuum-bonded layers: Backed by computer monitoring and constant quality control checks, Jayco prides itself on building a solid foundation



## ROADSIDE ASSISTANCE

Travel worry-free with Jayco's Customer First Roadside Assistance program, yours at no cost during your first year of ownership. This program is offered through National Motor Club, the largest RV emergency road service in the country, and gives you immediate access to dependable roadside assistance and support services with a simple phone call.



TO LEARN MORE ABOUT OUR QUALITY CONTROL TESTING, SCAN HERE WITH YOUR SMARTPHONE.



THE ULTIMATE VISTA:  
MAXVIEW WINDOWS



A STANDARD EXTERIOR FRIDGE:  
CHIL N' STOR OUTDOOR STORAGE

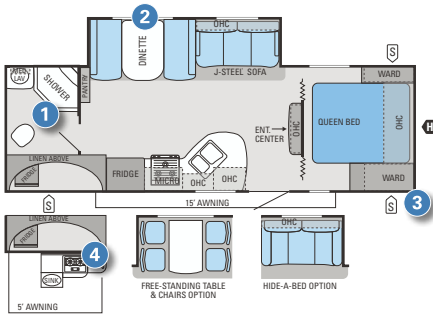


EFFORTLESS TOWING:  
TRACKER WIDE AXLES



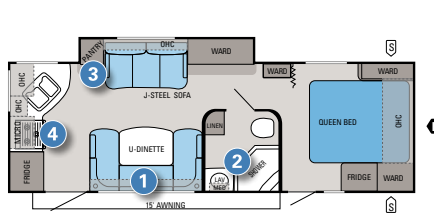
AN OUTDOOR OPTION:  
INDOORS OUT KITCHEN

## FLOORPLANS



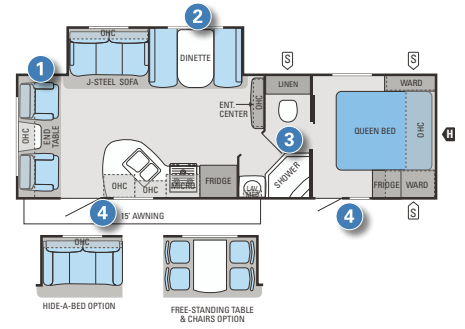
### WHITE HAWK | 26DSRB

1 | Huge rear bathroom with neo-angled glass shower door; 2 | 60" MaxView dinette window; 3 | Extra large exterior storage compartments; 4 | Indoors Out camp kitchen option



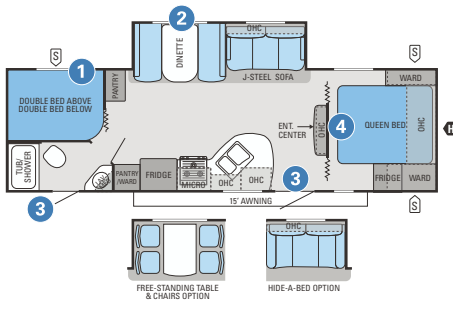
### WHITE HAWK | 26SRK

1 | U-dinette with 70" MaxView window; 2 | Neo-angled glass shower door; 3 | Large dual pantry/wardrobe cabinets; 4 | popular rear-kitchen design



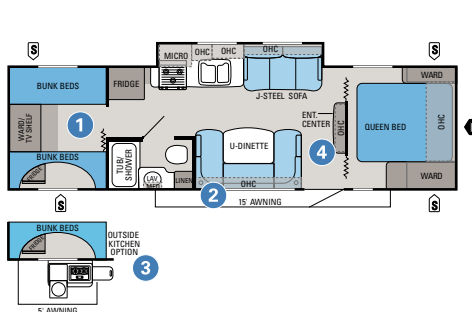
### WHITE HAWK | 27DSRL

1 | Rear lounge floorplan; 2 | 60" MaxView dinette window; 3 | Large walk-through bathroom with neo-angled glass shower door; 4 | dual-entrance doors



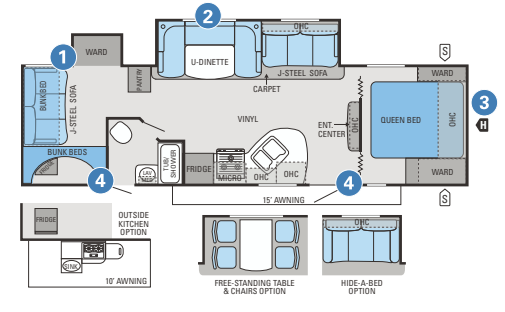
### WHITE HAWK | 28DSBH

1 | Double bunk over double bunk (unit sleeps 8-10); 2 | 60" MaxView dinette window; 3 | Double entrance door; 4 | Hutch with entertainment center



### WHITE HAWK | 29SQB

1 | Rear bunk room with quad bunks (unit sleeps 8-10); 2 | U-dinette with 70" MaxView window; 3 | Indoors Out camp kitchen option; 4 | Hutch with entertainment center

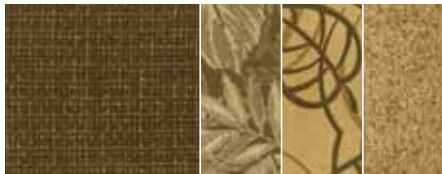


### WHITE HAWK | 31DSL B

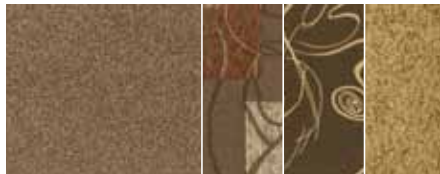
1 | Rear bunk room with slideout, J-Steel sofa and TV hookup (unit sleeps 9-11); 2 | U-dinette with 70" MaxView window; 3 | Half-ton towable; 4 | Dual entrance doors

## INTERIOR DÉCOR CHOICES

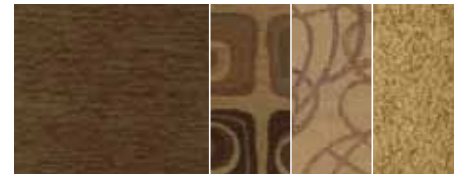
### HAZELNUT



### BROWNSTONE



### AMARETTO



### WOOD



FOR A COMPLETE LIST OF STANDARDS AND OPTIONS, SCAN HERE WITH YOUR SMARTPHONE OR VISIT JAYCO.COM.



# TRUE VALUE OF OWNERSHIP

With Jayco, you get more amenities, more liveable, home-like features and superior construction for less maintenance and greater resale value. **Simply put, you won't find another RV packed with more TRUE VALUE.**



## MORE STANDARD FEATURES

**A** | White Hawk features a two-toned paint, infused fiberglass exterior. Meanwhile, maximize space with **B** | roomy pantries, **C** | a messaging/charging center and **D** | stylish and functional dinettes with rounded access cabinet doors

## COMFORT AND CONVENIENCE

White Hawk is packed with features that make it more efficient, comfortable and easier to use, like **A** | the Utility Lighting System, complete with entrance step, baggage compartment, hitch area and dump station lighting. **B** | Meanwhile, stay comfortable with White Hawk's heating and cooling system, featuring central A/C with ceiling ductwork and directional/closeable vents, plus a heated and enclosed underbelly with in-floor furnace ducting. **C** | Finally, White Hawk boasts Atwood appliances, including a quick-refresh water heater, energy-efficient furnace and easy-to-use oven.



## STANDARDS AND OPTIONS

### STANDARD INTERIOR EQUIPMENT

- ⬆ Atwood high-efficiency furnace, water heater and oven
- ⬆ Ball bearing drawer guides, 50-lb. capacity with full-drawer extension
- ⬆ Burnished, cherry-stained hardwood cabinetry
- ⬆ Diamondfloor vinyl flooring
- ⬆ Elite Kitchen: Ceiling feature with recessed halogen lights (select models), feature cabinetry with glass and beadboard inserts, 12" decorative backsplash, large rounded countertops, 6.3 cu. ft. refrigerator with black metal inserts, oversized 60/40, deep bowl sink
- ⬆ J-Steel sofa with residential styling
- ⬆ Large MaxView tinted safety-glass dinette window (60" on standard dinettes, 70" on U-dinettes)
- ⬆ Message center with hidden switches/charging center
- ⬆ Pleated privacy shades throughout
- ⬆ Residential-style carpeting
- ⬆ Rounded, residential-style dinette with wood-grain accent table
- ⬆ Wood-grain accent wall paneling

### STANDARD EXTERIOR EQUIPMENT

- ⬆ 5" crowned truss rafters for a fully walkable roof
- ⬆ Aerodynamic front profile
- ⬆ Carefree patio awning
- ⬆ Chil N' Stor exterior baggage compartment with 1.5 cu. ft. refrigerator
- ⬆ Dark tinted safety-glass windows
- ⬆ Electric slideouts
- ⬆ Fold-away grab handle
- ⬆ Front diamond plate
- ⬆ Heated and enclosed underbelly
- ⬆ Integrated A-frame
- ⬆ Marine-grade exterior speakers (2)
- ⬆ Radial tires
- ⬆ Structural steel I-beam frame
- ⬆ TuffShell vacuum-bonded laminated construction
- ⬆ Two-toned, Mocha exterior paint package with HD graphics
- ⬆ Wide-stance Tracker axles
- ⬆ Utility lighting system (step, hitch, baggage and dump station)

### OPTIONS

- ⬆ Aluminum rims
- ⬆ Bumper-mount outside grill
- ⬆ Carefree adjustable pitch electric awning
- ⬆ Customer Value Package: 6 gal. gas/electric DSI water heater, 13,500-BTU ducted A/C, ABS tub surround, ABS gas bottle cover, bath skylight, microwave with carousel, outside shower, oven, spare tire and carrier
- ⬆ Customer Value Package with 15,000-BTU ducted A/C
- ⬆ Electric stabilizer jacks (4)
- ⬆ Electric tongue jack
- ⬆ Free-standing table with 4 chairs (select models)
- ⬆ Hide-a-bed (select models)
- ⬆ Indoors Out kitchen with electric awning (select models)
- ⬆ Indoors Out kitchen with manual awning (select models)
- ⬆ Technology Package: 26" LCD HDTV with 180-degree viewing angle and AM/FM/CD/DVD player
- ⬆ Roof ladder

## SPECIFICATIONS

FLOORPLAN	EXTERIOR LENGTH	EXTERIOR WIDTH	EXTERIOR HEIGHT (WITH A/C)	INTERIOR HEIGHT	UNLOADED VEHICLE WEIGHT (LBS.)	DRY HITCH WEIGHT (LBS.)	GROSS VEHICLE WEIGHT RATING (LBS.)	CARGO CARRYING CAPACITY (LBS.)	FRESH WATER CAPACITY (GAL.) (WITH WATER HEATER)	GRAY WASTEWATER CAPACITY (GAL.)	TOILET/BLACK WASTEWATER CAPACITY (GAL.)
26DSRB	29' 11"	96"	128"	78"	5,265	585	7,250	1,985	46.2	30.5	30.5
26SRK	28' 11"	96"	129"	78"	4,925	600	6,950	2,025	46.2	22.5	30.5
27DSRL	30' 11"	96"	128"	78"	5,425	635	7,500	2,075	46.2	30.5	30.5
28DSBH	31' 11"	96"	128"	78"	5,365	610	7,500	2,135	46.2	45	30.5
29SOB	32' 11"	96"	128"	78"	5,450	565	7,500	2,050	46.2	30.5	30.5
31DSL	34' 11"	96"	132"	78"	6,215	685	8,200	1,985	46.2	45	30.5

# A TRADITION OF LIVEABILITY

**THE JAYCO STORY BEGAN IN 1968** when Jayco founder Lloyd Bontrager created an innovative, easy-to-use lifter system that led to a better fold-down camper. Loaded with more comforts and conveniences, Lloyd believed his camper would bring people closer together because it was more liveable. A devoted family man, Lloyd's passion extended to his business as well. In fact, our company's success stems from his insistence on treating everyone at Jayco as family — from our factory to our front office, our salespeople to our suppliers, and our customers to our community.

**BLENDING OLD WORLD AMISH CRAFTSMANSHIP WITH INNOVATIVE TECHNOLOGY**, Jayco is the nation's largest family-owned and operated RV manufacturer today. And while our product line has grown considerably over the years, every unit we build is still guided by Lloyd's vision and a humble desire to help make it easier for families to explore together and relax together. It's what separates us from other RV manufacturers. And it's what continues to make Jayco America's Most Liveable RVs.



AMERICA'S MOST **LIVEABLE** RVs.



Jayco proudly sponsors Tread Lightly!, a nonprofit organization whose mission is to empower generations to enjoy the outdoors responsibly through education and restoration.

**Unloaded Vehicle Weight (UVW):** Sometimes referred to as "Dry Weight," UVW means the typical weight of this trailer as built at the factory. The UVW, as used in product literature and other promotional materials, does not include cargo, fresh water, propane, options or dealer-installed accessories.

**Gross Vehicle Weight Rating (GVWR):** GVWR means the maximum permissible weight of the trailer, including the UVW plus passengers, personal items, all cargo, fluids, options, and dealer-installed accessories. The GVWR is equal to or greater than the sum of the UVW and the CCC.



From RV insurance to extended warranties, JayPlus has it covered. Ask your Jayco dealer about our exclusive JayPlus program today.

**Cargo Carrying Capacity (CCC):** CCC means the maximum weight of all passengers, personal items, food, fresh water, propane, tools, other cargo and dealer-installed accessories that can be carried by the trailer. CCC is equal to or less than GVWR minus UVW. The addition of options will decrease the CCC.

**Hitch Weight (HW):** The hitch weight, as used in product literature and other promotional materials, does not include cargo, fresh water, propane gas, options or dealer-installed accessories. The addition of these types of items will either add to or subtract from the stated hitch weight.



As a Jayco owner, you can be part of the Jayco Jafari International Travel Club. Ask your dealer about the Jafari "flight" in your area, write Jayco or visit our website.

It is important for your safety and enjoyment that your tow vehicle be adequately sized and equipped to tow and handle the GVWR of the RV you select. Review weights and rating of your tow vehicle and consult a competent advisor for questions or advice. Whether you are new to RVing or a veteran, get a feel for the performance of your tow vehicle before heading out on the roadways. When you tow an RV, you must drive differently than when you drive a single vehicle. Practice hooking up, driving, backing up and braking in a safe environment or seek out professional instruction. Jayco affixes a weight label to each RV which lists weight information for that vehicle. See specifications chart inside.

Jayco, Inc., P.O. Box 460, Middlebury, IN 46540, [www.jayco.com](http://www.jayco.com)

See dealer for further information and prices. All information in this brochure is the latest available at the time of publication approval. Jayco reserves the right to make changes and to discontinue models without notice or obligation. Photos in this brochure may show optional equipment and props for photography purposes. RVs built for sale in Canada may differ to conform to Canadian codes. ©2011 Jayco, Inc. 12-WTHK-PL 0112-30K Printed in U.S.A.