

 **SUNOVA**

2007



 **SMARTSPACE**  
WEB**THE CHOICE IS YOURS.**

The 2007 Itasca Sunova® continues to impress RV enthusiasts with its growing list of user-friendly features and options. Choose from six models, each loaded with SmartSpace™ design elements, such as the OnePlace® systems center, which are designed to make the most of the available space. This year, the Sunova looks sharper than ever with an

available UltraLeather™ package (shown here) and an available premium high-gloss exterior by Vetrolite®. If you're serious about Class A comfort and styling, the abundance of features and quality Winnebago Industries® construction make the Itasca Sunova the right choice.

## CLASS A LIVING

Love home-cooked meals? The galley includes a three-burner range and a microwave oven for all your cooking needs. Select the galley upgrade for a range cover, oven, woodgrain refrigerator door facades, silverware tray and wire storage baskets beneath the dinette seats.

You'll enjoy the view when you watch the 24" TV from the comfort of the hoop-base lounge chair (NA 29R). When you're not traveling, this chair can be relocated to your favorite spot in the coach. For an upgraded entertainment experience, add the Home Theater Sound System, which includes a DVD player, amplifier, receiver, five speakers and a subwoofer. Choose the 300-watt inverter and you'll be able to watch TV without a generator or shoreline power.

You can easily adjust your level of privacy when you select the available day/night pleated shades. Greater climate control is available by adding dual-glazed, thermo-insulated windows and a heat pump that uses the air conditioning system to take the chill off cool mornings without using LP.

**WEB** Select a Key Feature

The **WEB** icon designates a Winnebago Industries Key Feature. For further in-depth information and photos, use this drop-down menu or click on the 'Key Features' page at [winnebagoind.com](http://winnebagoind.com).



**LIVING AREA** Our SmartSpace design philosophy helps make the most of the available space, which includes offering a living room slideout that extends thirty inches on most models. This creates more room for quality Stitchcraft furniture, including a dinette with a child safety-seat tether anchor. Cabinet drawers open fully on full-extension slides for easy access.



**WEB ONEPLACE®**  
Frequently used gauges and controls are conveniently placed in one central location.

**WEB POWERLINE®**  
The PowerLine energy management system monitors 110-volt usage and automatically cycles appliances on and off during periods of high demand to prevent tripped breakers when using a 30-amp. service (33T, 34A, 35J only).



**BEDROOM** The bedroom offers a queen-size mattress (king-size on 35J), roomy overhead cabinets, a mirrored wardrobe and a slideout on the 26P, 29R, 34A and 35J.

**DASH** A steering wheel remote and a handheld remote provide convenient controls for the RV Radio® while you drive or relax in the coach.



**VIDEO CAMERA SYSTEM** The turn signals activate the available side view video camera system, allowing the driver to view both sides of the coach through the rearview monitor for added peace of mind when turning.



**REAR STORAGE** A large rear storage trunk on the 30B (shown here) and 33T allows you to easily carry oversized items such as golf clubs and coolers. It can be accessed from the back or side door.

**RIDE AND RELAX**

The Sunova makes driving easy by placing switches, gauges and controls at your fingertips and providing an available rearview monitor to assist with backing. To make trips more pleasant, high-back driver and passenger seats offer lumbar support and adjustments that swivel, slide and recline to suit your style. Both chairs are available in UltraLeather.

The RV Radio® includes AM/FM stereo, CD player, weather band and large, easy-to-use buttons and knobs. Upgrade your RV Radio with the available Sirius® Satellite\* Radio package. Sirius brings you 120 channels of crystal clear programming and a free six-month subscription.

The QuickPort® service connection hatch makes hookups refreshingly simple. It even allows the service compartment door to close with hookups connected.

The standard hitch® lets you tow up to 5,000 pounds and includes a seven-pin connector for easy hookups to towed items.

\* Sirius Satellite radio not available in Canada.



**WEB STORE MORE** This exclusive slideout system allows exterior compartments to extend with the slideroom so you never have to crawl on your hands and knees to reach your gear. The large StoreMore® compartments accommodate bulky and oversized items.



**EXTERIOR SERVICE CENTER** The exterior service center places hookups in one convenient location. Color coded labels make hookups a breeze. The available wash station is great for quick cleanups, while heated holding tanks and a winterization valve let you extend your travel season.



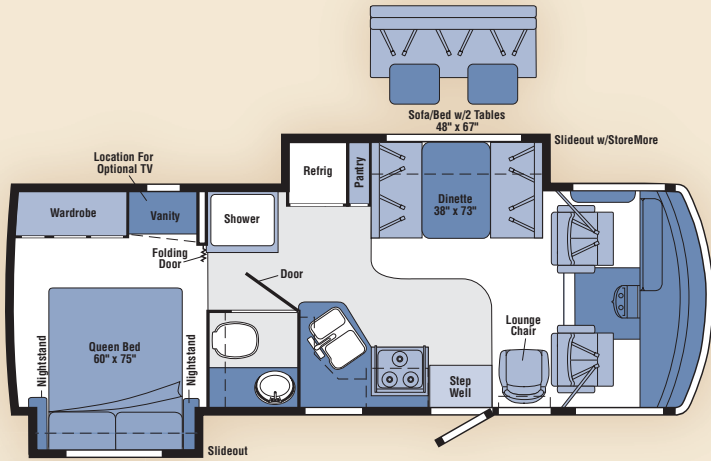
**HYDRAULIC JACKS** New for 2007: our exclusive three-way hydraulic switching system. Control your jacks from the driver's seat, entrance door or service center. Watch the jacks as you lower them from the entrance door or service center for perfect placement on the jack pads.



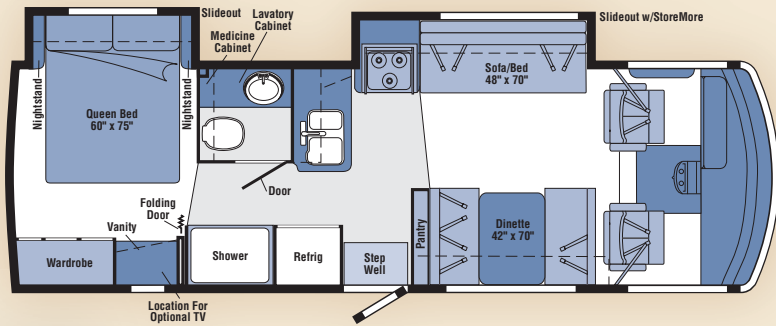
**WEB TRUELEVEL** Eliminate the guesswork when it comes to tank levels with our exclusive TrueLevel™ holding tank monitoring system. It incorporates detector cells that read liquid levels from outside the tank. No probes means no more corrosion or clogging, just accurate readings time after time.

Carpet
  Vinyl Floorcovering
  Seat Belts

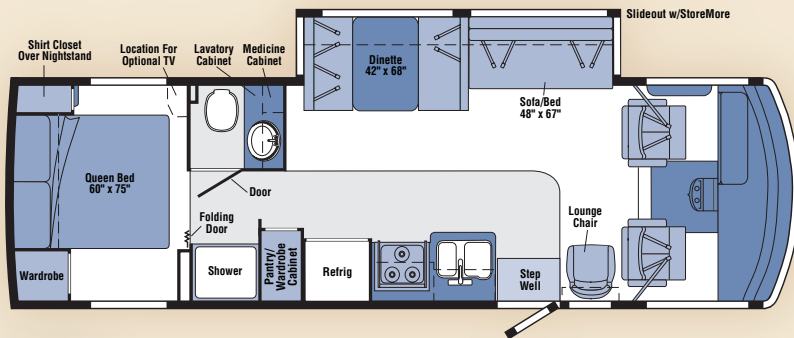
Note: Dimensions shown are for sleeping space only and may vary due to styling differences. Dashed lines denote overhead storage areas.



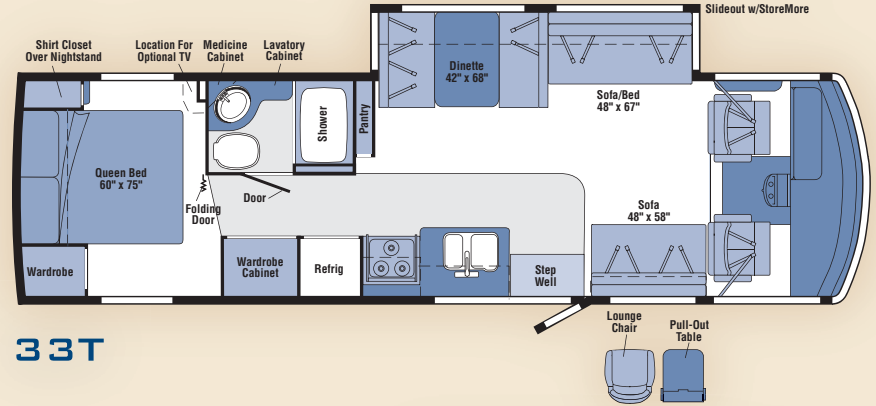
**26P**



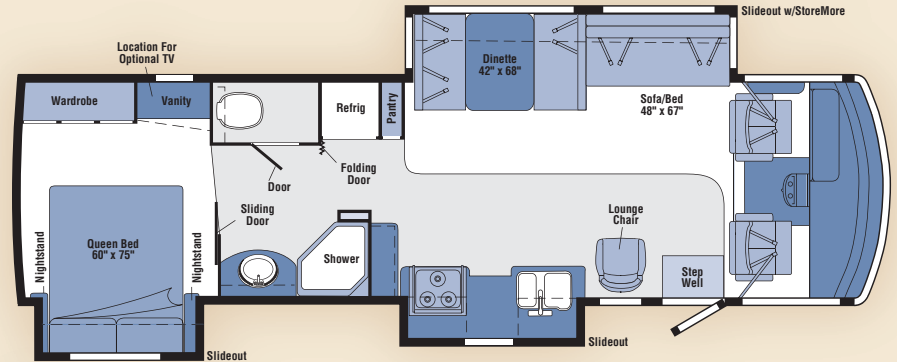
**29R**



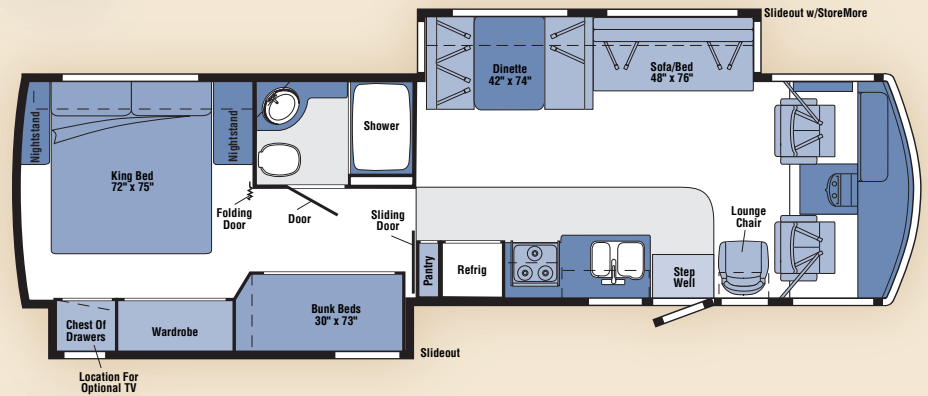
**30B**



**33T**



**34A**



**35J**  
NEW

WEIGHTS & MEASURES	26P	29R	30B	33T	34A	35J NEW
<b>Length</b>	26'11"	29'8"	31'0"	33'11"	34'6"	35'2"
<b>Exterior Height<sup>1</sup></b>	12'1"ⓐ	12'1"ⓐ / 12'3"ⓐ	12'2"ⓐ / 12'2"ⓐ	12'3"ⓐ / 12'3"ⓐ	12'3"ⓐ / 12'3"ⓐ	12'3"ⓐ / 12'3"ⓐ
<b>Exterior Width<sup>2</sup></b>	8'5.5"	8'5.5"	8'5.5"	8'5.5"	8'5.5"	8'5.5"
<b>Exterior Storage<sup>3</sup> (cu. ft.)</b>	67.3	81.2	126.2	104.8	98.9	107.5
<b>Awning Length</b>	11'6"	16'	16'	18'	18'	16'
<b>Interior Height</b>	6'8"	6'8"	6'8"	6'8"	6'8"	6'8"
<b>Interior Width</b>	8'0.5"	8'0.5"	8'0.5"	8'0.5"	8'0.5"	8'0.5"
<b>Freshwater Capacity<sup>4</sup> w/Heater (gal.)</b>	67	75	74	74	72	72
<b>Holding Tank Capacity<sup>4</sup> - Black/Gray (gal.)</b>	39 / 36	37 / 41	41 / 57	41 / 57	41 / 57	44 / 48
<b>LP Capacity<sup>5</sup> (gal.)</b>	18	18	18	18	18	18
<b>Fuel Capacity</b>	60	75	75	75	75	75
<b>GCWR<sup>6</sup> (lbs.)</b>	22,000ⓐ	26,000ⓐ / 22,000ⓐ	26,000ⓐ / 22,000ⓐ	26,000ⓐ / 22,000ⓐ	26,000ⓐ / 26,000ⓐ	26,000ⓐ / 26,000ⓐ
<b>GVWR (lbs.)</b>	16,000ⓐ	18,000ⓐ / 18,000ⓐ	18,000ⓐ / 18,000ⓐ	20,500ⓐ / 18,000ⓐ	20,500ⓐ / 20,700ⓐ	20,500ⓐ / 20,700ⓐ
<b>GAWR - Front (lbs.)</b>	6,500ⓐ	7,000ⓐ / 7,000ⓐ	7,000ⓐ / 7,000ⓐ	7,500ⓐ / 7,000ⓐ	7,500ⓐ / 7,500ⓐ	7,500ⓐ / 7,500ⓐ
<b>GAWR - Rear (lbs.)</b>	10,500ⓐ	11,000ⓐ / 12,000ⓐ	11,000ⓐ / 12,000ⓐ	13,500ⓐ / 12,000ⓐ	13,500ⓐ / 13,500ⓐ	13,500ⓐ / 13,500ⓐ
<b>Wheelbase</b>	159"	190"	190"	208"	228"	228"

AUTOMOTIVE/CHASSIS	26P	29R	30B	33T	34A	35J
ⓐ <b>Ford</b> ® 6.8L SOHC Triton® V10 362-hp, TorqShift™ 5-speed automatic overdrive transmission, hydraulic brakes, 4-wheel ABS, 130-amp. alternator	S	S				
ⓑ <b>Ford</b> 6.8L SOHC Triton V10 362-hp, TorqShift 5-speed automatic overdrive transmission, hydraulic brakes, 4-wheel ABS, 130-amp. alternator				S	S	S
ⓒ <b>Workhorse</b> ™ W-Series 8.1L Vortec V8 340-hp, 4L85-E 4-speed overdrive transmission, hydraulic brakes, 4-wheel ABS, 145-amp. alternator	S					
ⓓ <b>Workhorse</b> W-Series 8.1L Vortec V8 340-hp, 4L85-E 4-speed overdrive transmission, hydraulic brakes, 4-wheel ABS, 145-amp. alternator	0	0	0			
ⓔ <b>Workhorse</b> W-Series 8.1L Vortec V8 340-hp, Allison® 6-speed overdrive transmission, hydraulic brakes, 4-wheel ABS, 145-amp. alternator					0	0
<b>Trailer Hitch</b> ® 5,000-lb. drawbar/500 lbs. maximum vertical tongue weight & wiring w/7-pin connector, <b>Wheelcovers (4)</b>	S	S	S	S	S	S
<b>Leveling Jacks</b> hydraulic, automatic controls w/3-way, 1-touch system, <b>Kwikkee</b> ® <b>Wheel Liners</b> stainless steel	0	0	0	0	0	0

CAB AREA & DRIVER CONVENIENCES	26P	29R	30B	33T	34A	35J
<b>Beverage Holder</b> passenger side, <b>Cab Seats (Fabric)</b> w/3-point shoulder & lap seat belts w/retractors, armrests, lumbar support (fixed), multiadjustable slide/recline & swivel, <b>Convenience Tray</b> w/cupholders, <b>Cruise Control</b> , <b>Map Lights</b> , <b>Map Pocket</b> , <b>Powerpoint 12-Volt DC/Cigarette Lighter</b> , <b>Receptacle AC duplex</b> , <b>Steering Wheel</b> tilt w/power-assist, <b>Trim Panel</b> driver side w/cupholder, storage tray, <b>Windows</b> (driver & passenger) partial slider w/screen, <b>Windshield Wipers</b> intermittent	S	S	S	S	S	S
<b>Cab Seats</b> UltraLeather,™ <b>Defroster Fans (2)</b> auxiliary 2-speed w/instrument panel switch, <b>Monitor System</b> b/w rearview w/single camera & 1-way audio, <b>Audiovox</b> ® <b>Video Camera System</b> side-mounted cameras	0	0	0	0	0	0

ENTERTAINMENT	26P	29R	30B	33T	34A	35J
<b>RV Radio</b> ® (Cab) AM/FM Stereo/CD, speakers (4), weather band, remotes (2) handheld & steering wheel mounted, <b>C.B. Wire Prep</b> , <b>Radio Antenna</b> roof-mounted, rubber, <b>Radio Power Switch</b> main/aux. battery, <b>Satellite System Ready</b> , <b>TV 24"</b> color AC stereo w/remote (front cabinet), <b>TV Enhancement Package</b> antenna (amplified), 12-volt DC powerpoints, interior jacks, exterior jack, coax wiring, cable input, splitter, <b>Video Selection System</b>	S	S	S	S	S	S

ENTERTAINMENT	26P	29R	30B	33T	34A	35J
<b>DVD</b> w/remote, <b>Entertainment Center (Exterior)</b> w/CD player, DC receptacle, AC duplex receptacle, AM/FM radio, radio antenna, speakers (2), lockable compartment, removable TV table, <b>Satellite Dish Antenna</b> RV digital, manual, <b>Home Theater Sound System</b> amplifier, DVD, receiver, recessed speakers (5), subwoofer, <b>Satellite Radio</b> Sirius®, antenna, wiring, receiver, includes 6-month subscription (NA Canada)	0	0	0	0	0	0
<b>DVD w/7" LCD Screen (2)</b> bunk area, headphones, remotes & AV ports						0
<b>TV 13"</b> color DC w/remote (bedroom), shelf			0	0		
<b>TV 19"</b> color AC w/remote (bedroom)	0	0			0	0

INTERIOR	26P	29R	30B	33T	34A	35J
<b>Blinds</b> mini (lounge, dinette, & galley), <b>Ceiling</b> fabric, <b>Countertops</b> laminate, <b>Curtain</b> wraparound w/track (front), <b>Lights</b> reading, adj. halogen (overheads), <b>Lights</b> (ceiling) incandescent w/wall switches, <b>Roof Vent</b> non-powered (lounge), powered (bath), <b>Shades</b> pleated (bedroom), <b>Telephone Input</b> interior jack (bedroom or dinette area)	S	S	S	S	S	S
<b>Wainscoting w/chair rail</b>	S		S	S	S	S
<b>Roof Vent</b> powered, ventilator fan, lounge, <b>Shades</b> day/night pleated (lounge, dinette, & bedroom), <b>UltraLeather Upgrade Package</b> cab seats, sofa, lounge chair, <b>Windows</b> dual-glazed/thermo-insulated/flush-mounted	0	0	0	0	0	0

FURNITURE	26P	29R	30B	33T	34A	35J
<b>Dinette</b> w/access to storage below, cupholders	S	S	S	S	S	S
<b>Sofa</b> w/storage below, tables (2) shelves behind sofa (2)	0					
<b>Sofa(s)</b> w/storage below, throw pillow(s)		S	S	S	S	S
<b>Sofa (UltraLeather)</b>				0		
<b>Lounge Chair</b> hoop-base, swivel/glider, cabinet w/table, magazine rack				0		
<b>Lounge Chair</b> hoop-base, swivel/glider	S	S			S	S

GALLEY	26P	29R	30B	33T	34A	35J
<b>Faucet</b> single-control, Moen, <sup>®</sup> <b>Microwave Oven, Pantry, Range Hood</b> vented w/light & fan, <b>Range Top</b> 3-burner w/pot & pan drawer, <b>Receptacle(s)</b> duplex, <b>Refrigerator/Freezer</b> double-door	S	S	S	S	S	S
<b>Countertop</b> w/flip-up extension	S	S	S	S		S
<b>Galley Upgrade Package</b> range cover, silverware tray, woodgrain raised-panel refrigerator door insert, dinette storage wire baskets, <b>Microwave/Convection Oven, Range</b> 3-burner (1 high-output) w/oven	0	0	0	0	0	0

BATH	26P	29R	30B	33T	34A	35J
<b>Cabinets</b> lavatory, medicine, <b>Faucet (Lavatory)</b> dual-control, <b>Faucet (Shower)</b> dual-control w/flexible showerhead, <b>Light</b> shower, <b>Shower Door</b> textured glass, <b>Shower Skylight</b>	S	S	S	S	S	S

BEDROOM	26P	29R	30B	33T	34A	35J
<b>Bedsread</b> pillow shams, pillows, throw pillow, <b>Lights</b> decorative wall lamps	S	S	S	S	S	S
<b>Bed</b> queen, Serta <sup>®</sup> innerspring w/underbed storage	S	S			S	
<b>Bed</b> queen, Serta innerspring, <b>Headboard</b>			S	S		
<b>Bed</b> king, innerspring w/underbed storage						S
<b>Bunk Beds</b> w/drawer below, privacy curtain, mattress covers, pillows & shams, storage pockets						S

EXTERIOR	26P	29R	30B	33T	34A	35J
<b>Awning Rails</b> w/rain gutters, <b>Door</b> entrance w/separate screen door, deadbolt lock, <b>Entrance Door Steps</b> double, electric w/doorjamb switch, <b>Exterior Light</b> porch w/interior switch, <b>Fuel Fill Door, Mirrors</b> manual adjust w/convex, <b>Mudflaps</b> front, <b>Receptacle</b> AC duplex (passenger side storage compartment w/QuickPort <sup>®</sup> ), <b>Sidewall Skin</b> 1-piece smooth fiberglass, <b>Storage Compartments</b> valance panels, gas strut, single-paddle latch, lights, trunk liner, TriMark <sup>®</sup> KeyOne <sup>™</sup> System (NA large rear storage door on 30B & 33T)	S	S	S	S	S	S
<b>Awning</b> patio, <b>Ladder, Mirrors</b> electric/remote w/defrost, <b>Sidewall Skin</b> premium high-gloss Vetrolite <sup>®</sup>	0	0	0	0	0	0

SYSTEMS	26P	29R	30B	33T	34A	35J
<b>HEATING/AC – Automotive Heater/Air Conditioner</b> blend air system	S	S	S	S	S	S
<b>Air Conditioner</b> (roof) 14,800 BTU, ceiling-ducted w/wall thermostat, <b>Furnace</b> 30,000 BTU, low-profile, ducted in-floor, <b>Generator</b> 4,000-watt, Onan <sup>®</sup> MicroQuiet <sup>™</sup> gas	S	S	S			
<b>Air Conditioners (2)</b> (roof) high-efficiency, ceiling-ducted w/wall thermostat – includes <b>PowerLine<sup>®</sup></b> energy management system, <b>Generator</b> 5,500-watt, Onan <sup>®</sup> Marquis Gold <sup>™</sup> gas				S	S	S
<b>Furnace</b> 35,000 BTU, low-profile, ducted in-floor				S		
<b>Furnace</b> 40,000 BTU, low-profile, ducted in-floor					S	S
<b>Air Conditioner w/Heat Pump</b> (roof) 14,800 BTU, ceiling-ducted w/wall thermostat	0	0	0			
<b>Air Conditioners w/Heat Pump (2)</b> (roof) high-efficiency, ceiling-ducted w/wall thermostat – includes <b>PowerLine<sup>®</sup></b> energy management system				0	0	0
<b>Inverter</b> DC/AC, 300-watt	0	0	0	0	0	0
<b>ELECTRICAL – Auxiliary Start Circuit, Batteries (2) (Coach)</b> Group 24 deep-cycle, <b>Battery (Coach)</b> disconnect system, <b>Dual Battery</b> charge control (automatic), <b>Electrical Distribution System</b> AC breaker panel, DC fuses, 45-amp. converter/charger (26P, 29R, & 30B only), AC & DC breaker panels, 45-amp. converter/charger (33T, 34A, & 35J), <b>Generator Prep Kit, OnePlace<sup>®</sup> Systems Center</b> wall-mounted, energy management display (33T, 34A, & 35J only), battery condition gauge, generator hourmeter gauge, generator start/stop switch, heating & A/C thermostat, holding tank levels, LP tank level, water heater lights, water heater switch, water pump switch, water tank level, <b>Power Cord</b> 30-amp.	S	S	S	S	S	S
<b>PLUMBING/LP – Service Center</b> city water hookup/tank diverter fill, drainage valves, QuickPort service connection hatch, cable TV input, power cord, portable satellite hookup, sewer hose 10', telephone input, <b>Tank</b> holding, heated compartment, <b>Tank</b> LP, permanent mount w/gauge, <b>TrueLevel<sup>™</sup> Holding Tank Monitoring System, Water Heater</b> 6-gallon, electronic ignition, LP gas, <b>Water Pump</b> demand, <b>Water System Winterization Package</b> water heater bypass valve, siphon tube	S	S	S	S	S	S
<b>Wash Station</b> exterior w/pump switch located in service center, <b>Water Heater</b> 6-gallon, electronic ignition/110 VAC/LP w/motoraid & aux. auto heater, includes energy management system (26P, 29R, 30B)	0	0	0	0	0	0

SAFETY	26P	29R	30B	33T	34A	35J
<b>Assist Handle</b> exterior, <b>Assist Bar</b> interior, <b>Bumpers</b> front & rear, <b>Child Seat Tether Anchor, Detectors/Alarms</b> LP leak, smoke, carbon monoxide, <b>Fire Extinguisher</b> 10 BC, <b>Ground Fault Interrupter, Brakelamp</b> high-mount, <b>Seat Belts</b> cab, 3-point, <b>Seat Belts</b> lap (in selected areas), <b>Window</b> escape, <b>Windshield</b> laminated safety glass	S	S	S	S	S	S

WARRANTY <sup>7</sup>	26P	29R	30B	33T	34A	35J
<b>12-month/15,000-mile basic warranty<sup>8</sup></b>	S	S	S	S	S	S
<b>36-month/36,000-mile limited warranty on structure<sup>9</sup>, 10-year limited parts &amp; labor warranty on roof skin<sup>9</sup></b>						

- The height of each model is measured to the top of the tallest standard feature and is based on the curb weight of a typically equipped unit. The actual height of your vehicle may vary by several inches depending on chassis or equipment variations. Please contact your dealer for further information.
- Sunova floorplans feature a wide-body design – over 96". In making your purchase decision, you should be aware that some states restrict access on some or all state roads to 96" in body width. Before making your purchase decision, you should confirm the road usage laws in the states of interest to you.
- The load capacity of your motor home is designated by weight, not by volume, so you cannot necessarily use all available space when loading your motor home.
- Capacities are based on measurements prior to tank installation. Slight capacity variations can result due to installation applications.
- Capacities shown are tank manufacturer's listed water capacity (W.C.). Actual filled LP capacity is 80% of listing due to overfilling prevention device on tank.
- Actual towing capacity is dependent on your particular loading and towing circumstances which includes the GVWR, GAWR, and GCWR as well as adequate trailer brakes. Please refer to the Operator's Manual of your vehicle for further towing information.
- See separate chassis warranty.
- See your dealer for complete warranty information.

NA Not Available  
S Standard  
0 Optional

Not all items available in combination. See dealer for details.

Winnebago Industries<sup>®</sup> continuing program of product improvement makes specifications, equipment, model availability, and prices subject to change without notice. Comparisons to other motor homes are based on the most recent information available at printing.

## INTERIOR DECOR

Choose from three fabric selections and two wood choices with satin nickel and chrome hardware.

SOFA	ULTRA LEATHER	ACCENT
		CARPET



Cinnabar w/available Buff UltraLeather



Winter Wheat w/available Papyrus UltraLeather



Neptune w/available Papyrus UltraLeather™



Portsmouth Oak



Sierra Maple



## STANDARD GRAPHICS



Medium Parchment w/Gold/Brown/Moss Green



Medium Parchment w/Blue/Burgundy/Gold/Ivy Green

## AVAILABLE DELUXE GRAPHICS



Metallic Gold



Light Bronzermist Metallic

Welcome to Winnebago Industries, Inc.  
<http://www.winnebagoind.com/>

Winnebago  
PRODUCTS RESOURCES COMPANY CLUBS/EVENTS CONTACT DEALERS ONLY [NEW! Construction Features](#)

Back to our regular time share site

Popular Links  
→ Winnebago RVs  
→ Motor RVs  
→ Key Features  
→ Dealer Locator

The 2007 coaches have arrived.

WINNEBAGO INDUSTRIES' FEATURED PRODUCTS

Winnebago  
the 2007  
TRUCK  
Cape®

TRU-TECH  
Grade 42% Polymer,  
White 100% Urethane

SIRIUS  
Available Sirius Satellite Radio.  
TM, ©2006.

WINNEBAGOIND.COM Visit us on the web for more info on all of our motor homes and a host of web-exclusive content.

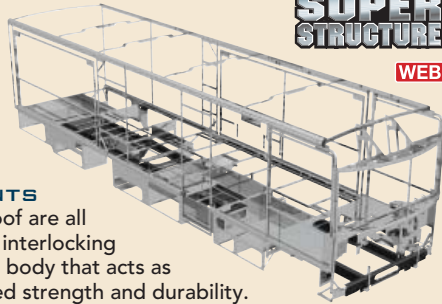


**BUILT BY WINNEBAGO INDUSTRIES.  
BUILT TO LAST.**

Itasca motor homes are built by Winnebago Industries, the company that defined motor homes. The company that built its reputation on quality construction. The company that transformed the motor home concept into a way of life.

Today, Winnebago Industries brings that reputation for quality and its 48-year history of motor home innovation to the design and construction of every motor home. It's all a part of SuperStructure® our exclusive system of proprietary structural components that instills each motor home with improved strength and durability.

**SOLID FOUNDATION** Steel and aluminum truss work provides a solid, flat foundation for floors and sidewalls. Winnebago Industries engineers also take special care to distribute the weight of components to ensure proper handling and stability.



**INTERLOCKING JOINTS**

The floors, sidewalls and roof are all integrally connected using interlocking joints. This creates a coach body that acts as a cohesive unit for improved strength and durability.

**E-COATING** Winnebago Industries employs an exclusive 12-stage automotive-style dip tank process to apply an advanced electrodeposition coating on critical steel components for unmatched corrosion protection.

**THERMO-PANEL® SIDEWALLS** Invented by Winnebago Industries, Thermo-Panel construction combines a fiberglass panel, high-density, block-foam insulation and aluminum support structures to create some of the most durable, lightweight sidewalls in the industry.

**ATTENTION TO DETAIL** Whether it's sending every coach through a high-pressure water tunnel to check for leaks or labeling each individual wire and bar-coding parts to save time and frustration during service, Winnebago Industries considers every detail to ensure your Itasca motor home provides you with years of pleasure.

**STRONG AS STEEL** Appliances are secured directly to embedded steel plates for added safety. Windshields are also mounted in steel with an automotive-style sealant; lesser designs use a rubber gasket to mount the windshield in fiberglass.



1-year-old Itasca fiberglass roof



1-year-old competitor's rubber roof

**FIBERGLASS ROOF** The Sunova features a crowned, one-piece fiberglass roof, backed with a 10-year limited parts-and-labor roof skin warranty. Fiberglass offers superior strength, attractiveness and durability over the rubber roofs found on many competitive models which can chalk, streak and degrade over time. Fiberglass also provides increased puncture and tear resistance.



**TAKE A TOUR** We're proud of our process, state-of-the-art facilities and the people who make Winnebago Industries number one. We invite you to visit our factory in Forest City, Iowa, for a first-hand look at the dedication and technology behind every motor home we build.



**RECOGNIZED QUALITY** The Recreation Vehicle Dealer Association annually rates RV manufacturers and awards the Quality Circle award to manufacturers who provide exceptional products, service and support. Winnebago Industries is proud to be the only manufacturer to receive this award every year since its inception.



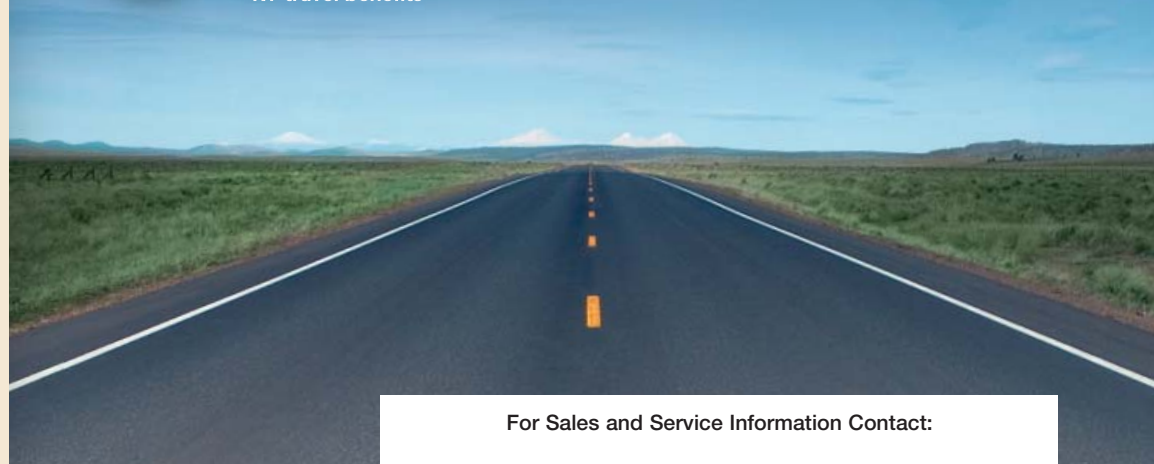
**COMMITTED TO SERVICE** We back our motor homes with the industry's best service after the sale.

- 12-month/15,000-mile basic limited warranty
- 36-month/36,000-mile limited warranty on structure
- Standard 10-year limited parts-and-labor roof skin warranty
- Complimentary 24-hour roadside assistance program
- TripSaver Fast Track Parts. TripSaver guarantees that in-stock warranty parts ship directly to your dealer within 24 hours.
- National dealer service network



**WIT CLUB** Itasca owners are like family. Joining the Winnebago-Itasca Travelers is a great way to meet and travel with other Itasca enthusiasts. Members enjoy:

- Caravans and rallies
- Local and state group activities
- RV travel benefits



For Sales and Service Information Contact:



Built proudly by



NYSE listing: WGO

©2006 Winnebago Industries, Inc.

Printed in USA

Seat belts are your most important hookup. Always buckle up.