

GEARBOX

GEARBOX®

THE ULTIMATE TOY HAULER

IT'S WHAT YOU'RE INTO



FUEL

TRAVEL TRAILERS AND FIFTH WHEELS

LOADED WITH STANDARD FEATURES | INNOVATIVE FLOOR PLANS | HEAVY-DUTY RAMP DOOR | ROCK-SOLID!™ CONSTRUCTION | COOL INTERIORS



ROCK THE BOX II™ SOUND SYSTEM (optional) includes 11 speakers (including a huge sub woofer) which provide awesome sound that will definitely wake the neighbor's dog.



BUILT-IN LCD TV (optional) so you can watch the X Games, MTV or even the gardening channel (although your friends may ridicule you all weekend).



OVERHEAD STORAGE throughout GearBox provides an easy way to store kitchen essentials or helmets and gear.



THE FULL EXTENSION DRAWERS slide out all the way so you can easily access items in the back.

ALL TRICKED OUT AND READY TO ROLL.

GearBox is the ultimate toy hauler, loaded with awesome features. The bells and whistles our competitors call optional, we call standard. Some models feature slide-outs, so you have more space to hang with your buddies. Let the good times roll in the one and only GearBox!



GearBox 300FS shown in Sahara interior with Plantation Cherry wood finish.



EXTENSION
smoothly
the way so
easily reach
back.



THE FULL SIZE SINK
is a great place to wash your hands before dinner. The bathroom also features a shower and toilet. Some models include removable wire baskets under the sink.



REAR BED WITH ROLLOVER SOFA
lets you change your view with your mood. Face the inside of the GearBox, the outside, or the ceiling (when you flatten the sofa to get some sleep).



THE MASTER BEDROOM
provides some private shut-eye space with a relaxing queen-size bed.
(Bedspread available on select models)

RIDE. CHILL. CRASH. REPEAT.

After you spike your adrenaline on your quad, bike, jet ski or wakeboard, you can chill with a cold one back in your GearBox. The cabinets are sleek, the vibe is cool, and the upholstery is embroidered with the GearBox logo. But this bling can take a beating – it can handle the mud, dusty boots and spilled drinks, and still clean up nice. When it's time to crash, there's sleeping space for up to 10 old and new friends, depending on the model.



THE GALLEY is decked out with a refrigerator, 3-burner range, oven and microwave. A solid surface countertop surrounds the double-bowl sink. It holds twice as many dirty dishes — because who wants dishpan hands?

ROCK-SOLID!™ CONSTRUCTION

You live hard and play hard. So we built GearBox tough to stand up to what you dish out.



Drawing is for illustrative purposes only to highlight aspects of GearBox construction. Actual RV design depends on model and is subject to change.

- HIGH GLOSS FIBERGLASS SIDING** - This durable and glossy surface is easy to clean, and adds beauty and structural integrity.
- FIBERGLASS FRONT CAP** - Improves aerodynamics and styling.
- 2" x 2" ALUMINUM SIDEWALL STUDS** - Keeps weight down while providing structural integrity to the wall.
- SOLID BLOCK EPS INSULATION** - Expanded polystyrene provides additional strength and durability.
- WOOD SUBSTRATE** - Adds structural reinforcement to the exterior fiberglass panel.
- INTERIOR WALL PANEL** - Features a durable, easy-to-clean, decorative finish.
- 2" x 3" FLOOR JOISTS** - Provide strong floor construction while allowing for the placement of in-floor furnace ducting.
- ENGINEERED 5/8" OSB FLOORING** - Provides the dependable decking needed to ensure an adequate foundation. Further stability is added by interlocking these sheets using tongue and groove construction.
- DURABLE VINYL FLOORING** - From the best name in residential flooring.
- UNDERBELLY** - Is a durable weather barrier.
- R11 FIBERGLASS INSULATION IN CEILING** - As in your home, helps to ensure interior comfort in every season.
- ENGINEERED RADIUSED CEILING TRUSS** - Helps to ensure strength and water runoff.
- ENGINEERED OSB ROOF SUBSTRATE** - Is designed to maximize strength, is sealed to ensure moisture resistance and provides a solid backbone for the synthetic rubber roof construction.
- ONE-PIECE SEAMLESS SYNTHETIC RUBBER ROOF MEMBRANE** - Provides the ideal weather seal and is warranted for 12 years.
- REINFORCED CAMBERED STEEL CHASSIS** - Provides optimal strength, durability, and performance.
- DUCTED IN-CEILING AIR CONDITIONING** - Efficiently distributes cool air.



RAMP DOOR SCREEN

(available) pulls down with one hand to keep the flying critters out and let the breeze in. It sports the GearBox logo that can be seen by your envious neighbors, but doesn't obstruct your outward view. How did they do that?



AIR COMPRESSOR

(optional) is perfect for inflating dirt bike tires or balloon animals. (Be the life of the party! Impress your friends!)



PASS-THROUGH STORAGE is where you put the XXL stuff like camp chairs, awning mat, BBQ, firewood and gear bags.



THE FUELING STATION (optional) lets you gas up and ride off fast. With dual tanks, you can lose the jugs!



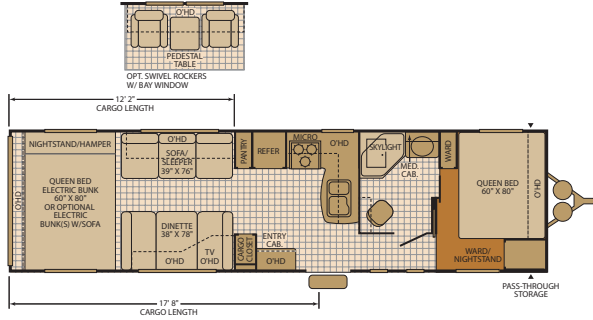
THE RAMP EXTENSION makes it easier to load your toys with this heavy-duty diamond-plate panel that flips over to cover the lip of the ramp door.



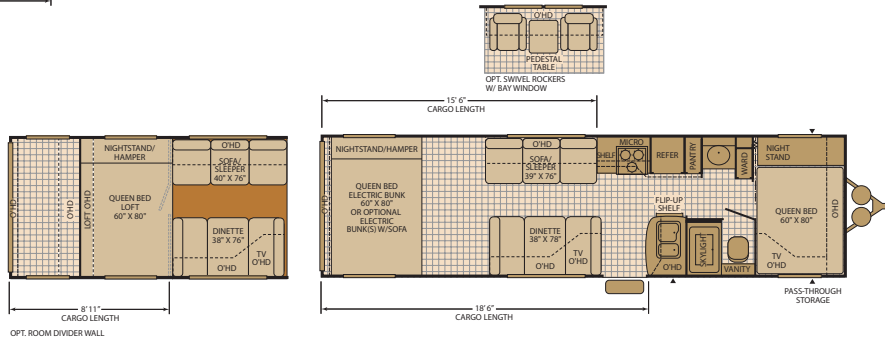
ALUMINUM INTERIOR/ EXTERIOR WORK BENCH (optional), is the best spot for keeping your tools and refreshments within easy reach.

TRAVEL TRAILER FLOOR PLANS

290SA Sleeps 6-8*



300FS Sleeps 6-8*



EXTERIOR FEATURES

- HEAVY DUTY RAMP** is rated for 3,500 pounds, with its "beavertail" departure angle, extra-long length and integrated locks, loading and unloading is almost fun.
- HIGH GLOSS GEL COAT FIBERGLASS SIDEWALLS** are laminated with aluminum framing to provide a great looking, tough outer shell.
- AERODYNAMIC FRONT CAP** is made of molded fiberglass and makes other toy haulers look lame in comparison.
- WEATHER-RESISTANT SPEAKERS** win the stereo wars every time.
- WHEEL WELLS** don't take up precious storage space in the cargo area. Our competitors wish they had thought of this.
- AIR CONDITIONING** ducts are in the ceiling spreading cool air to all corners of GearBox to help you chill out fast.



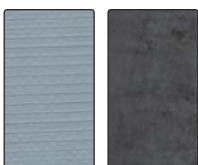
GEARBOX INTERIOR DÉCOR CHOICES

BLUE STEEL

Living Room



Bedroom Room

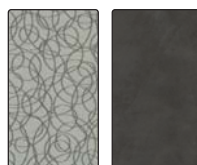


OBSIDIAN

Living Room

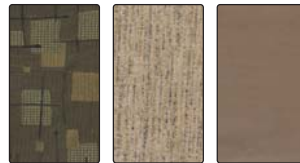


Bedroom Room

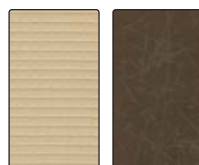


SAHARA

Living Room



Bedroom Room

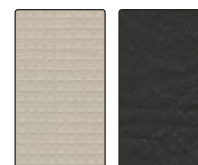


SHADOW

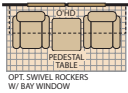
Living Room



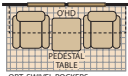
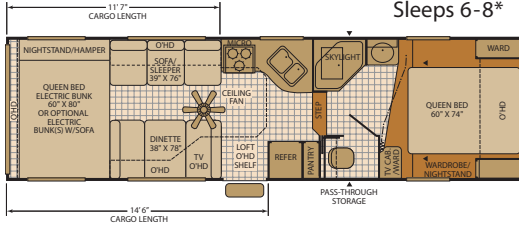
Bedroom Room



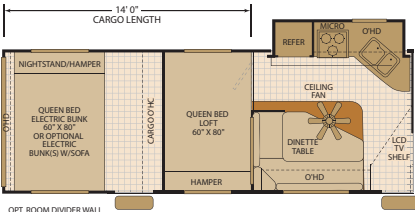
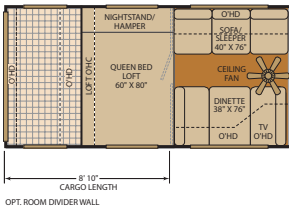
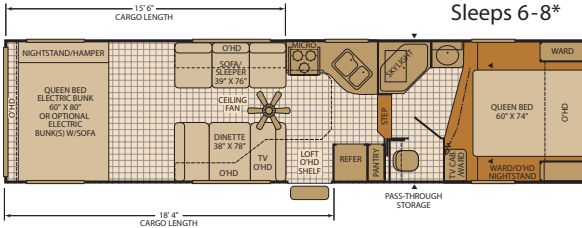
FIFTH WHEEL FLOOR PLANS



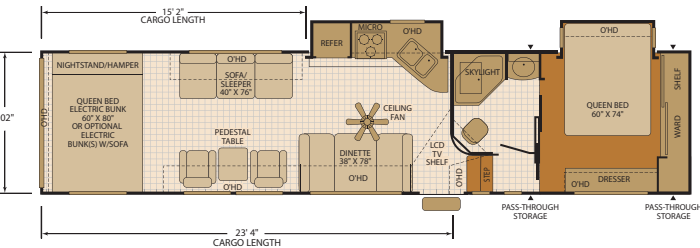
295FS
Sleeps 6-8*



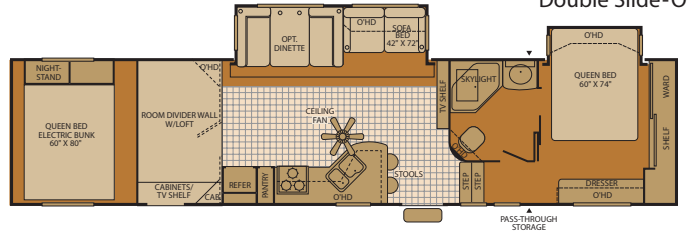
335FS
Sleeps 6-8*



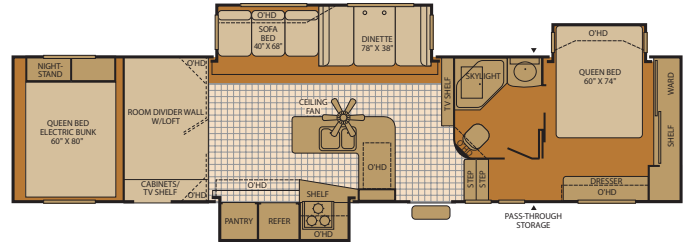
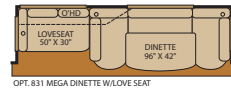
375SA2G**
Sleeps 6-8*
Double Slide-Out



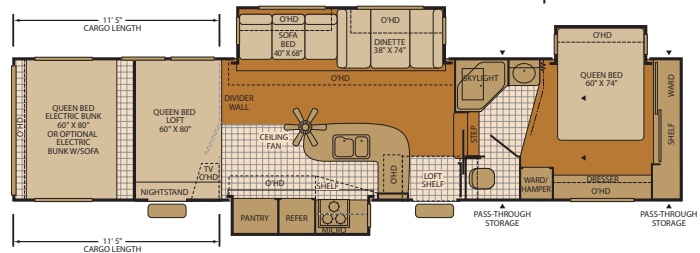
385SA2G**
Sleeps 8-10*
Double Slide-Out



395SA3G**
Sleeps 8-10*
Double Slide-Out



395FS3G
Sleeps 8-10*
Triple Slide-Out



▲ = Exterior storage

*Sleeping capacity is a variable number and is affected by items such as size of occupant, options and floor plan. Some models are not available in all areas of the country. Please see your local dealer for model availability.

**Features a full 102" exterior width.

TRAVEL TRAILERS

FIFTH WHEELS

GEARBOX	290SA	300FS	295FS	335FS	375SA2G	385SA2G	395SA3G	395FS3G
WEIGHTS								
GVWR (lbs) ¹	14,500	14,000	13,800	14,300	17,000	17,200	17,500	17,500
Gross Dry Weight (lbs) ^{2,6}	7,862	7,960	8,250	8,580	10,667	11,750	TBD	12,570
Cargo Carrying Capacity (lbs) ^{3,6}	6,618	6,040	5,550	5,720	6,333	5,450	TBD	4,930
Hitch Dry Weight (lbs) ^{2,6,9}	1,151	1,280	1,980	2,120	2,346	2,220	TBD	2,860

DIMENSIONS & CAPACITIES

Length (Feet & Inches) ^{4,6,8}	35' 0"	33' 1"	31' 5"	35' 3"	37' 11"	39' 11"	39' 11"	39' 11"
Height (Feet & Inches) ^{5,6}	12' 2"	12' 2"	12' 9"	12' 9"	13' 5"	13' 5"	13' 5"	13' 5"
Fresh Water Holding Tank (gal) ^{6,7}	120	120	120	120	120	120	120	120
Grey Water Holding Tank (gal) ^{6,7}	55	55	55	55	55	80	80	55
Black Water Holding Tank (gal) ^{6,7}	40	40	40	40	40	40	50	40
Propane Capacity (lbs) ^{6,7}	60	60	60	60	60	60	60	60
Tire Size (Load Range)	ST225/ 75R15(D)	ST225/ 75R15(D)	ST235/ 80R16(D)	ST235/ 80R16(D)	ST235/ 80R16(D)	ST235/ 80R16(D)	ST235/ 80R16(D)	ST235/ 80R16(D)

GEARBOX – FEATURES

INTERIOR – Throughout

- 15,000 BTU Air Conditioner
- Commercial Grade Vinyl Flooring
- Flush Floor Cargo Tie Downs
- Sidewall Located Cargo Tie Downs
- 10 Gallon Propane Water Heater with Direct Spark Ignition
- Full Systems Monitor Panel
- Hydro Flame[®] Forced Air Furnace with Direct Spark Ignition
- Large Overhead Cargo Cabinets
- Ceiling Fan w/Lights (Fifth Wheel Models)
- Whole Coach Water Filtration System
- Electric 12V Rear Bunk with Queen Mattress, Bunk Ladder & Privacy Curtain
- Residential Carpet Kit

LIVING ROOM

- Solid Window Valances and Lambrequins
- Night Shades
- Built-In TV Compartment or Shelf
- Fold-Away Dinette/Sleeper (Select Models)
- AM/FM/CD Stereo with 4 Speakers
- Cable TV Hookup
- Satellite Antenna Prep
- Décor Lighting
- Reading Lights

GALLEY

- Residential Style Solid Composite Galley Countertop with Integrated Double Bowl Sink
- Matching Composite Sink Lids
- 22" Oven with 3-Burner (1 High-Output) Range (Select Models)
- 8 cu. ft. Double Door Refrigerator
- Microwave with Electronic Touch Pad
- Microwave/Convection Oven (Select Models)
- Galley Cabinets with Adjustable Shelves
- Residential Style Metal Faucet with Hand Sprayer
- Adjustable Wire Pantry Baskets
- Cutting Board
- Fluorescent Lighting
- Halogen Accent Lighting (Select Models)
- Range Hood with 12V Light & Exhaust Fan
- Deluxe Paper Towel Holder

- Under Sink Waste Basket
 - Built-In Spice Shelf (Select Models)
 - Flip-Up Counter Extension (Select Models)
- BEDROOM**
- Queen Size Bed with Under Bed Storage (Select Models)
 - Overhead Storage Shelf w/His & Her Reading Lights
 - Black Out Bedroom Ceiling Vent (Select Models)
 - Night Shades

BATHROOM

- Residential Style Solid Composite Lavatory Countertop with Integrated Sink
- ABS Tub and Shower Walls
- Glass Tub and Shower Enclosure (Select Models)
- Porcelain Foot Pedal Toilet
- Clothes Hamper (Select Models)
- Removable Wire Baskets (Select Models)
- Towel Bars (2) & Ring
- Wardrobe with Ventilated Hanger & Shelving (Select Models)
- Medicine Cabinet with Mirrored Door & Adjustable Shelves
- Power Exhaust Roof Vent
- Skylight

SAFETY/CONVENIENCE

- Carbon Monoxide Detector/Alarm
- Fire Extinguisher
- Propane Detector/Alarm
- Smoke Detector/Alarm
- 12 Volt Disconnect
- RAM Air Vents
- Locking Storage Compartments
- Amber Patio Light
- 50 AMP Service
- 120V GFI Circuit Protection (Galley/Bath/Patio)
- Back-Up Lights
- Illuminated Light Switches at Entry/Cargo Door(s)
- Safety Glass Windows
- Triple Entry Step
- Entry Assist Grab Handle

EXTERIOR – THROUGHOUT

- 7' 2" Ramp Door with 3,500 lb. Rating, Integrated Locks, Protective Bumpers & Non-Skid Surface

- Drop Down Diamond Plate Ramp Extension
- Deep Tint Safety Glass Windows
- Heavy Duty Walk On Roof w/Cargo Rack and Ladder
- Custom Chrome Wheels w/FUEL Logo Center Caps
- Shock Absorbers
- Checkered Flag Patio Awning
- Exterior Shower
- Large Pass Through Storage
- Tank Flush System (Solid Tank)
- Dual 7 Gallon (30 lb) Propane Tanks with Sight Gauge
- E-Z Lube[®] Axles
- Ice Chest/Tool Box (Select Models)
- Low Pressure Propane Bib with Quick Release Fitting
- Propane Tank Cover (Travel Trailer Models)
- Fresh Water Tank Quick Drain Knife Valve
- R 11 Fiberglass Insulation (Ceiling)
- R 7 Fiberglass Insulation, (Floor, Front Section)
- Weather Resistant Exterior Speakers
- Exterior Washer with Pressurized Nozzle
- Base Camp Flood Lights (2)
- Pet/Toy Security Rings (2)
- Chassis Mount Spare Tire (Radial)
- TV Antenna
- Scissor Stabilizer Jacks

STORAGE

- Luggage Doors Radius Corner (Where Applicable)
- Carpeted Luggage Compartments
- Power Cord Storage

BODY STRUCTURE

- Cambered Chassis
- High Gloss Gel Coat Fiberglass Laminated Sidewalls with Welded Aluminum Frame
- Integrated Beavertail Departure Angle (Cargo Floor)
- Front Fiberglass Cap
- Rear Upper ABS Cap
- Full 102" Wide Enclosed Chassis (Select Models)

OPTIONS

INTERIOR – Throughout

- Huge LCD Flat Screen TV - Living Room
- Rock the Box II[™] Audio Entertainment System: Custom Designed 11 Speaker (Including 12" Sub Woofer) MP3 Ready Stereo System with Two Power Amplifiers and External Weather Resistant Controls
- Comfort Air Power Roof Vent
- LCD Flat Screen TV w/DVD Player - Master Bedroom
- Aluminum Interior/Exterior Work Bench
- Central Vacuum
- 13,500 BTU Secondary Air Conditioner
- Metal Storage Cabinet w/Logo (Select Models)
- Inverter with Battery Charger (Select Models)
- Dual Pane Windows with Deep Tint
- Upgraded Mattress
- Dual Electric Bunks with Fold-Over Sofa
- Swivel Rockers with Bay Windows
- Divider Wall with Door (Select Models)
- Deluxe Pillow Shams
- Cargo Netting

EXTERIOR – THROUGHOUT

- Aluminum Interior/Exterior Work Bench
- All New FUEL Amphitheatre[™] 7' x 7' Outside Movie Screen with Weather Resistant Video Hook Ups
- Electric Awning
- Retractable Ramp Door Screen Partition with Logo
- 5.5 kW Onan[®] Generator with Pump Station and Dual Tanks (30 & 18 Gal.)
- Generator Ready with Pump Station and Dual Tanks (30 & 18 Gal.)
- Integrated 3 Gal. 125 PSI Air Tank Compressor w/25 ft. Hose
- Exterior Spot Light
- Heated Holding Tanks
- 12V Power Tongue Jack
- All New Custom Aluminum Wheels
- All New Dual Camera Monitoring System

1. GVWR (Gross Vehicle Weight Rating) is the maximum permissible weight of this trailer when fully loaded. It includes all weight at the trailer axle(s) and tongue or pin.

2. All dry weights are based on the standard model and do not include optional features or equipment.

3. Cargo Carrying Capacity is determined by subtracting Gross Dry Weight from GVWR. Cargo includes all fluids, optional features, equipment, and personal cargo.

4. Length measured from hitch or pin box to rear bumper (excludes accessories). Trailer length includes hitch; fifth wheel includes standard pin box.

5. Actual height may be lower, based on option offerings. Consult with your dealer to obtain actual height for the unit you are interested in.

6. Approximate.

7. Water weight equals 8.3 lbs per gallon. Propane weight equals 4.2 lbs per gallon.

8. Hitch weights are dependent upon how the trailer is equipped with options, on-board cargo and tank fluid levels. Actual hitch weights may be higher or lower than shown. It is recommended that the tow vehicle and hitch for your trailer have sufficient capacity to accommodate the GVWR of the selected trailer. Toy Haulers are intended to have a concentrated load in the rear.

N/A = Not available at the time of printing.

TBD = To Be Determined.

Toy haulers feature a body width over 96" which will restrict your access to certain roads. Before purchasing, you should research any state and/or province road laws which may affect your usage.

IMPORTANT— PLEASE READ: Product information, photography and illustrations included in this publication were as accurate as possible at the time of printing. For further product information and changes, please visit our website at www.fleetwoodrv.com or contact your local Fleetwood dealer. Prices, materials, design and specifications are subject to change without notice. All weights, fuel, liquid capacities and dimensions are approximate. Fleetwood has designed its recreational vehicles to provide a variety of uses for customers. Each vehicle features optimal seating, sleeping, storage and fluid capacities. The user is responsible for selecting the proper combination of loads (i.e., equipment, fluids, cargo, etc.) to ensure that the vehicle's capacities are not exceeded.

WHY GEARBOX?



PASSION

We're truly passionate about the RV lifestyle. Fleetwood was founded by RV enthusiasts, and that tradition continues today.



QUALITY

There's no cutting corners. Skilled craftsmen build every Fleetwood RV for maximum durability and longevity.



WARRANTY

Exclusive RV Ownercare warranty. See your Fleetwood dealer for details.



SERVICE

Help is nearby. When you need an upgrade or repair, you'll find facilities all across North America and more than 1,100 dealers ready to assist you.



TRUST

More people trust Fleetwood. After all, we've spent over 50 years perfecting RVs, earning the loyalty of generations of RVers.

CONTACT US

To locate a dealer near you, visit our website at www.fleetwoodrv.com or call 1-800-444-4905. We can also be contacted at Fleetwood Customer Relations, P.O. Box 1007, Decatur, IN 46733.

FLEETWOOD TRAVELCADE CLUB

As a Fleetwood owner, you're eligible to become a member of the Fleetwood Travelcade Club. It's a perfect way to meet other Fleetwood owners who love to travel across America and share in the RV lifestyle. Call (877) 577-2560 or visit our website at www.fleetwoodrv.com/owners_clubs to learn more and join the fun!

RV OWNERCARE*

See your local dealer for complete details.

IMPORTANT—PLEASE READ

Product information, photography and illustrations included in this publication were as accurate as possible at the time of printing. For further product information and changes, please visit our website at www.fleetwoodrv.com or contact your local Fleetwood dealer. Prices, materials, design and specifications are subject to change without notice. All weights, fuel, liquid capacities and dimensions are approximate. Fleetwood has designed its recreational vehicles to provide a variety of uses for customers. Each vehicle features optimal seating, sleeping, storage and fluid capacities. The user is responsible for selecting the proper combination of loads (i.e.: equipment, fluids, cargo, etc.) to ensure that the vehicle's capacities are not exceeded.

Your Local Fleetwood Dealer Is:



*For complete info see your Fleetwood dealer.

TO OUR CUSTOMERS...

To make sure that you get the maximum satisfaction out of your recreational vehicle purchase, there are several things you should know:

1. Learn all you can about the travel trailer or fifth wheel you're planning to buy. Don't rely on word of mouth. Get the facts about the actual trailer length, width, unloaded weight with options, Gross Vehicle Weight Rating, and Cargo Carrying Capacity. These are usually available in the manufacturer's sales literature or from the Cargo Carrying Capacity Label located in each trailer. Be sure to check this information before you decide which unit to buy.
2. Verify the towing capacity of your tow vehicle. If you don't know, or aren't sure, you can ask at your automotive dealership. Be sure to match its tow rating to the loaded (not dry) weight of your trailer. Include the weight of water, additional accessories, clothing, food, and gear. To help Fleetwood travel trailer customers estimate this total weight, our Gross Vehicle Weight Ratings reflect the maximum weight of the trailer when fully loaded for camping. Be sure the weight of the tow vehicle plus the weight of your trailer do not exceed the Gross Combined Weight Rating of the tow vehicle.

Taking these simple steps before you buy will help ensure that your trailer and tow vehicle combination is just what you wanted.

See you on the trail!

treadlightly!
LEAVING A GOOD IMPRESSION



Fleetwood's Ultimate Extreme Line - brought to you by a group of dedicated RV professionals that understand and enjoy the toy hauler lifestyle as much as you do!

FLEETWOOD
Travel Trailer Division