

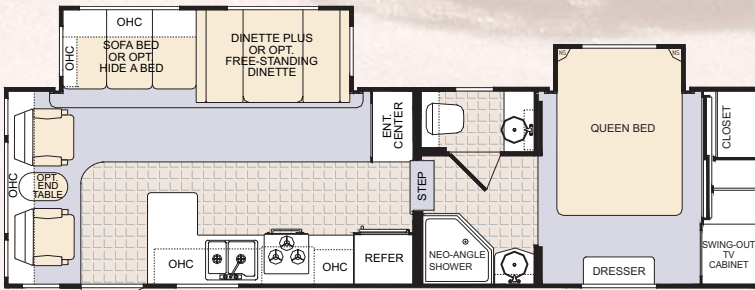
COLORADO

Travel Trailers and Mid-Profile Fifth Wheels

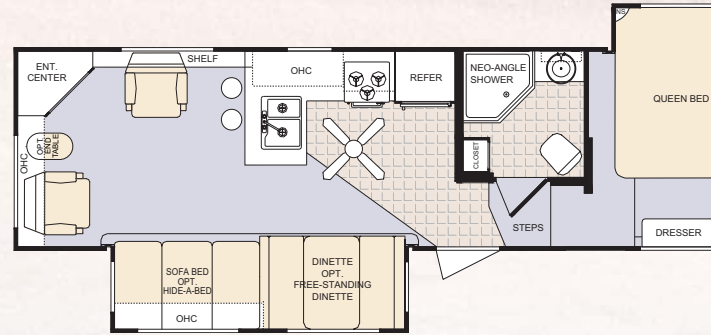


Begin Your Adventures With Colorado

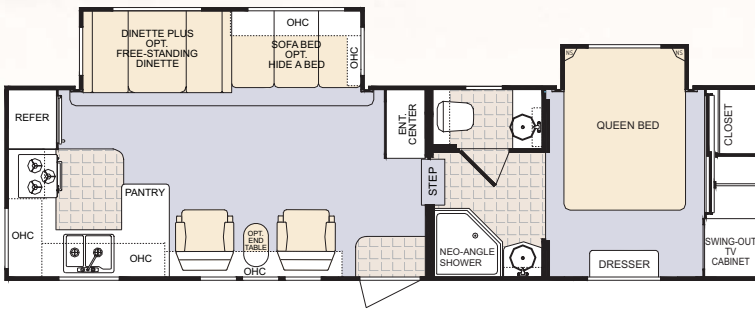
Mid-Profile Fifth Wheels



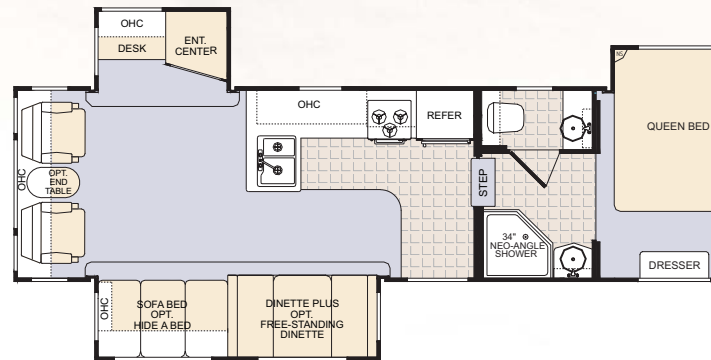
27RL-M5-BS



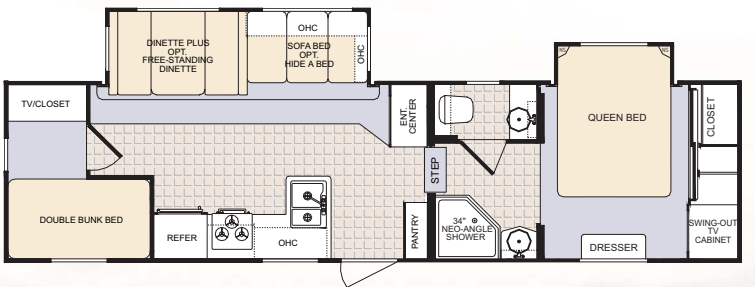
30CE-M5-BS



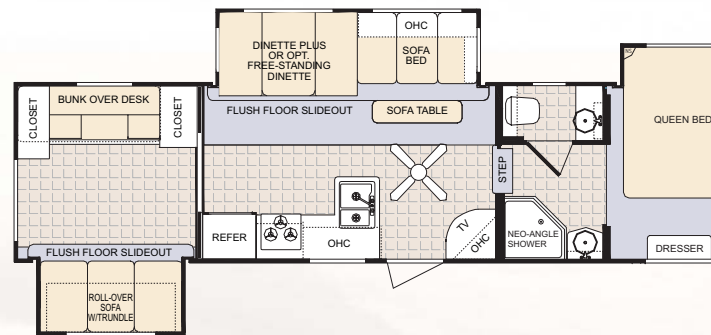
28RK-M5-BS



31RL-M5-BS



29BH-M5-BS



32QB-M5-BS

Weights and Specifications

Mid-Profile Fifth Wheels	27RL-M5-BS	28RK-M5-BS	29BH-M5-BS	30CE-M5-BS	31RL-M5-BS	32QB-M5-BS	Travel Trailers	26FB-DSL
Length	31'9"	32'8"	34'4"	33'5"	34'6"	36'6"	Length	30'6"
Exterior Width	8'	8'	8'	8'	8'	8 ft.	Exterior Width	8'
Exterior Height	12'4"	12'4"	12'4"	12'4"	12'4"	12'4"	Exterior Height	10'8"
Hitch Dry Weight	1684	1636	1871	1864	1780	1852	Hitch Dry Weight	826
Gross Vehicle Weight	12192	12192	12192	12480	12192	12192	Gross Vehicle Weight	11176
Unloaded Vehicle Weight	7747	8106	9233	8886	8756	10276	Unloaded Vehicle Weight	6591
Net Cargo Capacity	3542	3228	2959	3594	2488	1916	Net Cargo Capacity	3986
Fresh Water Capacity	56	56	56	56	56	56	Fresh Water Capacity	56
Grey Water Capacity	80	80	80	80	80	80	Grey Water Capacity	40
Black Water Capacity	40	40	40	40	40	40	Black Water Capacity	40
Furnace Size (BTU)	35000	35000	35000	35000	35000	35000	Furnace Size (BTU)	35000
Water Heater	10	10	10	10	10	10	Water Heater	10
Awning Length	20	18	15	15	15	17	Awning Length	19
Tire Size (All Models): ST225/75R15(D)							Tire Size (All Models): ST225/75R15(D)	

Decors

Travel Trailers



Barcelona Rust



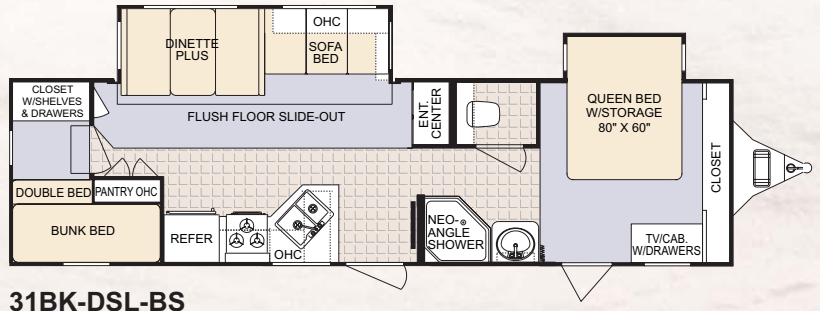
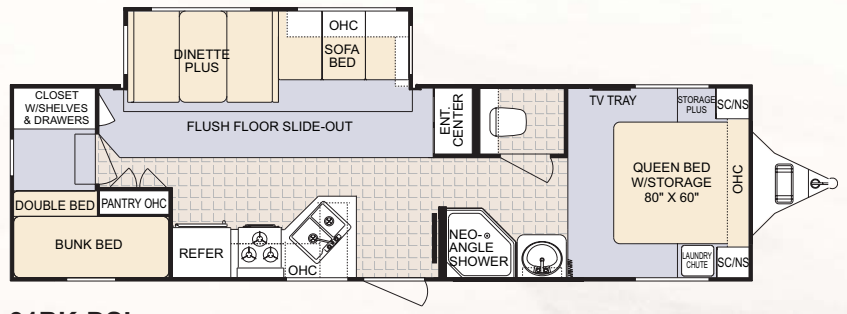
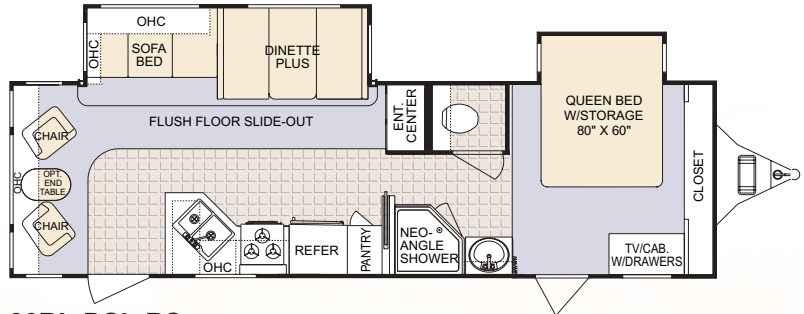
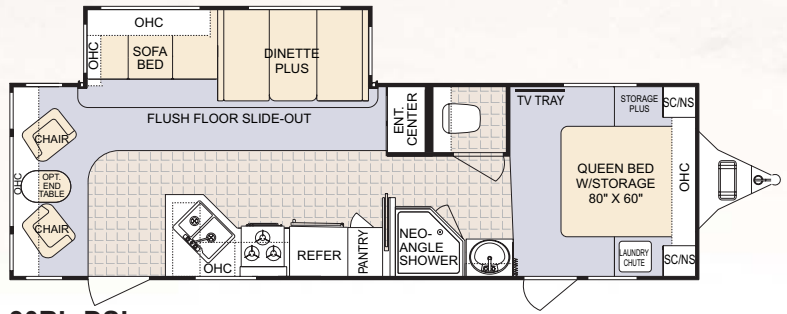
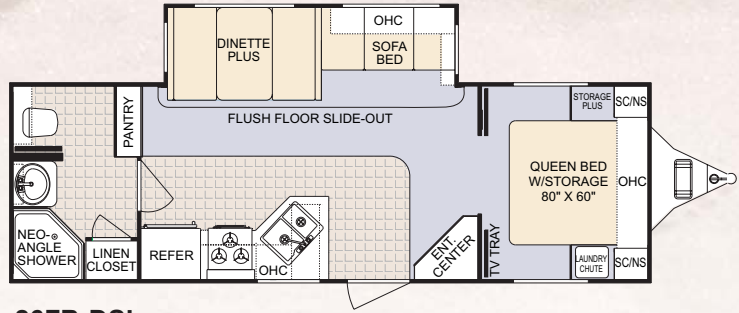
Fusion Sage



Graphic Opal



Raine Blue



30RL-DSL	30RL-DSL-BS	31BK-DSL	31BK-DSL-BS
32'9"	32'9"	34'11"	34'11"
8'	8'	8'	8'
10'8"	10'8"	10'8"	10'8"
944	1240	1100	1288
11176	11176	11176	11176
7120	7420	7458	7758
3644	3184	3244	2962
56	56	56	56
40	40	40	40
40	40	40	40
35000	35000	35000	35000
10	10	10	10
22	22	20	20

Colorado: More Standard Features – More Value

Frame/Chassis Construction

Cambered 10" Steel I-Beam Frame Rails (31 & 32-5W)
Cambered 8" Steel I-Beam Frame Rails (N/A 31 & 32-5W)
Powder-Coated Frame
8 or 10" Steel Crossmembers
"Ladder Design" Construction
Laser Aligned Steel Outriggers
5200 lb. Tandem Axles *
Leaf-Spring Suspension
MOR/*ryde* RE Rubber Shear Spring Equalizer (5W Only)**
Ultra-lube Hubs *
6 Lug Hubs
Powder-Coated Painted Steel Wheels
ST225/75R 15 LRD Tires
Electric 12.25" Drum Braking System
Electric "Worm Gear" Slide System
Flush Floor Main Slide System
Above Floor, Steel, Electric Bedroom Slide (BS Models Only)
Extended Hitch Pin
Optional: MOR/*ryde* Rubber Hitch Pin (5W Only)
Optional: 16" Aluminum Rim Package (5W Only)
ST235/80 R16 LRE E-Rated Tires
16" Spare Tire with Steel Rim
Adjustable MOR/*ryde* Equalizer and Leaf Springs
Optional: Power Tongue Jack (TT Only)
Optional: MOR/*ryde* RE Suspension (TT Only, Std. 5W)

Body/Coach Construction

Sidewalls

High-Gloss Gel Coat RFP Fiberglass
Laminated Construction
Aluminum-Framed, Welded Box Infrastructure
Luan Fiberglass Underlayment
Polystyrene "Block Foam" Insulation
Vinyl-Wrapped *Luan* Interior Wall Panel
80% Dark Tint "Safety Glass" Windows
3M Automotive Film Graphics
"Tuff Coat" Painted Aluminum Radius Skirt

Front & Rear Walls

Front Cap: Gel Coat Molded Fiberglass
Rear Wall: High-Gloss Gel Coat RFP Fiberglass
Aluminum Framed, Welded Box Infrastructure
Laminated Construction
1/4" *Luan* Wood Exterior Wall Panel
80% Dark Tint "Safety Glass" Windows
Polystyrene "Block Foam" Insulation
Vinyl-Wrapped *Luan* Interior Wall Panel

Primary Floor (TT Entire Floor-M5 Main Floor)

3" Vacuum Bonded One-Piece Floor Construction
Aluminum-Framed, Welded Box Infrastructure
Polystyrene "Block Foam" Insulation
1/4" *Luan* Panel
Vinyl Vapor Barrier
5/8" *Structurewood* One-Piece Decking
3/8" 6 lb. Rebond Carpet Pad
32oz. Residential Carpet

Bath/Bedroom Floor (M5 Only)

3" Vacuum Bonded One-Piece Floor Construction
Aluminum-Framed, Welded Box Infrastructure
Polystyrene "Block Foam" Insulation
1/4" *Luan* Panel
5/8" *Structurewood* One-Piece Decking
3/8" 6 lb. Rebond Carpet Pad
32oz. Residential Carpet

Sub-Floor/Underbelly

Laminated Construction

1/4" *Luan* Panel
Poly-Flex 2000 Woven Plastic/Vinyl Aluminum
Bubble Wrap Insulation

Roof/Ceiling

Aluminum Roof Truss with 5" Tapered Box
3/8" Roof Decking
R14 Roof Insulation
Aluminum Radius Roof to Wall Transition
EPDM Rubber Roof Membrane - 12 Year Warranty
Optional: R21 Roof Insulation

Storage Compartment

Aluminum Luggage Door Frames
1" Thick Luggage Door with Lock
Lighted Baggage Areas
Ozite-Lined Compartment

Windows, Doors and Awnings

80% Tinted, Radius-Corner, "Safety Glass" UV-Rated Windows*
Transom Window Above Main Slide (5W Only) *
Opaque Vented Window In Water Closet (NA Side Bath)
Vented Windows (NA with Transom)
Egress Window in Bedroom
Domed, Tinted Skylight Above Shower
30" Radius Entry Door & Dead Bolt Lock
Screen Door
8500 Series *A&E* Awning **
Raised Panel Interior Doors
Pivoting XL Entry Assist Handle
Optional: Duo-Pane Windows
Optional: Slide-Out Awning Toppers (5W Only)

Exterior Features

Deluxe "Quick Release" Pull Pins (5W Only) *
Electric Front Jacks (5W Only) *
15" Spare Tire and Steel Rim *
Spare Tire Carrier with Lift Kit *
Underbelly (2 piece) - Heated & Enclosed
10" Tread, Steel, Triple Entry Steps - Welded to Frame
Lighted Entry Step
Enclosed/Vented Battery Box
Molded ABS Fender Wells
Exterior Patio Light
Exterior Hitch Light
Gravity Water Fill
Exterior Shower System with Hot & Cold
Black Tank Flush System
City Water Fill with Locking Protective Door
Cable Hook-up
Phone Hook-up
Satellite Hook-up
Rear Ladder *
Attic Roof Vent *
Drip Rail Gutter System
Extended Gutter Spout
Optional: Gel-Coat Fiberglass Sidewalls
Optional: Slide-out Awning Toppers (5W Only)
Optional: Rear Gel-Coat Fiberglass Cap (TT Only)

Interior Systems

Electrical Systems & Lighting

Interior Electrical Command Center
30 amp Electrical Service
Detachable Marine-Grade Power Cord
55 Amp Converter
110v GFI Exterior Receptacle
12v Battery Converter/Charger with Overcharge Protection
Battery Box
Residential Wall Switches

Dome Light above Sofa and Dinette
12v Lighting
Decorative Wall Sconces in Bedroom
Fluorescent Lighting in Galley *
Optional: Fluorescent Lighting Package

Plumbing System

10 Gallon Gas and Electric Hot Water Heater **
Quick-Connect Coiled 25 ft. Hose with Sprayer *
Shurflo Water Pump
"PEX" Polyethylene Tubing
Metal Pressure Fittings
Sewer Hose Storage System
Hot and Cold Water Low Point Drains
46 Gallon Fresh Water Tank
Grey Water Tank: See Individual Floorplan Specs for Details
Black Water Tank: See Individual Floorplan Specs for Details
Remote Water Heater Switch

Climate Control

35K BTU Furnace **
Forced Air Ducted Heat
Forced Air Heat in Underbelly
15K BTU Air Conditioner with Quick Cool Vent *
Ceiling Ducted AC Vents
Ceiling Fan - 42" Reversible with Halogen Light Kit (5W Only) *
Mold Resistant, Aluminum-Wrapped AC Plenum
Optional: *Fantastic* Fan in Bedroom
Optional: *Fantastic* Fan in Galley/Main Living
Optional: 12v Tank Pads
Optional: R21 Roof Insulation

Key Interior Features

Pre-Drilled & Screwed Hardwood Cabinet Construction
Decorative Stained Hardwood Slideout Fascia **
6 Panel Doors with Brushed Nickel Designer Hardware **
Designer *Howard Miller* Clock *
32oz. Premium Residential Carpet **
3/8" 6 lb. Rebond Carpet Padding **
Overhead Cabinets with Mini Stutz & Top Mount Hinges in Sofa Slideout
Recessed Steps to Bath/Bedroom

Cabinetry & Countertops

Premium *Formica* Textured Countertops
Wood-Edged Countertops *
Solid Ash & Stained Cabinet Stiles/Frames **
Solid Ash Raised Panel Cabinet Doors
Solid Ash Drawer Fronts
7 Ply Residential Grade Plywood Drawer Construction
Metal Drawer Glides & *Teflon* Rollers
Ball-bearing Drawer Catch
Brushed Nickel Hardware
Glass Inserts with Solid Ash Frames Above Sofa

Window Treatments

Day/Night Shades **
Mini-Blinds (at Kitchen Sink Window)
Designer Hard Valance
Designer Hard-Sided Lambrequins For Privacy

Entertainment Systems

5:1 Home Theater System with Remote **
Satellite Prep *
Cable Jack
TV Antenna with Power Booster
Bedroom TV Prep
Optional: 24" Flat Tube TV

Galley Area

Armstrong Linoleum with "Tough Guard"
Metal J-Faucet *

XL Dual Basin Sink
Sink Covers

Furniture & Appliances

Jack-Knife Sofa
Residential Size Rockers (2) (Where Available)
Booth Dinette
Queen Size Premium Pillow-Top Mattress
8 cu.ft. Double Door Refrigerator **
Solid Ash, Raised Panel Refrigerator Inserts **
"OTR" Microwave, 1.3 cu. Ft. **
Integrated Exhaust Fan (with Microwave)
Amana 3-Burner Stovetop
Range Cover - 2 Piece Metal *
Water Purifier *
Interior Utility Center
Optional: End Table with Lamp
Optional: 10 cu.ft. Refrigerator
Optional: Hide-A-Bed Sofa
Optional: Rocker Recliners (2) (Where Available)
Optional: Central Vacuum System (5W Only)
Optional: Free-Standing Table with 4 Chairs (Chairs with Below-Seat Storage)

Bath Area

2 Piece Marbled Neo-Angle Shower Enclosure *
Rain-Glass Shower Walls & Door
Brushed Nickel Shower Hardware and Wand
Large Medicine Cabinet with Vanity Lights & Mirror
Fiberglass Vanity Sink
Residential-Style Brushed Nickel (Metal) Vanity Faucet
Solid, Six-Panel Privacy Door
Residential, Six-Panel Lavatory Doors
Porcelain Bowl *Theford* Toilet
Power Vent
Toilet Tissue Holder
Brushed Nickel Bathroom Accessories
Towel Hooks & Bar

Bedroom Area

Bedroom Slide (BS Only)
Nightstand (Non-Slide TT Only)
Solid Hardwood, Stained Slide Fascia
Chest of Drawers (5W Only)
TV Prep
Egress Window
Premium Bedspread Package & Window Coverings
Below Bed Storage
Front Wardrobe Ensemble (5W Only)
Sliding Mirrored Doors with Hanging Storage
Swivel TV Frame & Drawer Bank

Safety Features

Fire Extinguisher
Dead Bolt Locks on Entry Doors
120v GFI Protected Exterior Receptacle
LP Gas Detector
Smoke Detectors
Egress Windows
Safety Glass
10" Deep Entry Step *
Entry Step Light
Patio Light *
XL Folding Entry Assist Handle *
Solid Wood Exit Handle
Front, Rear & Side Amber Road Lights

* *Colorado Convenience Package*

** *Colorado Premiere Package*

List Applicable to Post-12/06 Production

www.Colorado-rv.com

2164 Caragana Court ■ Goshen, IN 46526

Sales: 574.534.1224 ■ Fax: 574.975.0626

Parts, Service & Warranty: 574.537.0700

Vehicle loading - Every effort has been made to provide the greatest number of options for the recreational vehicle owner. Along with these choices comes the responsibility to manage the loads that are imposed by the choices that they remain within the manufacturer's specified chassis weight limits. Do not overload the recreational vehicle.

Some optional equipment not included. Net carrying capacity (NCC) is determined by subtracting unloaded vehicle weight (UVW) from gross vehicle weight (GVWR) and includes fluids, options and cargo. Liquid capacities and weights are approximations only. **Warning** - This information is intended as a guide only. Weights of individual vehicles may vary. Consult your owner's manual for complete loading, weighing and towing instructions. *UVW and Hitch Dry Weight are base weights of units without options. Each unit includes a weight label which lists specific weight information for that unit.

Product information, specifications, and photography in this brochure were as accurate as possible at time of printing. Photographs may contain some features that are optional on your vehicle. Since we continually strive to improve our products, actual products may differ. Prices and specifications are subject to change without notice. All capacities are approximate and dimensions are nominal. Some features or options may be different or unavailable in Canada. Vehicles are designed for recreational use only and not intended for use as a primary residence. All product brand names used in this brochure are registered trademarks of Thor Industries Inc. Unauthorized use of trademarks is prohibited by law.

©2007 Thor Industries, Inc.

rev1.C06p207

Your Local Dealer