

Jayco | Precept & Precept Prestige Class A Motorhome

# PRECEPT & PRECEPT PRESTIGE

SUPREME QUALITY & DRIVABILITY



**2+3**  
YEAR | YEAR  
WARRANTY



# INTERIOR DESIGN



## DOVER



Wood



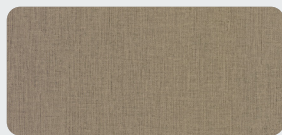
Floor



Countertop



Main Fabric

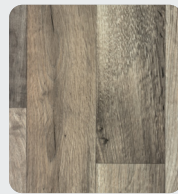


Furniture

## MODERN FARMHOUSE



Wood



Floor



Countertop



Main Fabric



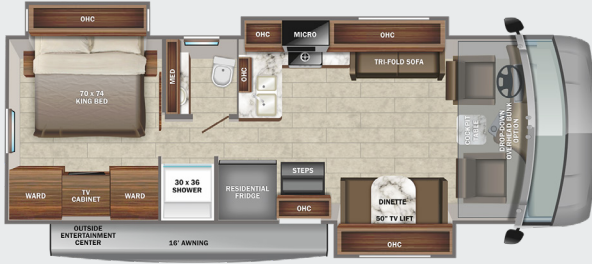
Furniture





# PRECEPT

**31UL** OPTIONS: A, B



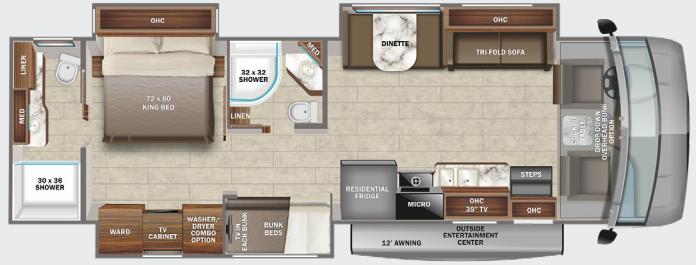
**34B** OPTIONS: A, C



**34G** OPTIONS: A



**36A** OPTIONS: A, B



**36C** OPTIONS: A



**OPTIONS**

**A**



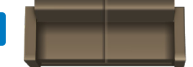
12 Cu. Ft. Fridge

**B**



Theater Sofa

**C**

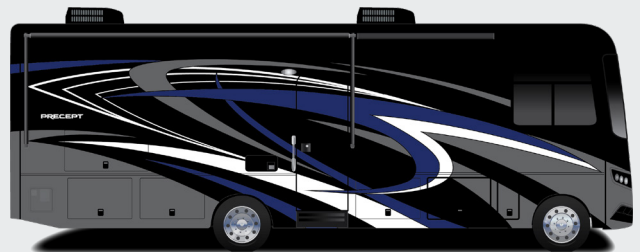


93" Reclining Sofa

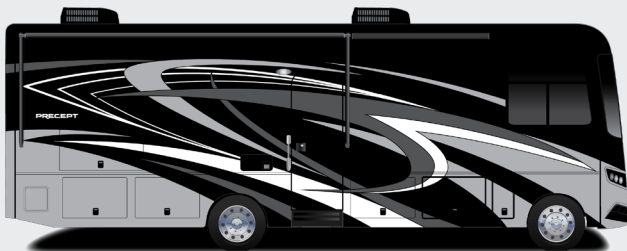
## EXTERIOR SELECTIONS



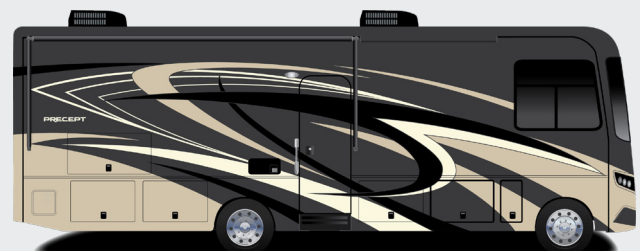
Standard Graphics Package



Alpine Full-Body Paint



Denali Full-Body Paint



Everest Full-Body Paint

# STANDARDS & OPTIONS

## CUSTOMER VALUE PACKAGE

JRIDE® PLUS: Computer-balanced driveshaft, variable-rate front and rear jounce bumpers, heavy-duty front and rear stabilizer bars, SACHS shocks, 22.5" Michelin® tires  
Automatic hydraulic leveling jacks  
Frameless windows  
15,000 BTU A/C unit with heat pump and second 13,500 BTU A/C unit  
Exterior entertainment center with outside speakers, LED TV mounted on swivel bracket and single-disc DVD/FM radio  
Electric patio awning with LED lights  
Slideout cover awnings  
Onan® Marquis Gold Genset 5,500-watt gas generator with auto-gen start  
1,000-watt inverter  
50-amp electrical service  
Girard® tankless LP water heater  
Sony® infotainment center with Apple® CarPlay™ and Android Auto™  
Backup and side-view cameras  
Removable driver/passenger cockpit table  
LED-lit, solid-surface kitchen countertops with integrated stainless steel sink and sink covers  
LED HD Smart Fire TV in living area  
Day/night roller shades in living area

## DRIVING

Ford® F53 chassis  
GVWR- 22,000 lb. (31UL, 34B, 34G), 24,000 lb. (36A, 36C)  
GCWR- 26,000 lb. (31UL, 34B, 34G), 30,000 lb. (36A, 36C)  
7.3L V-8 350 HP engine with 468 ft.-lb. torque  
6-speed automatic TorqShift® transmission with overdrive and tow haul mode  
210-amp alternator  
G-rated highway tires- 235/80R22.5 (31UL, 34B, 34G), 255/80R22.5 (36A, 36C)  
Front and rear disc, 4-wheel anti-lock brakes  
5,000 lb. rear hitch receiver with dual connector and 7-pin plug  
12V chassis battery  
80 gal. fuel tank  
120 in. panoramic windshield - largest in the industry  
Swivel driver and passenger seats  
Soft-touch, vinyl-wrapped automotive dash  
Tilt steering wheel  
A/C and cruise control

## EXTERIOR

StrongholdVBL™ roof, floor and sidewalls  
Bead-foam insulation (R-24 max roof, R-9 max floor, R-5 max walls)  
One-piece, seamless, fiberglass front cap  
One-piece, crowned fiberglass roof  
Fiberglass exterior walls with vinyl graphics  
Entrance door with industry's largest travel-view window  
Electric-powered entrance step  
Lockable, pass-through storage compartments with metal slam latches

Heated holding tanks (12V pads)  
16.5 gal. propane tank (56 lb.)  
LP quick-connect hookup  
Exterior utility center  
Winterization drain system  
Outside shower  
12V demand water pump  
Transfer switch with reverse polarity protection  
(2) 6V AGM (220Ah) house batteries on slideout tray  
190W solar panel with dual controller  
Flush-mount LED marker lights  
Third brake light  
Porch light

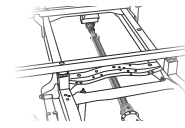
## INTERIOR

Power front privacy shade with manual side privacy shades  
JAYCOMMAND® powered by Firefly  
84 in. interior ceiling height with padded vinyl ceiling  
High-intensity, recessed LED ceiling lights  
LED-lit hardwood fascia  
Hardwood cabinet doors and drawers  
Ball-bearing drawer guides  
Jayco-exclusive, easy-operation legless dinette table  
2-point lap safety belts in all designated seating locations  
Auto-ignition ducted furnace- 30,000 BTU (31UL), 35,000-BTU (34B, 34G, 36C), (2)30,000 BTU (36A)  
Furrion® electric fireplace (34B, 34G, 36C)  
Prep for satellite dish  
Cable TV hookup with RG-6 coax and video selector switch  
Winegard 2.0 Wi-Fi/4G antenna  
21 cu.ft. residential refrigerator with ice and water in door  
Furrion® all-in-one cooktop and oven  
Residential-size microwave  
Decorative kitchen backsplash  
Water filtration system  
Shower with decorative surround, glass door, skylight and light  
Stainless steel bathroom sink  
Porcelain toilet with foot flush  
Powered roof vent in bathroom with wall switch  
Walk-around king-size bed with bedspread and nightstands  
LED TV in bedroom  
Under-bed storage (select models)  
Large wardrobes  
Bunks with industry-exclusive 300 lb. capacity each (36A)  
Smoke alarm  
Carbon monoxide detector

## OPTIONS

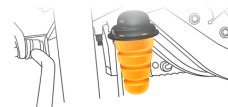
Drop-down overhead bunk in cab area with 750 lb. capacity  
Power theater seating (N/A 34B) (STD 34G, 36C)  
93 in. straight reclining sofa (34B)  
12 cu.ft. gas/electric refrigerator  
Stackable washer/dryer (36C)  
Combination washer/dryer (34B, 34G, 36A)

## JRIDE PLUS



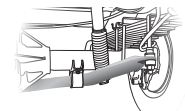
### COMPUTER-BALANCED DRIVESHAFT

Ensures smooth and efficient power transfer to the wheels



### VARIABLE RATE FRONT & REAR JOUNCE BUMPERS

Assist during extreme road occurrences to absorb impact and dampen excess road noise



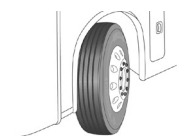
### HEAVY-DUTY FRONT & REAR STABILIZER BAR

A large bar and polyurethane bushings, instead of rubber, transfer power faster for extra support, more stability and easier handling



### SACHS SHOCK ABSORBERS

Large-diameter tube design pairs gas and hydraulics to resist heat and pressure while independently adjusting to changing road conditions



### 22.5" MICHELIN® TIRES

Commercial-grade tires built for long hauls and heavy loads

FLOORPLAN	GVWR (lbs.)	GCWR (lbs.)	WHEEL BASE	OVERALL LENGTH	EXTERIOR HEIGHT WITH SATELLITE AND A/C	EXTERIOR WIDTH	INTERIOR HEIGHT	FRESH WATER CAPACITY (gal.)	GRAY WASTE WATER CAPACITY (gal.)	BLACK WASTE WATER CAPACITY (gal.)
31UL	22,000	26,000	228"	33'	12' 10"	101"	84"	72	40	50
34B	22,000	26,000	228"	36' 11"	12' 10"	101"	84"	72	40	40
34G	22,000	26,000	238"	36' 6"	12' 10"	101"	84"	72	40	50
36A	24,000	30,000	252"	38' 10"	12' 10"	101"	84"	72	40/32	40/32
36C	24,000	30,000	252"	38' 10"	12' 10"	101"	84"	72	40/32	40/32



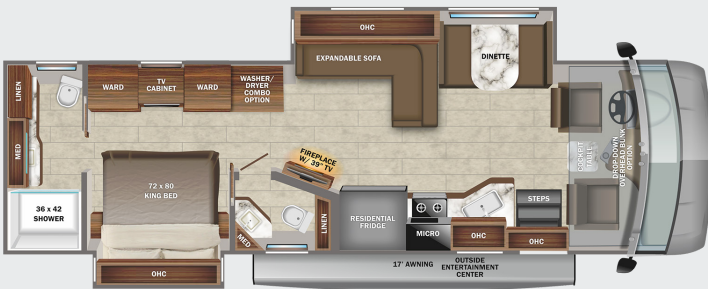
**36B** OPTIONS: A, B



**36H** OPTIONS: A, B, E

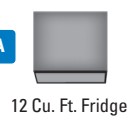


**36U** OPTIONS: A, C, D



**OPTIONS**

**A**



12 Cu. Ft. Fridge

**B**



Theater Sofa

**C**



Freestanding Dinette

**D**



93" Reclining Sofa

**E**



120" Reclining Sofa

## EXTERIOR SELECTIONS



Basalt Full-Body Paint



Feldspar Full-Body Paint



Quartz Full-Body Paint



Sandstone Full-Body Paint



# STANDARDS & OPTIONS

## CUSTOMER VALUE PACKAGE

JRIDE® PLUS: Computer-balanced driveshaft, variable-rate front and rear jounce bumpers, heavy-duty front and rear stabilizer bars, SACHS shocks, 22.5" Michelin® tires  
Automatic hydraulic leveling jacks  
Frameless windows  
15,000 BTU A/C unit with heat pump and second 13,500 BTU A/C unit  
Exterior entertainment center with outside speakers, LED TV mounted on swivel bracket and single-disc DVD/FM radio  
Electric patio awning with LED lights  
Slideout cover awnings  
Onan® Marquis Gold Genset 5,500-watt gas generator with auto-gen start  
2,000-watt inverter  
50-amp electrical service  
Girard® tankless LP water heater  
Pioneer® 8" infotainment center with Apple® CarPlay™ and Android Auto™  
Backup and side-view cameras  
Removable driver/passenger cockpit table  
LED-lit, solid-surface kitchen countertops with integrated stainless steel sink and sink covers  
LED HD Smart Fire TV in living area  
Day/night roller shades in living area

## DRIVING

Ford® F53 chassis  
GVWR- 24,000 lb.  
GCWR- 30,000 lb.  
7.3L V-8 350 HP engine with 468 ft.-lb. torque  
6-speed automatic TorqShift® transmission with overdrive and tow haul mode  
210-amp alternator  
G-rated highway tires- 255/80R22.5  
Front and rear disc, 4-wheel anti-lock brakes  
5,000 lb. rear hitch receiver with dual connector and 7-pin plug  
12V chassis battery  
80 gal. fuel tank  
120 in. panoramic windshield - largest in the industry  
Swivel driver and passenger seats  
Soft-touch, vinyl-wrapped automotive dash  
Tilt steering wheel  
A/C and cruise control

## EXTERIOR

StrongholdVBL™ roof, floor and sidewalls  
Bead-foam insulation (R-24 max roof, R-9 max floor, R-5 max walls)  
One-piece, seamless, fiberglass front and rear caps  
One-piece, crowned fiberglass roof  
Premium Sikkens full-body paint  
Entrance door with industry's largest travel-view window  
Electric-powered entrance step  
Lockable, pass-through storage compartments with metal slam latches  
24.5 gal. propane tank (83 lb.)  
LP quick-connect hookup  
Theford® Sani-Con Turbo Macerator system

Exterior utility center  
Winterization drain system  
Outside shower  
12V demand water pump  
Transfer switch with reverse polarity protection  
(2) 6V AGM (220Ah) house batteries on slideout tray  
190W solar panel with dual controller  
Flush-mount LED marker lights  
Third brake light  
Porch light

## INTERIOR

Power front privacy shade with manual side privacy shades  
JAYCOMMAND® powered by Firefly  
84 in. interior ceiling height with padded vinyl ceiling  
High-intensity, recessed LED ceiling lights  
Vinyl plank flooring  
LED-lit hardwood fascia  
Hardwood cabinet doors and drawers  
Deluxe hidden cabinet hinges  
Ball-bearing drawer guides  
Jayco-exclusive, easy-operation legless dinette table  
2-point lap safety belts in all designated seating locations  
35,000-BTU auto-ignition ducted furnace  
Furrion® electric fireplace  
Prep for satellite dish  
Cable TV hookup with RG-6 coax and video selector switch  
Winegard 2.0 Wi-Fi/4G antenna  
Wood-framed kitchen window with spice cabinets  
21 cu.ft. residential refrigerator with ice and water in door  
2-burner induction cooktop  
Convection microwave oven  
Water filtration system  
One-piece, fiberglass shower with glass door, skylight and light  
LED-lit, stainless steel bathroom sink  
Porcelain toilet with foot flush  
Powered roof vent in bathroom with wall switch  
Walk-around king-size bed with bedspread and nightstands  
LED TV in bedroom  
Under-bed storage (select models)  
Large wardrobes  
Bunks with industry-exclusive 300 lb. capacity each (36B)  
Smoke alarm  
Carbon monoxide detector

## OPTIONS

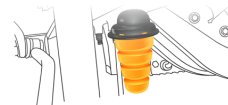
Drop-down overhead bunk in cab area with 750 lb. capacity  
Combination washer/dryer (36U, 36B)  
Stackable washer/dryer (36H)  
Power theater seating (N/A 36U)  
120 in. straight reclining sofa (36H)  
93 in. straight reclining sofa (36U)  
12 cu.ft. gas/electric refrigerator  
Free-standing table with 4 chairs (N/A 36U)

## JRIDE PLUS



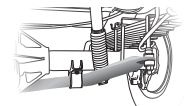
### COMPUTER-BALANCED DRIVESHAFT

Ensures smooth and efficient power transfer to the wheels



### VARIABLE RATE FRONT & REAR JOUNCE BUMPERS

Assist during extreme road occurrences to absorb impact and dampen excess road noise



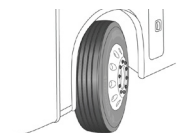
### HEAVY-DUTY FRONT & REAR STABILIZER BAR

A large bar and polyurethane bushings, instead of rubber, transfer power faster for extra support, more stability and easier handling



### SACHS SHOCK ABSORBERS

Large-diameter tube design pairs gas and hydraulics to resist heat and pressure while independently adjusting to changing road conditions



### 22.5" MICHELIN® TIRES

Commercial-grade tires built for long hauls and heavy loads

FLOORPLAN	GVWR (lbs.)	GCWR (lbs.)	WHEEL BASE	OVERALL LENGTH	EXTERIOR HEIGHT WITH SATELLITE AND A/C	EXTERIOR WIDTH	INTERIOR HEIGHT	FRESH WATER CAPACITY (gal.)	GRAY WASTE WATER CAPACITY (gal.)	BLACK WASTE WATER CAPACITY (gal.)
36B	24,000	30,000	252"	38' 8"	12' 10"	101"	84"	72	50/41	31/41
36H	24,000	30,000	252"	38' 8"	12' 10"	101"	84"	72	40/50	40
36U	24,000	30,000	252"	38' 2"	12' 10"	101"	84"	72	50	31/41



# INTERIOR DESIGN



## CROSSVILLE



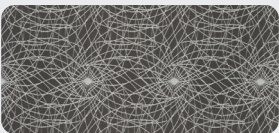
Wood



Floor



Countertop



Main Fabric



Furniture

## ASHVILLE



Wood



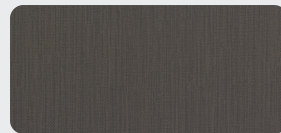
Floor



Countertop



Main Fabric



Furniture



# THE JAYCO DIFFERENCE



1. **120" panoramic windshield** equipped with oversized wiper blades to allow for maximum visibility
2. **Exterior entertainment center** comes standard with an LED TV mounted on a swivel bracket
3. **One-piece seamless fiberglass roof** offers unmatched durability
4. **Lockable pass-through storage** with easy-to-use Slam-latch™ doors
5. **Seatbelts in every designated seating position** secure the most precious cargo
6. **Frameless windows** make exterior maintenance easier than ever and give the unit a sleek, modern look
7. **Stronghold VBL™** vacuum-bonded, laminated floor, sidewalls and roof

**2+3**  
YEAR | YEAR  
LIMITED | STRUCTURAL  
WARRANTY

## TRAVEL WITH CONFIDENCE • NO ONE OFFERS A BETTER WARRANTY

At Jayco, we build our RVs to handle every adventure, then back them with our industry-leading 2+3 limited warranty. Our 2-year limited warranty has you covered for 2 camping seasons. That's 730 days. In addition, our 3-year structural limited warranty has you covered for 3 camping seasons or 1,095 days. You won't find a better limited warranty in the business, because the only strings that we attach are those that deliver the ultimate in reliability. That's the Jayco difference. So go explore. For a copy of our 2-year limited + 3-year structural limited warranty with complete terms and conditions, please contact your local Jayco dealer.

Meet your Jayco Dealer



Scan QR  
code for  
specification  
definitions

Some specs at the time of print may include estimates.  
For the most updated information, please visit  
[Jayco.com/precept](http://Jayco.com/precept) or [Jayco.com/precept-prestige](http://Jayco.com/precept-prestige)

**Jayco, Inc. | P.O. Box 460 | Middlebury, IN 46540**

See dealer for further information and prices. All information in this brochure and on [www.jayco.com](http://www.jayco.com) is the latest available at the time of publication approval. Jayco reserves the right to make changes and to discontinue models without notice or obligation. Photography may show optional equipment or props used for decoration purposes only. RVs built for sale in Canada may differ to conform to Canadian codes. JAYCO and the JAYCO BIRD IN FLIGHT are registered trademarks of Jayco, Inc. Printed in USA 9/21 ©2021 Jayco, Inc. 257071



**Jayco - Part of the Jayco Family of Companies**