

CATALINA

LEGACY
EDITION
PACKAGE
OFFER
INSIDE

CATALINA



333RETS

The 333RETS is a rear living couples coach. This unique layout includes a more functional living room with the entertainment center closer to the seating, it also features numerous windows that let in an abundance of natural light. The corner kitchen design offers more countertop space than similar competitive floorplans.



333RETS shown in Mocha decor (Back to front view)



333RETS Bedroom with quilted comforter, mirrored wardrobe, overhead cabinets two night stands and fireplace.



TV not included



333RETS shown in Mocha decor (Front to back view)



Coachmen
Leader to the Great Outdoors.

"Coachmen RV... Great Product, Great Price, Great Camping"

Shown with optional TV

293QBCK

Catalina's 293QBCK is designed to sleep 9-11 comfortably, the triple bunk Coa-Cube bedroom is a great sleeping /entertainment area. The STANDARD pull out camp kitchen includes a pull out countertop, mini fridge, camp stove and sink with hot and cold water.



Shown with optional TV

293QBCK shown in Truffle decor (Back to front view)



293QBCK Bunk room



Pull out camp kitchen (STANDARD on 293QBCK, OPTIONAL on 273BH, 273DBS, 303BHS)



323BHDS CK

The Catalina 323BHDS CK is one of our top selling family floorplans. This slideout travel trailer floorplan sleeps 9-10 comfortably. Have a big family? This is the floorplan for you, the 323BHDS CK has a **STANDARD** full size camp kitchen that includes a refrigerator, camp stove, overhead cabinets, silverware and utility drawers, and the hot and cold water at the sink drains into it's own 30 gallon holding tank. This is a great way to feed the hungry troops while keeping the mess outside.



323BHDS CK shown in Fawn decor (Front to back view)



323BHDS CK Bunk area with Coa-Cube

TV not included



323BHDS CK STANDARD Camp kitchen



Fireplace at the base of the entertainment center
(STANDARD 233DS, 243RBS, 293RBKS, 293RLDS, 323TSQB,
333RETS, 343QBDS. OPTIONAL 283RKS, 293RLS, 323BHDS CK)

283RKS

The 283RKS is a great couples coach. With abundant cabinet storage and countertop space-it truly gives you an "at home" feel. The entertainment area is ideally situated for conversation or comfortably watching television while spending time inside. The spacious bedroom features a walkaround queen bed, dual nightstands and abundant storage space.





283RKS shown in Camel decor (Front to back view)



- | | | |
|---|---|---|
| 1. Drop edge Thermofoil countertops (not T-mold or self edge) | 8. Decorative glass inserts on cabinet fronts | 16. Thermofoil dinette table |
| 2. High rise faucet with 60/40 sink | 9. Roof ducted A/C (optional) | 17. Overhead cabinet storage with gas strut lift assist |
| 3. Three burner range (stainless steel oven optional) | 10. Stainless steel microwave | 18. Residential style carpet |
| 4. Full extension ball bearing metal drawer guides | 11. Standard night shades in living area | 19. High rise radius corner cushion on u-shape dinettes |
| 5. In-floor ducted heat (N/A 223FB, 273BH) | 12. Congoleum linoleum with 3 yr. cold crack warranty | 20. Decorative sofa pillows |
| 6. Grace Cherry stained wood cabinetry | 13. Reversible refer insert (Grace Cherry or Black) | 21. Solid bedroom privacy door (most floorplans) |
| 7. 81" Interior height (78" 223FB, 273BH) | 14. Underbooth full length drawer storage (one side) | |
| | 15. AM/FM/CD Radio MP3/iPod, (DVD player optional) | |



A
Wireless Rear vision camera prep
(Camera not included)



B
Oversized exterior baggage door



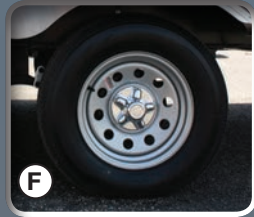
C
Radius triple entry step
(Double non slide models)



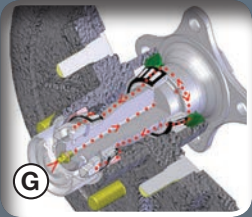
D
Smooth fiberglass radius
entry door with painted finish



E
Four (4) stabilizer jacks
Standard on all models
(Most competitors offer this as an
option not a standard)



F
Catalina's exclusive tire and rim package
includes: radial tires, polished aluminum
fender skirts and e-coat
maintenance free rims



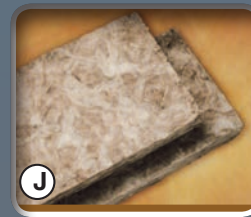
G
Superlube™ axles for fast
and easy lubrication



H
G20 rated tinted black framed
windows with safety glass



I
5/8" Tongue in groove plywood decking
glued and stapled to the
floor studs-not OSB



J
Full 6 sided R-7 eco-batt
insulation. This is a new and
sustainable technology



SUPERIOR BENEFITS



Drop edge Thermofoil countertop Benefits:

- **Pull Test**—It pulls at 450-500 PSI It will pull the core apart before the Thermofoil gives.
- **Cold cracks**-Will not cold crack or pull out like a T-mold Edge or Self-Edge.
- **Moisture Exposure**-It will withstand moisture better than T-mold Edge or Self-Edge because it is sealed so that no water can penetrate.



The floor is the base and key component of your RV. Therefore, we refuse to build anything but the best. Beginning with building the frame on 12"-16" centers, and bolting as well as gluing the 5/8" tongue and groove plywood, our methods and materials set us apart from the competition.



A pressurized LP line test ensures that your unit is safe and all LP gas components are in working order.

Our full radius smooth metal front end creates a more aerodynamic unit providing:

- Better airflow
- Better towability
- Improved fuel costs
- Easy to clean



A thorough electrical check makes sure that all electrical components are in working order, and that no electrical connections have been compromised during construction.



Our standard 6 gallon gas/electric DSI water heater allows you to fire up your water heater quickly and easily from inside your Catalina. It also features a great quick recovery feature which allows you to heat up to 16.2 gallons of hot water per hour. So whether you are washing the dishes or taking a shower, you'll always have plenty of hot water.



Seal-Tech Test-We check ALL of our coaches for water leaks by pressurizing the unit and then using a Seal-Tech spray on every part of the unit to identify any problem areas. (We find the problem areas, so you don't have to.)



All of our craftsman are thoroughly trained to use a framing table with jigs and clamps. This ensures that the cabinets are built to extremely tight tolerances for tight and secure cabinetry that will last for years. This method requires real wood styles, not MDF.

STANDARD AND OPTIONAL FEATURES

Exterior Standard Features

- Cambered structural steel I-Beam frame (with full width out riggers)
- 3/8" Fully decked walk-on roof
- One-piece seamless walkable roof
- Radius entry steps
- 5/8" Tongue & groove plywood floor decking
- R-7 fiberglass insulation in sidewalls, roof & floor
- Silver E-coat maintenance free wheels
- G-20 tinted windows
- Rain gutters with extended molded downspouts
- Platinum .024" Aluminum exterior skin with .030 skirt metal
- Painted bumper w/drain hose carrier and end caps
- Radius-cornered fiberglass entrance door
- Roto-cast holding tanks
- Flush mount baggage doors that are lockable and radius cornered
- Polished aluminum fender skirts
- Self-adjusting brakes
- 110V G.F.C.I. protected exterior receptacle
- 30-Amp electrical service w/deluxe 110v 45-Amp power converter
- City water hook-up
- Solar power prep
- Rear vision camera prep

Interior Standard Features

- Large pot & pan drawer
- Full length drawer (1) underneath dinette
- Under-bed storage, bed lifts easily on 2 gas struts
- 2 Shirt closets with mirrors
- Fireplace at the base of the entertainment center (233DS, 243RBS, 293RBKS, 293RLDS, 323TSQB, 333RETS, 343QBDS)
- STANDARD Fireplace at the base of the entertainment center and in the bedroom (333RETS only)
- AM/FM radio with CD player, iPod and MP3 dock
- Residential in-floor ducted heat (N/A 223FB, 273BH)
- Cable/TV hook-up in front bedroom
- 81" Living room ceiling height
- 2 full-length thermofoil night stands w/ recepts
- Congoleum linoleum flooring
- 30K BTU auto-ignition furnace with wall

thermostat (20K BTU 223FB, 273BH)

- Grace Cherry stained wood cabinets
- 12V On demand water pump
- Decorative glass in living room cabinets
- Systems monitor panel
- Jack knife convertible sofa with sofa pillows
- Shower curtain with curved shower track
- Neo-angle shower with glass doors (STANDARD 233DS, 243RBS, 253RKS, 263RLS, 283RKS, 293RBKS, 293RLS, 293RLDS, 333BHKS, 333RETS)
- Hard valance window treatment with lambrequin
- Large dinette tabletop with marine grade pedestal
- Marine toilet with foot flush
- Full size medicine cabinet w/ mirror
- Bathroom exhaust fan
- Drop edge Thermofoil countertop
- Gas/Electric double door refer w/ reversible insert
- High rise faucet w/ large 60/40 double bowl sink
- 3-Burner range w/ 9,000 BTU Superburner™
- Screwed cabinet construction with pocket bored solid lumber core stiles
- Easy-View extra large picture window at dinette
- Silverware drawer
- Solid bedroom and bunk room doors (per floorplan)
- Radius corner interior walls (where applicable)

Customer Premier Package (Mandatory Option)

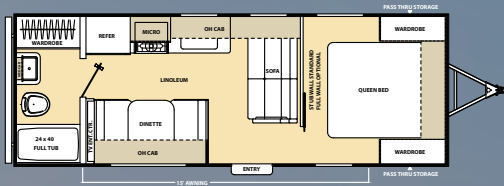
- 13.5K BTU A/C
- Double door refer
- 6 gallon gas/electric DSI water heater
- Metal drawer guides in kitchen
- Radial tires
- Superlube™ axles
- ABS tub/shower surround
- 20lb. LP bottles w/ ABS cover and Auto Switchover
- Decorative backsplash in kitchen
- Stainless steel microwave
- Patio awning with LED backlight
- Aluminum fender skirts
- Residential quilted bedspread
- Stab jacks (4)
- Water heater by-pass winterization kit
- Contin-u-s™ TV antenna with RG-6 coax cabling and satellite prep

Additional Options

- Power package (power awning with LED light strip & power tongue jack with light)
- 32" flat screen TV
- Enclosed and heated underbelly (NA - 223FB, 273BH)
- 13.5K BTU ducted A/C
- 15K BTU ducted A/C
- Multi Media Sound System with CD/DVD player, iPod and MP3 docking
- Swing arm TV bracket
- 50 Amp service with second 13.5K A/C (293RLDS, 323BHDS, 323TSQB, 333BHKS, 333RETS, 343QBDS)
- 50 Amp service with second A/C prep (293RLDS, 323BHDS, 323TSQB, 333BHKS, 333RETS, 343QBDS)
- Free standing table w/ 4 chairs (N/A U-Dinette floorplans) (STANDARD 293RLDS, 333RETS)
- Stainless steel range with oven IPO 3 burner cooktop
- Tri-fold hide-a-bed sofa (N/A- 233DS, 253RKS and non slide models)
- Kitchen sink covers
- More Wattage for you Cottage audio upgrade
- Range Cover
- Outside shower
- Bar stools (Recommended-233DS, 243RBS, 283DDS, 343QBDS)
- Fireplace in living room (283RKS, 293RLS, 323BHDS CK)
- Skylight above tub/shower
- Spare tire w/tire carrier & cover
- Pull out camp kitchen (273BH, 273DBS, 303BHS) (STANDARD 293QBCK)
- Front diamond plate (mandatory)
- Full wall w/pocket door (Available on 223FB, 273BH)
- Front Queen Bed IPO Quad Bunks (343QBDS)
- Front triple bunks w/ COA cube IPO quad bunk (343QBDS)
- Two (2) 30 Lbs. LP tanks with ABS cover

CATALINA

223FB



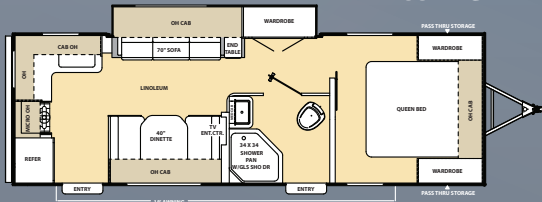
233DS



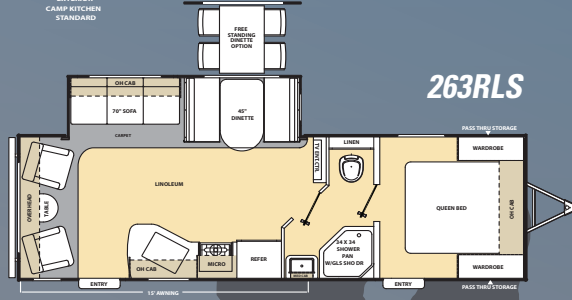
243RBS



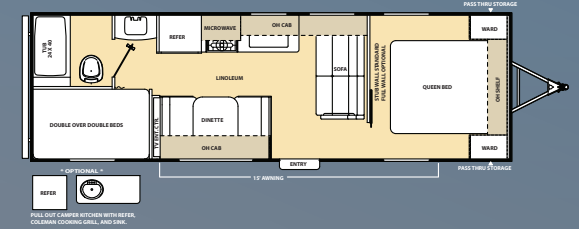
253RKS



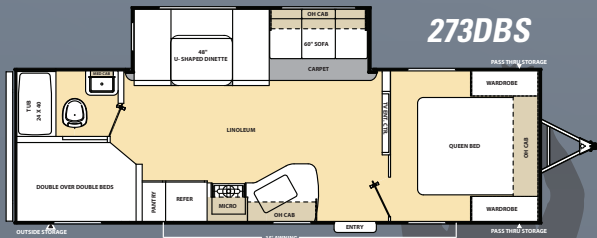
263RLS



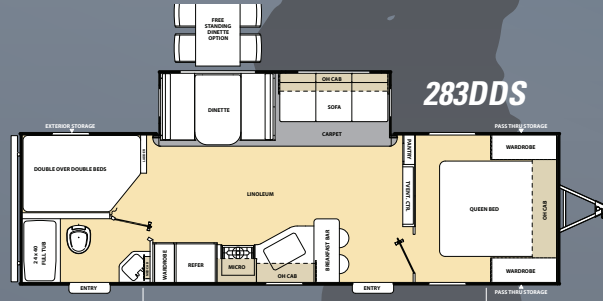
273BH



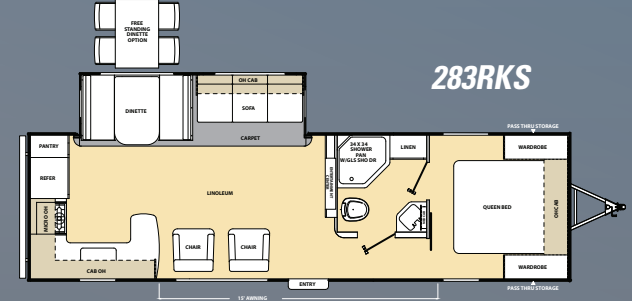
273DBS



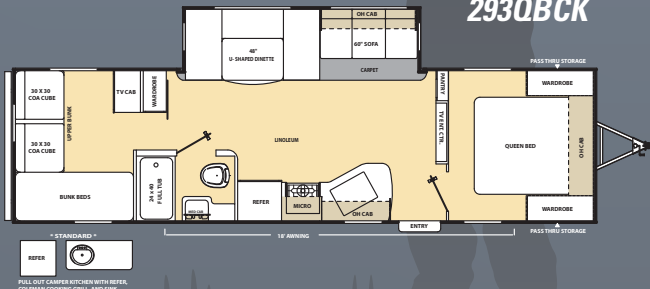
283DDS



283RKS

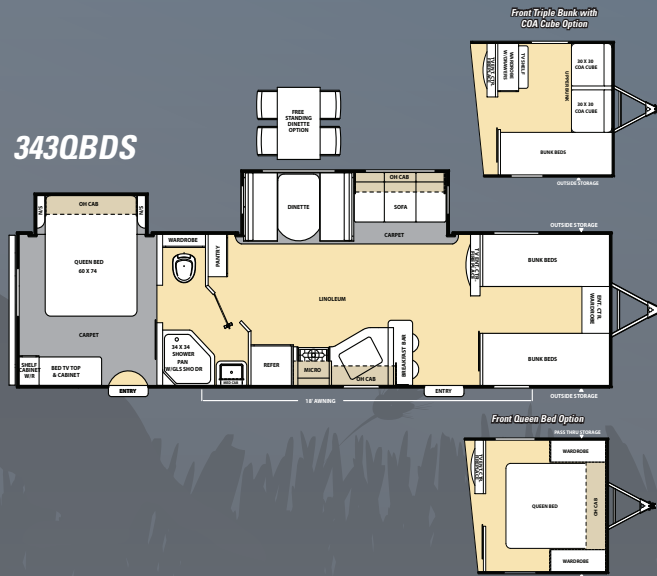
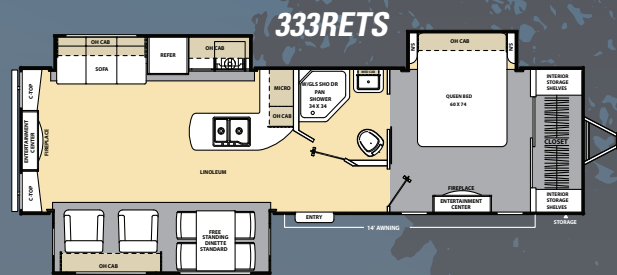
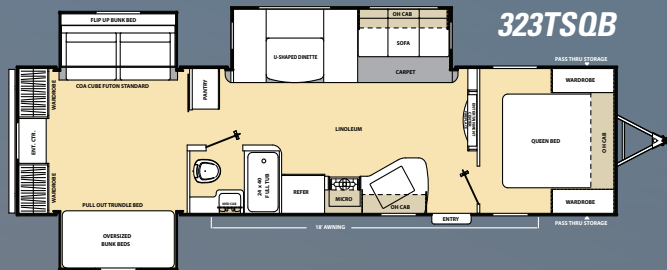
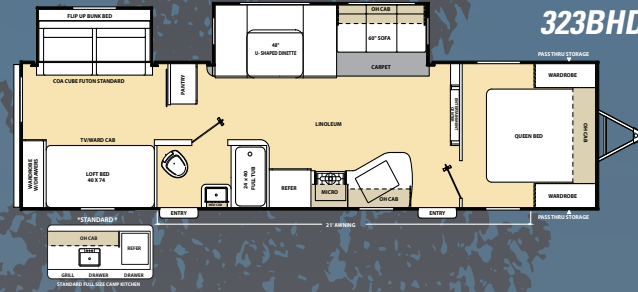
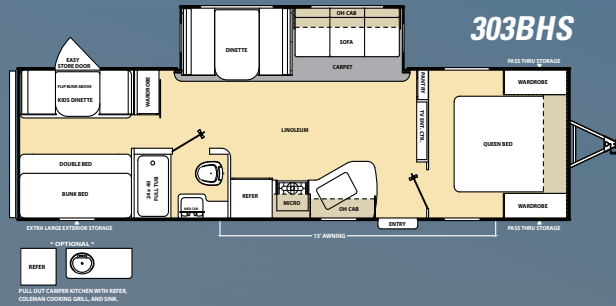
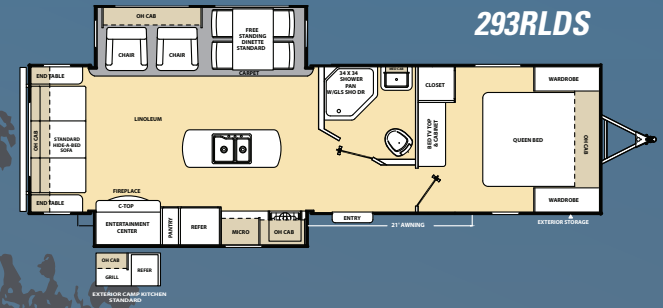
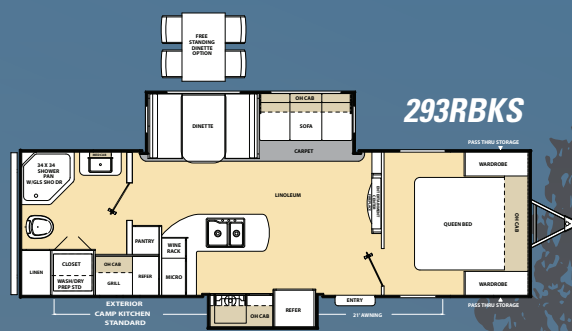
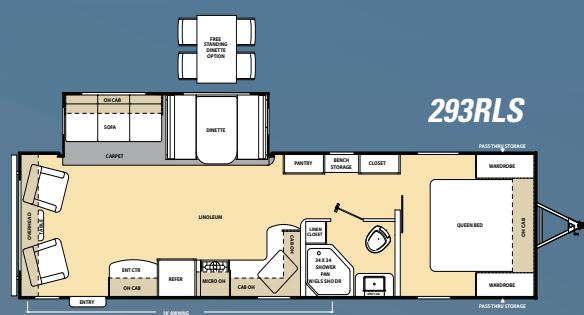


293QBCK



| MODEL | 223FB | 233DS | 243RBS | 253RKS | 263RLS | 273BH | 273DBS | 283DDS | 283RKS | 293QBCK |
|-----------------------------|-----------|-----------|-----------|-----------|-----------|-----------|-----------|-----------|-----------|-----------|
| UVW | 4,262 | 5,687 | 5,702 | 5,442 | 6,052 | 4,688 | 6,138 | 6,256 | 6,449 | 6,760 |
| Carrying Capacity | 2,738 | 1,913 | 1,898 | 2,058 | 1,648 | 2,312 | 1,562 | 1,444 | 2,751 | 2,740 |
| GVWR | 7,000 | 7,600 | 7,600 | 7,500 | 7,700 | 7,000 | 7,700 | 7,700 | 9,200 | 9,500 |
| Hitch Weight | 564 | 614 | 687 | 690 | 718 | 541 | 738 | 785 | 735 | 810 |
| Exterior Height (with A/C) | 10' 7" | 11' 1" | 11' 1" | 10' 7" | 11' 1" | 10' 7" | 11' 1" | 11' 1" | 11' 1" | 11' 1" |
| Fresh Water Capacity (gal.) | 46 | 46 | 46 | 46 | 46 | 46 | 46 | 46 | 46 | 46 |
| Grey Water Capacity (gal.) | 40 | 40 | 40 | 40 | 40 | 40 | 40 | 40 | 70 | 40 |
| Waste Water Capacity (gal.) | 30 | 30 | 30 | 30 | 30 | 30 | 30 | 30 | 30 | 30 |
| Awning Length | 15' | 15' | 15' | 18' | 15' | 15' | 15' | 18' | 15' | 18' |
| Wheel Size | 14" | 15" | 15" | 14" | 15" | 14" | 15" | 15" | 15" | 15" |
| Exterior Length | 26' 2" | 28' 10" | 27' 11" | 28' 4" | 29' 10" | 29' 3" | 30' 3" | 31' 7" | 32' 6" | 33' 5" |
| Exterior Width | 96" | 96" | 96" | 96" | 96" | 96" | 96" | 96" | 96" | 96" |
| Interior Height (Coach) | 81" | 81" | 81" | 81" | 81" | 81" | 81" | 81" | 81" | 81" |
| Axles | 3500 lbs. | 3500 lbs. | 3500 lbs. | 3500 lbs. | 3500 lbs. | 3500 lbs. | 3500 lbs. | 3500 lbs. | 4400 lbs. | 4400 lbs. |

*70 with camp kitchen. Please see back cover for additional information on weights.



| MODEL | 293RLS | 293RBKS | 293RLDS | 303BHS | 323BHDS CK | 323TSQB | 333RETS | 333BHKS CK | 343QBDS |
|-----------------------------|-----------|-----------|-----------|-----------|------------|-----------|-----------|------------|-----------|
| UVW | 6,572 | 6,760 | 7,230 | 6,407 | 7,690*** | 8,190 | 7,980 | 8,230 | 6,970 |
| Carrying Capacity | 2,869 | 2,240 | 2,270 | 2,534 | 1,810 | 2,410 | 2,520 | 2,570 | 2,471 |
| GVWR | 9,500 | 9,000 | 9,500 | 9,000 | 9,500 | 10,900 | 10,500 | 10,800 | 9,500 |
| Hitch Weight | 775 | 780 | 911 | 935 | 790 | 990 | 800 | 900 | 860 |
| Exterior Height (with A/C) | 11' 1" | 11' 1" | 11' 1" | 11' 1" | 11' 1" | 11' 3" | 11' 1" | 11' 1" | 11' 1" |
| Fresh Water Capacity (gal.) | 46 | 46 | 46 | 46 | 46 | 46 | 46 | 46 | 46 |
| Grey Water Capacity (gal.) | 40 | 40 | 40 | 40 | 40* | 40 | 40 | 80** | 40 |
| Waste Water Capacity (gal.) | 30 | 30 | 30 | 30 | 30 | 30 | 30 | 30 | 30 |
| Awning Length | 18' | 21' | 21' | 15' | 21' | 18' | 14' | 21' | 18' |
| Wheel Size | 15" | 15" | 15" | 15" | 15" | 15" | 15" | 15" | 15" |
| Exterior Length | 33' 11" | 30' 11" | 33' 9" | 33' 5" | 35' 10" | 36' 4" | 35' 10" | 36' 9" | 35' 8" |
| Exterior Width | 96" | 96" | 96" | 94" | 96" | 96" | 96" | 96" | 96" |
| Interior Height (Coach) | 81" | 81" | 81" | 81" | 81" | 81" | 81" | 81" | 81" |
| Axles | 4400 lbs. | 4400 lbs. | 4400 lbs. | 4400 lbs. | 4400 lbs. | 5000 lbs. | 5000 lbs. | 5000 lbs. | 4400 lbs. |

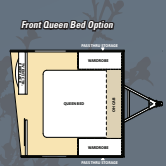
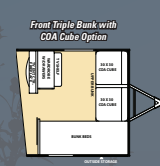
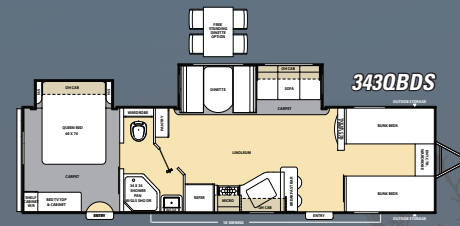
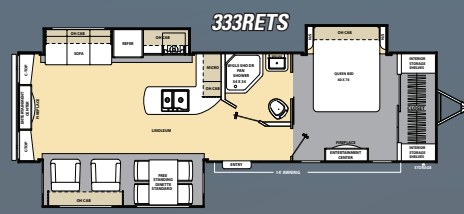
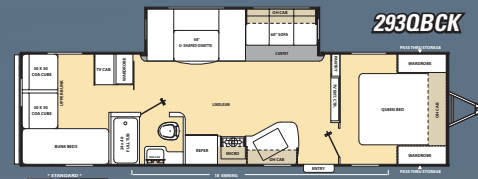
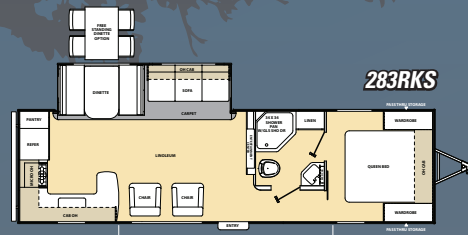
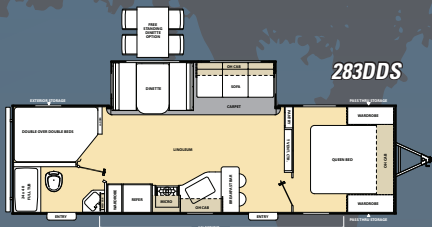
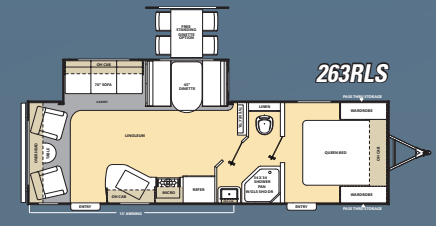
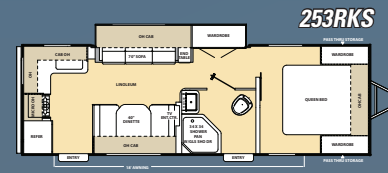
*70 with camp kitchen **110 with camp kitchen *** Shipping weight includes full size camp kitchen, Please see back cover for additional information on weights.

LEGACY EDITION

A Proud History of Quality and Value..... A Brand That You Can Trust!

Coachmen RV products have been on the US roads and highways since 1964. The first Coachmen RV products were manufactured in a 5,000 square foot plant in downtown Middlebury, Indiana. Coachmen's first year of production included 12 travel trailers, a single truck camper, and 80 truck caps. Since that time, over 600,000 Coachmen Recreational Vehicles have been produced.

The Legacy continues here at Coachmen with over 50 years of RV Manufacturing! Catalina would like to reward our outstanding Dealers and Customers for their continued business! There is no better way to reward you than with the Legacy Edition Package! Our Legacy Edition Package will only be offered in the 11 select floor plans below. All of our best options have been combined into a FREE Legacy Edition Package. At Coachmen Catalina, we overtly express our gratitude to those who have already become a part of the Coachmen Family and warmly welcome those future campers that choose Coachmen Products. Thank you for your business!



See Specification tables on previous pages for more information.

The Legacy Begins....



LEGACY EDITION PACKAGE

Qualifying units will be clearly marked with Legacy Edition decals and a date of manufacture on or after August 1, 2015. (Limited time offer.)



FREE

32" Flat Screen TV



FREE

Swing Arm TV Bracket



FREE

Multi Media Sound System
w/ DVD and CD radio w/USB



FREE

Skylight above
Tub/Shower



FREE

Stainless Steel Range with
Oven IPO 3 Burner Cooktop



FREE

Power Tongue Jack with
LED Hitch Light



FREE

Power Electric Awning with
Integrated LED Light



FREE

Outside Shower with
Head Mount



FREE

Diamond Plate
Rock Guard



FREE

Solar Panel Prep
(Panel sold separately)



FREE

Rear Vision Camera Prep
(Camera sold separately)

More Wattage for Your Cottage Audio Upgrade



2 Marine Grade Speakers
Dedicated to the Multi-Media
Sound System. Situated High
On the Unit for Optimal Sound
Projection.

2 Marine Grade Speakers
at a Comfortable Height for
Watching TV Outside.

Exterior TV Mount

110V AC, Cable Hookup and
Dedicated Audio Hookups for
Exterior TV Speakers

FREE

This system requires a TV with speaker amplification for use of outside speakers. (Available through Catalina parts department (574)-825-8356 or (574)-825-8653)



FREE ONE YEAR MEMBERSHIP

Big benefits for new owners

Coachmen is proud to sponsor the largest manufacturer sponsored camping club in North America ... Coachmen Owners' Association (COA). COA provides a broad breadth of value propositions for our owners including: planned trips/ tours and rallies at bulk rate discounts, free trip routing, free campground directory, free Easy RVing magazine, theme park discounts, fuel discounts, mail forwarding, a dedicated COA web site, local and state club activities and Caravan Chapter membership opportunities. Most importantly, COA enhances the Coachmen ownership and RV lifestyle experience. Every new Coachmen RV buyer is eligible for a 1 Year **FREE** membership in the Coachmen Owners' Association. It all adds up to an easy ownership experience!

Travel Easy™ Roadside Assistance

RVing is easier with Coachmen's Travel Easy™ Roadside Assistance provided **FREE** the first year of ownership to those who purchase a New Coachmen RV. Administered by Coach-Net, this service provides you with 24/7 operational, technical and emergency road service coverage. Also included is towing, fuel delivery, jump starts, lockout service, tire changes, mobile mechanic and unlimited technical assistance. Anywhere. Anytime. Travel Easy™ is the security of knowing that help is an easy phone call away.



All information contained in this brochure is believed to be accurate at the time of publication. However, during the model year, it may be necessary to make revisions and Forest River, Inc., reserves the right to make all such changes without notice, including prices, colors, materials, equipment and specifications as well as the addition of new models and the discontinuance of models shown in this brochure. Therefore, please consult with your Forest River, Inc., dealer and confirm the existence of any materials, design or specifications that are material to your purchase decision.

To learn more about Coachmen RV and our products and see how Coachmen is leading the great outdoors, visit www.coachmenrv.com



Coachmen
Leader to the Great Outdoors.

Coachmen RV
Catalina Division
423 N. Main St.
P.O. Box 30
Middlebury, IN 46540



Learn More
Scan this barcode using a QR Reader on your smart phone to learn more about Forest River.



A Berkshire Hathaway company.



Forest River, Inc. encourages our customers to purchase their Forest River products from a local dealership whenever possible for the following reasons:

- 1) Forest River, Inc. dealers are independently owned and operated businesses so priority service and scheduling is at their discretion and is often provided to customers that purchased their unit at that dealership.
- 2) Purchasing locally allows customers to establish meaningful relationships with a dealer, enhancing the RV experience through assistance with product questions, user tips or RV regulations for your state or country, and much more!
- 3) Canadian customers must meet requirements to bring an RV purchased out of the country to their home. These requirements may involve additional inspections and certifications, taxes and fees. Your local Canadian Dealer is a professional at meeting these requirements.
- 4) Scheduling timely warranty repairs and adjustments through a local dealership provides far greater flexibility and convenience to you, the customer!

It is the goal of Forest River, Inc. that all of our RV owners fully enjoy the RV experience and that customer satisfaction meets or exceeds their expectations!

GVWR (Gross Vehicle Weight Rating) - is the maximum permissible weight of the unit when fully loaded. It includes all weights, inclusive of all fluids, cargo, optional equipment and accessories. For safety and product performance do NOT exceed the GVWR.

GAWR (Gross Axle Weight Rating) - is the maximum permissible weight, including cargo, fluids, optional equipment and accessories that can be safely supported by a combination of all axles.

UVW (Unloaded Vehicle Weight)* - is the typical weight of the unit as manufactured at the factory. It includes all weight at the unit's axle(s) and tongue or pin and LP Gas. The UVW does not include cargo, fresh potable water, additional optional equipment or dealer installed accessories.

*Estimated Average based on standard build optional equipment.

CCC (Cargo Carrying Capacity)** - is the amount of weight available for fresh potable water, cargo, additional optional equipment and accessories. CCC is equal to GVWR minus UVW. Available CCC should accommodate fresh potable water (8.3 lbs per gallon). Before filling the fresh water tank, empty the black and gray tanks to provide for more cargo capacity.

** Estimated average based on standard build optional equipment

Each Forest River RV is weighed at the manufacturing facility prior to shipping. A label identifying the unloaded vehicle weight of the actual unit and the cargo carrying capacity is applied to every Forest River RV prior to leaving our facilities. The load capacity of your unit is designated by weight, not by volume, so you cannot necessarily use all available space when loading your unit.

YOUR CATALINA DEALER

