

Bigfoot



MESSAGE FROM THE PRESIDENT

We are constantly striving to develop and build the highest quality Products possible, yet we are always looking for ways to improve. We have introduced several new designs as well as incorporating suggestions from our Dealers and from you, our Valued Customers.

Team Bigfoot is committed to producing quality Bigfoot Products. The honesty, integrity and dedication shown every day at Bigfoot Industries makes me proud to be a part of the Bigfoot Family.

We, at Bigfoot are so appreciative of your continuing support. We are excited that together we can embrace the new millennium.

May the memories you make in your Bigfoot R.V. all be wonderful ones.

Sincerely,



Sharon Mayall
President



Head Office and Production
Facility, October 1999
Armstrong, B.C.



Company History & Profile

Bigfoot Industries was founded in 1977 by Terry Mayall, and two partners who were interested in developing Recreational Vehicles for the future. Terry was the originator of the initial design concept of the Bigfoot molded fiberglass units, which still provides the uniqueness portrayed in the Bigfoot units produced today. Utilizing the experience he gained from being in the fiberglass boat business, Terry started manufacturing recreational vehicles with a fiberglass molded top and bottom section that fit together to form a sturdy, very durable, weatherproof unit. The first product that Terry developed was the seventeen-foot Travel Trailer and then proceeded to prototype the first molded fiberglass Truck Camper. These units were readily accepted in the RV market place and Bigfoot became known as one of the leaders in the Truck Camper industry.

In 1987, Terry Mayall sold his interest in Bigfoot Industries and founded his own company called Leisure Coachworks Ltd., which allowed Terry the opportunity to apply these new found construction techniques to Fifth Wheels and Class 'C' Motorhome products.

In 1990, Terry Mayall and his partner Jordy Howell purchased the assets of Bigfoot Industries and brought both companies together under the leadership and

direction of Terry. In 1993, Bigfoot Industries and Leisure Coachworks Ltd. were amalgamated to form Bigfoot Industries Inc. as it exists today. Bigfoot Industries Inc. has continued to utilize the latest technology available in product development and production methods, in an effort to meet or exceed the marketplace demands.

In 1995, Bigfoot Industries Inc. moved into a new facility in Armstrong, British Columbia to accommodate the increased product demand that had been realized over the past several years. The new facilities allowed Bigfoot the opportunity to expand the fiberglass production area and incorporated three separate production lines to produce motorized units, towable units and truck campers.

In 1996, to facilitate the ever-increasing product demand, Bigfoot Industries expanded once again and opened a new production facility in Boardman, Oregon. The Boardman facility currently produces truck campers, while the Armstrong facility provides the purchasing and administration functions for both locations.

Bigfoot Industries Inc. takes pride in providing you the customer with a quality product at an affordable price, while incorporating the latest technology with quality workmanship.

3000 Series Motorhomes



30 MH 29 RQ Motorhome

Bigfoot 3000 Series Motorhomes have numerous quality features that are unsurpassed by other products in the RV Industry. The patented Fibercore® Wall System is unique to the RV Industry and provides superior insulation values by utilizing a polyurethane insulation material that is injected under very high pressure into the wall, roof and floor cavity while being secured in a large press mold.

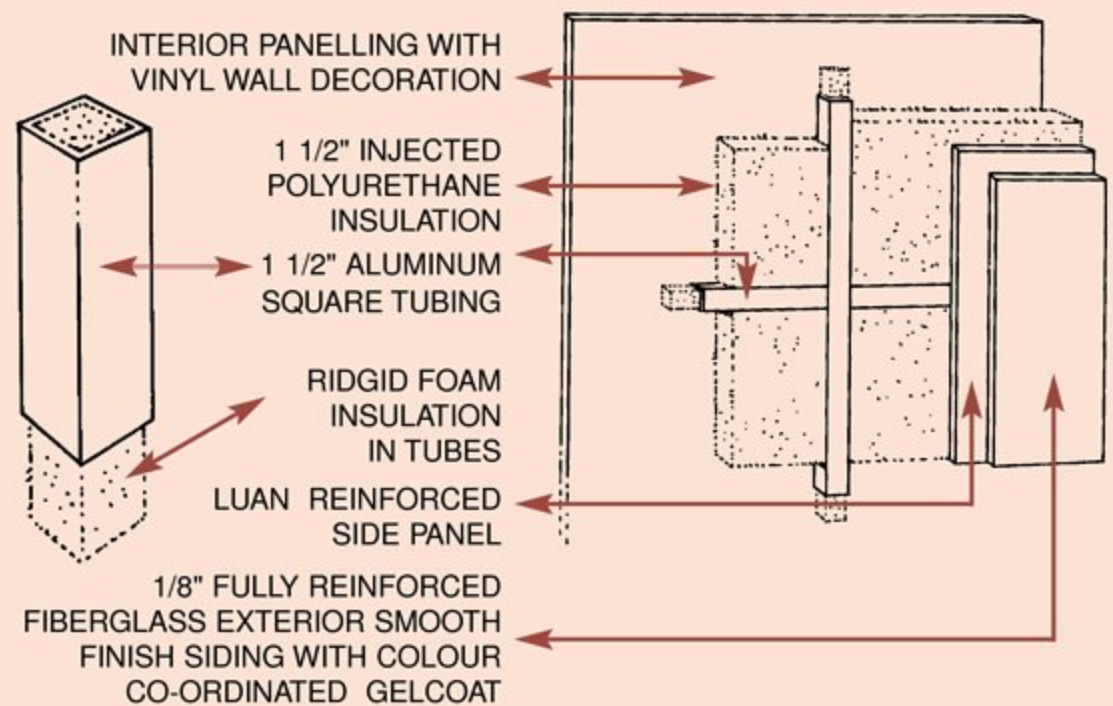
However good the walls and roof are manufactured, you are still dependent on other items, such as windows to create and maintain a comfortable climate in your Motorhome. For that reason, we offer an optional Winter Package that includes an auxiliary rear heater, additional deep cycle battery, motoraid hot water heater and thermal pane-sliding windows. The fresh water and wastewater holding tanks are enclosed, insulated and heated providing total functionality in either Arctic or Desert climates. A Bigfoot Motorhome truly keeps you warm in the winter and cool in the summer.

The enormous basement storage compartments or the unique garage compartment will safely store your skis, fishing rods, golf clubs, sail boards, lawn chairs or just about anything else you require for your leisure activities.

The interior design of the 3000 Series Motorhomes offer top quality fabrics with contemporary colours that will make you feel at home immediately. There are three distinct floor plans to choose from and three different colour coordinated interior decors to accommodate the most avid Rver's requirements.

The full fiberglass exterior and seamless rubber roof will give you many worry free years of enjoyment and the low maintenance exterior will keep your Bigfoot Motorhome looking like new for many years to come.

Leading Technology Sidewall Construction



- The unique combination of lightweight aluminum tubing and injected polyurethane insulation results in a light weight/high strength wall that is unparalleled in today's RV industry. A laminated wall using pre-cut insulation panels glued together would never give such a homogenous wall panel as our unique Fibercore® procedure.
- The aluminum tubes are also filled with polystyrene insulation. This eliminates the forming of a "Cold Bridge" at the location of the tubes. The result is better heat control and there will be no "sweating" or "frosty" walls. As a result there will be no corrosion from condensation inside the tubes resulting in a virtually unlimited lifetime.

Bigfoot

3000 Series Motorhome

CONSTRUCTION

Exterior

- One piece fiberglass Fiberglass® bonded sidewalls with 1 1/2" polyurethane insulation (R=12)
- One piece Fiberglass® bonded ceiling with 1 1/2" polyurethane insulation (R=12)
- One piece rubber roof
- Double floor system with top floor (R=12) and lower floor (R=8)
- Molded fiberglass front and rear caps
- Safety glass radius windows with screens
- Heated and enclosed holding tanks
- ✓ **Smoked lenses on all roof vents**
- Radius corner entrance door c/w: screen and deadbolt lock
- Insulated fiberglass baggage compartment doors
- Large under floor storage compartments
- ✓ **Fiberglass running boards**
- ✓ **Trailer hitch (Class II)**

Interior

- Washable vinyl wall paneling
- Marine quality fabric headliner
- Face framed, double screwed oak styled cabinets
- Oak trimmed laminate counter and table top
- Lap belts and 3-point shoulder belts on dinette
- ✓ **Day/Night shades**

KITCHEN AND APPLIANCES

- 3 Burner high output range top
- Two way - 6 cu.ft. refrigerator (LP/120V)
- 31,000 BTU forced air furnace with electronic ignition
- Venetian blind for kitchen window
- Monitor panel and power rangehood
- White acrylic double sink c/w: sink lid/cutting board

SAFETY

- Smoke detector
- Propane detector
- ✓ **Carbon monoxide detector**
- Fire extinguisher

ELECTRICAL

- Electrical 120V / 30 Amp service
- 45 Amp DC power converter c/w: 45 Amp battery charger
- Pre-wire for roof A/C and microwave
- Deep cycle battery c/w: battery disconnect switch

PLUMBING

- City water hook up
- 12Volt Demand water pump system
- Molded fiberglass bathtub with hand held shower head, vanity and towel racks
- Water heater by-pass system
- RV antifreeze pickup system
- Outside shower c/w: winterizing valves
- Marine toilet
- Heated dump valve compartment
- Hot water heater with (6gal/23ltr) tank

STANDARD OPTION PACKAGE:

✓ **Black tank rinse system**

- Electric step
- Electronic ignition hot water heater
- Generator ready c/w: hour meter
- Hidden TV antenna c/w: TV booster, outside cable hookup and satellite pre-wire
- Microwave
- Rack and ladder
- Rear axle air bags (N/A 30-MH24DB)
- Skylight in bathroom (N/A 30-MH24DB)
- Skylight in livingroom c/w: pleated shade
- Stereo AM/FM cassette c/w: four speakers and antenna
- Wheel simulators, stainless steel

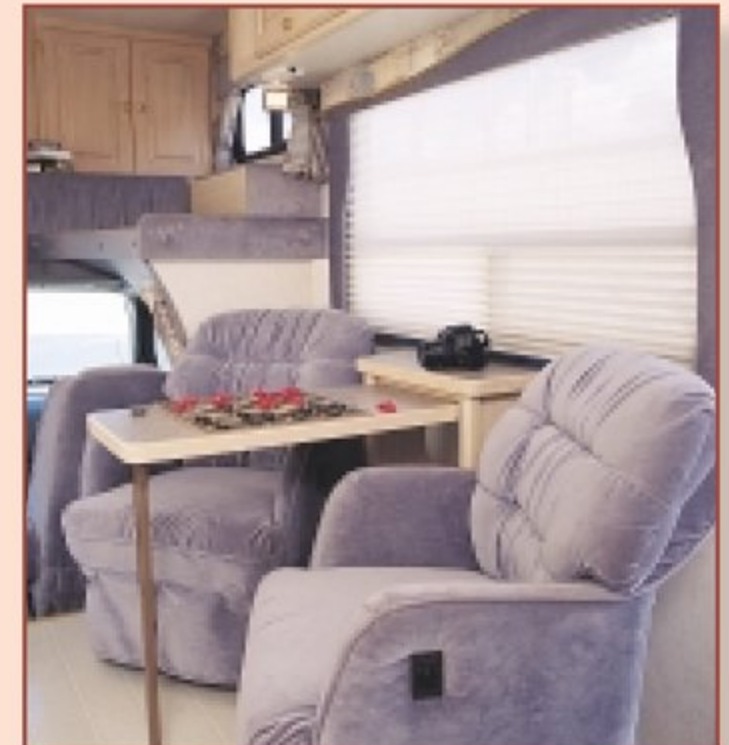
✓ **New for 2000 Model Year**



Galley - 24DB c/w: Flip-up Counter



29 RQ - Under Bed Storage



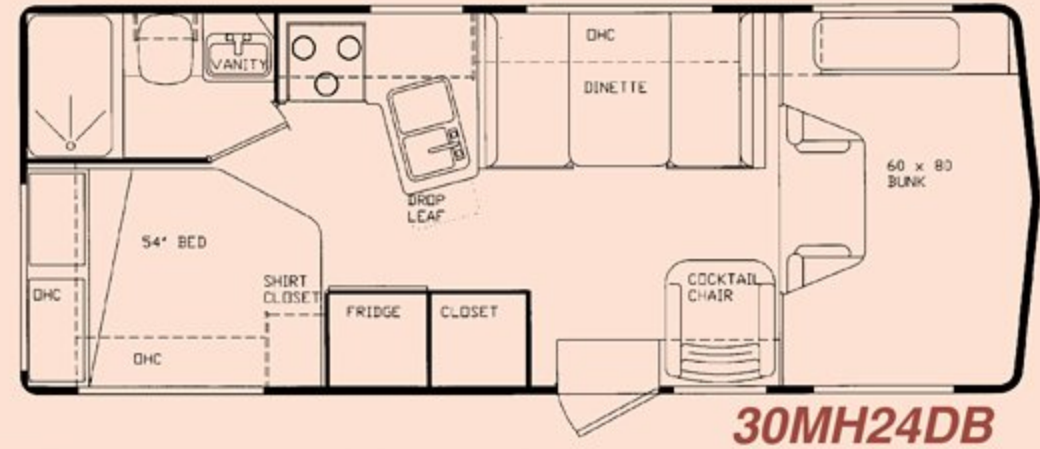
29 RQ - Cocktail Chairs
In Lieu of Sofa

Bigfoot

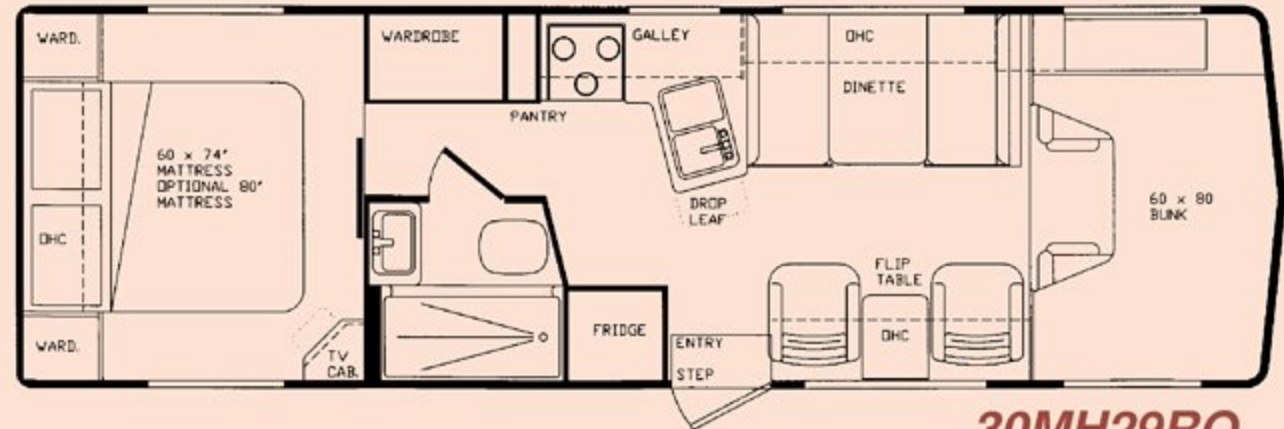
3000 Series Motorhome



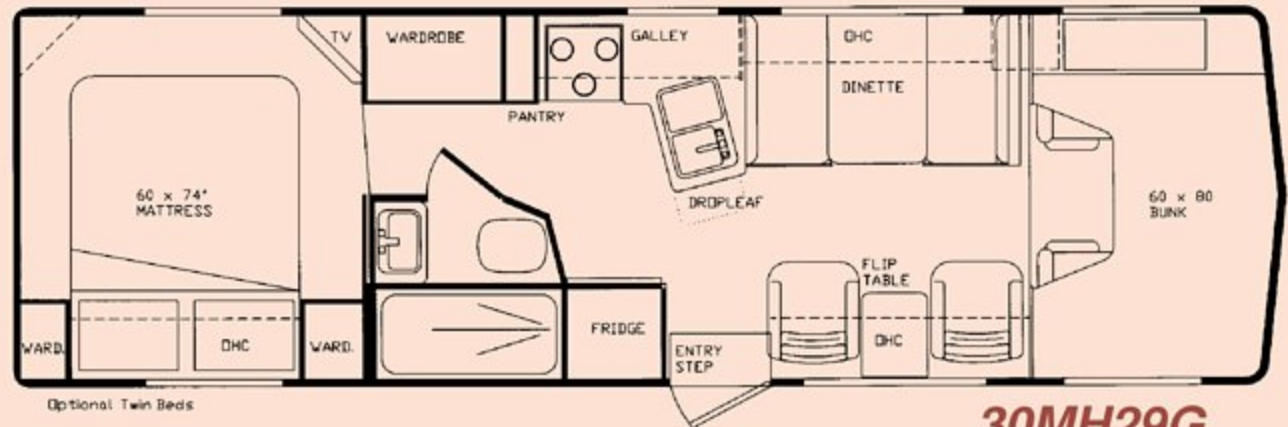
24 DB - Exterior Storage Compartment



30MH24DB



30MH29RQ



30MH29G



29 RQ - Generator & Outside Shower

Base Specifications	Units		30MH24DB		30MH29RQ		30MH29G	
Overall Length	ft./in.	mtr	24'-8"	7.52	29'-8"	9.04	29'-8"	9.04
Overall Height*	ft./in.	mtr	10'-2"	3.10	10'-2"	3.10	10'-2"	3.10
Overall Height**	ft./in.	mtr	10'-9"	3.20	10'-9"	3.20	10'-9"	3.20
Overall Width	ft./in.	mtr	8'-4"	2.54	8'-4"	2.54	8'-4"	2.54
Interior Headroom	ft./in.	mtr	6'-4"	1.93	6'-4"	1.93	6'-4"	1.93
Wheel Base	in.	mtr	158"	4.13	200"	5.08	200"	5.08
Dry Weight***	lbs	kg	9880	4480	10850	4920	11360	5152
GVWR Front	lbs	kg	4600	2087	4600	2087	4600	2087
GVWR Rear	lbs	kg	9450	4287	9450	4287	9450	4287
GVWR	lbs	kg	14050	6373	14050	6373	14050	6373
GCWR	lbs	kg	20000	9072	20000	9072	20000	9072
Radial Tires	size		LT225/75R*16E					
Fuel Tank	US gal.	ltr	55	208	55	208	55	208
Fresh Water	US gal.	ltr	66	250	66	250	66	250
Grey Water	US gal.	ltr	30	116	30	116	30	116
Black Water	US gal.	ltr	22	85	22	85	22	85
Propane Gas Cap.	lbs	kg	91	41	91	41	91	41
Water Heater	US gal.	ltr	6	23	6	23	6	23
Furnace c/w: Elec. Ign.	BTU		31,000		31,000		31,000	
Refrigerator - 2 Way	cu.ft.	ltr	6	169	6	169	6	169

* Top of Fridge Vent

** Top of Air Conditioner

*** Base Features Only

POPULAR OPTIONS

**ASK YOUR DEALER FOR A COMPLETE LIST OF OPTIONS

- Carpet in Living Room (surged)
- Coffee Maker
- Ducted Roof Air Conditioner 13,500 BTU
- Electric Remote Mirrors – Heated
- Entertainment Center – Interior
- Entertainment Center – Exterior
- Fantastic Fan

- Generator – Onan 4.0kw
- Painted Skirts & Running Boards
- Raised Oak Fridge Inserts
- Rear View Camera System
- Recessed Box Awning
- Solar Energy Systems (RV22)
- Stereo AM/FM – CD Player

- Stereo AM/FM Cassette – CD Changer
- Television 20"
- Winter Package
 - c/w: Auxiliary Rear Heater
 - Deep Cycle Battery
 - Motoraid Hot Water Heater
 - Thermal Pane Windows

Bigfoot

3000 Series Campers



30 C10.11 FR Camper

The Bigfoot 3000 Series Truck Campers offer the same patented Fibercore® Wall System as the 3000 Series Motorhomes. The roof and floor are also constructed using the polyurethane injection method thereby creating a highly insulated four season Truck Camper. The fresh water and wastewater holding tanks are enclosed, insulated and heated allowing greater functionality for the winter sport enthusiasts.

Our innovative floorplans offer the largest wardrobes and bathrooms in the industry, and will provide you with that extra space that is always missing in other Truck Campers. Another Bigfoot first is the "Dry" bathroom with a separate shower offered in the 30C10.11 model.

The sleeping areas are equipped with queen size beds, (optional spring filled mattress available) which provides complete privacy and total comfort while sleeping or relaxing. The abundance of wardrobes and storage compartments allows you to take it all with you.

The spacious galley makes meal preparation a breeze with the 3-burner range top, double door fridge and double bowl white acrylic sink.

The exterior basement storage area provides safe and secure storage for ski's, fishing rods or just about anything you require for your leisure time activities.

The lengthy list of standard features and numerous options available makes it easy to design a Bigfoot Truck Camper to meet your specific lifestyle requirements.



Microwave
Oven



Optional
Fantastic Fan

Bigfoot

3000 Series Camper

CONSTRUCTION

Exterior

- One piece fiberglass Fibercore® bonded sidewalls with 1 1/2" polyurethane insulation (R=12)
- One piece Fibercore® bonded ceiling with 1 1/2" polyurethane insulation (R=12)
- One piece rubber roof
- Double floor system with top floor (R=12) and lower floor (R=8)
- Molded fiberglass front and rear caps
- Safety glass radius windows with screens
- Folding assist handle at entry
- Molded one piece propane storage and battery compartments
- Basement storage compartment
- ✓ **Radius corner baggage doors**
- Radius corner entrance door c/w: screen
- ✓ **Blocking for rear awning**
- Mechanical jacks, powder coated (2000 lb.)
- ✓ **Step bracket**

Interior

- Washable vinyl wall paneling
- Marine quality fabric headliner
- Face framed, double screwed oak styled cabinets
- Oak trimmed laminate counter and table top
- Queen size forward facing bed
- Large headroom in bunk area (42")
- ✓ **Smoked lenses on all roof vents**
- Shirt closet in bunk area
- Day/Night shades
- ✓ **Larger TV Cabinet**

KITCHEN AND APPLIANCES

- 3 Burner high output range top
- Two way - 6 cu.ft. refrigerator (LP/120V)
- 25,000 BTU forced air furnace c/w: electronic ignition
- Venetian blind for kitchen window
- ✓ **Monitor panel and power rangehood**
- White acrylic double sink c/w: sink lid/cutting board
- ✓ **Single lever faucet**
- Propane tank (20lb)

ELECTRICAL

- ✓ **Electrical 120V / 30 Amp service**
- ✓ **25 Amp DC power converter c/w: heavy duty battery charger**
- ✓ **Pre-wire for roof A/C and microwave**
- Battery ready
- ✓ **Electric jacks, pre-wire**
- Exterior lights (3)

PLUMBING

- City water hook up
- 12V Demand water pump system
- One piece molded fiberglass shower stall and dome, with hand held shower head
- Water heater by-pass system
- RV antifreeze pickup system
- Marine toilet
- Hot water heater with (6gal/23 ltr) tank
- Heated and enclosed holding tanks

SAFETY

- ✓ **19" x 38" Egress window in bunk area**
- Smoke detector
- ✓ **Propane detector**
- ✓ **Carbon monoxide detector**
- Fire extinguisher

STANDARD OPTION PACKAGE:

- ✓ **Auto change over propane regulator**
- ✓ **Bifold range cover**
- Deep oven c/w: 3 Burner high output rangetop
- Dual propane tanks (20 lb. ea.) c/w: overfill protection device valve
- Electronic ignition hot water heater
- ✓ **Hidden TV antenna c/w: TV booster, outside cable hookup and satellite pre-wire**
- Rack and ladder
- Skylight in shower (N/A 30-C10.3FR)
- Spring filled mattress (exchange)
- ✓ **Stereo pre-wire c/w four speakers and antenna**
- ✓ **New for 2000 Model Year**



30 C10.11 FR - Rear Awning



30 C10.11 FR - Bedroom



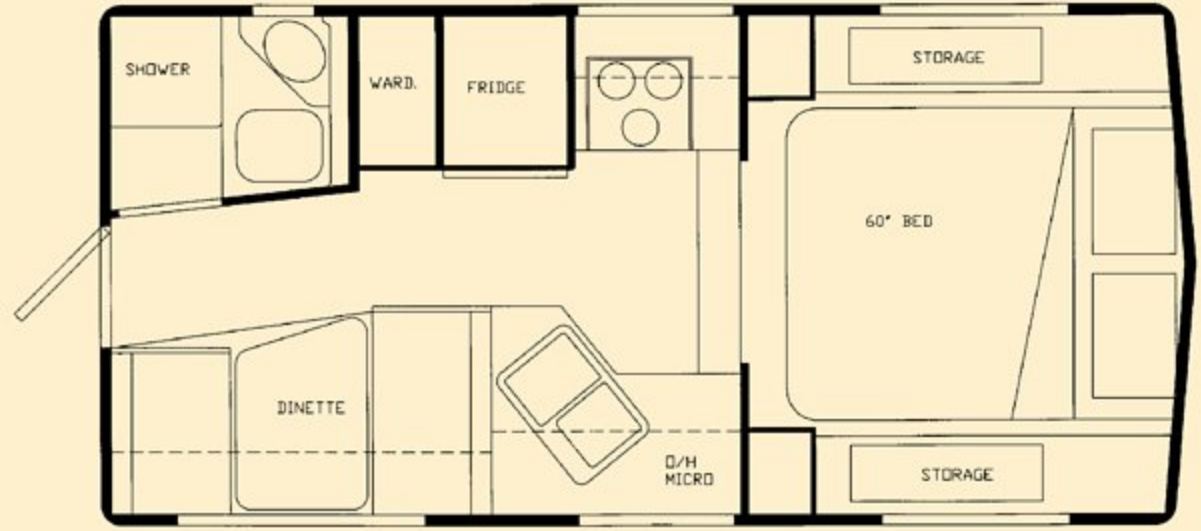
30 C10.11 FR - Closet

Bigfoot

3000 Series Campers



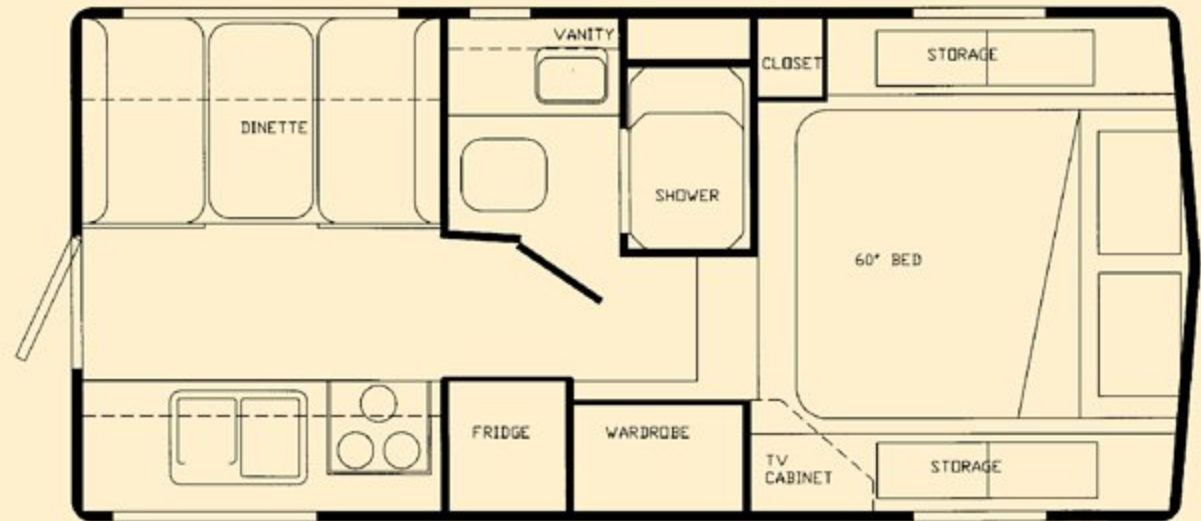
30 C10.11 - Interior Forward Shot



30C10.3



30 C10.11 - Basement Compartment



30C10.11



30 C10.11
Dually Bracket
- In Travel Position

Base Specifications	Units		30C10.3		30C10.11	
	ft./in.	mtr				
Overall Length	ft./in.	mtr	17'-6"	5.33	18'-4"	5.59
Overall Height*	ft./in.	mtr	8'-0"	2.44	8'-0"	2.44
Overall Width	ft./in.	mtr	8'-4"	2.54	8'-4"	2.54
Floor Length	ft./in.	mtr	10'-3"	3.12	10'-11"	3.33
Interior Headroom (min)	ft./in.	mtr	6'-4"	1.93	6'-4"	1.93
Dry Weight**	lbs	kg	2900	1315	3040	1379
Fresh Water	US gal.	ltr	37	143	38	147
Grey Water	US gal.	ltr	18	70	30	116
Black Water	US gal.	ltr	18	70	30	116
Propane Gas Cap.	lbs	kg	20	9	20	9
Water Heater	US gal.	ltr	6	23	6	23
Furnace c/w: Elec. Ign.	BTU		25,000		25,000	
Refrigerator - 2Way	cu.ft.	ltr	6	169	6	169

* Top of Fridge Vent

** Base Features Only

POPULAR OPTIONS

- Aluminum Framed Sidewalls
- Air Conditioner 7100 BTU
- Battery Disconnect Switch
- Dually Jack Brackets
- Electric/Remote Jacks

- Fantastic Fan
- Generator - Onan 2.5 kw
- Microwave Oven
- Rear Door Awning

- Skylight c/w: Pleated Shade
- Solar Energy System (RV22)
- Stereo AM/FM - CD
- Thermal Pane Windows
- Twin Beds

****ASK YOUR DEALER FOR A COMPLETE LIST OF OPTIONS**

Bigfoot

2500 Series Campers



25 C10.6 B Camper

The Bigfoot 2500 Series Truck Campers are the finest molded fiberglass campers available in the market today. The top and bottom section of the Campers are joined by only one overlapping body seam and fit together similar to the hull and deck sections of a boat. By using this type of construction, called "Monocoque" in the Marine Industry, it makes the Bigfoot 2500 Series one of the lightest basement models in the marketplace. The high quality fiberglass exterior ensures a long life for your camper with a minimum amount of maintenance, so you have time to enjoy your leisure activities.

The three interior decors, enhanced by the oak cabinetry, are the same designer quality as our 3000 Series products. Many items that are optional with other manufacturers are standard in the Bigfoot 2500 Series. These include such items as the forward facing queen bed, a 6 cu. ft. double door refrigerator, water heater by-pass/winterization system and the enclosed/insulated and heated holding tanks.

The 1 1/2" high density polystyrene insulation structure has an R8 insulation value, which allows you to camp at your favorite ski area or fishing area well into the winter months and maintain a comfortable interior temperature when equipped with the optional thermal pane windows. The 25,000 BTU furnace and optional 7,100 BTU air conditioner



Detail of the Top and Bottom Shell Construction for 2500 Series

will keep you comfortable on the coolest winter nights and the warmest summer days.

Your skis, fishing rods and lawn chairs can easily be stored in the large basement compartment, which comes standard with our 2500 Series Truck Campers. It contains a self-draining section to dispose of the melted snow from your skis. Another Bigfoot innovation is a trapdoor in the floor of the living area that allows you access to the basement compartment of your Bigfoot Camper.

Bigfoot

Bigfoot 2500 Series Camper

CONSTRUCTION

Exterior

- Light weight two piece full fiberglass exterior
- 1 1/2" high density EPS (polystyrene) insulation in floor, walls, and ceiling (R=8)
- Exclusive Winterwall® System
- Safety glass radius windows with screens
- Folding assist handle at entry
- Molded one piece propane storage compartment
- Basement storage compartment
- ✓ **Radius corner baggage doors**
- Radius corner entrance door c/w: screen
- ✓ **Blocking for rear awning**
- Mechanical jacks, powder coated (2000 lb.)

Interior

- Washable vinyl wall paneling
- Marine quality fabric headliner
- Face framed, double screwed oak styled cabinets
- Oak trimmed laminate counter and table top
- Queen size forward facing bed
- Large headroom in bunk area (42")
- Shirt closet in bunk area
- Day/Night shades

KITCHEN AND APPLIANCES

- 3 Burner high output range top
- Two way - 6 cu.ft. refrigerator (LP/120V)
- 25,000 BTU forced air furnace c/w: electronic ignition
- Venetian blind for kitchen window
- ✓ **Monitor panel and power rangehood**
- White acrylic double sink c/w: sink lid/cutting board
- ✓ **Single lever faucet**
- Propane tank (20lb)

ELECTRICAL

- ✓ **Electrical 120V / 30 Amp service**
- ✓ **25 Amp DC power converter c/w: heavy duty battery charger**
- ✓ **Pre-wire for roof A/C and microwave**
- ✓ **Battery ready**

PLUMBING

- City water hook up
- 12V Demand water pump system
- Molded fiberglass bathroom with vanity and hand held shower head
- Water heater by-pass system
- RV antifreeze pickup system
- Marine toilet
- Hot water heater with (6gal/23 ltr) tank
- Heated and enclosed holding tanks

SAFETY

- ✓ **19" x 32" Egress window in bunk area**
- Smoke detector
- ✓ **Propane detector**
- ✓ **Carbon monoxide detector**
- Fire extinguisher

STANDARD OPTION PACKAGE:

- ✓ **Auto change over propane regulator**
- ✓ **Bifold range cover**
- Dual propane tanks (20 lb. ea.) c/w: overfill protection device valve
- Electric jacks, pre-wire
- ✓ **Electronic ignition hot water heater**
- ✓ **Hidden TV antenna c/w: TV booster, outside cable hookup & satellite pre-wire**
- Oven c/w: 3 Burner high output rangetop
- Rack and ladder
- Spring filled mattress (exchange)
- ✓ **Stereo pre-wire c/w: two speakers and antenna**
- ✓ **New for 2000 Model Year**



25 C10.6 B Camper -Radius Corner Generator & Battery Compartment Doors

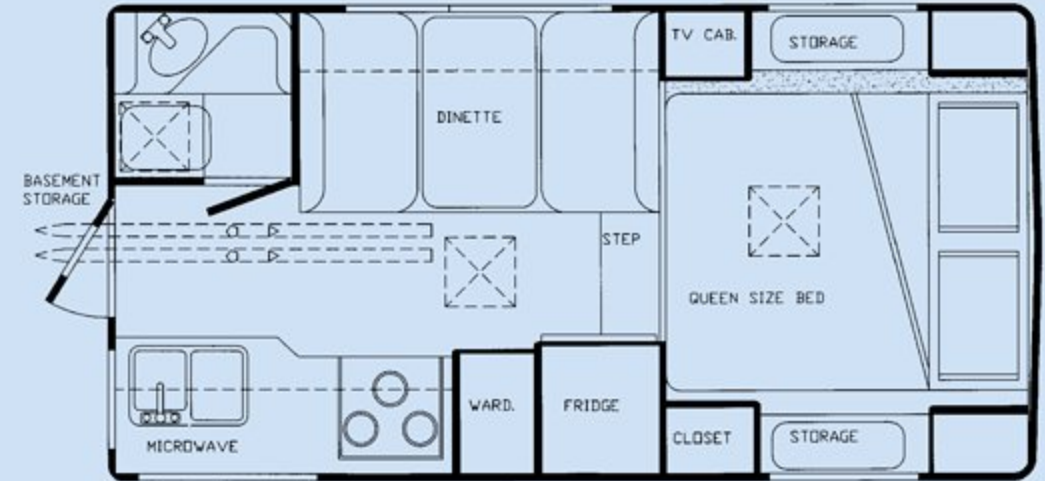


25 C9.6 B Camper - Interior Basement Trap Door

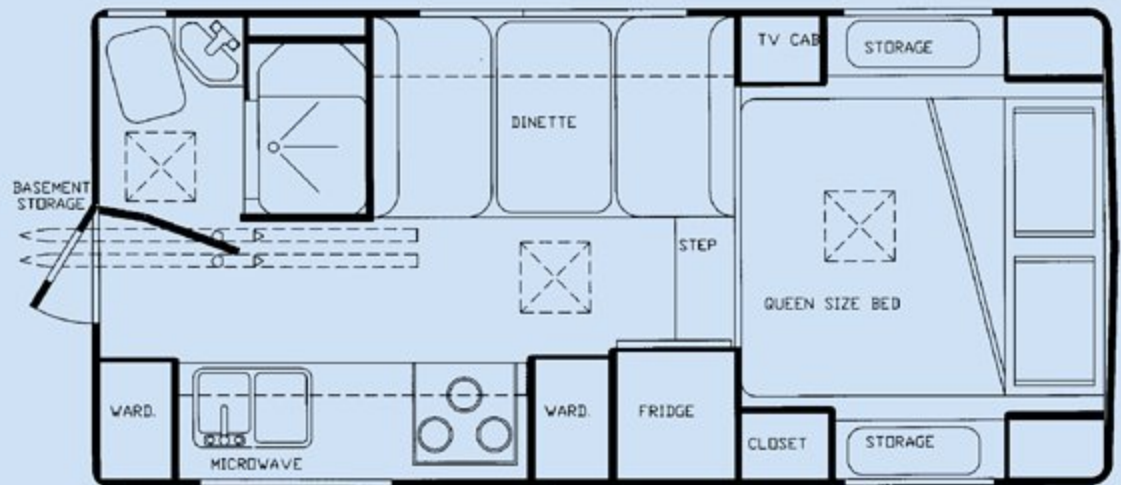
Bigfoot 2500 Series Campers



25 C10.6 B Camper - Interior Shot



25C9.6



25C10.6



25 C9.6 B Camper Rear Awning



Camper Jack with Remote Control



25 C10.6 B Camper Box Awning



Base Specifications	Units		25C9.6		25C10.6	
	ft./in.	mtr				
Overall Length	ft./in.	mtr	16'-6"	5.03	17'-11"	5.46
Overall Height*	ft./in.	mtr	7'-9"	2.36	7'-9"	2.36
Overall Width	ft./in.	mtr	7'-11"	2.41	7'-11"	2.41
Floor Length	ft./in.	mtr	9'-6"	2.90	10'-6"	3.20
Interior Headroom (min)	ft./in.	mtr	6'-4"	1.93	6'-4"	1.93
Dry Weight**	lbs	kg	2250	1021	2471	1120
Fresh Water	US gal.	ltr	23	89	50	189
Grey Water	US gal.	ltr	19	74	19	74
Black Water	US gal.	ltr	12	47	17	66
Propane Gas Cap.	lbs	kg	20	9	20	9
Water Heater	US gal.	ltr	6	23	6	23
Furnace c/w: Elec. Ign.	BTU		25,000		25,000	
Refrigerator - 2Way	cu.ft.	ltr	6	169	6	169

* Top of Fridge Vent

** Base Features Only

POPULAR OPTIONS

- Air Conditioner 7100 BTU
- Battery Disconnect Switch
- Convert-a-Bunk
- Dually Jack Brackets
- Electric/Remote Jacks
- Exterior Shower
- Fantastic Fan
- Generator – Onan 2.5 kw
- Microwave Oven
- Rear Door Awning
- Skylight c/w: Pleated Shade
- Solar Energy System (RV22)
- Stereo AM/FM – CD
- Thermal Pane Windows
- Twin Beds

**ASK YOUR DEALER FOR A COMPLETE LIST OF OPTIONS

Bigfoot

2000 Series Campers



20 C10.8SL Camper

We recognize that purchasing a recreational vehicle is an important decision and not everybody has the same requirements. If you are seeking quality and comfort at a competitive price, then the Bigfoot 2000 Series Truck Camper can make your desires a reality.

Fine craftsmanship and functional designs are a perfect example of the commitment to excellence that Bigfoot demands of every product they build.

The full fiberglass exterior and seamless roof will give you many worry free years of enjoyment and will keep your Bigfoot Truck Camper looking like new for many years to come.

The Bigfoot 2000 Series Truck Campers offer four unique floorplans including the newly introduced 20C10.8 Slide-out Model. In addition you have the choice of three professionally designed interior decors, two interior wood colors and three exterior graphic packages to match your truck.

The all-new 20C10.8 Slide-out floorplan provides you with ample interior space for the gourmet cook or the large family and gives you the choice of the regular dinette or the convenient flip over sofa, complete with removable dining table.

Every inch of space in a Bigfoot 2000 Series Truck Camper has a purpose and is utilized to provide you with



Rear View 20 C10.8SL

the maximum storage possible. The large basement storage compartment will safely store your skis, fishing rods, golf clubs, snow boards, lawn chairs or just about anything else you may require for your leisure time activities.

The heated and enclosed fresh water and wastewater holding tanks, standard in all Bigfoot 2000 Series Campers, provide you with the opportunity to enjoy an extended camping season and obtain better utilization of your camper.

Bigfoot

2000 Series Campers

CONSTRUCTION

Exterior

- One piece fiberglass Fiberglass® bonded sidewalls with 1" polyurethane insulation (R=8)
- One piece Fiberglass® bonded floor with 1" polyurethane insulation (R=8)
- 1" polystyrene insulation in ceiling, bench wall and t-wall (R=6)
- One piece rubber roof
- Molded fiberglass front and rear caps
- Safety glass radius windows with screens
- Rear window
- Folding assist handle at entry
- Molded one piece propane storage compartment
- Cab through window
- Radius corner entrance door c/w: screen
- Basement storage compartment
- Blocking for roof rack and ladder
- Blocking for rear awning
- Heated and enclosed tanks
- Mechanical jacks, powder coated (2000lb.)

Interior

- Washable vinyl wall paneling
- Marine quality fabric headliner
- Laminated table and counter top
- Motorhome type dinette, (N/A 20 C8.10)
- Large headroom in bunk area (39")
- Queen size forward bed

KITCHEN AND APPLIANCES

- 3 Burner high output range top
- Two way - 4 cu.ft. refrigerator (LP/120V)
- 16,000 BTU forced air furnace with electronic ignition
- Venetian blind for kitchen window
- Gravity rangehood
- White acrylic double sink
- Oak cabinet doors
- Propane tank (20lb)

ELECTRICAL

- Electrical 120V / 15 Amp service
- Porch light
- Power converter with "heavy duty" battery charger

PLUMBING

- City water hook up
- 12Volt Demand water pump system
- Molded fiberglass showerstall with vanity and hand held shower head
- Medicine cabinet
- Water heater by-pass system
- RV antifreeze pickup system
- Marine toilet
- Hot water heater with (6gal/23ltr) tank

SAFETY

- 20" x 26" Egress window in bunk area
- Smoke detector
- Propane detector
- Carbon monoxide detector
- Fire extinguisher

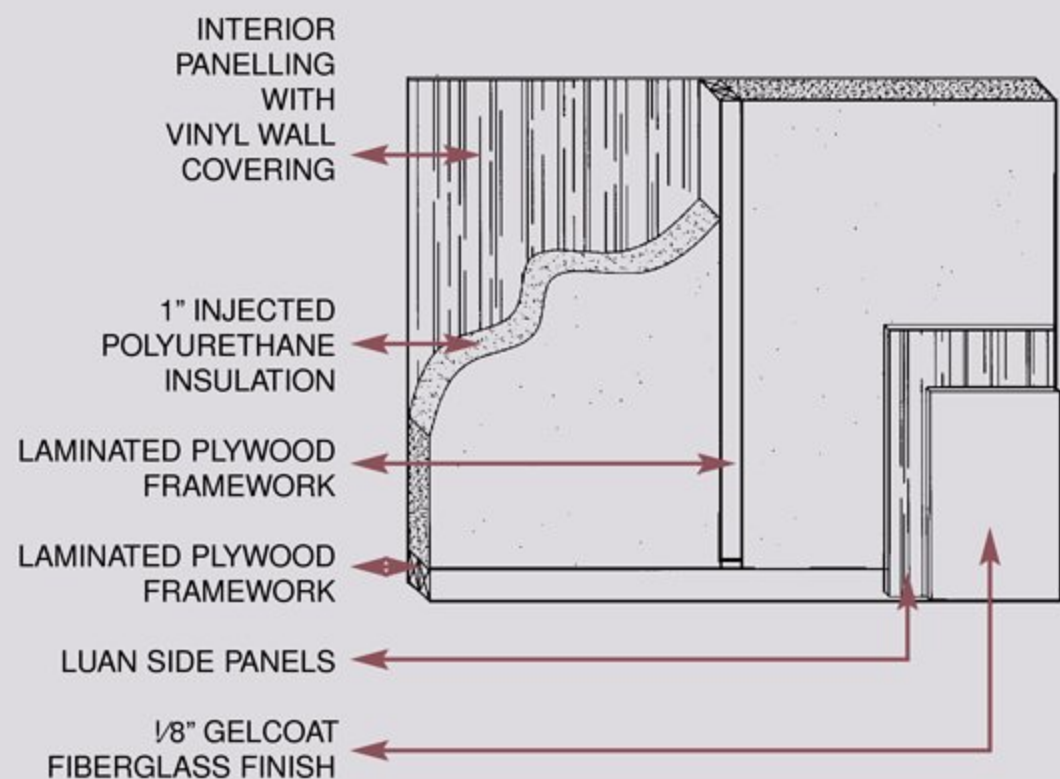
STANDARD OPTION PACKAGE: (8.10, 9.7, 10.7)

- *Battery ready*
- *Dual propane tanks (20lb ea.) c/w: overfill protection device valve*
- *Electrical 30Amp service, includes:*
 - *25Amp power converter*
 - *battery charger*
 - *14" x 14" roof vent*
 - *pre-wire for roof A/C and microwave*
- *Fridge upgrade - Two Way - 5 cu.ft.*
- *Hidden TV antenna c/w: TV booster, and outside cable hookup*
- *Monitor panel and power range hood*
- *Step bracket*

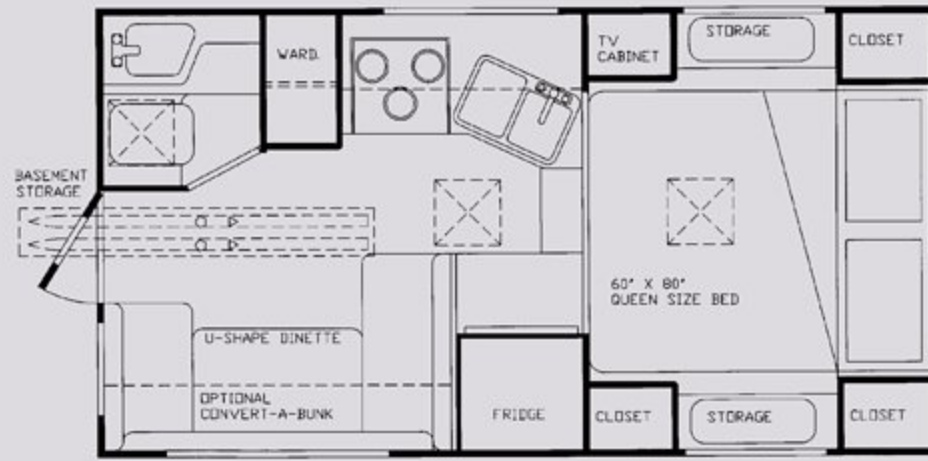
STANDARD OPTION PACKAGE: (10.8 SL only)

- *Battery ready*
- *Dual propane tanks (20lb ea.) c/w: overfill protection device valve*
- *Electrical 120V / 30Amp service, includes:*
 - *30 Amp power converter*
 - *30 Amp battery charger*
 - *14" x 14" roof vent*
 - *pre-wire for roof A/C and microwave*
- *Fridge upgrade - Two Way - 6 cu.ft.*
- *Outside shower c/w: winterizing valves*
- *Oven c/w: 3 Burner high output rangetop*
- *Step bracket*
- *Stereo AM/FM cassette*

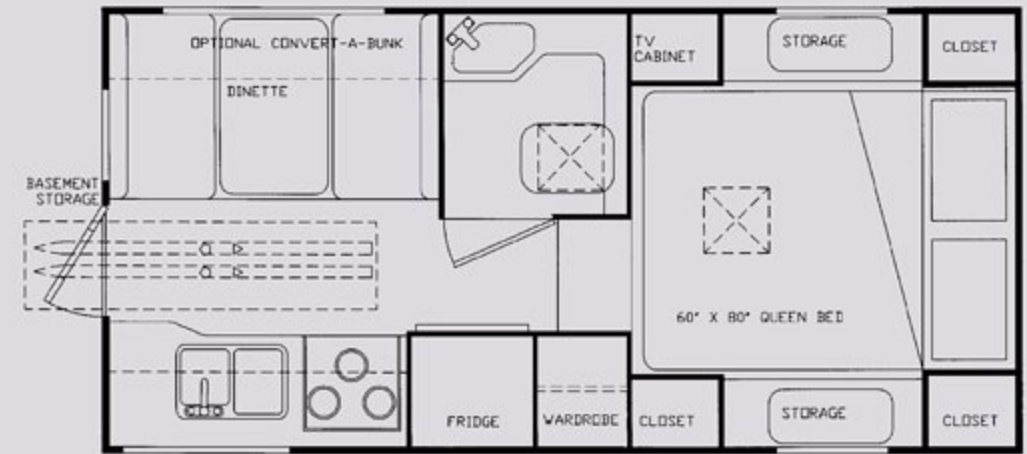
2000 Series Wall Construction



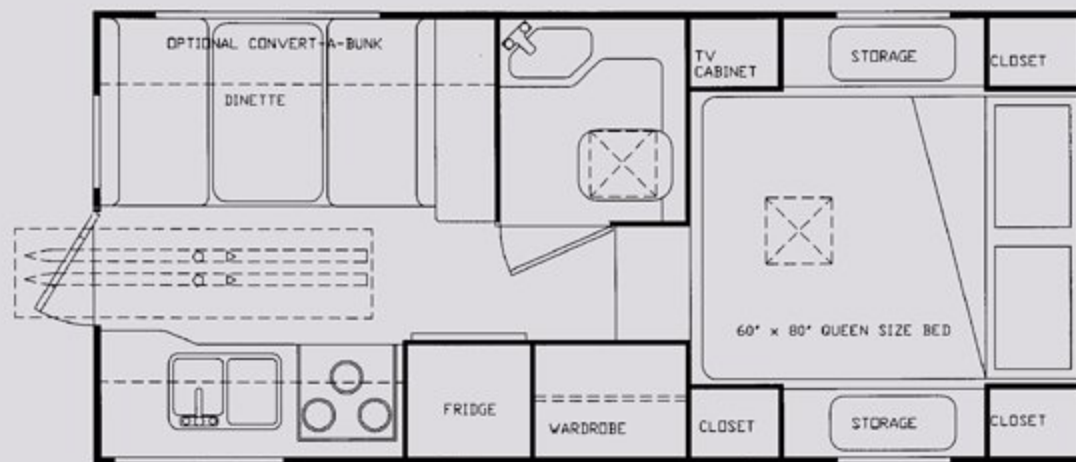
2000 Series Campers



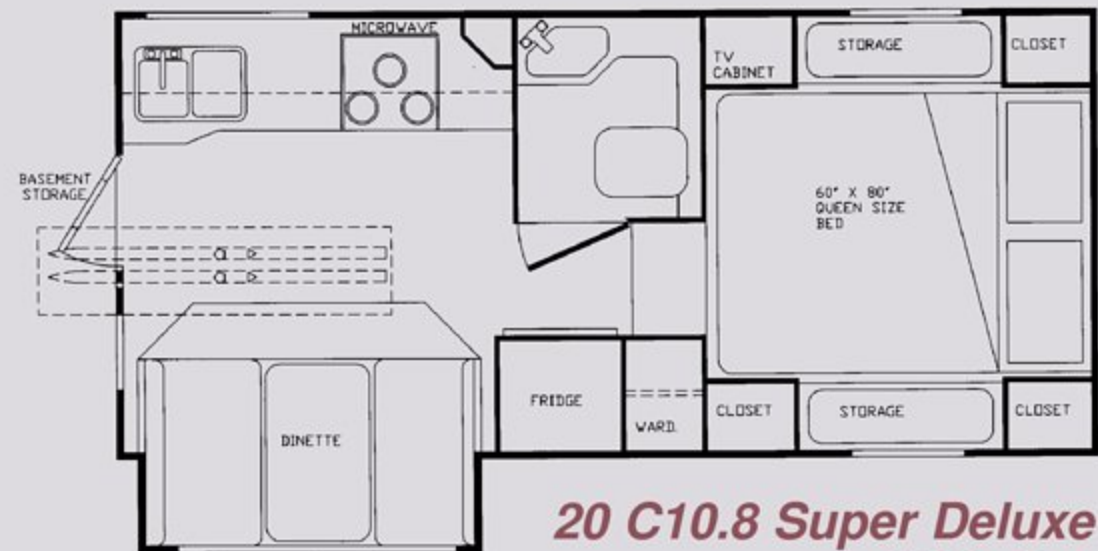
20 C8.10



20 C9.7



20 C10.7



20 C10.8 Super Deluxe Slide Out



Base Specifications	Units		20C8.10		20C9.7		20C10.7		20C10.8 Slide	
	ft./in.	mtr	ft./in.	mtr	ft./in.	mtr	ft./in.	mtr	ft./in.	mtr
Overall Length	ft./in.	mtr	16'-0"	4.87	16'-10"	5.13	17'-10"	5.43	17'-10"	5.43
Overall Height*	ft./in.	mtr	7'-9"	2.36	7'-9"	2.36	7'-9"	2.36	7'-9"	2.36
Overall Width	ft./in.	mtr	8'-0"	2.44	8'-0"	2.44	8'-0"	2.44	8'-0"	2.44
Floor Length	ft./in.	mtr	8'-10"	2.69	9'-7"	2.92	10'-7"	3.22	10'-7"	3.22
Interior Headroom (min)	ft./in.	mtr	6'-7"	1.91	6'-5"	1.91	6'-5"	1.93	6'-5"	1.93
Dry Weight**	lbs	kg	2140	971	2485	1127	2656	1205	2850	1293
Fresh Water	US gal.	ltr	28	106	37	143	37	143	37	143
Grey Water	US gal.	ltr	16	62	18	70	18	70	18	70
Black Water	US gal.	ltr	11	43	18	70	18	70	18	70
Propane Gas Cap.	lbs	kg	20	9	20	9	20	9	20	9
Water Heater	US gal.	ltr	6	23	6	23	6	23	6	23
Furnace c/w: Elec. Ign.	BTU		16,000		16,000		16,000		16,000	
Refrigerator - 2Way	cu.ft.	ltr	4	113	4	113	4	113	4	113

* Top of Fridge Vent

** Base Features Only

POPULAR OPTIONS

**ASK YOUR DEALER FOR A COMPLETE LIST OF OPTIONS

- Air Conditioner 7100 BTU
- Battery Disconnect Switch
- Electronic Ignition Water Heater
- Electric Jack Prewire
- Electric Jacks, c/w: Remote
- Exterior Shower
- Fluorescent Light Package
- Microwave Oven
- Rack & Ladder
- Rear Door Awning
- Skylight c/w: Pleated Shade
- Thermal Pane Windows
- Twin Beds

Bigfoot

1500 Series Campers



15 C8.2 FR Camper

The Bigfoot 1500 Series is the lightest and most aerodynamic of the Bigfoot Campers, which was first introduced in the late seventy's for the economy minded RV'er. The 1500 Series has evolved into today's low profile lightweight Camper that provides all the amenities and features of the 2500 Series and 3000 Series Campers without the additional weight. While other manufacturers often take short cuts in order to reduce the weight of their campers, Bigfoot weight reductions come through computer assisted design engineering which incorporates high quality construction components used in other industries.

Our unique "Monocoque" construction, similar to the 2500 Series, ensures a long life for your camper with a minimum amount of maintenance, so you have time to enjoy your leisure activities.

The 1" high density polystyrene insulation structure provides an R6 insulation value, and when equipped with the specially developed Winter Package (which includes thermal pane windows, a 16,000 BTU furnace upgrade, and heated and enclosed holding tanks) allows you to extend the camping season enough to enjoy your favorite ski slope or ice fishing area.



*Optional Electric Jacks
cw: Remote*

All the Bigfoot 1500 Series models utilize the same high quality appliances that are found in the 2500 Series and the 3000 Series models such as the optional 6 cu. ft. double door refrigerator, 3 burner high output rangetop, the white acrylic double sink (single sink in short box models), hot water heater with bypass and winterization system. The queen size forward facing bed is a very popular base feature in the 1500 Series models.

Bigfoot

1500 Series Camper

CONSTRUCTION

Exterior

- Light weight two piece full fiberglass exterior
- 1" high density EPS (polystyrene) insulation in floor, walls, and ceiling (R=6)
- Safety glass radius windows with screens
- Folding assist handle at entry
- Molded one piece propane compartment
- ✓ **Radius corner baggage doors**
- Cab through window
- Entrance door c/w: screen and deadbolt lock
- Blocking for roof rack and ladder
- ✓ **Blocking for rear awning**
- ✓ **Step bracket**

Interior

- Washable vinyl wall paneling
- Marine quality fabric headliner
- Face framed, double screwed oak styled cabinets
- Queen size forward facing bed
- Storage boxes on each side of bed
- Large headroom in bunk area (36")
- ✓ **Smoked lenses on all roof vents**
- Shirt closet in bunk area

KITCHEN AND APPLIANCES

- 3 Burner high output range top
- Two way - 4 cu.ft. refrigerator (LP/120V)
- 12,000 BTU forced air furnace c/w: electronic ignition
- Venetian blind for kitchen window
- ✓ **Monitor panel and power rangehood**
- White acrylic double sink c/w: sink lid/cutting board
- ✓ **Single lever faucet**
- Propane tank (20lb)

ELECTRICAL

- ✓ **Electrical 120V / 30 Amp service**
- ✓ **25 Amp DC power converter c/w: heavy duty battery charger**
- ✓ **Pre-wire for roof A/C and microwave**
- ✓ **Battery ready**
- ✓ **Power fan in bathroom**

PLUMBING

- City water hook up
- 12V Demand water pump system
- Molded fiberglass bathroom with vanity and hand held shower head
- Medicine cabinet
- Water heater by-pass system
- RV antifreeze pickup system
- Marine toilet
- Hot water heater with (6gal/23 ltr) tank

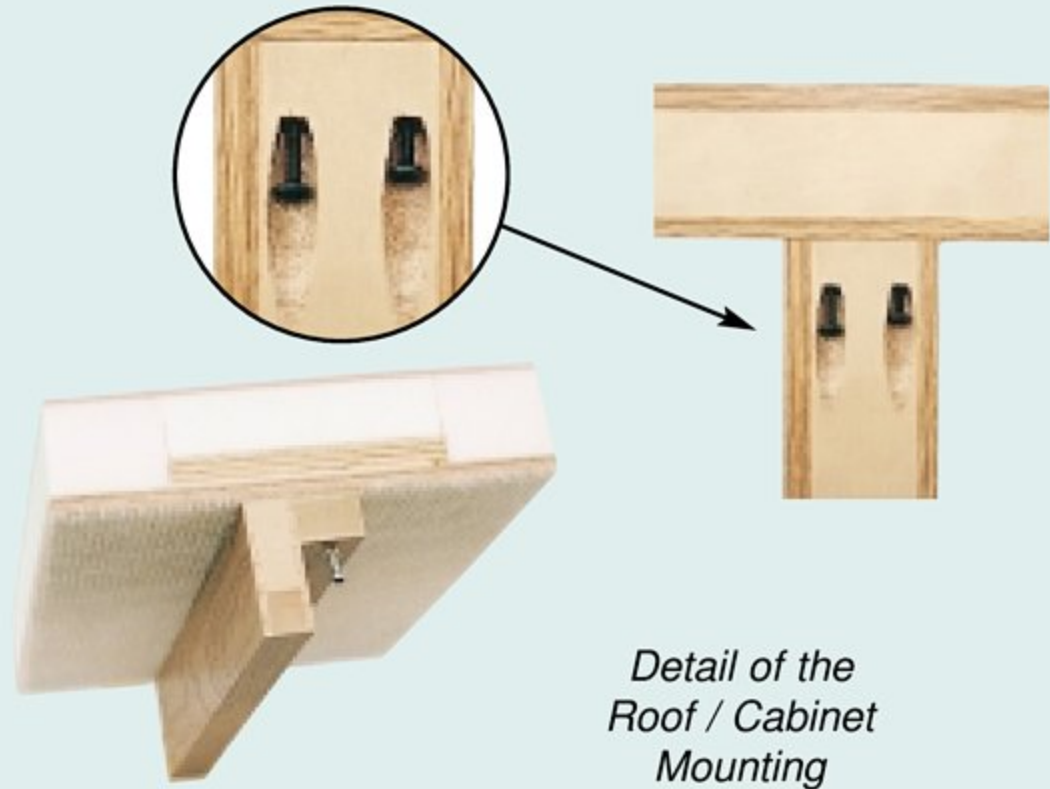
SAFETY

- 24" x 24" Escape hatch in bunk area
- Smoke detector
- ✓ **Propane detector**
- ✓ **Carbon monoxide detector**
- Fire extinguisher

STANDARD OPTION PACKAGE:

- ✓ **Bifold range cover**
- *Dual propane tanks (20 lb. ea.) c/w: overfill protection device valve*
- *Fridge upgrade - Two way - 6 cu. ft.*
- ✓ **Hidden TV antenna c/w: TV booster, outside cable hookup & satellite pre-wire**
- *Mechanical jacks, powder coated (2000 lb.)*
- ✓ **Stereo pre-wire c/w: two speakers and antenna**

- ✓ **New for 2000 Model Year**



Detail of the Roof / Cabinet Mounting

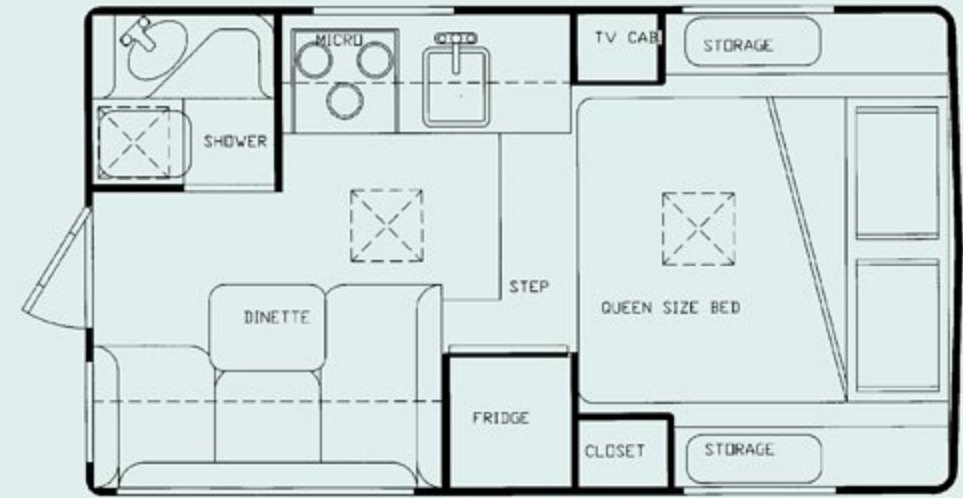


15 C8.2 FR Camper - Galley and Bed Area

1500 Series Campers



15 C8.2 FR Camper - Rear Dinette



15C8.2



15C9.5FR



15C9.5FS



Available
Wheel
Well
Access
Door

Base Specifications	Units		15C8.2		15C9.5	
	ft./in.	mtr				
Overall Length	ft./in.	mtr	15'-1"	4.59	16'-6"	5.03
Overall Height*	ft./in.	mtr	7'-3"	2.21	7'-3"	2.21
Overall Width	ft./in.	mtr	7'-11"	2.41	7'-11"	2.41
Floor Length	ft./in.	mtr	8'-2"	2.90	9'-6"	2.90
Interior Headroom (min)	ft./in.	mtr	6'-4"	1.93	6'-4"	1.93
Dry Weight**	lbs	kg	1670	758	1810	821
Fresh Water	US gal.	ltr	25	97	38	147
Grey Water	US gal.	ltr	11	43	11	43
Black Water	US gal.	ltr	12	47	12	47
Propane Gas Cap.	lbs	kg	20	9	20	9
Water Heater	US gal.	ltr	6	23	6	23
Furnace c/w: Elec. Ign.	BTU		12,000		12,000	
Refrigerator - 2Way	cu.ft.	ltr	4	113	4	113

* Top of Fridge Vent

** Base Features Only

POPULAR OPTIONS

- Air Conditioner 7100BTU
- Battery Disconnect, 12V
- Convert-a-Bunk
- Day/Night Shades
- Electric Jack Prewire

- Electric/Remote Jacks
- Exterior Shower
- Fantastic Fan
- Microwave Oven
- Rear Door Awning

- Skylight c/w: Pleated Shade
- Solar Energy System (RV22)
- Stereo AM/FM - CD
- Twin Beds
- Winter Package

**ASK YOUR DEALER FOR A COMPLETE LIST OF OPTIONS



Bigfoot

2500 Series Travel Trailers

CONSTRUCTION

Exterior

- Light weight two piece full fiberglass exterior
- 1 1/2" high density EPS (polystyrene) insulation in floor, walls, and ceiling (R=8)
- Exclusive Winterwall® System
- Safety glass radius windows with screens
- Folding assist handle at entry
- Exterior storage compartments
- Aluminum rear bumper with sewer hose storage
- Wide track tandem axle, c/w: electric brakes
- 14" Radial tires with white spoke wheels
- Air lift rockguard
- ✓ **Radius corner baggage doors**
- Entrance door c/w: screen and deadbolt lock
- ✓ **Awning rail**

Interior

- Washable vinyl wall paneling
- Marine quality fabric headliner
- Face framed, double screwed oak styled cabinets
- Oak trimmed laminate counter and table top
- Double bed with spring filled mattress
- ✓ **Larger TV cabinet**

KITCHEN AND APPLIANCES

- 3 Burner high output range top
- Two way - 4 cu.ft. refrigerator (LP/120V)
- 16,000 BTU forced air furnace c/w: electronic ignition
- Venetian blind for kitchen window
- ✓ **Monitor panel and power rangehood**
- White acrylic double sink c/w: sink lid/cutting board
- ✓ **Single lever faucet**
- Dual propane tanks (20 lb. ea.) c/w: overfill protection device valve

ELECTRICAL

- ✓ **Electrical 120V / 30 Amp service**
- ✓ **25 Amp DC power converter c/w: heavy duty battery charger**
- ✓ **Pre-wire for roof A/C and microwave**
- Battery ready
- Porch, hitch and roadside lights

PLUMBING

- City water hook up
- 12V Demand water pump system
- One piece molded fiberglass shower stall and dome, with hand held shower head
- Water heater by-pass system
- RV antifreeze pickup system
- Marine toilet
- Hot water heater with (6gal/23 ltr) tank

SAFETY

- Smoke detector
- ✓ **Propane detector**
- Fire extinguisher

STANDARD OPTION PACKAGE:

- ✓ **Auto change over propane regulator**
- Dual propane tanks (30 lb. ea.) c/w: overfill protection device valve
- Electronic ignition hot water heater
- Exterior shower c/w: winterizing valves
- ✓ **Hidden TV antenna c/w: TV booster, outside cable hookup & satellite pre-wire**
- Oven c/w: 3 Burner high output rangetop
- Spare tire and carrier
- ✓ **Stereo pre-wire c/w: two speakers and antenna**

- ✓ **New for 2000 Model Year**



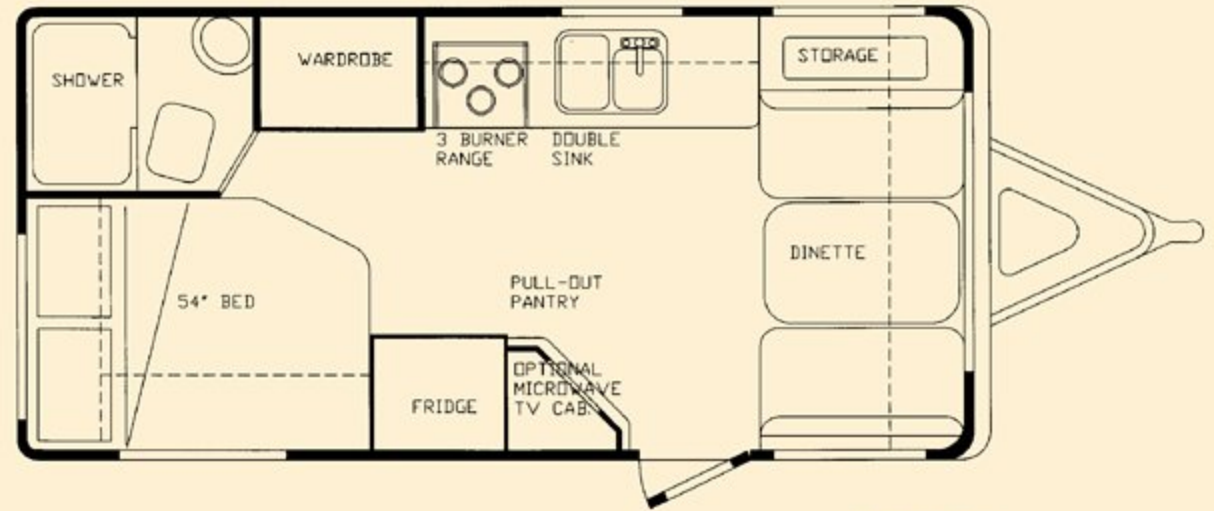
25 B21 RB Travel Trailer

Bigfoot

2500 Series Travel Trailers



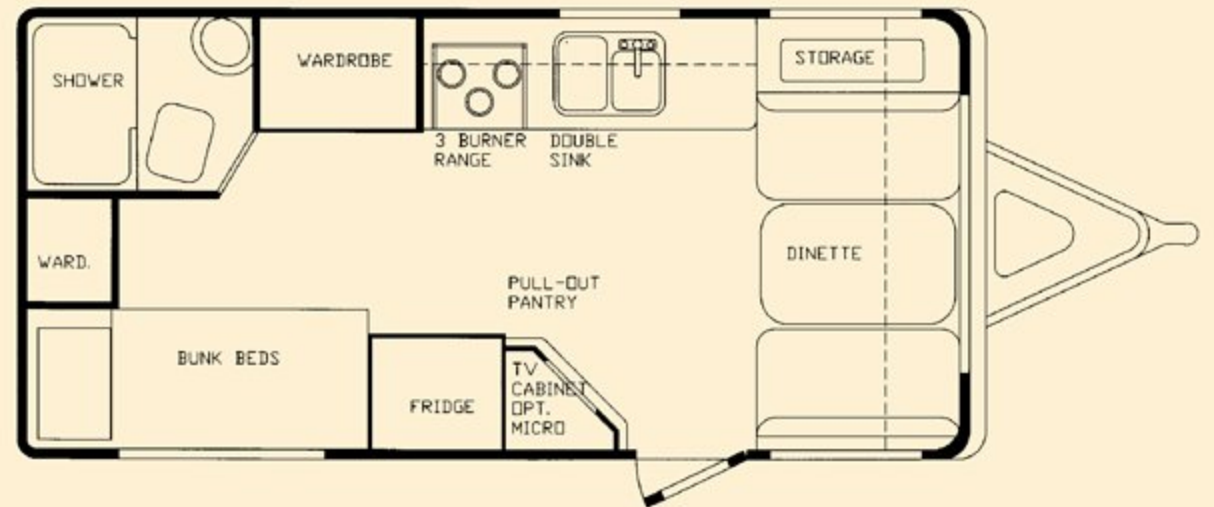
25 B21 Travel Trailer Interior



25B21



25 B21 Dinette



25B21 Bunk Bed Option



25 B21 Pantry



25 B21 Galley

Base Specifications	Units		25B21	
	ft./in.	mtr		
Overall Length	ft./in.	mtr	21'-6"	6.55
Overall Height*	ft./in.	mtr	8'-8"	2.64
Overall Width	ft./in.	mtr	8'-0"	2.44
Interior Headroom	ft./in.	mtr	6'-4"	1.93
Dry Weight**	lbs	kg	3590	1628
Hitch Weight**	lbs	kg	500	227
Axle Weight Rating	lbs	kg	7000	3175
GVWR	lbs	kg	7000	3175
Radial Tires	Size		ST205/75R14	
Fresh Water	US gal.	ltr	35	135
Grey Water	US gal.	ltr	19	74
Black Water	US gal.	ltr	19	74
Propane Gas Cap.	lbs	kg	2*20	2*9
Water Heater	US gal.	ltr	6	23
Furnace c/w: Elec. Ign.	BTU		16,000	
Refrigerator - 2Way	cu.ft.	ltr	6	169

* Top of Fridge Vent

** Base Features Only

POPULAR OPTIONS

- Air Conditioner 7100 BTU
- Alloy Wheels
- Battery Disconnect (12V)
- Bi-Fold Range Cover
- Day/Night Shades

- Fantastic Fan
- Microwave Oven
- Rack & Ladder
- Self Storing Awning

- Skylight c/w: Pleated Shade
- Sofa, (In lieu of Dinette)
- Solar Energy System (RV22)
- Stereo AM/FM - CD
- Winter Package

**ASK YOUR DEALER FOR A COMPLETE LIST OF OPTIONS

Bigfoot

2000 Series Travel Trailer

CONSTRUCTION

Exterior

- One piece fiberglass Fibercore bonded side walls, ceiling and floor with 1" polyurethane insulation (R=8)
- One piece rubber roof
- Safety glass radius windows with screens
- Folding assist handle at entry
- Lighted exterior storage compartments
- Body styled steel reinforced fiberglass rear bumper
- Wide track tandem axle, c/w: electric brakes
- 15" Radial tires with white spoke wheels
- Heavy duty tongue jack
- Recessed rockguard
- ✓ **Radius corner baggage doors**
- Radius corner entrance door c/w: screen
- ✓ **Awning rail**

Interior

- Washable vinyl wall paneling
- Marine quality fabric headliner
- Face framed, double screwed oak styled cabinets
- Oak trimmed laminate counter and table top
- 14" x 14" Roof vent in living area
- ✓ **Smoked lenses on all roof vents**
- Venetian blinds
- ✓ **Power fan in bathroom**

KITCHEN AND APPLIANCES

- 3 Burner high output range top
- Two way - 4 cu.ft. refrigerator (LP/120V)
- 25,000 BTU forced air furnace c/w: electronic ignition
- ✓ **Monitor panel and power rangehood**
- White acrylic double sink c/w: sink lid/cutting board
- ✓ **Single lever faucet**
- Dual propane tanks (20 lb. ea.) c/w: overfill protection device valve

ELECTRICAL

- ✓ **Electrical 120V / 30 Amp service**
- ✓ **25 Amp DC power converter c/w: heavy duty battery charger**
- ✓ **Pre-wire for roof A/C and microwave**
- Battery ready
- Porch, hitch and roadside lights

PLUMBING

- City water hook up
- 12Volt Demand water pump system
- One piece molded fiberglass shower stall and dome, with hand held shower head
- Water heater by-pass system
- RV antifreeze pickup system
- Marine toilet
- Hot water heater with (6gal/23 ltr) tank

SAFETY

- 21.5" x 29.5" Egress window
- Smoke detector
- ✓ **Propane detector**
- ✓ **Carbon monoxide detector**
- Fire extinguisher

STANDARD OPTION PACKAGE:

- ✓ **Auto change over propane regulator**
- ✓ **Bifold range cover**
- Day/Night shades
- Deep oven c/w: 3 Burner high output range top
- Dual propane tanks (30lb ea.) overfill protection device valve
- Electronic ignition hot water heater
- Exterior shower c/w: winterizing valves
- Fridge upgrade - Two Way - 6 cu.ft.
- ✓ **Hidden TV antenna c/w: TV booster, outside cable hookup & satellite pre-wire**
- ✓ **Shock absorber kit (N/A 20-B22)**
- Frame mounted spare tire and carrier
- Spring filled mattress (exchange) (N/A 20-B22)
- ✓ **Stereo pre-wire c/w: four speakers and antenna**

20 B27 Travel Trailer

✓ **New for 2000 Model Year**



Bigfoot

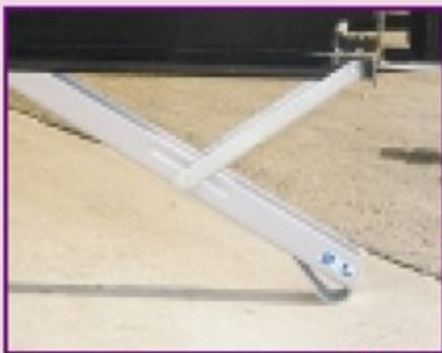
2000 Series



20 B27 Spacious Galley Area

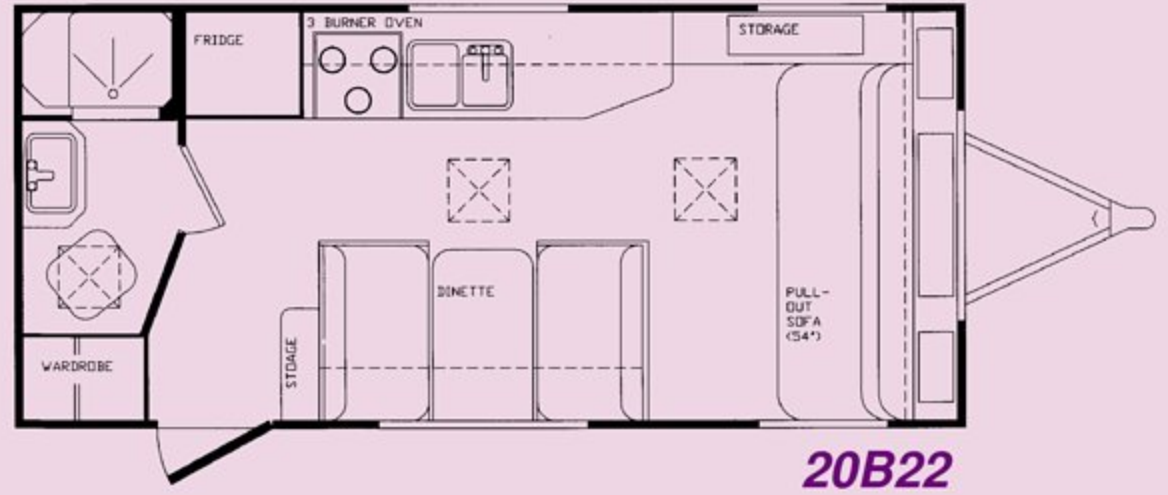


20B27 Pass Through Storage Area

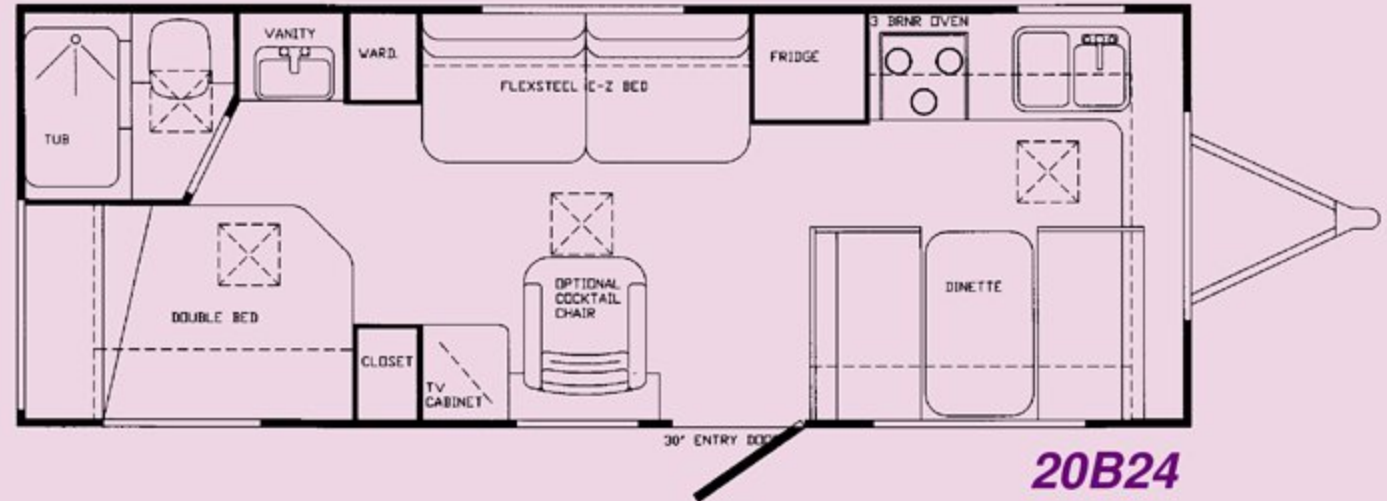


Stabilizer Jacks

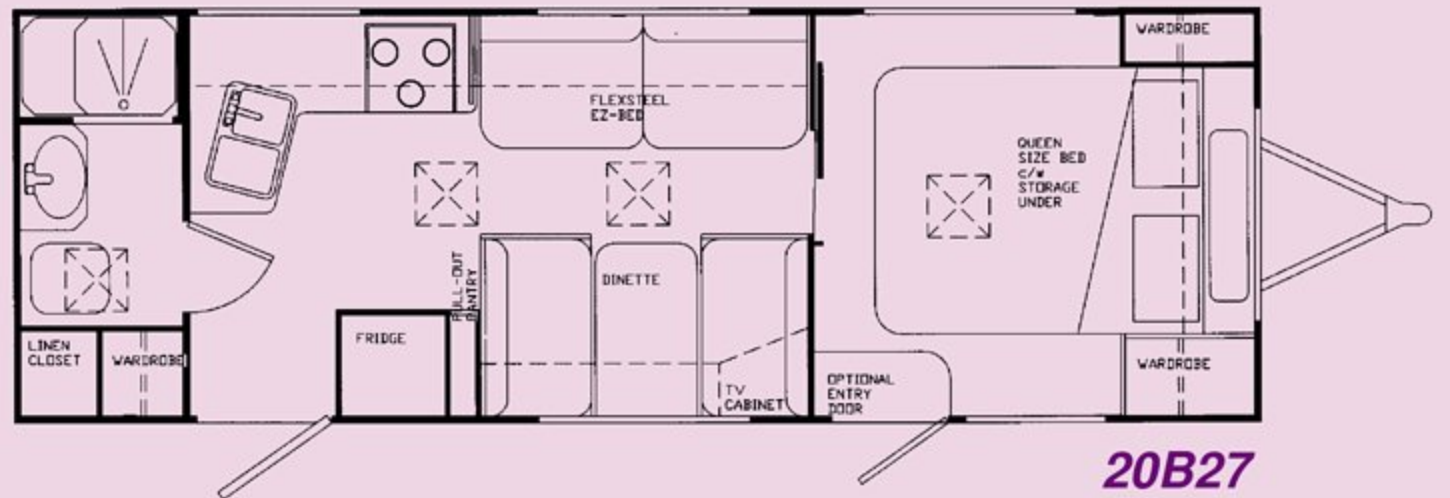
Folding Assist Handle



20B22



20B24



20B27

Base Specifications	Units		20B22		20B24		20B27	
	ft./in.	mtr						
Overall Length	ft./in.	mtr	22'-4"	6.80	26'-10"	8.18	27'-6"	8.38
Overall Height*	ft./in.	mtr	9'-1"	2.77	9'-3"	2.82	9'-5"	2.87
Overall Width	ft./in.	mtr	8'-1"	2.46	8'-1"	2.46	8'-1"	2.46
Interior Headroom	ft./in.	mtr	6'-6"	2.00	6'-6"	2.00	6'-6"	2.00
Dry Weight**	lbs	kg	3610	1637	4450	2019	4740	2150
Hitch Weight**	lbs	kg	346	157	529	240	463	210
Axle Weight Rating	lbs	kg	7000	3175	7000	3175	7000	3175
GVWR	lbs	kg	7000	3175	7000	3175	7000	3175
Radial Tires	size		ST205/75R14		ST225/75R15C			
Fresh Water	US gal.	ltr	46	178	44	171	54	209
Grey Water	US gal.	ltr	44	171	44	171	44	171
Black Water	US gal.	ltr	40	155	40	155	40	155
Propane Gas Cap.	lbs	kg	2*20	2*9	2*20	2*9	2*20	2*9
Water Heater	US gal.	ltr	6	23	6	23	6	23
Furnace c/w: Elec. Ign.	BTU		16,000		25,000			
Refrigerator - 2Way	cu.ft.	ltr	4	113	4	113	4	113

* Top of Fridge Vent

** Base Features Only

POPULAR OPTIONS

- Air Conditioner 7100 BTU
- Alloy Wheels
- Battery Disconnect (12V)
- Coffee Maker
- Fantastic Fan

**ASK YOUR DEALER FOR A COMPLETE LIST OF OPTIONS

- Fluorescent Light Package
- Microwave Oven
- Self Storing Awning
- Skylight c/w: Pleated Shade
- Solar Energy System (RV22)
- Stabilizing Jacks
- Stereo AM/FM – CD
- Winter Package

Bigfoot

1500 Series Travel Trailers

CONSTRUCTION

Exterior

- Light weight two piece full fiberglass exterior
- 1" high density EPS (polystyrene) insulation in floor, walls, and ceiling (R=6)
- Safety glass radius windows with screens
- Folding assist handle at entry
- Aluminum rear bumper with sewer hose storage
- Wide track axle, c/w: electric brakes
- 14" Radial tires with white spoke wheels
- Air lift rockguard
- ✓ **Radius corner baggage doors**
- Entrance door c/w: screen and deadbolt lock
- ✓ **Awning rail**

Interior

- Washable vinyl wall paneling
- Marine quality fabric headliner
- Face framed, double screwed oak styled cabinets
- Oak trimmed laminate counter and table top
- ✓ **Smoked lenses on all roof vents**
- Venetian blinds

KITCHEN AND APPLIANCES

- 3 Burner high output range top
- Two way - 4 cu.ft. refrigerator (LP/120V)
- 16,000 BTU forced air furnace c/w: electronic ignition
- ✓ **Monitor panel and power rangehood**
- White acrylic sink c/w: sink lid/cutting board
- ✓ **Single lever faucet**
- Dual propane tanks (20 lb. ea.) c/w: overfill protection device valve

ELECTRICAL

- ✓ **Electrical 120V / 30 Amp service**
- ✓ **25 Amp DC power converter c/w: heavy duty battery charger**
- ✓ **Pre-wire for roof A/C and microwave**
- Battery ready
- Porch, hitch and roadside lights

PLUMBING

- City water hook up
- 12V Demand water pump system
- Molded fiberglass bathroom with vanity and hand held shower head
- Water heater by-pass system
- RV antifreeze pickup system
- Marine toilet
- Hot water heater with (6gal/23 ltr) tank

SAFETY

- Smoke detector
- ✓ **Propane detector**
- Fire extinguisher

STANDARD OPTION PACKAGE:

- ✓ **Auto change over propane regulator**
- Fiberglass propane bottle cover
- ✓ **Hidden TV antenna c/w: TV booster, outside cable hookup & satellite pre-wire**
- Outside access doors
- Oven c/w: 3 Burner high output rangetop
- Spare tire and carrier
- ✓ **Stereo pre-wire c/w: two speakers and antenna**

✓ **New for 2000 Model Year**

15 B17 Travel Trailer

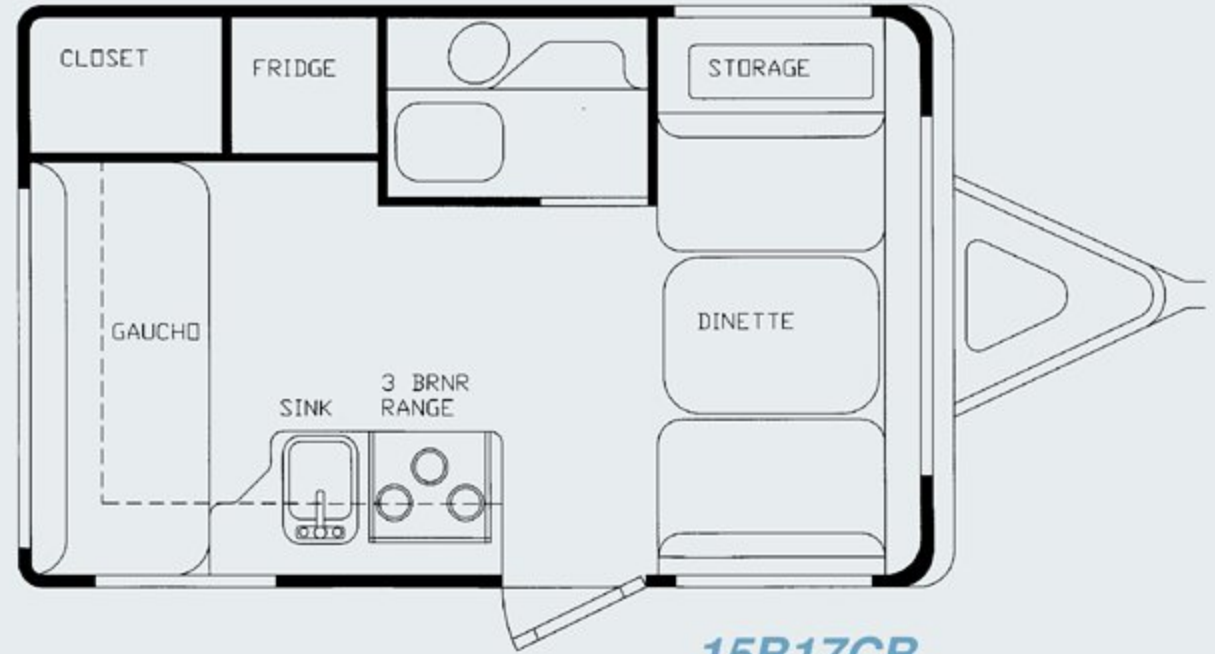


Bigfoot

1500 Series



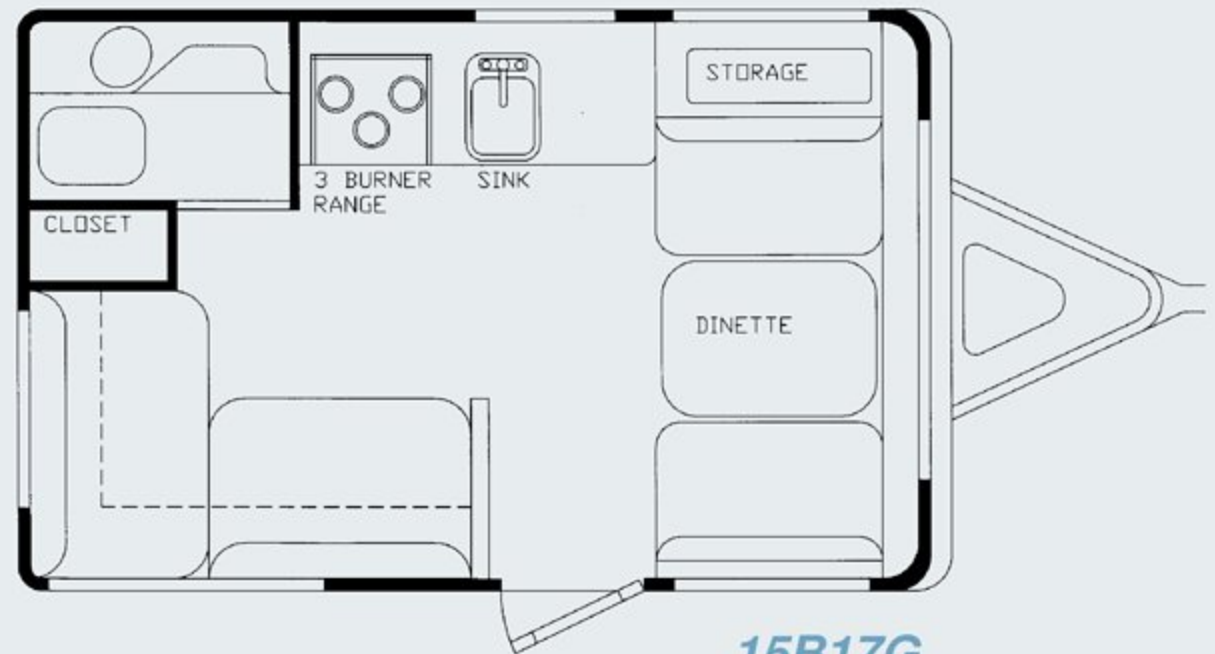
15 B17 G Travel Trailer Interior



15B17CB



15 B17 CB Travel Trailer Galley and Rear Sofa



15B17G

Base Specifications	Units		15B17CB		15B17G	
	ft./in.	mtr				
Overall Length	ft./in.	mtr	16'-7"	5.05	16'-7"	5.05
Overall Height*	ft./in.	mtr	8'-3"	2.51	8'-3"	2.51
Overall Width	ft./in.	mtr	8'-0"	2.44	8'-0"	2.44
Interior Headroom	ft./in.	mtr	6'-4"	1.93	6'-4"	1.93
Dry Weight**	lbs	kg	2490	1129	2490	1129
Hitch Weight**	lbs	kg	330	150	330	150
Axle WeightRating	lbs	kg	3190	1447	3190	1447
GVWR	lbs	kg	3190	1447	3190	1447
Radial Tires	Size		ST205/75R14			
Fresh Water	US gal.	ltr	35	135	35	135
Grey Water	US gal.	ltr	19	74	30	116
Black Water	US gal.	ltr	7	27	7	27
Propane Gas Cap.	lbs	kg	2*20	2*9	2*20	2*9
Water Heater	US gal.	ltr	6	23	6	23
Furnace c/w: Elec. Ign.	BTU		16,000		12,000	
Refrigerator - 2Way	cu.ft.	ltr	6	169	3	85

* Top of Fridge Vent

** Base Features Only

POPULAR OPTIONS

- Air Conditioner 7100 BTU
- Alloy Wheels
- Battery Disconnect (12V)
- Day/Night Shades
- Electronic Ignition Water Heater

- Exterior Shower
- Fantastic Fan
- Microwave Oven
- Rack & Ladder
- Self Storing Awning

- Skylight c/w: Pleated Shade
- Sofa, (In lieu of Dinette)
- Solar Energy System (RV22)
- Stereo AM/FM – CD
- Winter Package

**ASK YOUR DEALER FOR A COMPLETE LIST OF OPTIONS

Bigfoot



30 MH 24

Bigfoot Warranty

Bigfoot Industries Inc. provides a one-year limited warranty on all Bigfoot Products. In addition, Bigfoot Industries Inc. offers a three-year limited structural integrity warranty on all 1500, 2000, and 2500 Series Products. Bigfoot Industries Inc. offers a five-year limited structural integrity warranty on all 3000 Series Products.

Appliance warranties vary and are set by the respective manufacturer.

Please contact your Dealer for complete details regarding Warranty Policies.

The information contained herein is as accurate as possible at the time of publication. Subsequent refinements and improvements may be evident in the actual product. All liquid capacities are approximate and dimensions are nominal.

This brochure may not be used for contractual purposes. Bigfoot Industries Inc. reserves the right to improve or modify its products without prior written notice. Contact your Dealer for complete details.

Your Local Bigfoot Dealer is:

Bigfoot Industries Inc., 4114 Crozier Road, V0E 1B0,
Armstrong, B.C., Canada • 1-250-546-2177

www.bigfootrv.com

